



ANNUAL POT LUCK PICNIC & PLANT AUCTION  
SAN DIEGUITO PARK, SOLANA BEACH

# ESPINAS Y FLORES

*MAMMILLARIA THORNERI*

NEWSLETTER of the SAN DIEGO CACTUS & SUCCULENT SOCIETY, INC.  
A Non-Profit Public Benefit California Corporation  
VOLUME XXXIII NUMBER NINE SATURDAY, SEPTEMBER 12, 1998 @ 11:00AM



Royce D. Wood 1974

# SEPTEMBER PICNIC & PLANT AUCTION

★ \$ \$ \$ WE NEED YOUR CONTRIBUTIONS TO THIS YEAR'S PLANT AUCTION - PLEASE CHECK YOUR GARDEN OR GREENHOUSE, AND CONSIDER PARTING WITH SOME SPECIAL PLANT \$ \$ \$ ★

Any SDC&SS member may donate auction quality plants — with 70% of the proceeds going to the donor. Last year some extraordinary "show quality" specimens grown by Beverly Kirkegaard received the highest bids. They were wonderful plants — I believe I saw one of them on our trophy table at the June show! This year, perhaps you have something extra special that you would be willing to part with. Any person wishing to donate plants should contact the auction chairperson: **Tom DeMerritt @ (619) 270-5544**. Please note these plants need to be auction quality. Also, the club will be accepting any quality plants for sole donation purposes.

---

Our cover: This wonderful sketch of *Euphorbia misera* by Royce Wood was published by **Singer's Growing Things** to illustrate their 1975 catalog. Later a limited edition portfolio of eight (*This was #4*) of these excellent illustrations was produced by Charles Glass & Robert Foster, who were the editors of the *Cactus & Succulent Journal (U.S.)* at the time.

---

Please send your letters, artwork, poetry, Cactus or Succulent-of-the-Month articles, puzzles, comments, or criticisms, etc. to:

**MICHAEL & JOYCE BUCKNER, EDITORS**  
**2327 "N" AVENUE**  
**NATIONAL CITY, CA 91950**  
**NEW PHONE /FAX NUMBER:**  
**(619) 477-4779**

Publication deadline for the October issue is Saturday, September 12, 1998

*Espinas y Flores*, the newsletter of the San Diego Cactus and Succulent Society, Incorporated, P. O. Box 33181, San Diego, CA 92163-3181, is published monthly with the exception of a combined May-June issue (*11 issues per year*). Newsletter circulation is approximately 400 with about 350 issues going to members (*one issue per household*) and an additional 40-50 issues going to educational institutions, botanical societies, cactus & succulent nurseries, local publications, related natural history events & exhibits, and other interested groups or individuals upon request. Subscriptions (*membership dues for an individual*) are \$10 per year for bulk mail within the USA.

Opinions stated in the articles and editorials of *Espinas y Flores* are solely the opinions of the authors or editors and do not necessarily represent the opinions of other SDC&SS members, the Board of Directors, or the organization in general. All materials submitted to *Espinas y Flores* for possible publication may be edited for form and content. All material in the *Espinas y Flores* may be reprinted by non-profit organizations (**unless such permission is expressly denied in a note accompanying the material**) provided that proper credit is given to the SDC&SS *Espinas y Flores* and the author, and one copy of the publication containing the reprinted material be sent to the editors. Reproduction in whole or part by any other organization or publication without the permission of the editors is prohibited.

# The San Diego Cactus & Succulent Society Picnic & Plant Auction

**WHEN:** Saturday, September 12, 1998 - 11:00 am til late afternoon.

**WHERE:** San Dieguito Park - Lower Section off El Camino Real, Solana Beach.

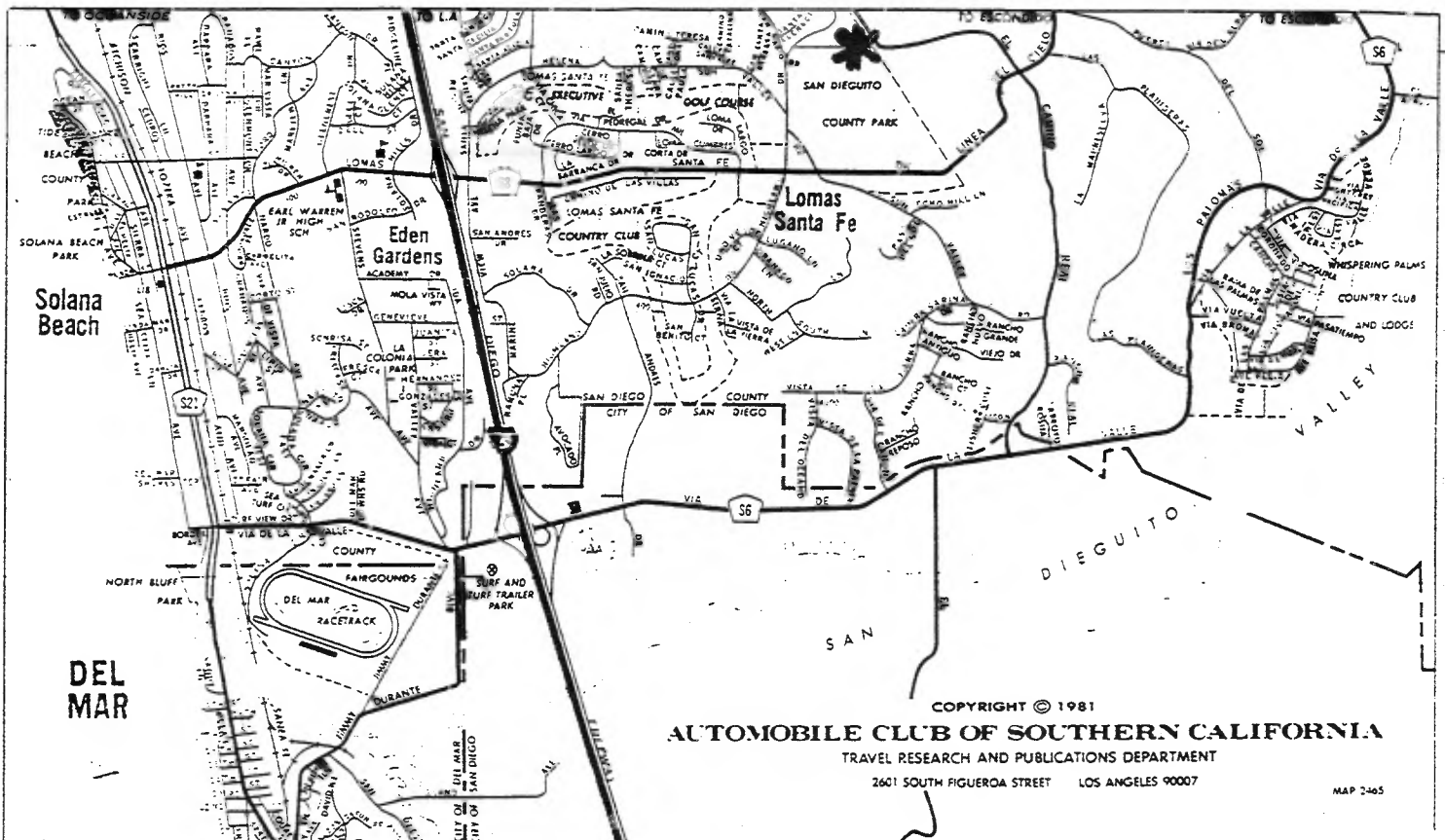
**WHAT TO BRING:** *POTLUCK DISH - hot - cold - juicy - sweet - sour - crunchy - creamy - salty - chewy - sticky - spicy - delicious - something good & yummy!*

The dish you bring should feed 6 or more people. Club will be providing beverages, plates, napkins, utensils, and a shade tent.

Besides bringing good food to share, you might consider taking along: sunscreen, lawn chairs, blanket, goofy looking hat, shades, whoopee cushion, bubbles, soccer ball, bongo drums, hula-hoop, first-aid kit, water balloons, yo-yo, horseshoes, Frisbee, a partridge in a pear tree, or your own picnic paraphernalia of choice. You are also welcome to bring guests — or even a well-behaved pet!

SAN DIEGUITO PARK is a lovely location. It has ample parking, flat space for people, food, and plants (no hills to climb), shade trees, and restroom facilities. Tom & Laura DeMerritt will set up their shade tent, and there will be several signs posted to help you find your way!!!

**Here's the map folks!!**



## **DIRECTIONS TO SAN DIEGUITO PARK "LOWER SECTION":**

- ◆ Take the Via De La Valle (Solana Beach) exit off of Interstate 5;
- ◆ Go East (toward Rancho Santa Fe) on Via De La Valle for 1.5 miles to El Camino Real;
- ◆ Turn Left (North) on El Camino Real and go an additional 1.8 miles;
- ◆ The area of the park where we have our picnic is located on the West Side of the street (left hand side) at the 15900 block of El Camino Real.

We note with sadness the passing of **Charles Hansen**, long time member, plantologist, mineralogist, gem stone expert and miner. Always interesting and excited about life and natural history, he will go on exploring and experimenting, at least in our minds . . . Farewell, old friend.

Our heartfelt sympathy goes to long-time (and long-distance) member, **Kitty Sabo**, for the loss of her husband, **Joe Sabo**. Sadly, once again we are reminded of the passing of an age - an era of exploration - of discovery. Joe Sabo's first love was Kitty and no "fear of flying." They were married 55 years. An expert bush pilot, he and Kitty along with Charlie Glass and Bob Foster found quick access to remote areas in Baja and mainland Mexico. Because of Joe's skills of flying they were able to discover and explore many biotic communities which were inaccessible via automobile. Commemorated for prosperity — *Mammillaria saboae*, from Chihuahua is an appropriate reminder of his love. Our thoughts to Kitty, and her sister, Betsy — we wish you the very best.

The 13th Annual Inter-City Cactus & Succulent Show & Sale was, once again, a tremendous success. There were many SDC&SS members who won trophies: **Jim & Roberta Hanna, Woody & Kathy Minnich, Steve & Rowena Southwell, Dick & Lupe Hulett, Leo & Lillian Pickoff, Lem & Pat Higgs, and Cathy & Mike McCammon**. Additionally, in the "Alternate Awards" category: **Jim Hanna** - MEDEA BRONZE BUST AWARD for his *Pachycormus discolor* "Reclining Nude"; **Guy Wrinkle** - HERCULES HERNIA AWARD for his gut-buster *Bursera* species; **Steve & Rowena Southwell** - MT. OLYMPUS TOWERING INFERNO for the tallest looking plant, *Fouquieria fasciculata*; **Woody Minnich** - TROJAN HORSE ROAD APPLE AWARD for his *Gymnocalycium ragonessii* "Donkey Droppings"; **Joyce Buckner** - the GODS MUST BE CRAZY AWARD for her playful & color display "Creative Habitat"; **Dick & Lupe Hulett** - PARADOXICAL - MOST PUZZLING PLANT AWARD for their *Cyphostemma juttae*; **Michael Buckner** - HAPPY HABITAT AWARD for his *Ficus socotrana* — a beautiful "keeper" award that already adorns our wall, I might add.

In addition to the above mentioned, the following SDC&SS members were also noticed participating in the Inter-City Show — they were either helping or playing — buying or selling — showing or telling: **Carol & Joe Wujcik** (organized the Walks & Talks, and the Alternative Awards), **Chuck Everson & Jerry Williams**- Rainbow Gardens Bookshop, **Ellen Low & Camille Rutkowski** (They spent entire weekend sorting sale plant labels - Thank you!!), **Kitty Sabo** ( and Betsy, too!), **Lillian Pickoff, Dick & Nancy Bogart, Marylyn Henderson & Bob Tracey, Monte Woodworth, Brigitte Williams, Michael Cullen** (came all the way from Sacramento), **John Williams, Pam & Lee Badger, Jeff Harris, Mark Palandri, Hans Britsch, John & Mary Cooper, Stephen Johnson, Ted & Marilyn Alford, Jim & Shirley Berry, Ric & Marilyn Newcomer** — these are just the members that we noticed - I'm sure there were more!!

Additionally, there were some SDC&SS members missing and missed by many of us: Rudy & Teresita Lime, Ed Nolan, Ron Burnight, Emily Ormond, and Alan & Fe Weiss. Where were you guys? We certainly did miss you!! Anyway, a good time was had by all. The Saturday night banquet was a smashing success - at a better location, too! There were some wonderful auction plants and some very competitive bidding. For me, the highlight of this year's show was the kids — starting with Sarah Minnich & her friend, Amanda, who helped me put together my display on Friday afternoon. Thank you, girls. You really made the display terrific! On Saturday, when I came into to check on everything I got into a 45 minute conversation with a 12 year old girl from Van Nuys who has already acquired a sizable plant collection over the past 3 years by attending this show — next year she will be showing her plants — we got a commitment out of her! On Sunday, Monte and I did our Walk & Talk - in the air-conditioned indoors, thank goodness! We had an audience of at least 30 succulent enthusiasts - several of them were still in school. I found a particular fan in Paul Skillin from Bakersfield. Paul was taking notes and writing down plant names. We went through the sales area together searching for inexpensive plants that would make good miniatures. (He may be young, but he already has expensive tastes - there was a disappointed sigh when he read the price of an *Avonia quinaria* ssp. *quinaria*! He was particularly attracted to the exotic stuff: *Tylecodons, Othonnas, my Euphorbia hedyotoides*.) Monte remembers talking to this same young man last year. We are looking forward to seeing Paul's own miniature display — it is sure to happen! Only a matter of time!

**September 27: San Diego Hoya Group Barbecue (Chicken & Tri-Tip Roast) Lunch Meeting @ Rainbow Gardens** - 1444 E. Taylor Street, Vista, CA 92084 - starts @ 11:30 am - Jean Beck will be the main speaker. Please bring a potluck side dish or drinks, or plant donation for the raffle. Non-members will be charged \$3 to defray lunch expenses. Rainbow's Nursery & Bookshop will be open all afternoon. More Info: (760) 758-4290.

**September 27: Long Beach Cactus Club - Cactus & Succulent Auction-** 11:00 am @ Domingues Adobe, 18127 S. Alameda Street, Compton. BYO sack lunch; club will supply drinks. Call Hank Warzybok (562) 429-7110.

**October 17 & 18 - San Gabriel Valley Winter Show & Sale** at the Los Angeles Arboretum in Arcadia.

**October 23 - 25: Sonoran 2 - A Cactus & Succulent Conference - Seminar - Symposium in Tucson** - For more information regarding this terrific event contact: **Carol Clapp**, P.O.Box 91560, Tucson, AZ 85752-1560; phone (520) 908-9001 or e-mail://www.desertcactus.com/tcss/ or kitfox@azstarnet.com.

**October 31 & November 1: Cactus Data Plants Fall Sale** - 9am - 5pm @ 9607 Avenue S-12, Littlerock, CA 93543. Mini auction of 15 Show Plants on Saturday - all previous show winners; call (805) 944-2784 for information.

# THE SEAT OF THE PROBLEM

## BY RONALD BURNIGHT

Either my collection of cacti is getting bigger, or I haven't really hidden my assets, only put them behind me. At any rate, the aisles in my greenhouse seem to be getting narrower. The other day I dropped my tweezers and when I bent over to pick them up, I got harpooned in my biggest part — which is what the word "butt" means — by an *Opuntia schottii*. Now, *Opuntia schottii* may not have the most spines, or the biggest spines, but the ones it does have are exceedingly determined! As soon as I was stabbed, I instinctively grabbed for the wounded part which immediately stapled my hand to my butt. With my right hand thus stapled behind me and my left hand almost dragging the ground, I limped toward the house looking like a bad imitation of Quasimodo or Richard the Third. My Lover was in the kitchen opening a can of supper. She gave me one of those "what is it now?" looks and asked, "Are you trying to look up my dress?"

"Help me!" I begged, "My hand is stapled to my butt."

She sized the situation up immediately, and grabbing my wrist, gave my hand a terrific jerk which broke the spines off in my butt and left the opuntia joint dangling from my hand. Still trying to suppress a scream, I dangled my wounded hand with the hostile opuntia joint in front of her face in what I hoped was a piteous gesture. I swear a smile flickered across her face. "No problem," she said as she grabbed the salad tongs, and with one well-coordinated swoop, she ripped the pad free and slam dunked it into the garbage disposal. "Don't bleed on the floor," she said, handing me a dish towel.

"What about the spines in my butt?" I asked.

Her face set in a glazed, hard look. "What about 'em?"

"Well," I pleaded, "I can't go around with my pants stapled to my butt."

Her eyes narrowed. "Are you telling me you want to drop your pants and moon me while I pluck the spines out?"

"I wouldn't be mooning you," I protested. "It would be more like an act of love."

"No way! I am **not** into butt plucking."

"Come on," I implored, "you are my lover. We have no secrets from each other."

"Well, I've got news for you. You may not have any secrets from me, but I've got one from you."

I waited for the hammer to fall: it did.

## **THE SEAT OF THE PROBLEM** by Ronald Burnight Continued:

"You've got G - U - B!" my Lover said.

"Gub? What's a gub?"

"It means 'genetically ugly butt.' You've heard of butt ugly? That's you, Baby."

I was shocked. "I do not! My butt's just as pretty as yours!"

She laughed sarcastically. "I'm a girl, and girls have pretty butts. Men don't. . . . except for Troy Aikman and Tom Cruise. Next to your butt, Godzilla looks cute."

I blew up. "That does it! Every time we have a discussion, you screw it up with your sexist attitudes!"

"Well, I never get any support from you," she countered.

"I support you plenty."

"You laughed at me when we liberated the men's room at Macy's."

"That's because you peed on your shoe — which you wouldn't have done if you hadn't tried to use the urinal."

"What about all the fuss you raised when I burnt my bra?"

"You burnt it in the barbecue! For weeks the hamburgers had a funny taste."

"Well, it ain't gonna happen," she said as she headed for the door. Pausing long enough for a final salvo, "You've got a butt only a mother could love."

Of course! Dear old Mom. Moms are always there to clean up your messes. I grabbed the phone, "Hello Mom?"

The dulcet tones of Mom answered, "Yes?"

"Mom, I've got sort of a problem."

"Honey, you know I'll do anything I can to help you."

"Well, I got these cactus spines in my butt, and I need someone to pull them out."

There was a long pause on the phone, . . . I could hear a soap opera in the background. At last she came back on the line. "Honey, you know I love you. After all, I am your mother, but — well — you know how sensitive I am, . . . and — well — your butt is ugly. I'm afraid I might throw up."

I couldn't believe it. My own mother! . . . So I went to a doctor. He charged me \$120. He covered my butt with cloths, so that only one little square showed at a time.

As I lay draped over the examination table, I wondered if I could get a mask for my butt. Something sort of like the Phantom of the Opera — only lower. I'll try the Internet. You can get anything on the Internet.

# San Diego Cactus & Succulent Society Presents: **LOTUSLAND - 1999**

Our reservations are in. Well, actually we made the reservations in February. March 20, 1999 was the first Saturday available for 40+ visitors. Now, you need to get **your** reservations in — this field trip is sure to be a sell out, so do not procrastinate! Fill out the form below, write your check, and get it in the mail — As Soon As Possible!! Reservations will be given in the order in which the checks are received. So, please send in this form early to insure your space. Also, this is an SDC&SS sponsored field trip, and therefore SDC&SS members will be given priority status with regards to availability — if you have been remiss in paying your dues you may wish to renew your membership at this time. If we receive more checks from members than we have available seats, your uncashed check will be returned.

There is no other place on earth like LotusLand. If you have never been there, do not miss this opportunity. *Ganna Walska Lotusland* is a living museum of gardens. There is an outrageous Aloe garden, a Japanese garden, a Cacti garden, an Epithyllum garden, an Australian garden, a Euphorbia garden, a Succulent garden, a Bromeliad garden, a rich, breathtaking Cycad garden, and even a "Blue Garden." These are just some of many botanical wonders to be seen.

When we arrive at LotusLand our group of 45+ people will be broken down into smaller groups of 6 to 10 people. Each group will be assigned a docent; several of the docents are also members of the Santa Barbara Cactus & Succulent Society. So they should be fairly knowledgeable with regards to the extensive collection of succulent specimens. The docents conduct walking tours which last between 1½ and 2 hours — wear comfortable walking shoes! LotusLand does not allow for unescorted garden tours — please stay with your docent guide.

Here are a few other LotusLand "No's" you need to be aware of before committing to this memorable trip: ♦ No children under 10 including infants ♦ No smoking ♦ No picnics (*We will stop for lunch prior to arriving.*) ♦ No tripods - photographs for personal use only ♦ No picking flowers, foliage, seed pods, or taking cuttings. Our reservations also state, "Fees are non-refundable - two weeks prior notice must be given to reschedule. Tours will take place in light rain, so please come prepared."

A nice cushy air-conditioned bus (Sundance Bus Lines) with restroom and video player /music will pick up San Diego members in the parking lot behind the Organ Pavilion in Balboa Park, **and will leave promptly @ 7:00 am**; an additional stop will be made at the Cal-Trans Park & Ride - La Costa Exit off of Interstate 5 for our North County members — bus will depart from this location **promptly @ 7:30 am**. We will bring along plenty of drinking water, some soft drinks, snacks, and hopefully enough hot coffee for everyone in the morning. Members are welcome to bring along their own food. There will be two food stops (*locations with several restaurants & fast food places in close proximity*): the first will be somewhere near Santa Barbara at lunch time, and around El Toro Road on the way home. In addition to our tour of LotusLand, we are hoping to arrange for a morning visit to a local succulent nursery — something similar to the stop made at Abbey Gardens last time - more details as we get them! For more information regarding this trip you may contact group leaders: **Michael & Joyce Buckner, at (619) 477-4779.**

NAME: \_\_\_\_\_

ADDITIONAL GUESTS: \_\_\_\_\_

ADDRESS: \_\_\_\_\_

PHONE (days or evenings?): \_\_\_\_\_

NUMBER OF SEATS \_\_\_\_\_ X \$40.00 = \_\_\_\_\_  
(Amount of Check Enclosed)

**SEND THIS FORM TO:**

**SDC&SS - Treasurer, P.O.Box 33181, San Diego, CA 92163-3181**

# SAN DIEGO CACTUS & SUCCULENT SOCIETY MEMBERSHIP APPLICATION

The San Diego Cactus & Succulent Society is a nonprofit, hobby organization created to stimulate interest in succulent plants. This society brings together people with a common interest for the purpose of educating the public about the beauty and uniqueness of these remarkable plants, encouraging proper collecting and maintenance of the plants through preservation of native habitats and horticultural propagation, and to foster good fellowship. You are invited to join our society, whether you are an expert, amateur, or a beginner with an interest in unusual plants and flowers.

You will receive our publication *Espinas y Flores*, one of the best cacti and succulent newsletters. We produce 11 issues a year. You will get great articles and keep up with club news for the next year.

Our meetings are on the second Saturday of the month (except June and September) and newsletters are received the week of the meeting. We offer knowledgeable speakers who present educational & entertaining programs; many are world renowned scholars, botanists, explorers and authors. The San Diego Cactus & Succulent Society's Annual Show and Plant Sale occurs the first weekend of June in Room 101, Casa del Prado, Balboa Park, San Diego. A wide range of succulent plants, ceramic pots, and growing supplies are available during most meetings. There is also a plant exchange table and a library. For more information regarding membership, please call Joey Betzler, Membership Chair, at (619) 569-8510.

Yes, I/We wish JOIN or  REJOIN the San Diego Cactus & Succulent Society.

NAME(S): \_\_\_\_\_

ADDRESS: \_\_\_\_\_

CITY, STATE, COUNTRY & ZIP+4: \_\_\_\_\_

PHONE/FAX/E-MAIL: \_\_\_\_\_

Do you know that for an additional \$5.00 paid on your membership dues - you can have *Espinas y Flores* delivered by first class mail, instead of bulk mail? Check here  and add \$5.00 to your dues payment, if you are far away you will receive our newsletter faster.

Dues are \$10.00 per person, \$5.00 for each additional person in the same household for (bulk rate USA), add \$5.00 for First Class Delivery (optional). International dues, including Mexico and Canada, are \$25.00 (US funds), additional members as above.

◆ Amount enclosed ..... \$\_\_\_\_\_

Thank you for joining the SDCSS

SEND THIS FORM TO:

SDCSS - Treasurer/Membership, P. O. Box 33181, San Diego, CA 92163-3181



# ICCSS Show 1998 — CREATING HABITAT

## *Thank You San Diego Cactus & Succulent Society*

The plants are the vehicle that bring us all together.

I have known many persons in our cactus and succulent hobby that have been faced with the dilemma of moving to a great new place to live, but soon become frustrated by the lack of friends or fellow enthusiasts to share their hobby with. In most cases this scenario results in depression, or a loss of interest in the plants, or a complete change of hobby. This is sad, if not tragic, but just shows us how important we all are to each other by refueling our passions, making us grow and sharing our knowledge!

This year's Inter-City show was just the thirteenth time that an incredibly diverse group of various club members got together to share 1,700+ wonderful plants. Our San Diego club can be especially proud of our participation and involvement in this year's event. In my personal opinion, our representation and participation was only second to our friendship, battles, laughter, tears and moments shared at this unparalleled event. Many thanks go to: Michael & Joyce Buckner for their fantastic display, wonderful show plants, and walks and talks, John Williams for his warm enthusiastic presence, Monte Woodworth for his beautiful miniature presentation and walks and talks, Chuck and Jerry of Rainbow Gardens for their great compliment to the show with books and sale plants, Marylyn Henderson and Bob Tracy for showing their perfect Echeverias, and to Lee Phelps, Tom Knapik, and Jerry Williams for their judging expertise. We all missed Rudy Lime!

There is so much to reflect on when one thinks of the short history of this — the best Cactus & Succulent show in the world. I hope you all had the pleasure of knowing Fred Hutflesz. We miss him; he was one of the original three show chairmen. Do you have the T-shirts from all thirteen years? What a great idea — Walk & Talks — *in situ* educational talks and demonstrations. And look where we have gone with them — several of this year's Walks & Talks received an audience 40 people, or more! And the sale — \$40,000.00+ in sales at a cactus show! Wow! That was once a high! 2,400+ show plant entries in a cactus show — will that ever be matched? The special people we honored over the years — were you lucky enough to know some of them? Gilbert Tegelberg, Doren Black, Manny Singer, Ed Storm, Ed Gay, Harry Johnson, Frank Horwood, August Brietung, Bill Low, Ted Taylor, Lillian True, Fred Hutflesz, Dave Grigsby, C.W. Elliott, Dennis Juhnky. What was a "Golden Sweep?" Alternative Awards? Who would have ever thought that we would get this pleasantly weird? The Eighth, Eighth, Eighthth, Eigghth, 8th annual show. The first sponsosaured show, dating back 65 million years (Jurassic cacti). The year PBS filmed, and put the first cactus show on national television. And this year!!

Nothing really matters more than what we have ALL done together to make this such a great gathering of people and plants from all walks of life. As a show chairman and fellow club member, I cannot thank each and every one of you enough for your super efforts to make this just one more in a string of magnificent shows. This show is one of the great creations in the cactus hobby, and the San Diego Cactus & Succulent Society members are a big part of it's success. Thank you!

Wendell S. "Woody" Minnich

# USING CACTI & SUCCULENT PLANTS AS MINIATURES

## BY JOYCE BUCKNER

While participating in a cactus & succulent show in 1988, I injured my back. It was painful to get up, painful to sit, painful to walk, painful to lie down, and even painful to laugh or sneeze. I visited doctors who prescribed Vicodin and such. I went to a chiropractor, who would still have me coming into his office on a weekly basis if it were up to him. I lived intimately with an icepack for several months, and vowed to never again to attempt lifting any plant that was bulkier than a ten pound bag of Kitty Litter or heavier than a two bags of Kitty Litter. Michael, knowing first hand what kind of terror I am when in pain, stopped asking me for help with his beautiful-but-huge show specimens. Many of these show plants he has made even heavier by incorporating rocks in their staging; he shows a couple of plants that weigh over 100 pounds each.

At the Inter-City show I noticed that there was a miniature category (*size of pot must be under 3 inches*) — both in cacti and succulents. This category contained a wide range of very interesting plants, and I became intrigued with the possibilities. Shortly after that we attended a bonsai show and sale, where beautiful miniature bonsai pots were offered at premium Japanese prices. We invested in a few, and so began a collection of miniature succulent plants which now exceeds over fifty different species.

Selection of appropriate plant material is the first process in creating miniatures. There are two basic categories of succulent plant species which can be grown as miniatures:

- 1) **GENETICS:** succulent plant species which remain small even in nature, or have been horticulturally selected or hybridized to create a dwarf or smaller growing variety.
- 2) \* **CONTAINMENT & CULTURE:** plants which adapt well and grow "smaller" when their roots are restricted — as a miniature. Plants that I have listed on the following page which fit into this category are marked with an \*.

The containment process requires a certain degree of patience and commitment. You may have to grow a plant — perhaps "grow" is not the word I'm looking for — you may need to keep a plant alive and healthy for many years in a highly contained environment before its foliage becomes small enough for it to qualify as a miniature. Now, in greenhouses I often find myself searching for the very smallest specimen of a mature or maturing plant, instead of the normal "bigger is better" buying strategy.

The primary key to successful cultivation of succulent plants consists of watering at correct intervals and/or during proper seasons. When watering, plants should be drenched thoroughly. With these very small plants it is best to spray / mist — sometimes twice a day during hot summer months. Placing miniatures in a wash basin or bowl full of water is a good way to water thoroughly so as to not disturb what little soil there is. At every third or fourth misting /watering, the accumulated salts should be leached in this manner.

Keep plants much drier when they are dormant and during cold weather. Dormant miniatures should be placed in a shady dry protected area. Many cacti, especially those growing outdoors, require very little or no water through the winter months or whenever the possibility of frost exists.

Potting miniature plants can be a very delicate procedure. I use chopsticks to pack the soil in and around the plant. I also keep on hand a finely-pointed pair of manicure scissors, wooden toothpicks, and tweezers for use when potting and grooming. Additionally, a small glob of "Earthquake" wax or putty (*now available in California wherever fine china is sold!*) used to secure your plant in place can save you immeasurable heartache. Just the slightest bump or jar, the jump of a cat or the wag of a dog, the bouncing of a ball, or even a slightly heavy wind can send tiny precious plants & pots flying.

Soil mixes for miniature succulents should drain quickly, retain moisture, and act to hold the plant securely in place. Since plants and containers are so small, I recommend screening your potting soil and Perlite so that only the smaller components are utilized. Those little plastic scoop-spoons that come in cans of ground coffee work great for putting soil and topping into small pots. You should also screen the soil topping or utilize a sand mix for topping. Topping is not "just for show" with miniatures; it helps keep the soil and the plant in place protecting the roots from sun and the stem and/or caudex from too much moisture. Many cacti thrive in a sandy quartz with little or no soil utilized.

Miniature plants should be moderately potbound. Roots typically seek heat and aeration as well as moisture. The potbound condition is preferable, because with an over-potted (*pot too large for plant*) plant the soil can remain cold and wet for extended periods. Also be careful not to set containers in a saucer or on another surface that fails to drain sufficiently. A quarter of an inch of sitting water in a saucer will not effect larger plants, but it can drown a miniature. This is how rot happens.

Fertilizing miniature container plants is best done minimally. You may add a weak solution of plant food at every second or third watering. Succulents approaching and during their dormant period should not be fertilized. (*The cessation of a plant's growing season is often indicated with flowering and seed or fruit production.*) Carefully read fertilizer labels — different fertilizer's ratios may be used to promote either foliage or flower production. **Dilute, dilute, dilute** — More is not better! Even a little too much fertilizer can "burn" a plant, causing much damage and often death.

As with other plants, cacti and succulents are prone to occasional attacks by various harmful insects and diseases, and because of their tiny nature are vulnerable, especially to snails and slugs. Keep your miniatures in a protected area that you inspect regularly. Many pests can be removed manually, and I have found that a few drops of a castile soap, such as Dr. Bronner's Peppermint Soap in the spray discourages aphids and the like. Please use pesticides responsibly.

The following is a list of the some the succulent species which can be grown as miniatures. Most of the plants listed here have recently been shown in a miniature setting — SDC&SS June Show or Inter-City Show. They were represented either in the miniature categories, or appeared in my display, or in the wonderful collection of "micro-miniatures" featured in Monte Woodworth's display.

<i>Adenium obesum*</i>	<i>Euphorbia capst medusae*</i>	<i>Monanthes muralis</i>
<i>Aeonium sedifolium</i>	<i>Euphorbia hedyotoides</i>	<i>Monanthes polyphylla</i>
<i>Agave filifera compacta</i>	<i>Euphorbia actinoclada</i>	<i>Monvillea spegazzinii</i>
<i>Aichryson bethencourtianum</i>	<i>Euphorbia milii</i>	<i>Nananthus transvaalensis</i>
<i>Aloe descoingsii</i>	("Crown of Thorns")	<i>Operculicarya decaryi*</i>
<i>Aloe sinkiana</i>	<i>Euphorbia decaryi*</i>	<i>Opuntia microdasyl</i>
<i>Anacampseros filamentosa</i>	<i>Euphorbia platyclada</i>	<i>ssp. rufida</i>
<i>Anacampseros rufescens</i>	<i>Faucaria tuberculosa</i>	<i>Pedalanthus tithymalioides</i>
<i>Anacampseros telephistrium</i>	<i>Fenestraria aurantiaca</i>	<i>Pediocactus knowltonii</i>
<i>Anacampseros quinaria</i>	<i>Ficus palmeri*</i>	<i>Peperomia columella</i>
<i>Ariocarpus kutschoubeyanus</i>	<i>Ficus petiolaris*</i>	<i>Portulacaria afra variegata*</i>
<i>Astroloba herrei</i>	<i>Ficus glumosa*</i>	<i>Portularcaria molokaiensis</i>
<i>Beaucarnea recurvata*</i>	<i>Fouquieria macdougallii*</i>	<i>Scilla violacea minima</i>
<i>Bergeoanthus</i>	<i>Fockea edulis*</i>	<i>Sedum furfuraceum</i>
<i>Cephalocereus senilis*</i>	<i>Frailea asteroides</i>	<i>Sedum multiceps</i>
("Old Man Cactus")	<i>Frailea magnifica</i>	x <i>Cremnosedum</i>
<i>Ceraria pygmaea</i>	<i>Gasteria brevifolia</i>	"Little Gem"*
<i>Ceropegia rendallii</i>	<i>Haworthia maughanii</i>	<i>Sempervivum arachnoideum*</i>
<i>Ceropegia woodii</i>	<i>Haworthia truncata</i>	<i>Sempervivum tectorum</i>
<i>Crassula corymbulosa</i>	<i>Hereroa dyeri</i>	<i>Senecio citriformis</i>
<i>Crassula lycopodioides</i>	<i>Kalanchoe rotundifolia</i>	<i>Senecio haworthii</i>
<i>Crassula nealeana</i>	<i>Kalanchoe rhombopilosa</i>	<i>Sinningia leucotricha</i>
<i>Crassula schmidtii</i>	<i>Kalanchoe thyrsiflora*</i>	(African Violet Family)
<i>Crassula susannae</i>	<i>Mammillaria yaquensis</i>	<i>Turbincarpus kranzianus</i>
<i>Dudleya greenii</i>	<i>Mammillaria fragilensis</i>	<i>Titanopsis calcarea</i>
<i>Echeveria lilacina</i>	<i>Mestoklema tuberosa</i>	<i>Tylecodon schaeferianus</i>

# Huntington Botanical Gardens Fifteenth Succulent Plants Symposium

Saturday, 12 September 1998  
Succulent Plant Uses

## Featured speakers:

- James Folsom, Huntington Botanical Gardens, *Plants and People: A General Introduction*
- Wendy Hodgson, Desert Botanical Garden, *Use of Stenocereus and Agave by Baja California Tribes for Food*
- Amadeo Rea, University of San Diego, *Comparing the Peyote Complex of the Northwest Mexican Rancheria Indians with the Peyote Use of the Native American Church*
- Gary Nabhan, Arizona-Sonora Desert Museum, *Succulent Plants, Native Diets, and Diabetes Control*
- Mark Dimmitt, Arizona-Sonora Desert Museum, *Succulents: What Else Are They Good For?*
- Exequiel Ezcurra, San Diego Natural History Museum, *Biogeography of Mexican Columnar Cacti (Tribe Pachycereeae)*

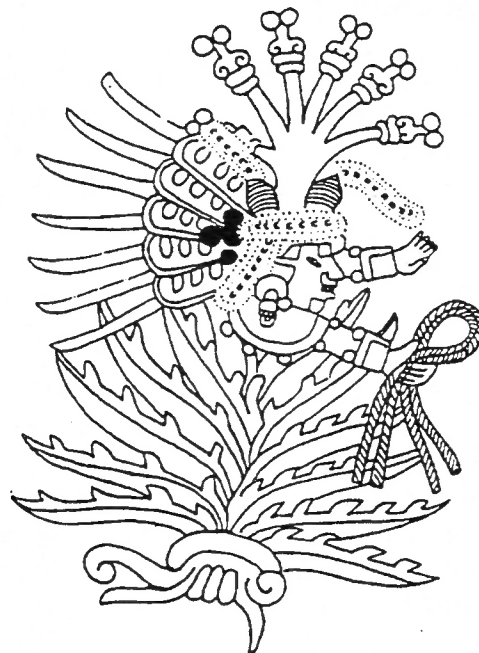
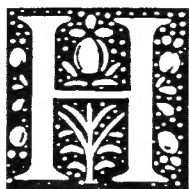
\*Speaker follows the dinner  
Plant sales and silent auction

To register mail your name(s), address, and a check payable to **The Huntington** to:

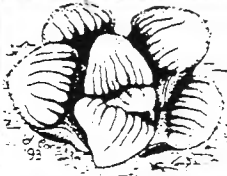
Succulent Symposium  
Huntington Botanical Gardens  
1151 Oxford Road  
San Marino, CA 91108  
(626) 405-2160  
(626) 405-2260 FAX

Symposium      \$65.00  
Barbecue        \$25.00

Registration and continental breakfast begin at 8:30 A.M.



# HAWORTHIAS & GASTERIAS



Specialists in rare, seldom offered haworthias & gasterias. Descriptive catalog \$1.00 deductible first order. Foreign customers send three (3) International Response Coupons.

Visit us on the web at <http://www.com/~amdigest/burks.htm>

## BURKS' NURSERY

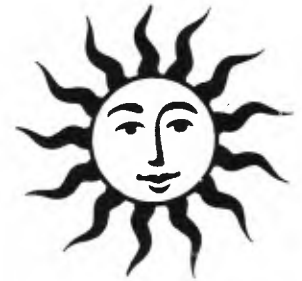
Phone/FAX: (501) 794-3266  
e.mail Loisburks@aol.com  
P.O. Box 1207  
Benton, AR 72018-1207 U.S.A.

# SUPPORT OUR ADVERTISERS TELL THEM YOU READ IT IN *ESPINAS Y FLORES*



## Solana Succulents

Rare & Exotics • Collector's Succulents • Landscape Specimens  
Hours: Wed - Sat 10am-5pm, Sun 12-5pm  
(619) 259-4568  
355 N. Hwy 101, Solana Beach, CA 92075



STEPHEN JOHNSON  
STONEWARE PLANTERS  
P. O. BOX 582  
FELTON, CA 95018  
(408) 336-5077



## CACTUS BOOKS

Send for FREE 29-page catalog featuring 460+ books/items on cacti, succulents, palms, cycads, bromeliads, hoyas, epiphyllums, South African, desert, more. Largest cactus bookshop in the world! Sent surface mail anywhere in the world!

RAINBOW GARDENS BOOKSHOP  
1444 E. Taylor St. Vista, CA 92084  
Phone 619-758-4290  
visa/mc welcome

# CANYON POTTERY Co., Inc. SALE

CLIP THIS COUPON  
for 10% OFF DISCOUNTED  
ORANGE SALE PRICE of  
40% off Retail Price!!  
Expires December 31, 1998

★ A New Shipment of Bonsai Pots Has Just Arrived ★

LOCATION: In Mission Valley - from Hwy 163 take Friars Road East - one block to first traffic light and turn left on Frazee Road Go two blocks and look for warehouse on the left.  
1544 Frazee Road, San Diego, CA 92108  
phone (619) 298-5400 - fax (619) 298-5157

HOURS: Monday - Friday 8am to 5pm,  
Saturday 9am to 5pm, Closed Sundays



C.O.D. Sales Only - \$100 Maximum Discount  
One Coupon Per Customer - Instock Only - No Other Discounts Apply



## Abbey Garden

Cacti and Succulents

Lem & Pat Higgs

"Specializing in Mail Order"

P. O. BOX 2249  
La Habra, CA 90632  
(562) 905-3520  
Fax (562) 905-3522



## WALTER ANDERSEN NURSERY

3642 Enterprise Street  
San Diego, CA 92110  
8:00 A.M. TO 5:00 P.M.  
OPEN 7 DAYS A WEEK  
(619) 224-8271

FREE GARDEN CLASSES  
9:00 A.M. SATURDAY MORNINGS

*Where everyone thinks alike,  
No one is thinking very much.*

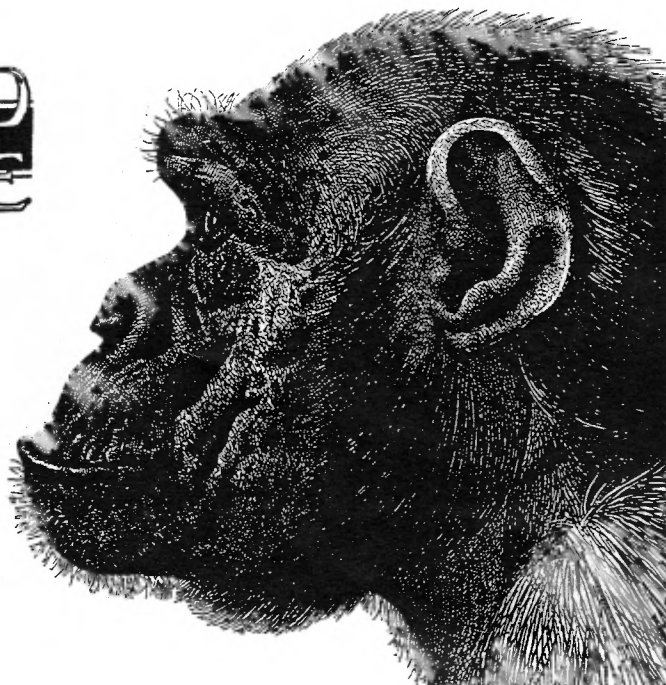
— ZEN PROVERB

## WISE AND OTHERWISE

*by Michael Buckner*

**If people persist in trespassing  
upon the grizzlies' territory,  
we must accept the fact  
that the grizzlies,  
from time to time,  
will harvest a few trespassers.**

— EDWARD ABBEY



### **Conservation and the Label Collector**

Dinter had a term for mesemb zealots: *Mesembschwärmer*. A "Schärmer" is a gushing enthusiast, a fanatic, someone utterly possessed, someone like me. While the enthusiasm is often touching or pleasant or astonishing, it can have, and often has had, destructive consequences. Many collectors "need" to see new material and they do not much trouble themselves about the methods of its acquisition. Several populations have been severely depleted by commercial raiders, and even those of us who collect only a few capsules tend to disturb rock formations, bruising and squashing more plants than we ever realize.

Even leaving aside ecological considerations, there is no reason why trade in collected conophytums should continue. With very few exceptions, the whole genus is available from seeds or cuttings, and the absent species are not in the trade anyway; freshly collected material mostly involves redundancies spiced with enticing "data" (*C. gratum*: 35 kilometers west [!] of Alexander Bay). And many people do collect data, like signed and numbered lithographs. The data can of course be valuable, but often it is cherished for its own runic sake.

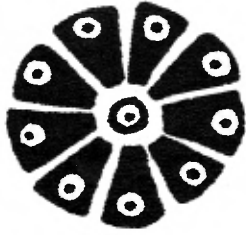
For many collectors, the most important thing is to have a name, any name, on the label; its accuracy is usually not questioned and if it is, the collector may remark that the "experts" are always changing their minds anyway. This attitude is commonly found among people who cultivate "art collections" and there is nothing wrong with it — except that these artists have the knack of preserving material which is often scientifically interesting and which would be most valuable were it possible to document it.

For "scientific" collectors, the name is less important than numbers and mileages; their labels bristle with data. Such collectors are apt to see a plant in the context of its neighbors, and they cherish little populations from each locality, equally valuing the plain and the fancy rather than selecting a single beauty as the representative of a species. All the same, I know of no scientist who is entirely immune to the charms of a fine art collection.

THE GENUS CONOPHYTUM - A CONOGRAPH by Steven Hammer, 1993, Succulent Plant Publications, Pretoria, South Africa.

To know someone here or there with whom you feel there is an understanding in spite of differences or thoughts expressed — that can make of this earth a garden.

— JOHANN WOLFGANG VON GOETHE



# WISE AND OTHERWISE

More than half a million four-wheel drive vehicles, as well as more than 200,000 dune buggies, are owned and operated in California. In Southern California alone there are more than one million motorcycles—each one capable of tearing up wide swaths of vegetation.

On most weekends 5,000 dune buggies can be found on the Algodones Dunes. In one recent year more than 151 competitive ORV events were held involving 67,000 participants and 189,000 spectators. The dust raised by these events is so thick that sometimes it can be photographed by orbiting satellites.

One race from Barstow to Las Vegas, called the Hounds and Hare Race, drew more than 3,000 contenders. The 150-mile race is held in two heats with a starting line that stretches one mile wide. Its effect on the desert can only be described as rampant destruction. The destruction was counted and assessed after one Hounds and Hare Race. The damage? 140,000 creosote bushes, 64,000 burro weeds (*Franseria dumosa*) and 15,000 yuccas demolished within a 100-mile stretch. These figures do not include scarce or even rarer plants that were destroyed. As early as 1968, desert areas with nearly 60 percent of their perennial cover destroyed were apparent. Because they are desert plants, the shrubs take decades to regenerate. All the small animals and reptiles that use these plants for shelter, as well as the ephemeral herbs associated with the shrubs, are lost. As the ORV events are held in the spring—prime reproductive time for both animals and plants—when the shrubs are achieving their skimpy growth, the ephemerals are producing their seed and the animals are building nests. The destruction could not happen at a worse time.

In 1973, the U.S. Bureau of Land Management came up with a plan for managing the deserts. About 18,000 square miles were allocated for unrestricted use by ORV's, with just 1,069 miles closed for their use. Because the ORV users complained, 24 percent of the closed area was re-opened to them. Well-organized, well-monied, and vocal ORV users claim that they are the only ones who use the deserts. Their contention is false but, unfortunately, good estimates of the other users are not available. These other include garden clubs that visit the wild flower displays, schools, photographers, rock hounds, campers, and others. These other users are not organized and are not connected to entrepreneurs such as the ones who make substantial profits from organizing ORV events.

**PLANT EXTINCTION - A GLOBAL CRISIS** by Dr. Harold Koopowitz and Hilary Kaye, 1984, Stone Wall Press, Washington D.C.

"Grandpa, grandpa, tell me a story," the little girl begged, tossing her blond curls in the air as she hurled herself expectantly toward the old man.

He bent down, gathered her into his arms and held her high in the air over his head. She squealed with childish pleasure.

"Sure, honey, what story do you want to hear?" he asked.

"Grandpa, tell me the one about the old times!" she said excitedly.

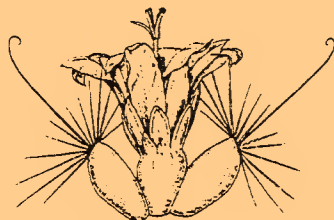
"What about the old times?"

"Oh, you know! The old times, when there were so many different kinds of flowers that you couldn't count them all. When there were forests with hundreds of butterflies and pretty orchids and lots of big, big trees . . ."

**PLANT EXTINCTION - A GLOBAL CRISIS** by Dr. Harold Koopowitz and Hilary Kaye, 1984, Stone Wall Press, Washington D.C.

The San Diego Cactus & Succulent Society, Inc.  
P.O. Box 33181, San Diego, CA 92163-3181  
**FORWARDING SERVICE REQUESTED**

NOPROFIT ORG.  
U.S. POSTAGE  
**PAID**  
SAN DIEGO, CA  
PERMIT No. 737



*Mammillaria thornberi*

## *Espinas y Flores*

Editors: Michael & Joyce Buckner - (619) 477-4779  
2327 "N" Avenue, National City, California 91950

### **SAN DIEGO CACTUS AND SUCCULENT SOCIETY, INC.**

#### **1998 EXECUTIVE BOARD**

##### **OFFICERS**

President: Tom DeMerritt  
(619) 270-5544  
Vice President: George Plaisted  
(619) 583-9551  
Secretary: Beverly Kirkegaard  
(619) 670-1035  
Treasurer: Herb Stern  
(619) 223-9134  
Immediate Past President:  
Tom Knapik  
(619) 462-1805

##### **DIRECTORS**

Elizabeth Athy  
(619) 469-7647  
Pamela Badger  
(619) 589-1223  
Tom Birt  
(619) 452-0389  
Michael Buckner  
(619) 477-4779  
Ed DeLollis  
(760) 945-7892  
Stan Yalof  
(760) 743-1560



The San Diego Cactus and Succulent Society, Inc. is open to all persons interested in growing cacti and other succulent plants. Meetings are held the second Saturday of each month (except June, Sept. and Dec.) at 1:00 PM in room 101, Casa del Prado, Balboa Park. Executive Board meetings are open to all members; call any officer or director for the time and location. Annual dues are \$10.00 per single member per year, \$5.00 for each additional member within the same household. Single copies of *Espinas y Flores* are \$1.00 per copy sent within the USA; foreign subscriptions are \$25.00. Affiliated with the Cactus and Succulent Society of America, Inc. Fax available - please call editor at (619) 222-3216 for number.