

Mammillaria thornberi

Espinas y Flores

The Newsletter of the San Diego Cactus & Succulent Society
Affiliated with the Cactus and Succulent Society of America

Volume 48 Number 5

May / June 2013



Cover photos by Duke Benadom



Happenings This Month

Coffee in the Garden

Wanda Mallen and Gary Vincent
Saturday, May 25, 2013
10:00-2:00

Regular Meeting

Saturday May 11, 2013
Balboa Park, Room 101, 1pm to 4pm

Agenda:

Pre Meeting Workshop at 11:00

Staging for Shows

By Peter Walkowiak

Plant of the Month

Chollas (*Cylindropuntias*),
by Erik Gronborg

Program

Uganda - North - An Adventure
into the Remote Karamoja
Region

By Duke Benadom



Boophone disticha

Opinions expressed in articles and editorial comments are solely the opinions of the author or the editor and do not necessarily represent the opinion of the SDCSS, the Board of Directors or the organization as a whole. All material submitted to the *Espinas Y Flores* for possible publication may be edited in form and content. All material contained in the *Espinas Y Flores* may be reprinted by other non-profit organizations (unless permission is expressly denied in a note accompanying the article.) Please send one copy of the printed material to the editor. Reproduction in whole or part by any other organization without the express consent of the editor is prohibited.

PRESIDENT'S MESSAGE



Another month has transpired and I again find myself back in Mexico.....what is with that?!

So many beautiful plants here and I can't wait to share the images with all of you! I want to thank **Jeremy Spath** for a fantastic program on Madagascar. I look forward to him sharing more adventures and pictures with us in the future.

Jerry Garner's potting selection seminar was well attended, Thanks Jerry for presenting that!

We have been busy preparing for the June Show. It is just around the corner...I am counting on everyone's participation to make this one great..... If you have helped before.... please continue... if not please do so!

Our next program will be about a plant expedition to Uganda by Duke Benadom. I am excited about hearing about this seldom visited and little known destination.

I know there is much to do both in your gardens and in life so take care until we gather again on May 11th.

All the best,
Kelly

Show Rules and Category Listings are in the electronic edition of the newsletter and posted on the website

Program for May

Uganda - North - An Adventure into the Remote Karamoja Region with a Look into Kenya & Southern Sudan

By Duke Benadom

This will be Duke's 81st presentation (since he started keeping track) and his 5th to the San Diego Club. Others included *Echinocereus*, *Namaqualand & Namibia, Africa (Part 2)*, and *Aloes of South Africa*,

Duke has been involved with several cactus & succulent clubs and is a life member of three. He became a Director for the Cactus & Succulent Society of America (CSSA) in 1990, served as the CSSA's Show Chairman for more than a decade, and as



Convention Chairman for six conventions. He served as Vice President and then President for a total of almost ten years, and as Editor of the Cactus & Succulent Journal for just over a year. He has been the author of the long-running CSJ column, *Superb Succulents*, since its inception; that column remains popular today. Duke's first book, on *Superb Succulents*, will be published shortly. He enjoys flora and fauna, traveling, photography, and sharing these experiences with others of similar interests.



Plant of the Month

CHOLLAS (*Cylindropuntias*),

by Erik Gronborg

A recent article in the San Diego Natural History Museum's publication by Jon Rebman clarifies the latest status of the former genus *Opuntia*. It has been divided into 5 genera for the North American plants, of which *Cylindropuntia* (the Chollas) is one. It has about 35 species, half of them



in Mexico. 11 species grow in California, nine of them in San Diego county.

Chollas are found in a wide range of climatic locations from the low elevation and extreme dry heat of Baja California and Anza Borrego State Park and the lower Sonoran desert around Yuma and Organpipe Cactus National Monument north to Joshua Tree National Park and all the way to the East Sierra mountains past Lone Pine.

We can see chollas in the costal chaparral up past Santa Barbara. Most species are specific to certain elevations,

ranging from sea level to the 4000 feet of Joshua Tree to 6500 feet north of Flagstaff in Arizona.

Like all *Opuntia* family members, chollas have areoles with glochids, which are bunches of tiny bristles which get embedded in the skin at the slightest contact, and which will irritate the skin for a long time. The main identifying characteristics of the chollas are the joints, which are round in cross section, as compared to opuntias with flat pads. The diameter of the joints ranges from 1/4 inch of *Cylindropuntia ramosissima* to over 2 inches of *C. bigelovii*. Another help in identifying chollas is the shape and size of the tubercles (the pattern of nodules on the joint), and the placement, number, and size of the spines on each areole. For example the Teddy Bear cholla has fat short joints with noticeably raised tubercles and numerous long golden spines; the Diamond cholla has long thin joints with flat tubercles and a single long spine on each areole. Chollas bloom for weeks in the spring after the winter rains. The flowers, one to two inches wide, range in color from pale green through yellow and orange to red and maroon.



Probably due to their unfriendly nature (jumping cholla is a well deserved nick name) chollas do not seem to be popular garden plants, though they are easy to grow, and can be rooted from a single joint and even from a flower base.

Literature consulted:

What has happened to *Opuntia*? by Jon P Rebman, San Diego Natural History Museum.

Cacti, Agaves, and Yuccas of California and Nevada, by Stephen Ingram
The Native Cacti of California, by Lyman Benson

The plants in the presentation were photographed by me in their natural habitats.

Future Coffee in the Garden Events

If you are interested in sharing your wonderful garden with other members let me know. The schedule is pretty open for the rest of the year. If you would like to see another member's garden make the suggestion and I can check to see if they were interested. If this is a program you would be interested in managing let me know. Chris Miller— c.miller@cox.net



Judy Hannula

Judy E. Hannula passed away of natural causes at her Pacific Beach home January 16, 2013. She was 84.

She was born May 6, 1928, in Sacramento, a fourth-generation Californian whose family was part of the Gold Rush. By the time Judy was one month old, her parents, Carl and Lucile Eskeline, moved to China, where her family would spend the next 15 years in various cities and towns. Her father worked for Standard Oil.

Judy, her older brother, Donald, and their parents eventually moved to Santa Barbara where Judy met her husband, Walter A. Hannula, while studying at UC Santa Barbara. Judy and Walter then moved to finish their degrees at UC Berkeley, where they were married — a marriage that lasted 47 years until Walter's death from a major stroke in 1996.

Judy and Walter had four children: Mia, Lisa, Tarmo and Tauno. She is survived by her children. The Hannula family went on to live in Sonora — in the Sierra foothills — Eugene, Oregon, Washington D.C., Guam and San Diego where they settled in Mission Beach, and then Pacific Beach, in 1969.

Judy worked as a ward clerk and a unit secretary at the Infant and Special Care Unit at UC San Diego Hospital, Hillcrest campus.

Judy's interests in birding, cactus and succulents took her around the United States and to several countries. She was one of the early members of the San Diego-based birding group, Tweet 'n Eat. Judy was a member of the San Diego Cactus and Succulent Society for decades and relished her expansive cactus, succulent and sage garden. She regularly attended the San Diego Early Music Society and was an avid listener and collector of classical music.

Despite a debilitating illness in the last years of her life Judy remained upbeat, gregarious and inquisitive. She especially liked hearing about the latest rare bird sightings in and around San Diego.

Judy's generosity to SDCSS was a continuous donation of funds and books to enhance our library, not to mention her sweet smile.

Guy Wrinkle



For over thirty years Guy has been interested in plants. He has explored native habitats and published many articles and books. He's been a speaker for and a long time member of SDCSS

Guy passed away on April 20, 2013, around 8:00 PM Sat. He had gone back to Cedars-Sinai for a second brain tumor removal on Mar. 19 and had complications. For the last 2 and a half weeks, he was in a coma. The new MRI showed that this new cancer was far more aggressive than the first one and had already spread to

both frontal lobes and the brain stem and even if he did wake up he would not have been able to survive very long or be able to do much. They took him off life support on Wed. Picture from CSSA 2004 trip to Madagascar

Coffee in the Garden for May Wanda Mallen & Gary Vincent's Home



If you didn't have a chance to see our garden last year, or even if you did, we are having another visit and hope you will come. Our garden is two acres in Fallbrook and contains an eclectic mix of plants, featuring many succulents and cactus. The garden is flat and easily accessible by wandering paths through conifers, Australian natives, tropical plants and more. There is also a greenhouse with specialty

African caudiciforms and *Euphorbias*. New this year is a cactus garden along the driveway, an extension of the tropical area, and also a driveway gate designed by a local artist featuring some of the plants in the garden.

Date: Saturday, May 25, 2013

Time: 10:00-2:00

**Address: 3856 Cedar Vale Way
Fallbrook 92028**



UPCOMING EVENTS

May 4 & 5: Sunset Cactus & Succulent Society Show & Sale, Veteran's Memorial Center, Garden Room, 4117 Overland Ave, Culver City CA. Info 310-822-1783

May 17 & 18: Gates Cactus & Succulent Society 32nd Show & Sale, Friday & Saturday 9 to 4:30 pm. Jurupa Mountains Cultural Center, 7621 Granite Hill Drive, Glen Avon, CA. Info 951-360-8802

May 25 & 26: Central Coast Cactus & Succulent Society Annual Show & Sale (10-4pm), Ludwick Center, 864 Santa Rosa, San Luis Obispo, ca. Info 805-237-2054, www.centralcoastcactus.org

June 1 & 2: SDCSS Annual Summer Show and Sale, Balboa Park, Room 101 San Diego CA Info Call 858-382-1797

June 8 & 9: Los Angeles Cactus and Succulent Society Plant Show and Sale, Saturday 9-5, Sunday 9-3:30, Sepulveda Garden Center, 16633 Magnolia Blvd, Encino CA Info: e-mail LACSS@gmail.com

June 15-20: CSSA 35th Biennial Convention, Austin TX, Info www.cssa2013.com

June 28-30: CSSA Annual Show and Sale—Huntington Botanical Gardens, 1151 Oxford Road, San Marino CA. Info 626-405-2160 or 2277. Sale 28th-30th, Show 29th-30th. Show & Sale free to the public

July 26-28: Orange County Cactus & Succulent Society Summer Show and Sale. Friday. July 26th 9am to 5pm, Saturday July 27th 9am to 5pm, Sunday 28th 12-4pm. 1000 S. State College Blvd., (Anaheim United Methodist Church) Anaheim, CA, Info 949-212-8417

April 2013 Brag Table Winners

Judged by Kelly Griffin

CACTUS

Novice

- 1st Place, Rich Ryan – GymnoAsterium
2nd Place, Joyce Schoof – No plant name

Intermediate

- 1st Place, Candy & Jerry Garner – Copiapoa marginata
2nd Place, Bev Grant – Oreocereus trollii
2nd Place, Candy & Jerry Garner – Echinocereus triglochidiatus
3rd Place, Jim DeForest & Chuck Ramey – Echinopsis monstrose
3rd Place, Bev Grant – Echinocereus veridiflorus
3rd Place, Candy & Jerry Garner – Mammillaria boelderiana

Advanced

- 1st Place, Brian Shepherd – Echinocereus triglochidiatus mojavensis
2nd Place, Brian Shepherd – Escobaria sneedii
3rd Place, Phyllis Flechsig – Rhipsalis burchellii

SUCCULENTS

Novice

- 1st Place, Kevin Hosmer – Cyrtanthus brachysyphus

Intermediate

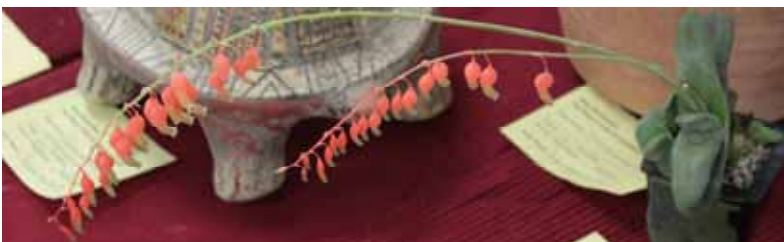
- 1st Place, Candy & Jerry Garner – Pachypodium gracilius
2nd Place, Bev Grant – Dyckia hybrid (Bob Baker)
3rd Place, Lee Badger – Gasteria glomerata

Advanced

- 1st Place, Phyllis Flechsig – Aloe porphyrostachys
1st Place, Tina Zucker – Cissus chirosa
2nd Place, Brian Shepherd – Hoodia rauschii



Submitted by Candy Garner



Photos by
Paul Maker

Membership Information —New ID Cards Available



In an attempt to promote lots of friendly, even educational banter amongst members at meetings, the Board authorized permanent, laminated ID cards for everyone! They are now available at the Membership Desk at all meetings and from the Membership Committee at all events. Your new ID card also displays your personal identification number in both readable and bar-coded form. The first two digits of that number represent the year you joined the SDCSS if the information was available in the membership data base, '60' or '61' otherwise. The last three digits were assigned sequentially by computer. Should you know the year you joined, and it differs from what's on your ID card, it can be updated and a new card issued. When you renew, your annual membership card will also show this ID number. Soon, the Library book check-out procedure will utilize a bar-code scanner system, and you will need your ID card (after renewal, your membership card will also work) to get books from the library. All library books will also have unique bar-codes within them, replacing the function of the cards now in use.

Play the Name Game!



Do you have succulents or cacti that you would like to know the name of? Or, are you good at identifying names of plants? If so, the Name Game plant table is just for you! Bring your plant to the meeting and members will try to identify it for you. Plants should be free of diseases and pests. There will be a sheet of paper for each plant. All members are encouraged to check the plants on the Name Game plant table and write the name of the plant if they know it along with their own name for reference purposes in case the owner wants to chat more about the name. If it is your plant you may find several different thoughts on the paper for your plant's name and may need to do more research but hopefully it will steer you in the right direction. If your plant is too large to bring to the meeting you can email Rick Bjorklund at Plantguyrb@cox.net a picture of your plant and it will be projected during the meeting for thoughts on its identity. Hopefully this will be an opportunity for members to help members and further our mission of learning, teaching, and appreciating succulent plants!

CSSA Convention

The Austin Cactus & Succulent Society would like to invite you to Austin, Texas for the 2013 CSSA Convention. It will be held June 15th through 20th at the Sheraton Austin Hotel at the Capitol. The Sheraton is located in the heart of downtown – within walking distance of many Austin attractions.

All members of the Society are invited to join in the gathering which will feature world renowned authors and experts in the field of Cacti & Succulents. The web site for the Convention is located at <http://cssa2013.com>.

Early Bird Registration has been extended to May 15th!



June Auction Sunday June 2nd at 2pm

Sunday of the Summer show we will have a Rare Plant Auction. The proceeds benefit Anza Borrego land purchases. This is to support the conservation portions of our mission as an organization. We are open to donations for the auction from members and vendors. One item that will be available for auction will be a copy of Edward F. Anderson's The Cactus Family. Contact Peter Walkowiak if you have a item for the auction.

SAN DIEGO CACTUS AND SUCCULENT SOCIETY'S ANNUAL SHOW & SALE, JUNE 1 & 2,**Show Rules**

Read the Entry Notes below the Plant Entry Classification Schedule. The show is open to anyone who grows succulent plants. There is no limit to the number of entries per class or the number of classes entered, though no entry can be entered in more than one class. All property shall be marked with the owner's name, not visible to the judges. The exhibitor must have grown the plant for at least six months.

All entries must have properly filled entry cards and must be entered in the appropriate Division and Class to be eligible for awards. Exhibitors are responsible for placing these items with their entries. For the best plant grown from seed, the exhibitors must have raised the plant themselves. Plants may be species or hybrids. Hybrids may be exhibited in the class of either parent. Grafted plants will be accepted in any class, though awards for grafts will be selected from Division IV.

Entries must be clean, healthy (pest-free) and dry. Remove Plant Name Tags in pots (except for collections and displays). Awards must remain with exhibits until the close of the show. Classes with few entries may be combined; classes with too many entries may have a Class C added. The show committee reserves the right to reject plants or exhibits and to readjust entries for the good of the show. Show hours must be followed. The San Diego Cactus and Succulent Society will exercise due caution in safeguarding exhibits. However, SDCSS cannot assume responsibility for loss of property. Entries are judged against perfection. The judges' decisions are final. In the case of disputes and/or ties, the Show Chair(s) or, if the Chair's plants are involved, the Head Clerk shall make the final decision.

TROPHIES AND PLAQUES are perpetual, except the educational and novice awards. First, second and third place ribbons will be awarded in each class; however, should the judges feel that a first, second, or third place is not merited, no awards will be given. To receive the CSSA Award, two or more educational displays must be entered. Judges, Club President, and Show Chairman will each award two Rosettes to their favorite plants.

CACTUS

Best Cactus Phillip Corliss Plaque
Best Novice Cactus SDCSS Plaque
Best *Epiphytic* Cactus Plant William & Ruth Nelson Trophy
Best *Mammillaria* Elibet Marshall Trophy
Best *Opuntiae* James & Shirley Berry Trophy

OTHER SUCCULENTS

Best Succulent Ruby Falk Plaque
Best Novice Succulent SDCSS Plaque
Best *Agave* Doris Rake Plaque
Best *Aloe* Barbara Jeppe Trophy
Best *Bursera* Jeff Harris Trophy
Best *Echeveria* Oliver & Sophie Loyland Trophy
Best *Euphorbia* Russell & Lydia Evans Cup
Best *Mesem* Samuel & Adela Markey Trophy
Best *Pelargonium* or *Sarcocaulon* Wilna Johnson Trophy
Best *Sansevieria* Richard G. Latimer, Sr. Trophy

CACTI OR SUCCULENTS

Best Baja Plant Richard G. Latimer, Jr. Memorial Trophy
Best Graft Bob & Suzanne Taylor Trophy
Best Mexican Plant in Show Dudley B. Gold Trophy
Best Plant Grown From Seed Tegelberg Family Plaque
Best San Diego County Succulent Julianne Rice Trophy
Best Miniature Monte & Mary Woodworth Plaque
Best *Pachycaul* or *Caudiciform*
H. Warren & Virginia Buckner Trophy
Best Succulent Bonsai Rudy & Teresita Lime Trophy
People's Choice Award Rose D'Attilio Memorial Plaque

DISPLAYS, EXHIBITS AND HIGH POINTS

Best Educational Display CSSA Award
Best Exhibit Reuben Vaughan Plaque
Most Artistic Display Walter & Hazel Scott Plaque
High Points 50 or fewer entries James & Shirley Berry Trophy
Sweepstakes Trophy Ronald & Marcia Monroe Trophy

Set-up times: Fri. May 31, 12 - 8 and Sat. June 1, 7 - 8:30 AM *for out of town participants only*

Show times: Sat. June 1 10 - 3 Sun. June 2, 10 - 4

Sales times: Sat. June 1, 10 - 5, Sun. June 2, 10 - 4

Special SDCSS Members-Only Sale: Sat. June 1, 9 - 10

AUCTION

Members may submit plants to an Auction to be held Sunday June 2 at 2pm.
75% of the proceeds will go to the Anza-Borrego Foundation, 25% to the donor.

Entries accepted till noon Sunday.

JUDGING SCALE - SPECIMENS, COLLECTIONS AND DISPLAYS

Condition 70%, Staging 15%, Size & Maturity 10%, Nomenclature 5%

EDUCATIONAL DISPLAY

Two or more entries must be exhibited for CSSA award. Educational Value 80%, Staging & Originality 20%

AWARDS POINT SYSTEM

Divisions I, II and IV, 1st-3 pts., 2nd-2 pts., 3rd-1 pt., Division III, 1st-7 pts., 2nd-5 pts., 3rd-3 pts. Division V, 1st-12 pts., 2nd-10 pts., 3rd-8 pts.,

Plaques and Trophies: 10 pts. Honorable Mention Awards receive no points, are used only as tie-breakers

SHOW COMMITTEE

Show Chair: Peter Walkowiak; **Head Clerk:** Susan Hopkins; **Luncheon:** Pam Badger;
Sales Chair: Chris Miller; **Sales Managers:** Tom DeMerritt, Terry Parr

THE SAN DIEGO CACTUS AND SUCCULENT SOCIETY

P. O. Box 33181, San Diego, California 92163-3181, is a public service and educational (nonprofit

PLEASE NOTE THAT NEW PLANT TAGS ARE BEING USED. PICK THEM UP AT THE MAY MEETING OR SHOW

ENTRY NOTES: PLEASE USE THE MOST CURRENT CLASSIFICATION SCHEDULE. Classes 1-125 are divided into two pot sizes: **A** and **B** (**A** = 5 inches and under; **B** = over 5 inches – measurements are of the **maximum** inside dimension). Note that **one** plant per container is allowed in these classes.

Three categories for competing entries are as follows: **GREEN** cards for exhibitors that have won 10 or less blue ribbons in a recognized cactus and succulent show. **YELLOW** cards are for participants that have won more than 10 blue ribbons. **BLUE** cards are for commercial exhibitors and those that want to compete against them. Awards will be selected from any category. **WHITE** cards are for plants entered non-competitively, for show only.

Plant Entry Classification Schedule

★ DIVISION I - CACTI	
# South American Cacti	
1	<i>Frailea, Blossfeldia, Cintia</i>
2	<i>Uebelmannia, Buiningia</i>
3	<i>Parodia</i>
4	<i>Notocactus</i>
5	<i>Gymnocalycium - solitary</i>
6	<i>Gymnocalycium - clumping</i>
7	<i>Rebutia</i>
8	<i>Sulcorebutia</i>
9	<i>Lobivia</i>
10	<i>Echinopsis</i>
11	<i>Weingartia, Soehrensia</i>
12	<i>Melocactus, Discocactus</i>
13	<i>Neoporteria, Neochilenia, Eriosyce</i>
14	<i>Copiapoa</i>
15	<i>Matucana, Oroya, Denmoza</i>
16	Tube Flowered Ceroids: <i>Arrojadoa, Cleistocactus, Oreocereus, Espostoa, etc</i>
17	Wide Flowered Ceroids: <i>Trichocereus, Pilocereus(most)</i>
18	Opuntoids: <i>Tephrocactus, Pterocactus, Quiabentia, Maihue- nia</i>
# North American Cacti	
19	<i>Echinocereus - pectinate spines</i>
20	<i>Echinocereus - straight spines</i>
21	<i>Turbinocephalus, Gymnocactus, Neolloydia</i>
22	<i>Pediocactus, Sclerocactus, Ancistrocactus</i>
23	<i>Thelocactus</i>
24	<i>Coryphantha, Escobaria, Acharagma</i>
	Genus Mammillaria
25	Subgenuses <i>Mammilloidya, Mammillopsis, Cochemiea</i>
26	Subgenuses <i>Oehmea, Dolichochele</i>
	Subgenus <i>Mammillaria</i>
27	Series <i>Longiflorae</i>
	Series <i>Ancistracanthae</i>
28	Groups <i>Tetrancistra, Guelzowiana, Grahamii, Dioica</i>
29	Groups <i>Barbata, Zephyranthoides</i>
30	Series <i>Proliferae, Decipientes, Heterochlorae</i>
31	Series <i>Sphacelatae, Leptocladodae, Polyedrae</i>
32	Series <i>Lasiacanthae</i>
33	Series <i>Polyacanthae</i>
34	Series <i>Supertextae</i>
35	Series <i>Leucocephalae</i>
	Series <i>Stylotela</i>
36	Group <i>Bombycina</i>
37	Groups <i>Crinita, Otero, Glassii</i>
	Series <i>Mammillaria</i>
38	Groups <i>Heyderi, Magnimamma, Brandegeei</i>
39	Groups <i>Mammillaris, Pettersonii, Standleyi, Compressa, Sonorensis, Petrophila</i>
40	<i>Ariocarpus</i>
41	<i>Obregonia, Strombocactus, Aztekium, Epithelantha, Pelecyphora</i>
42	<i>Astrophytum</i>
43	<i>Ferocactus</i>
44	<i>Hamatocactus, Leuchtenbergia</i>
45	<i>Echinocactus</i>
46	<i>Stenocactus, Echinofossulocactus</i>
47	Wide Flowered Ceroids: <i>Cephalocereus, Pachycereus, Peniocereus, Wilcoxia, etc</i>
48	Opuntoids: <i>Opuntia, Cyllindropuntia</i>
# Other Cacti	
49	Epiphytic Cacti - <i>Selenicereus, Aporocactus, Epiphyllum, Rhipsalis, etc</i>
50	<i>Pereskia</i>
51	Crested Cacti
52	Monstrose Cacti
53	Variegated Cacti

★ DIVISION II - SUCCULENTS	
# Euphorbias - African	
54	<i>Esula</i> group: <i>balsamifera, lambii, autropurpurea, etc</i>
55	<i>Treisia</i> group: <i>gariepina, hamata, halleri, lignosa, etc</i>
56	Geophytes, deciduous stems and leaves: <i>trichadenia, bogensis, etc</i>
57	Geophytes, deciduous leaves: <i>tuberosa, primifolia, selenifolia, crispa, etc</i>
58	<i>Pseudoeuphorbia</i> group: <i>bupleurifolia, clava, hallii, loricata, etc</i>
59	<i>Medusae</i> , Western cape: <i>clavarioides, flanaganii, pugniiformis, etc</i>
60	<i>Medusae</i> , Eastern cape: <i>inermis, esculenta, caput-medusae</i>
61	<i>Medusae</i> , persistent peduncle: <i>pentops, suppressa, decepta, arida, etc</i>
62	<i>Pseudomedusae</i> : <i>multiramosa, namaquensis, fasciculata, schoenlandii, etc</i>
63	<i>Dactylanthus</i> group: <i>globosa, polycephala, etc</i>
64	<i>Meleuphorbia</i> group: <i>suzannae, obesa, meloformis, tubiglans</i>
65	<i>Anthacantha</i> group: <i>ferox, horrida, enopla, stellaespinosa, etc</i>
66	<i>Grandifoliae</i> group: <i>nerifolia, unispina, poissonii, etc</i>
67	<i>Scolopendriae</i> group, capsules not extruded: <i>clavigera, groenewaldii, aeruginosa, buruana, etc</i>
68	<i>Scolopendriae</i> group, extruded capsules: <i>stellata, fanshawei, knuthii, etc</i>
69	<i>Trigona</i> and <i>Polygonae</i> groups: <i>trigona, canariensis, grandicornis, heterochroma, fruticosa, columnaris</i>
70	<i>Triacanthium</i> and <i>Tetracanthium</i> groups: <i>ballyana, glochidiata, subsalsa, ellenbeckii, etc</i>
# Euphorbias - Madagascar	
71	<i>Lacanthus, lophogona</i> group: <i>lophogona, pachypodioides, etc</i>
72	<i>Lacanthus, milii</i> group: <i>milii, beharensis, horombensis, genoudiana, etc</i>
73	<i>Lacanthus, viguieri</i> group: <i>viguieri, neohumbertii, etc</i>
74	<i>Pedilanthioides</i> and <i>Perrieri</i> groups: <i>croizatii, didiereoides, pedilanthioides, etc</i>
75	<i>Ankarensis</i> group, with caudex: <i>cylindrifolia v. tuberifera, decaryi v. tuberosa, francoisii, primulifolia, etc</i>
76	<i>Ankarensis</i> group, prostrate stems: <i>decaryi v. decaryi, decaryi v. spirosticha, cylindrifolia v. cylindrifolia, etc</i>
77	<i>Ankarensis</i> group, shrub type: <i>millotii, moratii, ankarensis, capsaintemariensis, etc</i>
78	<i>Bosseri</i> group: <i>bossier, platyclada, hedytoides, etc</i>
79	<i>Tirucalli</i> group: <i>tirucalli, stenoclada, leucodendron</i>
Euphorbias - New-World	
80	<i>Agaloma</i> group: <i>miseria, antisiphilitica, weberbaueri, xantii</i>
# Other Euphorbiaceae	
81	<i>Monadenium</i>
8	<i>Jatropha, Pedilanthus</i>
Crassulaceae	
83	<i>Kalanchoe</i>
84	<i>Cotyledon, Tylecodon</i>
85	<i>Crassula, Adromischus</i>
86	<i>Aeonium, Sedum, Sempervivum, etc</i>
87	<i>Pachyphytum, Graptopetalum, Tacitus, etc</i>
88	<i>Echeveria</i>
89	<i>Dudleya</i>
# Liliaceae	
90	<i>Aloe</i> , African: <i>variegata, melancantha, dorothea, striata</i>
91	<i>Aloe</i> , Madagascar: <i>conifera, haworthioides, capitata, etc</i>
92	<i>Aloe</i> hybrids
93	<i>Gasteria, Astroloba</i>
94	<i>Haworthia</i>
95	<i>Sansevieria</i>

96	<i>Agave, Yucca</i>
97	<i>Beaucarnea, Calibanus, Dracaena</i>
# Aizoaceae	
98	<i>Lithops, Conophytum, etc</i>
99	<i>Argyroderma, Aloinopsis, Pleiospilos, Fenestraria, etc</i>
10	<i>Mestoklema, Trichodiadema, etc</i>
# Asclepiadaceae	
101	<i>Caralluma, Huernia, Stapelia, Hoodia, Pseudolithos, etc</i>
102	<i>Hoya, Ceropegia, Cynanchum, Sarcostemma, etc</i>
103	<i>Fockea, Raphionacme, Petopentia, etc</i>
# Apocynaceae	
104	<i>Adenium</i>
105	<i>Pachypodium</i> , Africa
106	<i>Pachypodium</i> , Madagascar
107	<i>Adenia</i>
108	Portulacaceae: <i>Portulacaria, Ceraria, Anacampseros, Avonia, Talinum, etc</i>
109	Didiereaceae: <i>Alluaudia, Didierea, Decarya, etc</i>
110	Asteraceae: <i>Senecio, Othonna, etc</i>
111	Geraniaceae: <i>Pelargonium, Sarcocaulon</i>
112	Vitaceae: <i>Cissus, Cyphostemma</i>
113	Moraceae: <i>Ficus, Dorstenia</i>
114	<i>Fouquieria</i>
115	Cucurbitaceae: <i>Ibervillea, Gerrardanthus, Kedrostis, Seyrigia, Xerosicyos, etc</i>
116	Bromeliaceae: <i>Deuterochonia, Dyckia, Hechtia, etc</i>
117	<i>Pachycauls</i> , New World: <i>Bursera, Pachycormus, Bombax, etc</i>
118	<i>Pachycauls</i> , Old World: <i>Commiphora, Adansonia, Operculicarya</i>
119	Caudiciforms and Geophytes: <i>Ipomoea, Dioscorea, Sinningia, etc</i>
120	Orchids
121	Bulbs
122	Crested Succulents
123	Monstrose Succulents
124	Variegated Succulents
125	Cycads
★ DIVISION III - COLLECTIONS AND ARRANGEMENTS	
# Collections*	
126	Cacti
127	Succulents
# Arrangements**	
128	Dish Gardens
129	Anything Goes***
★ DIVISION IV - SPECIALTIES, COMBINING CACTI AND SUCCULENTS	
130	San Diego County Succulent
131	Baja Succulent
132	Mexican Succulent
133	Grafted Succulent
134	Seed grown by exhibitor
135	Miniature, less than 3 inches
136	Winter Show mini pots
137	Succulent bonsai
★ DIVISION V - DISPLAYS	
138	Displays and Exhibits
★ DIVISION VI - ART	
139	Paintings
140	Photography

* Collections - A set of 6 - 10 different specimens that are related by a common theme, genus, form, color or other character

** Arrangements - The combining of one or more plants for a scene or theme

*** Anything Goes -The creative use of succulent plants, pots and other media

2013 Cactus and Succulent Show and Sale

Presented by

The San Diego Cactus and Succulent Society

June 1nd & 2rd

At **Balboa Park** in

The Casa Del Prado

**Show: Room 101, Sat June 1, 10 to 3,
Sun June 2, 10 to 4**

**Sale: Courtyard, Sat June 1, 10 to 5,
Sun June 2, 10 to 4**

SDCSS Members only shopping Sat Jun 1, 9am to 10am

Strange and exotic plants from the far corners of the world gathered together for your viewing amazement!!



Courtyard sale of choice specimen plants for the novice and collector as well as handmade stoneware planters and pots!!

**Potting service will be available along with cultural information
See a great selection of “water wise” plants for landscaping.**

For additional information visit:

www.sdcss.net

If you have trouble finding a parking spot, use the **Balboa Park TRAM**. The free tram provides access to Balboa Park's museums and attractions. You can park in the Inspiration Point lot and wait at Tram Central, a shady arbor with benches. The tram will deliver you to the heart of Balboa Park. Trams pick up every 8 to 10 minutes. Riders may also board at one of the designated pick-up areas around the Park. The tram operates seven days a week from 8:30 am to 6:00 pm.

Don Patterson's Coffee in the Garden

Photos by Bev Grant



Ric & Marilyn Newcomer's Coffee in the Garden

Photos by Chris Miller



What's the Status? Baja & Old World Succulent Gardens

By Chris Miller

On the 23rd of April we had a nice work party at the Zoo Safari Park. Thomas Rea, Jack & Gene Ohmstede, Susan Lafreniere, May Fong and myself were out pulling weeds and cleaning up. The Old World Garden is very dry and for the most part so are the weeds. There is lots of clean up still to do and we can use all the volunteers we can get, one day, once a month or more.

We are also about to embark on a pretty significant project, we are going to build a new greenhouse. For that evolution we will need many skills besides weed pulling.

IT'S "Spring time" in South Africa !

Oct 27- Nov 9, 2013

\$4,775.00pp

Visit:

Cape Town, Considered one of the most beautiful cities in the world Kirstenbosch and Huguenot Botanical Gardens

Tour 2 square mile Kirstenbosch Botanical Gardens with a private guide. 8,000 + varieties of Indigenous flora

Private Succulent, Cactus, and Geranium Gardens of Alison James, a guide at Kirstenbosch Botanical Gardens Heritage Rose Garden at Boschendal Manor House Una Van Der Spuy's Garden Estate "Old Nectar" Huguenot fine Belgian Chocolate Factory in Franschoek

South African Jackass Penguins

Cape of Good Hope Nature Reserve by way of Funicular Car where the Indian and Atlantic Oceans Meet Old Cape Malay Quarters and Streetwires

Robben Island Where Nelson Mandela was imprisoned for 17+ years

Table Mountain, by way of Cable Car over 1,470 plant species (the 8th wonder of the world)

Voortrekker Monument & Taal Language Monument

Optional visit to three Bee Keepers Apiaries in Cape Town, Pretoria and Johannesburg

Nelson Mandela Home, Apartheid Museum, Soweto Tour

Pretoria, The Administrative Capital of South Africa

Where 70,000 Jacaranda Trees are in Bloom

2 Boma Feasts with Entertainment

Enjoy traditional and exotic Crocodile Tail, Kudu, and Wilderbeast

3 Safari Game Drives in Pilanesberg Game Reserve

A 142,00 game reserve on an extinct volcano

2 Safari game Drives in Chobe, Botswana, Plus Chobe River Cruising to view animals

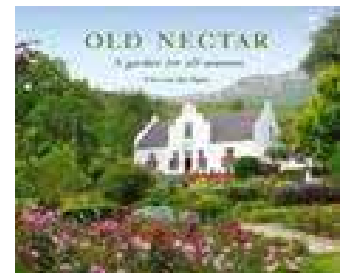
Historic Victoria Falls Village and Market Place: Victoria Falls (one of the 7 wonders of the world)

Personally escorted by Nicki Larson, (A licensed Travel Agent/Consultant for 32 years in California)

Includes: 21 Sightseeing Tours, 21 Meals, All air included from NY, 4 star Hotels/Lodges

To request a brochure or information: 916-481-7826 or: aviation@surewest.net

search youtube.com keyword: travel by nicki for a preview of this fantastic tour



The due date for submission of all material to be published in EyF will be the second-to-last Saturday of the month preceding the next monthly meeting. All submissions are to be made to the Editor. Please e-mail your articles to **Chris Miller at c.miller@cox.net**.

Central Coast Cactus and Succulent Society (CCCCSS) Seventh Annual Show and Sale

Central Coast Cactus and Succulent Society will hold their annual show and sale at the Ludwick Center in San Luis Obispo on Saturday and Sunday, May 25 and 26 (Memorial Day Weekend). The highly respected show features hundreds of succulents (including cacti) in 58 different classes. The plants are judged at three levels (novice, advanced and open), and first, second and third place ribbons are assigned to each level for each category. Special awards are presented for outstanding plants in eighteen different categories.

The sale portion of the show consists of six or so dealers in succulents and several specialty potters who bring an amazing variety of products to the show. Sunday afternoon, the Society holds an auction of show-quality plants that usually encourages lively bidding. Admission to the show is **free**, and the public is encouraged to attend, if only to appreciate the great variety of plants that occur in each of the many genera of succulents. Featured too are many “designer succulents” created by specialists in hybridization.



For more information on the show, please contact Wayne Mills at 805-481-3495 or wwmills50@hotmail.com or see the CCCSS website at centralcoastcactus.org.





P.O. Box 968 - Bonsall, CA 92003 PHONE (760) 728-2641 FAX (760) 451-0265 www.waterwisebotanicals.com

More information: [Jamie Higgins](#), Waterwise Botanicals, 760/728-2641
[Debra Lee Baldwin](#), 760/749-6272

**SUCCULENT CELEBRATION AT WATERWISE BOTANICALS,
JUNE 7-8**

North San Diego County's [Waterwise Botanicals](#) nursery will host a two-day Succulent Celebration on Friday and Saturday, June 7-8, 2013.

The first of its kind in southern CA, the event celebrates the beauty of succulent plants in low-water, easy-care landscapes, garden vignettes and container compositions. The event also celebrates and launches Debra Lee Baldwin's new book, [*Succulents Simplified: Growing, Designing and Crafting with 100 Easy-Care Varieties*](#) (Timber Press).

The stellar lineup of speakers includes garden photojournalist and bestselling author [Debra Lee Baldwin](#); plant explorer and hybridizer Kelly Griffin of [Altman Plants](#); and nurserymen/garden designers Tiger Palafox of [Mission Hills Nursery](#), Jeff Moore of [Solana Succulents](#), Michael Buckner of The Plant Man Nursery, and Tom Jesch of [Waterwise Botanicals](#).

Additional highlights include tours of beautiful, low-water gardens; potting demonstrations and workshops; a huge assortment of succulents and low-water plants for sale; experts on hand to answer landscape design and plant-care questions; 20 acres of nursery and display gardens to explore; and vendors offering succulent-themed gifts, container gardens and more.

Hours: 8:00am to 6:00pm both days. Free parking and admission. RSVP required to talk-plants@waterwisebotanicals.com or call (760) 728-2641.

Location: Waterwise Botanicals nursery (formerly Daylily Hill), just off Interstate 15 northwest of the Highway 395 exit (midway between Escondido and Temecula), at 32183 Old Highway 395, Escondido, CA

Photos: Access our [online library](#) of captioned, downloadable high-res images.

SDC&SS MEMBERSHIP APPLICATION / RENEWAL FORM

Dues are \$15.00 per year per individual, and \$5.00 per year for each additional household member. Newsletter is E-mailed. **Mailed paper copies are available for an additional \$5 a year. Each member has all the rights and benefits of the organization.**

Annual Dues
(E-mail Newsletter) \$15.00 _____
(Paper Newsletter) _____
First class delivery USPS \$5.00 _____
Annual Dues – International (Paper) \$30.00 _____
Additional Household Member(s) \$5.00 _____
Amount Enclosed \$ _____

Check **ONE** for type of membership:

NEW _____ **RENEWAL** _____

Member Information:

(Please PRINT to fill in ALL blanks below!!!)

Name: _____

Address: _____

City and State: _____

Zip + 4: _____

Phone Number: _____

Cell/FAX: _____

E-mail Address _____

Additional Household Members: _____

Do you wish to receive E-mail notifications of Club events and issues?

Yes _____ **No** _____

Mail this form or a copy, along with a check or money order payable in US Funds to SDCSS to:

**SDCSS Membership Dept
c/o Paul Maker
1245 San Pablo Drive
San Marcos CA 92078-4816**

(Rev. E-2, 2012-11-13)

San Diego Cactus & Succulent Society

Executive Board

President: **Kelly Griffin**
Vice President: **Chris Miller**
Secretary: **Jennifer Harris**
Treasurer: **Christine Vargas**

Directors

Peter Walkowiak
Pat Marshall
Rick Bjorklund
Chris Dawson
Kienan Parr
Geoff Twitchell

Standing Committees & Sub CommitteesEducation, Conservation & Exhibits

Conservation: **Joe Kraatz & Herb Stern**

Brag Table: **Candy Garner**

Plants of the Month: **Don Hunt**

Summer Show: **Peter Walkowiak**

Winter Show: **Peter Walkowiak**

Historian: **Terry Parr**

Library: **Don Hunt, Chris Miller, Jeanette Dutton, Steve & Kathy Harris**

Exchange Plants & Seeds: **Michelle Heckathorn & Sara Schell**

Grants: **Jerry Garner**

Sales, Meetings, Plant Sales & Supplies

Membership: **Paul & Carol Maker** pdmaker@roadrunner.com

Mailing: **Jean & Bill O'Daniel**

Annual Sales: **Chris Miller & Joe Kraatz**

Auction & Holiday Plants: **Kelly Griffin**

Monthly Plant Sales: **Joe Kraatz & Lynn Elliott**

Monthly Supply Sales: **George & Jerry Plaisted**

Benefit Drawing Table: **Collette, Kienan & Terry Parr**

Publicity: **Tom DeMerritt & Joe Kraatz**

Programs: **Kelly Griffin**

Reception: **Susan Hopkins & Judy Walkowiak**

Monthly Regalement: **Cathy Clark**

Picnic Regalement: **Laura & Tom DeMerritt**

Hospitality: **Sara Schell**

Liaison

Balboa Park Desert Garden: **Susan Hopkins**

CSSA Affiliate Rep: **Peter Walkowiak**

SD Botanic Garden: **Phyllis Flechsig**

SD Botanical Garden Foundation: **George Plaisted**

SD Floral Association: **Jeanette Dutton**

SD Zoo Safari Park Baja & Old World Gardens: **Chris Miller**

Editor: **Chris Miller** (619) 258-9810 c.miller@cox.net

Webmaster: **Gunnar Eisel**

Web Site: www.sdcss.net

Please address correspondence to:
The San Diego Cactus & Succulent Society
P.O. Box 33181
San Diego, Ca 92136-3181