

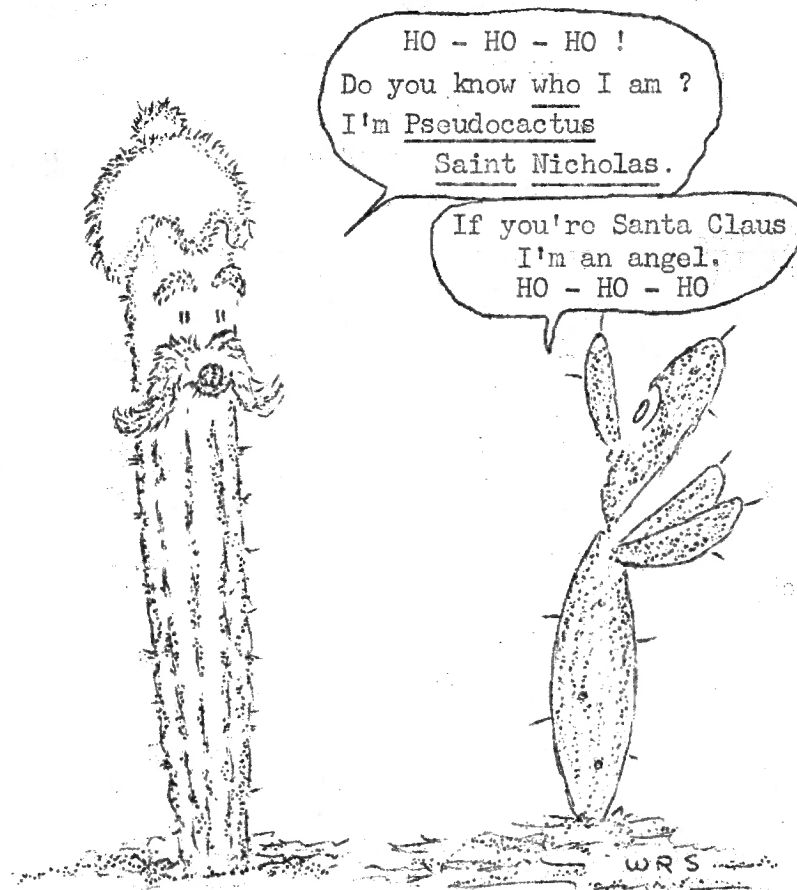
MAMMILLARIA THORNERI

# Espinas y Flores

BULLETIN OF THE SAN DIEGO CACTUS AND SUCCULENT SOCIETY  
*Affiliate of the Cactus and Succulent Society of America, Inc.*

.....  
TOMO NUEVE, NUMERO DOCE  
.....

.....  
DICIEMBRE 1974  
.....



HO, HO, HO !

1974 "Espinasy Flores" Staff

Forty-one individuals contributed their ideas, thoughts and time in writing for the pages of "Espinasy Flores", our Club bulletin, in 1974.... a very sincere and special "Thank you" to each of you...your efforts were appreciated by many persons to the extent and in a manner that cannot be adequately expressed in words.

BAILEY, Owen Louisville, Ky.	Anita HEYWOOD Glendale, MO.	Julianne RICE Holtville, CA
Bette BAKER Pacific Beach, CA	Audrey JOHNSON Escondido, CA	Pat RILEY Hamilton, New Zealand
Matthew BARISIC San Diego, CA	Nibby KLINEFELTER San Diego, CA	Dieter SCHMIDT Germany
"B" Mister San Diego	Ray LaMASTER San Diego	C. M. SCHWINK Des Moines, IA
Billy 'The Kid' BISHOP Rancho Bernardo, CA	Madelyn LEE Vista, CA	Chester M. SCOTT Trinidad, COLO
Francis J. BORG Paola, Malta, EUROPE	Oliver & Sophie LOYLAND San Diego, CA	G. STANLEY San Francisco, CA
Mary Lou CARGILL Ft. Worth, Texas	Art & Del MONTAGUE Riverside, CA	Doc. R. V. VAUGHAN San Diego, CA
Dr. Philip G. CORLISS Mission Beach, CA	Martin L. MOONEY Chula Vista, CA	Ellie WACKER Las Vegas, NEV
Anthony D'ATTILIO San Diego, CA	Brent NORTON Calimesa, CA	Joe WERLING Los Angeles, CA
J. Warner DODD Phoenix, ARIZ	Thelma O'REILLY La Mesa, CA	Alice WELLS San Diego, CA
Margaret EVANS Pacific Beach, CA	Leo PICKOFF Riverside, CA	Edith WERNER San Diego, CA
Ed & Betty GAY Tarzana, CA	Dr. George E. RADWIN San Diego, CA	Dorothy WILLIAMS Sacramento, CA
Jo GOELZHAUSER St. Louis, MO	Evon RAY Sacramento, CA	C. M. WILLS Honolulu, Hawaii

.....  
A DELIGHTFUL REGALEMENT for the November meeting was prepared and served by nine energetic and imaginative club members:

Norma BARISIC	Margaret EVANG	Verna PASEK
Neta COTTEN	Maria J. FISHER	Mary PRAT
C. L. BEMBOW	Audrey JOHNSON	Edith WERNER

.....  
Please note --- Ye Ed's "alphabet mechanism" slipped two important 'cogs' in the long list above. Shall we go back and "recog" them? The two were:

Helen HEGYI, Escondido, CA and Maria REEDER, Spring Valley, CA  
Sorry Helen and Maria !!

## SUGAR PLUMS IN YOUR HEAD ?

The annual problem of selecting Christmas gifts is at hand. If the gift is for someone who has a hobby--growing cacti, for example--the problem is easily solved. Instead of giving a necktie or lace hankie that might not suit the taste of the recipient, you have the splendid alternative of giving a book or subscription related to the hobby.

That something, the gift, may be a bit extra and extravagant which the person might hesitate to purchase for himself.

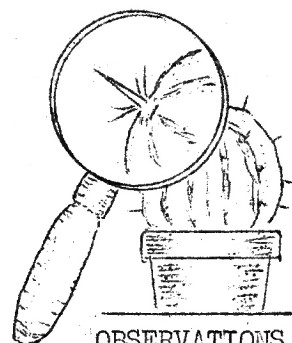
Along this line I have two suggestions for your consideration this year end. While they are similar in most respects, they have their own unique virtues:

1) Membership in "The Exotic Collection" is available for \$6.00 (U.S.) for a full year from W. T. Neale & Co., Ltd., 16 Franklin Road, Worthing, Sussex, England, DN13 2 PQ. Membership includes an eight-page issue of "NOTES" each month, with front and back cover and double-spread center fold of color photos. In addition, there are two "Photographic Plates" each month with descriptions of the illustrated species. The notes are written by Brian and Edgar Lamb. Of considerable interest to "foreign members" are the Overseas Letters sent frequently with the regular material. They contain most interesting letters from cactus growers in Africa, Australia and such other exotic lands as the United States. Each year there is a free distribution of seeds to members and offers of more seeds and plants at reduced prices.

2) A more recent entry is "ASHINGTONIA" which began bimonthly publication in July 1973, under the sponsorship of Clive Innes and John Brooke of Holly Gate Nursery. Each bimonthly issue contains twelve pages of text and MANY EXCELLENT COLOR PHOTOGRAPHS. The editor is John Donald, well-known cactus authority, and there are guest articles from such notables as Gordon Rowley and others. I was delighted to find the newest cactus and succulent discoveries pictured in such excellent color and so well described in the pages of "Ashingtonia". An added benefit is a catalog of the species in each of the cactus genera. This is a most welcome list, considering the confused state of names in the succulent families. Send \$7.50 for subscription to HOLLYGATE REFERENCE COLLECTION, Ashington, Sussex, England.

This is also the time for paying taxes. San Diego property taxes have become confiscatory. With additional school taxes planned by the county and the state, there is little incentive to own property or to try to save for one's old age. Example: I am now paying, each year, in taxes, one and one-half times what I paid for the entire property. But death, like taxes, is inevitable..... I would urge members with valuable books and plants to be sure to have a will to assure the passing of such valuables to the San Diego Botanical Garden Foundation, Inc., Casa del Prado, Balboa Park, San Diego, and the San Diego Cactus and Succulent Society. Good intentions cannot be surmised by the executor of your estate, so put your thoughts in writing. Gifts to non-profit foundations reduce the expenses and taxes on your estate.

Jose will spend Christmas with his mother and family in Mexico and meet me in Guadalajara to return to the States. Hasta la vista and Merry Christmas to all club members and readers of 'E y F'. 3



OBSERVATIONS of  
Cacto-Phil CORLISS

R A R E P L A N T S .

- - - -BOTIQUE- - - - .

9150 Fletcher Parkway .  
La Mesa, CA 92041 .

Ph. 461 2646 .

. . . . .

In August I opened my "Rare Plants Botique"  
at 9150 Fletcher Parkway in La Mesa. I'm very  
pleased. It is hard work but I love it.

It would be nice if you passed the information  
on to members of the San Diego Cactus & Succulent  
Society. All members are invited to visit my botique.  
If they will present membership cards in the Club,

they are eligible to a discount.

Come see the Botique when you're in the area. You'll enjoy visiting with  
plants and the plants will enjoy meeting you.

. . . . . Mary Prat

. . . . .

"HANDS ACROSS THE BORDER"  
BOX IT AND BRING IT !

There'll be an area over against the wall at the December meeting where  
Bob and Suzanne Taylor will be receiving useful and unneeded or excess items from  
members' homes, such as shoes, clothing, wearing apparel, utensils, even \$\$\$\$'s.

Bob and Suzanne will incorporate all such items into their "Hands Across  
the Border" program for the advantage and benefit of youngsters south of the bor-  
der who enjoy less of the good things of life than their counterparts north of  
the border. All items will be used and distributed to the greatest possible ad-  
vantage. Items which have "expired" as to their usefulness in your home will  
find new homes and great and renewed activity in new homes south of the border.

Vaya con Dios. . . . . Box it and bring it !!

. . . . .

You still there Sr. Cereus PERUVIANUS, 9 feet tall, at the home of  
Mrs. L. H. Ingram. . .and do you still have a price on your cephalium,  
and may we call you at 461-6309 ? Thank you Senor.

. . . . .

DECEMBER MEETING -- DEC. 14th, ROOM 101, CASA DEL PRADO, BALBOA PARK  
at 1:30 p.m.

GREAT ACTIVITY AS USUAL, except there will be no 'Official Program'.  
The highlight of the meeting will be a gift plant from the Taylor Cac-  
tus Garden, one plant to a member, the plant of your choice when your  
number is called. Or you just may be called by 'name', and after all  
names are called there should be no strangers in 101. Excess plants  
will be auctioned, thereby you have two or more chances to obtain fine  
plants.

. . . . .

REGALEMENT, W-O-W, and HOW !! The "Hapoman Highlight of the Year"  
In addition GOOD FELLOWSHIP --- all you can muster --- and in the C&S  
Society, that's quite a lot.

FINALLY--December is "Dues" month, come prepared to/in the clear in '75.  
One whole year, T W E L V E MONTHS for only \$5.00. You can't beat it !

Vaya con Dios, senors y senoras.

A Cactus-a-Month keeps Doc Boredom Away

"Christmas Colored Cacti"

Dr. George E. Radwin

Ho!ho!ho! 'Tis the season to be jolly, but take that prize cactus specimen off your hearth, unless you want to lose the cactus and, in the process to inoculate Santa with cactus-fever (a not-so-rare and incurable condition whose major symptom is the insatiable craving to acquire succulent plants, especially those with spines). Inflicting this enjoyable ailment on the round man with the red suit would seem rather cruel for two reasons. Firstly, he is reported to live in a climate where few succulent plants could survive (I know - sempervivums, etc. but let's not quibble), and secondly, he is so busy for most of the year that, unless Mrs. Claus catches the bug as well, all those lovely plants will certainly suffer from neglect.

And what has all this to do with my usual semi-scholarly (or should that be quasi-scholarly) treatment of a cactus group? Well the category at issue is "Christmas colored cacti" and try as I might, I couldn't find evidence that anyone had ever stuck his neck out in print concerning this "group". In any case, any plant sporting yuletide colors is invited. Certainly most cacti have a green ground-color. That's a good start. And many have more or less white wool, that's two out of three. And if, perchance there are red flowers fruits, or spines, perfectamente!

CACTUS SOCIETY  
HOLDS MEETING

Martin Mooney\* of Chula Vista signed the form and handed it to President Jim Stalsonburg, who noted the San Diego Cactus and Succulent Society had just enrolled its 200th member.

Mooney and his wife, Pat\*, were honored this weekend at the 10th anniversary meeting of the society held in the Floral Building at Balboa Park.

Members of the club and their guests packed the meeting room of the building, with extra chairs filling the place right up to the officers' table in the front and circling around the long refreshment table in the back.

GARDEN PLANNED

Items of business included election of officers, plans for a unique succulent cactus garden at Balboa Park, and a keynote presentation by a Tarzana couple, Ed and Betty Gay, who fly into Baja California to collect rare specimens.

The cactus garden at Balboa Park will be a major project of the club, which started 10 years ago with a handful of local members\*\* and now has people from all over the world on its roster.

VARIETY OF PLANTS

The garden will be across from the Village Place in the park, on the east side, above Florida Canyon. Mrs. Nibby Klinefelter, publicity director, explained.

Plants will include a wide range of varieties and sizes from a giant 20-foot-high Euphorbia tirucalli, commonly called a milk tree, to a tiny ground-hugging Echeveria seedum.

Now officers of the society include Mrs. Ione Hubner, president; Walter Scott, first vice president; Oliver Loyland, second vice president; Mrs. Harriet Sopp, recording secretary, Hazel Scott, and outgoing president, Jim Stalsonburg.

(San Diego Union, Dec. 6, 1970)

\*\*Thirteen original members, 1962

---

Kim and Bea ARNOLD  
Walter and Mable GREENWOOD  
Cleoves HARDIN, President  
Alfred and Perlso LEWIS  
Maria REEDER  
Troy SHIPMAN  
Bob and Suzanne TAYLOR  
Wilbur and Eva WIER

\*Martin L. MOONEY, nominee for President 1975

\*Pat MOONEY, Registrar for the 1975 CSSA Convention in San Diego, May 12-16, 1975

## THE PARTS OF A FLOWER

A. Anonymous Contributor  
(alphabetically)

- ANTHER** -- The pollen-bearing part of the stamen, borne at the top of the filament, sometimes sessile (not stalked).
- CALYX** -- The outer circle of floral envelopes whose individual parts are termed sepals. The sepals may be separate or marginally coherent, in the latter case forming a saucer, cup, bell or tube.
- COROLLA** -- Inner circle or whorl of a floral envelope. If the parts are separate, they are petals; if not separate, they are teeth, lobes or divisions, or are undifferentiated. The corolla is commonly the colorful, showy part of the flower.
- FILAMENT** -- Thread, particularly the stalk supporting the anther.
- FLOWER** -- The organ or the combination of organs of reproduction in a plant;  
Regular: actinomorphic  
Irregular: zygomorphic as in *Zygocactus*, *epiphyllanthus* or *cleistocactus*.
- OVARY** -- Ovule-bearing part of a pistil, becoming (sometimes with attachments) the fruit.  
Superior ovary: One borne above the point of attachment of perianth and stamens, or surrounded by a hypanthium that is not adnate to it, is a superior ovary.  
Inferior ovary: When below attachment of these floral envelopes and adnate to them, it is an inferior ovary. When inferior the perianth and stamens are hypogynous or under the ovary.
- OVULE** -- The body which, after fertilization, becomes the seed; the egg-containing unit of the ovary.
- PEDICEL** -- Stem of one flower in a cluster.
- PERIANTH** -- The two floral envelopes considered together. Commonly employed for flowers in which there is no clear distinction between calyx and corolla, as in lilies where the individual parts are sometimes called 'tepals'.
- PETAL** -- One of the separate leaves of a corolla, usually colored and more or less showy.
- PISTIL** -- The ovule-bearing body, later becoming the seed-bearing organ, with style and stigma.
- POLLEN** -- Spores or grains borne by the anther. It contains the male element of the flower. Sometimes it is not granular as in orchids and milkweeds.

(Continued on back)

'E y F' Dec. 1974

PARTS OF A FLOWER, continued from page 7:

SEPAL -- One of the separate 'leaves' of a calyx, usually green and foillaceous.

STAMEN -- The unit of the androecium and typically comprised of anther and filament or sometimes reduced to only an anther. It is the pollen-bearing organ of a seed plant, more specifically, the male organ. (Androccium, the stamens of a flower collectively)

STIGMA -- The part of the pistil that receives the pollen, commonly found at the tip of the style and variously enlarged.

STYLE -- The more or less elongated and often slender part of the pistil between the ovary and stigma.

.....

References:

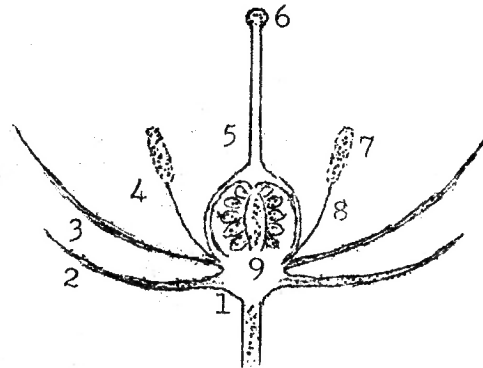
BAILEY, L. H.  
 "Manual of Cultivated Plants"

BAILEY, L. H. and Ethel Zoe BAILEY  
 "Hortus Second"

CHIDIMIAN, Claude  
 "The Book of Cacti and Other Succulents"

JACQUES, H. E.  
 "Plant Families"

SINNOTT, Edmund W. and  
 WILSON, Katherine S.  
 "Botany, Principles and Problems" . . .  
 and many more.



Dicotyledonous seed plant

- |              |            |
|--------------|------------|
| 1 receptacle | 6 stigma   |
| 2 calyx      | 7 anther   |
| 3 corolla    | 8 filament |
| 4 stamen     | 9 ovary    |
| 5 pistil     |            |

Note: A dicotyledonous plant is one that produces two seed leaves.

QUESTION: "What's wrong with plant names?" ANSWER: "Flowers."

"Flower structure has been the most important guide to plant classification since before Linneaus. Because of the general lack of flowering material, floral morphology has been neglected by agave taxonomists. Berger employed some floral characteristics in setting up his sections, but the flowers of many species he and others described were, like their origins, unknown.

"The namers of the agaves cultivated in Europe were horticulturists concerned with naming their novelties. The names satisfied their needs for communication, but the practice gave taxonomy a poor start. It set a precedent that conservation and ignorance follow and that is inadvertently supported by the priority of names.

"When you name a thing, you have it, in a limited sense, but a label does not always tell what is inside. Every agave is a one-million-year-old package still ticking out genes and, to this practicing taxonomist, they sometimes appear like challenging fiends. . . .The Agave Family of Sonora, Howard Scott Gentry.



1930

"Backward, turn backward, O Time, in your flight,  
Make me a child again, just for tonight."

(Elizabeth Akers Allen, 1832-1911)

C A C T U S  
and  
S U C C U L E N T S

McCABE CACTUS GARDEN

San Diego, California

\* \* \* \* \*

FOREWORD

I am glad to be able to give you my new list of plants; I have been working hard the last two years to get a start of these plants to offer you.

Some plants I have very few of, the first to order are the first to get them, so may I ask you to make a few second choices in ordering, if possible, or for the higher priced rare ones, write about it, for they come and go, and come again, and you may have to wait your turn for me to locate one.

Money Orders are preferred. Allow 10 cents for postage on each plant for east of the Rockies, and 5 cents for west of the Rockies; extra postage will be refunded, larger types will be sent by express.

I will exchange or buy outright any rare desirable plants, and will be pleased to know what you have, if names are not known, a sample will be required to identify, or picture.

To dealers we have a few that we can sell in quantity at a wholesale price.

Large plants for landscaping being grown. Write for list.

BOOK ON CACTUS

William Watson's Cactus Culture for Amateurs, illustrations of many cactus, \$1.50.

There are two booklets that will be of interest to cactus and rock garden fans. One "Herbaceous Perennials" farmers bulletin No. 1381, 15¢. Other, "Cacti" circular No. 66, 15¢. These can be obtained at U. S. Dept. of Agriculture, Washington, D. C.

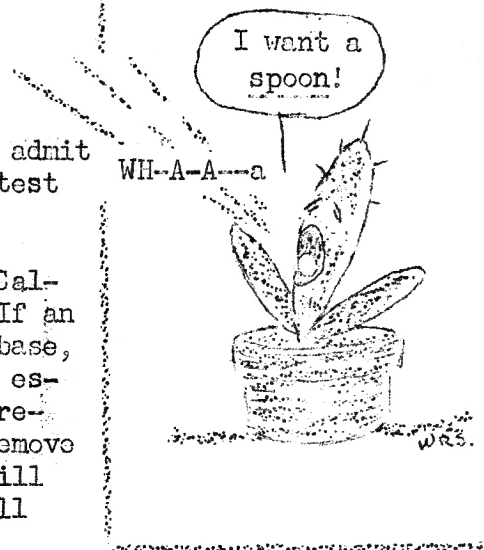
I have met up with several dishonest dealers in my business in the past, if anyone is interested in profiting by my experience with them I will gladly give them my so-called black list, and would be glad to be warned of your bad customers. These are mostly people who deal on a credit basis or a large scale and refuse to pay their bills. My retail customers as a whole have been very fine with me. I endeavor to please everyone and be a square shooter; that means real satisfaction on both sides.

You are welcome to visit my garden when in San Diego, California.

TOOLS--AND THEIR NEED

Man isn't the only animal which has learned to use tools but judging by the average garage one must admit he is way out front. His tool inventory is the greatest altho many of them may never be used.

The sea otter off our rocky coast of Southern California is a resourceful user of a stone age tool. If an otter is unable to detach an abalone from its rocky base, the otter may crack the abalone's shell with a stone especially selected for the purpose while the abalone remains firmly attached. Or if the otter is able to remove the abalone, the otter while floating on its back, will balance the abalone on its stomach and crack its shell with a stone. Either way, end of abalone.



One day at the Zoo we observed a Chimp using a long stick to probe under the fence to gather a growing bit of vegetation which seemed at the moment to have special appeal to the chimp. One way trip for the 'veg'. A skimpy salad but a chimp idea.

Those of us in southwest U. S. have read much about the Galapagos finches and the many species off the coast of Ecuador. One species of finch has learned to hold and manipulate a cactus spine in its beak to extract larvae from holes in the trees.

Have you ever watched the tendril of a plant move about in a circle seeking a 'crutch' out in space? . . . . . Ye Ed

CACTI IN WISCONSIN --- Excerpt from 'Spinal Column', Wisconsin C & S Society:

Major housing units at the Milwaukee Horticultural Conservatory consist of three bee-hive shaped glass domes, each 140' across at the base and 87' high. The domes are designed to capture maximum amounts of light in the Detroit area. Planning included studies of sun reflection and shadows for all seasons.

A 'skin of glass and aluminum' is supported by a network of reinforced concrete supports. To prevent plants from being burned by the intense light that enters the dome, the heat is dissipated by a stream of fresh air circulated up and out of the top of the dome. Air may be completely changed in 3 1/2 minutes.

One dome called the "Arid House" has a little oasis in its center which makes it possible to cultivate majestic Royal Palms in a way they like--with their 'feet' in the water. Health and vigor of plants inside the dome are pleasant to behold.

There are many mature cacti specimens including Ferocactus and Saguaros, as well as Agaves, which is a bit surprising for a 'new' collection.

Mr. Elmer Thrun (member of our Society) is in charge of the Arid House. He explains how the Wisconsin Society obtained possession of the Saguaros. The State of Arizona was constructing a new highway at about the time the Arid House was ready for them, thus the change of scenery.

None of the Saguaros were lost in the transplantation, instead some of them have responded with blossoms.

The Wisconsin C & S Society has about 60 members. Their meetings are held at the Horticultural Conservatory.

Story by Kathleen Kepner of the Wisconsin Cactus & Succulent Society.

'E y F' Dec. 1974

BUGS IN OUR CANYON

Audrey Johnson

Our little canyon is really beginning to take shape now. This winter we are expecting great things from our cactus and succulent plantings. Actually, with almost daily watering, they have done remarkably well throughout the intense heat of this past summer. Goeff's steps winding up the hillside lend a nice touch to our landscape.

So far the little furry creatures haven't bothered us too much (touch wood) but the bugs and insects seem to thrive in the whole area. It was here, one day, we watched a huge black spider dragging its legs the full length of the gully, only to realize later that the poor spider was helpless in the grip of a much smaller hornet which was back tracking and pulling the spider after it.

Another day I picked up a fallen pad of cactus--I thought--only to feel a squishy object moving in my hand. Did I drop that huge grub and dispose of it!

Butterflies too, are attracted to our little canyon, especially on sunny mornings at which time they add their own special charm to the scene as they dance over the plants.

Our moving of the rocks and frequent waterings naturally bring many insects to the surface. This is just fine for attracting and feeding the birds. Our young families of blue jays and roadrunners are now out exploring on their own. They often amuse us with their antics. The roadrunners seem fascinated by Goeff's stairway. They run up and down it before taking a clumsy leap for the bird bath where they balance precariously on its rim while sipping up the water with their long beaks and then tilting their heads back to let the water trickle down their throats.

The blue jays on the other hand swoop gracefully down the gully, with a flash of turquoise, as they chase away the smaller birds and "fall to" on the food in a much more businesslike manner. Of hummingbirds, we have had a bumper crop this year. All summer they have been twittering and swooping around our heads on flights to the feeders, often chasing away the larger bird "intruders". Even when I tended the flowers, I would often have one or more 'hummers' darting impatiently around me. When I moved to another area, they followed in a flash to investigate my changing activities. Mike has had the job of filling the hummingbird feeders and he has been kept really busy!

I must admit that the recent heavy rains did produce some problems on the steeper slopes, but we think and hope we have these problems licked now. All in all, we are very happy with our latest project....if only we had more time and more daylight!!

.....  
WORDS COMMONLY USED BY CACTOPHILES TO DESCRIBE CACTUS SPINES

A reader submits the following list of ten words and asks other readers to add words which they believe are descriptive.

- |          |             |           |         |          |
|----------|-------------|-----------|---------|----------|
| central  | divergent   | hooked    | porrect | recurved |
| deflexed | glochidiate | pectinate | radial  | straight |

"Billy--the-Kid" Bishop says there is still another very descriptive word which is sometimes used by inexperienced cactophiles: "ZØX #GD(Z#O&".

(It looks familiar but I'm at a loss to explain its meaning....Ye Ed)

PLANT-OF-THE-MONTH PRESENTATION

What would Club members think of having the "Plant-of-the-Month" presentation staged up front and center, or perhaps better yet, on stage in coming months. The change could even begin in December.

Attending members who sit in back rows, or diagonally across in the S.W. corner of Room 101 at meetings are visually handicapped, and they just might be missing a lot of what Madelyn and GER are talking about. It's a long, long way from the SW to the NE corner of 101 where the plants are shown and described. Too, the plants themselves are "the best" or the "select" from the gardens of members. The platform up front, centered and raised as it is, should provide an ideal spot for showing and telling about fine plants.

Surely, the audience, large as it is, and spread out from NE to SW, shouldn't have to suffer the added disadvantage or discomfort of having to look around, over or 'through' a sea of heads, or to stand up in front of others, to appreciate and enjoy the very fine plants of the month.

Maybe the plants will benefit by better staging and showing. They're deserving of all the attention we can give them. Don't you hear them applauding the idea? And that chorus of "Thank yous".

.....  
ATOMIC IRRADIATION

There's a process for the preservation of food by using atomic energy, it's called 'irradiation', and from early experiments it appears to work better than ice.

About 60 countries around the world are currently experimenting with atomic irradiation as a means of food preservation. In the U.S. special studies are being made. In effect, irradiation ends all the growth within a given product, thus delaying spoilage for weeks or months. Eventually, tho, some outside microorganisms do penetrate and natural breakdown takes place.

If the irradiated product is also vacuum-packed, it may remain fresh for several years. Meats, fish, fruits and vegetables all can be pasteurized or sterilized by atoms. Irradiated grains can be stored in bulk free of insect damage. Vast quantities of food which are lost each year to decay could be salvaged. The process has tremendous potential for fighting famine, particularly where facilities for refrigeration are limited.

Will the cactus which wishes to be preserved by irradiation first please hold up a pad.

.....  
"YE ED" EX With this December issue of Espinas y Flores, the three-year task of serving as "Ye Ed" comes to a close. No commitment can or should continue indefinitely. Change should be regarded as beneficial. Looking to 1975 and beyond, and with the CSSA Biennial Convention coming to San Diego in 1975 (May 12 to 16) much thought must necessarily be given to, and action taken toward making the convention a total success.

There is great ability and talent within the membership of the Club and it should respond and serve where needed. Now is the time for that talent to surface and move forward.

It has been a pleasure as well as a lot of work to produce Espinas y Flores for three years. The special reward has been the great help of many individuals who have been contributors and helpers. (Page 2)

My very sincere appreciation and thanks to everyone who has helped.

.....Ye Ed

. SAN DIEGO CACTUS & SUCCULENT SOCIETY .  
 .  
 . Affiliate of the .  
 . Cactus & Succulent Society of America .  
 .  
 . . . . .

PRESIDENT - Loyal J. BIBBEY, 490 Citrus Ave., Imperial Beach, CA 92032. . . . . 423 5133  
 1ST V. P. - Martin L. MOONEY, 97 K Street, Chula Vista, CA 92011. . . . . 427 6796  
 2ND V. P. - Richard G. LATIMER, 5990 Lake Murray Blvd., La Mesa, CA . . . . . 463 1655  
  
 TREASURER - Madelyn LEE, 2310 Bella Vista, Vista, CA 92083 . . . . . 1 727 1364  
 SECRETARY - Rose D'ATTILIO, 4124 47th Street, San Diego, CA . . . . . 281 9731  
 PAST PRES - William NELSON, 4253 Maryland St., San Diego, CA. . . . . 298 3349  
 YE EDITOR - Walter R. SCOTT, 3430 Wilshire Ter., San Diego, CA. . . . . 296 6022

1975 CSSA CONVENTION COORDINATORS

H. Warren Buckner, Dr. Philip G. Corliss and Walter R. Scott

BOARD OF DIRECTORS

1-year term: Dr. Leroy N. PHELPS and Wilson L. WELLS  
 2-year term: Oliver K. LOYLAND and Ione HUBNER  
 3-year term: H. Warren DUCKNER and August PFEIFFER

MEMBERSHIP in the San Diego Cactus & Succulent Society is open to all persons interested in growing cacti and other succulents and exotic plants. Membership currently is \$5.00 per year on an annual basis. Persons joining at other times may obtain back issues of the bulletin "Espinass y Flores" for the period of their membership so long as back issues are available.

ELECTION OF OFFICERS AND BOARD MEMBERS FOR 1975:

ARTICLE IV SEC 2 of the Club's constitution states: "It shall be the duty of the nominating committee to nominate candidates for the offices to be filled at the annual meeting in December." Nominees for 1975 are:

PRESIDENT - Martin L. MOONEY, 97 K Street, Chula Vista, CA 92011  
 1ST V. P. - Nibby KLINEFELTER, 2201 Fairfield Street, San Diego, CA 92110  
 2ND V. P. - REED PIERCE, 3525 Wilshire Terrace, San Diego, CA 92104  
 SECRETARY - Doris F. RAKE, 4410 38th Street, San Diego, CA 92116  
 TREASURER - Madelyn LEE, 2215 Mira Sol, Vista, CA 92083  
 CORRE-SEC - Jeanie MERRILL, 9306 Mesa Vista, La Mesa, CA 92041

BOARD MEMBERS: Mary H. BIRCHELL, 6070 Sarita Street, La Mesa, CA 92041  
 Capt. Wally MILLSON, 5289 Manhasset Drive, San Diego, CA 92115

ARTICLE IV SEC 3 reads: "The officers, except for the Directors, shall be elected by ballot for a term of two years or until such time as new officers are elected. The Directors shall be elected for a term of three years, two being elected each year. - - -"

ARTICLE IV SEC 2 reads: . . . additional nominations from the floor shall be permitted, provided the nominee is present and agrees to nomination.