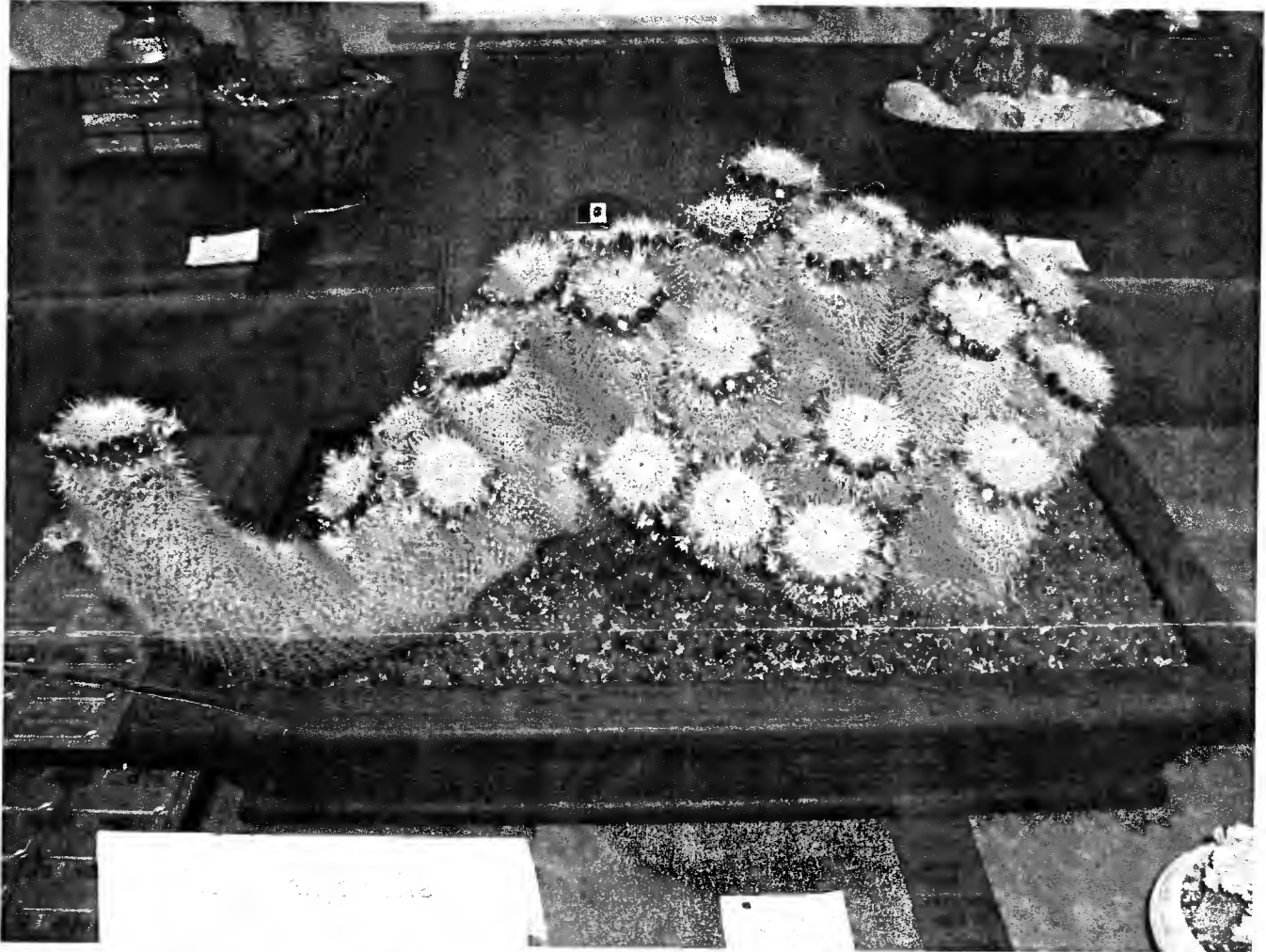


Espinas y Flores

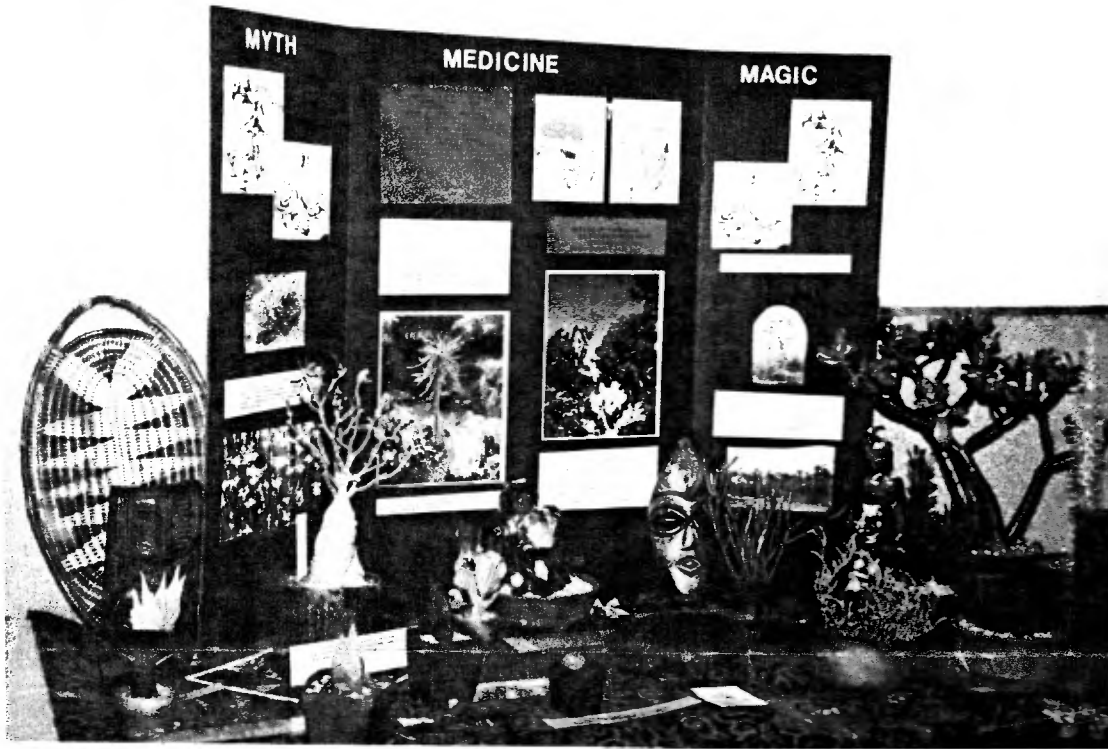
Newsletter of the San Diego Cactus and Succulent Society, Inc.
Affiliated with the Cactus and Succulent Society of America
Volume 35, Number 7, Saturday, July 8, 2000 at 1:00 PM



Photographs of our June show entries by J. Walker The top plant won the people's choice award

Staging and Show Preparation

Steve and Rowena Southwell are veteran show participants and have won awards for their beautiful plants up and down the state of California. Their names grace many trophies of our own club including some from this year's show. With show plants fresh in our minds, Steve wanted to reinforce great staging techniques to prepare for next year's event. Its never too early to prepare those beautiful plants for a show. Come find out the secretes of some real winners and don't forget to bring in as many examples as you can for a critique on how to make them even better. Casa Del Prado, Room 101, Balboa Park at 1:00 PM on July 8, 2000



A wonderful award winning display by Pam and Lee Badger at the 2000 Show.

Please send your letters, artwork, poetry, Cactus or Succulent of the Month articles, puzzles, comments, or criticisms, etc. to:

Tom Knapik
4669 71street
La Mesa, CA 91941

Phone 619-462-1805 e-mail eyf2000@aol.com FAX 858-569-8510

Newsletter submissions are due before the 14th each month unless other arrangements are made.

Espinas y Flores, the newsletter of the San Diego Cactus and Succulent Society, Incorporated, P.O. Box 33181, San Diego, CA 92163-3181, is published monthly with the exception of a combined May-June issue (11 issues per year). Newsletter circulation is approximately 330, with 20-30 issues going to educational institutions, botanical societies, cactus and succulent nurseries, local publications, related natural history events, exhibits, and other interested groups or individuals upon request. Subscriptions are \$15 per year for bulk mail within the U.S.A.

Opinions stated in the articles and editorials of Espinas y Flores are solely the opinions of the authors or editor and do not necessarily represent the opinions of other SDCSS members, the Board of Directors, or the organization in general. All materials submitted to Espinas y Flores for possible publication may be edited in form and content. All material in the Espinas y Flores may be reprinted by other nonprofit organizations (unless such permission is expressly denied in a note accompanying the material) provided that: proper credit is given to the SDCSS, Espinas y Flores, and the author. Please send one copy of the publication containing the reprinted material to the editor. Reproduction in whole or part by any other organization of publication without the permission of the editor is prohibited. Volume 35, Number 7, Published June 28, 2000.

JULY 2000 PRESIDENT'S MESSAGE

Our June Show & Sale was a success and it's because of our membership. The key ingredient in our club is our members and you turned out in force, volunteering your time to staff the many and varied jobs. This was a monumental effort and is greatly appreciated. One of the things that amazes me is how much work is required in the planning and staging of this event and how afterward, when looking back at the show weekend, how smoothly things ran and how effortless it seemed. This is truly due to all of our combined efforts. I would like to thank each and every one of you, there are just too many to list, who helped out at this year's show - GREAT JOB! Thank You Pam Badger for providing a fabulous breakfast and lunch for our judges and members. I'd also like to thank all who brought in dishes and goodies to compliment the luncheon, with a special thanks to Sandy Frost who brought in several varieties of delicious, homemade breads.

This show definitely re-enforced the talent and creativity our members. This was evidenced in the Quality and Quantity in what was shown. There were some fabulous educational displays. Our show provides a venue for the public to see and enjoy the cactus and succulent plant culture while promoting our society. We have several new members who are just as excited about the plants as we are!

As you know, club members are encouraged to volunteer their time at the San Diego Wild Animal Park. I would like to thank Chris Miller and all the volunteers who continue to help clear the Old and New World Cactus and Succulent gardens at the San Diego Wild Animal Park. This effort has helped our club maintain a Volunteer Status at the park. If you would like any information regarding this effort, such as dates and time when these activities occur, please contact Chris Miller (see FYI) or myself.

Sincerely, Thomas De Merritt, President SDCSS



REQUEST FOR HELP:

A PLANTING AREA FOR ELEMENTARY SCHOOL CHILDREN WITH SPECIAL NEEDS

I am a member of the San Diego Cactus and Succulent Society and a volunteer for the Senior Gleaners of San Diego County. The Gleaners are a nonprofit group. We are working with the San Diego School District to set up a greenhouse for children with special needs at the Lindberg-Schweitzer School, located on Balboa Avenue. Presently, no program exists for these children to learn about plants. This greenhouse will allow children to work with plants "hands on".

The school district will provide a vacant building on the school grounds for this project. This building requires lots of work. We plan on building workbenches, etc., to scale, for wheel chair access, so these children can have access to plants and planting materials.

I am asking for assistance from the San Diego Cactus and Succulent Society members. We need volunteer labor and materials. New or used material is satisfactory. Please feel free to contact me, Bert Elder at 619-463-1456 if you would like to make any donations to this cause, to inquire about what types of materials are needed or to volunteer your valuable time.

I hope that when this facility is completed it will allow the children to accomplish 95% of their planting tasks from their wheelchairs.

Sincerely, Bert Elder

CALENDAR OF UPCOMING EVENTS

■ July

— 2000 —

15-23 Henry Shaw C&S Show & Sale, Missouri Botanical Garden, St. Louis MO. Info Pam Schnebelen, 43 Wildwood Dr., Pacific MO 63069 314-316-9360 oschnebelen@mindspring.com

22-23 Northern CA C&SS Show, County Fair Bldg, 9th & Lincoln Way, Golden Gate Park, San Francisco CA. Info Marilyn Pekasky 510-236-6090

■ AUGUST

5-6 South Bay Bromeliad Associates Show & Sale, Rainforest Flora Nursery, 19121 Hawthorne Blvd, Torrance CA 90503. Info, Bryan Chan, 8110 Murietta Av, Panorama City CA 91402, 818-787-4265, bcbrome@aol.com

17-21 Canadian National Exposition's competitive C&S show, Toronto ONT Canada

19 British C&S Society National Show, Springfields Exhibition Centre, Camelgate, Spalding, Lincolnshire

19-20 Intercity Show & Sale, LA County Arboretum. Phone Woody Minnich at 661-944-2784, or Dick Hulett at 310-832-2262, or Tom Glavich, 626-798-2430. for more info.

19-20 Central Ohio Show & Sale, Franklin Park Conservatory. Info Bruce Brethauer, 2260 Indianola Av, Columbus OH 43202-3024, 614-267-4109, bbrethau@columbus.rr.com

21-25 Succulenta 2000, Kirstenbosch Botanical Gardens, Capetown, RSA. Info, Organizing Com, Succulenta 2000, Private Bay X10, Hatfield, 0011 South Africa. Phone +27-11-884-5588, FAX #27-11-884-5685. email kambroo@cis.co.za

25-27 Eastern C&S Conference, host Connecticut C&SS, Southbury Hilton, Southbury CT. Info (as soon as it is available) Jeannine Loya, 100 Rensselaer Av, Cohoes NY 12047

■ SEPTEMBER

2 Huntington Symposium, Huntington Botanical Gdns, 1151 Oxford Rd, San Marino CA. info 626-405-2160 or 2277

3 CSSA Board, Huntington Botanical Gdn

9-10 Mid-Iowa C&SS Show & Sale, Merle Hay Mall, Des Moines IA. Info Rebecca Hoepfner, 515-292-1289, email: rehoepf10170@aol.com.

9-10 Kansas City C&SS Show & Sale, Blue Ridge Mall

9-10 Houston C&SS Show & Sale, Houston Garden Center, Info, Mike Navolio, mnavolio@twistercom.com

FYI FYI FOR YOUR INFORMATION FYI FYI

⇒ **Wild News from the Wild Animal Park**, SDCSS and Palomar Cactus and Succulent members have stepped up to help with the Baja and Old World Succulent Gardens at the Park. **Chris Miller** has been leading the group which has been: **Juergen Menzel, Tom & Laura De Merritt, Marty Zirkle, Eugene Orth, Marcy Rose, Bert Elder, and Stan Yalof**. Someone from our clubs has been out there since Condor Ridge has opened. The Operations and Horticulture Departments knows we are out there and all appreciate our efforts. Please join in and help in the garden. Call Chris at Home 619-258-9915 or send e-mail to: MillerCR@SUPSHIP.NAVY.MIL.

⇒ **Do you subscribe to the CSSA's Cactus and Succulent Journal?** The longest running cactus and succulent publication is published by the Cactus and Succulent Society of America. This is part of three publications the CSSA publishes. The Journal is in color and has items of interest to scientists and amateurs. New species and explorations are highlighted as well as key articles on culture. The newsletter, *To The Point*, is mailed with the Journal and has information from different affiliated clubs and articles aimed at growing and understanding succulents. *Haseltonia* is a scientific bulletin for the CSSA and is published each year. SDCSS is one of the two largest affiliated Societies in the CSSA. Please join today and keep in touch with other succulent plant enthusiasts! For more info. call the club's affiliate representative, **Kelly Griffin** at 760-942-4866. or see the online form at: <http://www.cactus-mall.com/apps/form.mv>

⇒ **Beverly Kirkegaard** will be selling some of her Ferocactus, if you are interested please give her a call at, 619-670-1035.

⇒ **Michelle D. Heckathorn**, has accomplished a difficult task recently, "she passed the BIG test on the first try", according to **Carol Jean Wolcott**. The test was to become a "California Certified Nurseryman." Carol Jean stated that "Most people don't pass all parts of the test on the first try", Carol Jean herself should know these things, she is an active volunteer the Master Gardener Program. It is tough to become part of this group which is part of the Cooperative Extension Service in the State. Visit their booth at the Del Mar Fair, and don't forget to congratulate Michelle next time you see her. She also has an AS degree in Nursery and Landscape Management!

⇒ Speaking of the fair, I hope that you got to take a look at the Palomar Cactus and Succulent Societies exhibit in the Flower and Garden Show! A couple SDCSS members helped, but it is mostly through the efforts of our sister club, great job as always!

⇒ A gracious Thank You goes out to **Shirley Berry, Joe Quijada, Carol Jean Wolcott, and Jeff Wright** for their donations to the May Benefit Drawing Table.

WOW, What a Show!

An appropriate term to describe our June show. Although the number of entries was down, it was compensated by quality. I had two veteran show attendees mention that this was the best quality show they had seen and I agree. Spectacularly grown and staged plants were entered and I thank all those who took the time and energy to participate in this great event.

There are many club members that make this show successful to which we should give special thanks. Laura De Merritt who did behind the scenes work of 3 people from danish for the judges to table rentals, you're awesome. Tom De Merritt who's flowering *Echinopsis* generated more comments than most other plants. Did you know Tom had the most entries in the show, 60 in all. You inspire us to participate more by example. Joey Betzler, as co-show chair, has the experience and attention to detail, I personally could not function without. Kay Quijada, who graciously served as head clerk one last time, brought a level professionalism and organization that I really respect and appreciate. Pam and Lee Badger who put on a delicious spread Saturday in addition to creating two award-winning educational displays. They have a wonderful creative talent that adds so much to our show. And we can't forget the wonderful artwork of Dorothy Byer that adds another sophisticated dimension to the room. Rudy Lime's displays have amazed us over the years but for a moment consider the time and energy for one man to transport and set up so many fantastic plants every show. Rudy, you are truly incredible! Speaking of a Herculean effort, Michael Buckner manages to bring in the heaviest plants each year. His entries have transformed plants, soil, and rock into beautiful sculptures that are so impressive. I would also like to thank our judges Joe Clements, Jim Hanna, Tom Glavich, and Lee Phelps for doing a great job.

On the sales end of things, I am less qualified to comment but will mention a few people we should acknowledge. Tom Birt coordinated the vendor's contracts and spent hours programming the register. As treasurer, Herb Stern has done a fantastic job handling and dispersing funds and even had time to clerk our show. George Plaisted is the person who is responsible for reserving the rooms and space for our show each year. I personally want to thank Chuck and Jerry of Rainbow Gardens for participating in our show. The plant related books add another important dimension to our show and hobby. I also want to give credit to Steve and Rowena Southwell for travelling the farthest to participate in our show and sale. Thanks also to all the vendors for providing such high quality plants, pots, and pictures for sale.

The members listed below have helped in other ways to make our show a success;

Ross Schumway	Jean O'Daniel	Bill O'Daniel	Christine Miller
Cindy Weed	Susan Hopkins	Jeff Harris	Wilber Glover
Tom Anglewicz	Elizabeth Glover	Joe Kraatz	Carol Jean Wolcott
Spenser Maze	Tom Stiko	Joe Quijada	Melba Baxter
Phyllis Flechsig	Ethel Standish	Sandy Frost	Michelle Heckathorn
Terry Parr	Collette Parr	John Williams	Tim Paradowski
Dick Hulett	Barry Peck		

If you can think of anyone I missed please let me know so I can rectify the matter. Everyone who helped and all those who sold, entered, or purchased plants have made this event special, fun, memorable and one that I am proud to be a part of. See you next year.

Tom Knapik

Wow, what a listing you have below. The editors can not take credit for all of this work ... it is by Chris Miller. Don't forget to thank her when you see her. She did the major work, we will take any credit for mistakes! To save space the font is on the small side and many of the genera and species, etcetera are abbreviated. Many of the names can be figured out by looking up the division and class number in your last newsletter on the Classification Schedule. There may be some misspellings, sorry about that. If you can't figure out the plant name you could ask the exhibitor, their last name is with each plant listed.

Divisions are noted at the heading of each group of classes: Cacti, Other Succulents, Collections, etc. The columns are arranged in order of class (1-87), pot size (A and B), and ticket color (Green, Yellow, and Blue - G, Y, B respectively). First, second and third place ribbon winners are next, sorry honorable mentions are not listed. When you look at the list carefully you will see some blank spots. In some cases this represents no first or second or third place being awarded, it can also mean that more than one first, second or third place ribbon was awarded. We hope that you do not need a magnifying glass to read these pages. Besides helping with this list and the 2000 Spring Show, Chris is the SDCSS Representative that coordinates our club work in the Baja and Old World Succulent Gardens at the Wild Animal Park.

	BLUE - First Place	RED - Second Place	WHITE - Third Place		BLUE - First Place	RED - Second Place	WHITE - Third Place
	DIVISION I - CACTI						
2	B Y Quijada/U. pectinifera			14	B G Stiko/E. nivosus		
3	A Y De Merritt/P. schwebsiana			14	B Y Harris/E. nivosus		De Merritt/E. triglochidiatus
3	B G Osgrove/P. rullous	Miller/P. sp.	Osgrove/P. sauguiniflora	15	A G Heckathorn/T. bicolor	Miller/G. denudatum	Miller/G. sp.
3	B G		Stiko/P. comarapana	15	A G Miller/G. baldiana		
3	B Y De Merritt/P. maxima	De Merritt/P. communtans		15	B Y Quijada/T. lophothele		
4	A G Parr/N. graessneri			16	A B Hulett/E. sneedii	Hulett/C. poselgeriana	
4	B Y P Badger/N. turecekianus	Henderson/N. sp	Harris/N. scoza v. muralis	16	B B Hulett/E. hendricksenianus		
5	A B Hulett/G. gibbisum			16	B Y De Merritt/C. nickelsiae	De Merritt/C. sulcata	
5	A G		Parrott/G. chiquitanum	17	A B Hulett/M. humboldtii	Hulett/M. hoolii	Hulett/M. candi. v. eac.
5	A Y L Badger/G. multiflorum	Wright/G. mihanovichii		17	A G Miller/M. sp.	Parrott/M. lasiacantha	
5	B G Parr/G. multiflorum	Parrott/G. anisitsii		17	A Y	L Badger/M. duwei	Harris/M. eichmannii
6	A B Avery/R. heliosa var. heliosa	Hulett/G. gibbisum		17	B B Southwell/M. lenta	Southwell/M. theresae	Southwell/M. rei. v. lep.
6	A G Paradowski/S. stein. v. kim.	Wade/R. heliosa	Parr/R. donaldsonii	17	B G Parr/M. geminispina	Parrott/M. candida	Paradowski/M. bomb.
6	B G Paradowski/R. spinosissima	Stiko/R. krainziana		17	B G	Parrott/M. carmenae	Miller/M. sp.
6	B Y Harris/S. mentosa	Harris/S. aranacea		17	B Y Quijada/M. matudae	Quijada/M. se. v. tetracantha	P Badger/M. sp.
6	B Y	Quijada/R. mscula		18	A B Hulett/A. ritteri		
7	A B Hulett/L. sp.			18	A B Hulett/P. strobiliformis	Hulett/A. fissuratus	Hulett/E. micromeris
7	B G Stiko/L. sp. cf. grandiflora			18	A G Wade/A. fissuratus	Parr/O. denegrii	Wade/A. retusus
7	B Y De Merritt/L. arachnacantha	De Merritt/L. tiegeliana		18	A G	Wade/A. Fissuratus	
8	A G	Parrott/D. ferricola		18	A Y Quijada/A. kotscho. v. alb.	L Badger/A. retusus	Harris/A. retusus
8	A Y Quijada/M. matanzanus			18	B B Southwell/A. ritteri	Hulett/A. fissuratus	
8	B B Hulett/M. glaucesums			18	B Y L Badger/L. principis		
8	B G Stiko/M. matanzanus			19	A B Hulett/A. myrostigma	Hulett/Astro. hybrid	
9	B B Flechsig/C. tenissima monstrose			19	A G Parrott/A. myriostigma		
9	B G Wade/C. cf. barquitenis			19	B Y De Merritt/A. capricorne	P Badger/A. orn. "Seizerbum"	
9	B Y De Merritt/C. hypogaea	Williams/C. columna - alba		20	A Y		Wright/F. ladispinas
10	A B Hulett/N. occulta			20	B G Parr/F. stainesii v. pilosus	Paradowski/F. emoryi form	Parr/F. emoryi form
10	A G Parr/N. nidus	Parrott/N. pilispina		20	B Y	Griffin/F. glaucescens	
11	A G Osgrove/B. samaipatanus			21	A Y Griffin/E. crispatus	Griffin/E. sp. Variegata	
11	B Y Williams/D. rhodacantha	Williams/M.cf. hystrix	De Merritt/M. aurantiaca	21	B Y	De Merritt/E. horizontalo.	De Merritt/E. albatu
12	A Y	Williams/E. melanoste		22	A G Parr/R. lindbergiana	Parr/R. quellebombensis	
12	B B Flechsig/H. sp			22	B B Southwell/H. salicornoides		
12	B B Hulett/P. bylesianus	Peck/C. sinilius		22	B Y Williams/R. horrida		
12	B G Parr/O. hend. densilanatus			23	A B Avery/T. floccosus		Hulett/P. sp.
12	B Y	Harris/C. straussi		23	A G Parr/T. weberi	Miller/O. long. v. brevispena	
13	A G Osgrove/C. senilis			23	A Y Griffin/P. Bonnieae	De Merritt/O. brachyclada	Harris/T. pacdiophylis
13	A Y		Williams/P. pringeli	23	B B Hulett/O. picardoi		
13	B G Parr/C. senilis			23	B G Parrott/P. godseffiana Variegata		
14	A B Hulett/E. triglochidiatus			23	B Y Harris/O. pachypus	De Merritt/O. brevispina	
14	A Y De Merritt/E. virid. v. davi.	De Merritt/E. viridiflorus	De Merritt/E. chloranthus	24	B Y	De Merritt/M. nealii	L Badger/O. macdougl.
				25	A B Hulett/Mam. sp. Varigated	Hulett/N. leninghausii	Avery/Mon. sp. Crest

25 A G	Parrott/Mam. sp. Monstro.		Parrot/Echinop. Mons.	40 B Y	Griffin/D. candida	
25 A G			Parrott/Astro. ca. Crest	41 A B	Avery/E. milii 'Lemon Drop'	
25 A Y	Griffin/Astro. my. Crest	Stern/Mam. gemnisp. Crest	Wright/Hil. aur. Crest	41 A G	Horak/E. milii 'Do. Duty'	
25 A Y	Griffin/U. pectinif. Variegata			41 A Y	Henderson /E. milii 'Spe.'	Williams/E. didie. Hyb.
25 B B	Flchig/Cleisto. strau. Crest	Buckner/Myrt. geo. Variga.	Hulett/Espositoa Ritteri	41 B Y	L Badger/E. fianarumtsoae	
25 B G	Miller/Opuntia Crest	Parrott/Monv. spega. Crest	Parr/O. micr. Monst.	42 A B	Hulet/E. platycladia	
25 B G		Parr/Mamm. spinosiss. Crest		43 A B	Flehsig/E. cap-saintemari.	
25 B Y	Henderson/Mam. gemnisp. Crest			43 A G	O'Daniel/E. cap-saintemari.	Bunch/E. dec. v. longi.
	DIVISION II - OTHER SUCCULENTS			43 A Y	Byer /E. tulearensis	De Merritt/E. ambovomben. De Merritt/E. caspsa.
30 A Y	Quijada/D. madagascariensis			43 A Y		
30 B Y	Williams/A. montagnacii	Williams/D. trollii	Williams/A. ascendens	43 B B		Peck/E. sp.
31 A G	Parr/L. bromf. v. mennellii	Parrott/Argfissum aiavfigi	Parrott/J. albata	43 B Y	Byer/E. ambovombensis	
31 A Y	Cornett/G. album	Cornett/C. candidissima	Wright/L. sp.	44 A B		
31 A Y			Byer/D. wilmo. s. imp.	44 A G		Avery/E. aeruginosa
31 B G	Osgrove/F. sp.		Bunch/P. helii	44 A Y		Miller/E. aeruginosa
31 B G			Bunch/N. sibbettii	44 B B	Peck/E. 'Snow Flake'	Byer/E. schizacantha s. rhodesica
31 B Y		Byer/C. purpurea		44 B Y	L Badger/E. hor. 'Snowfl.'	Peck/E. horrida Noel/E. kibwez. Crest
32 A B	Noel/O. deltoides			44 B Y	L Badger/E. fruticosa	De Merritt/E. tortirama Demerrit/E. virosa
32 A G	Bunch/O. deltoides	Innis/O. deltoides	Parr/N. sibbettii	45 A G	Parr/E. obesa	Horak/E. buple. x susanna
32 A Y		Byer/R. flanaganii	Harris/T. bulbosum	45 A Y	Henderson/E. bupleurito.	L Badger/E. obesa Wright/E. obesa
32 A Y		Harris/T. barbatum		45 B B	Buckner/E. lambii	Flechig/E. esculenta
32 B G	Parr/F. albidens		Parr/S. geminum	45 B G	Parr/E. flanaganii	Horak/E. arhylla Miller/E. sp.
32 B Y	Harris/T. bulbosum			45 B Y	Cornett/E. Inermis v. hutt.	De Merritt/E. francoisii De Merritt/E. abdelkuri
33 A G	Parr/A. albissima	Parr/A. filamentosa		45 B Y		
33 A Y	Cornett/A. "Mini" rufesc.	Quijada/A. retusa	P Badger/C. namaqu.	46 A G	Paradowski/E. knuthii	
33 B B	Southwell /A. quivaria			46 B B	Southwell/E. persistens	
34 A B	Buckner/K. rhombipilosa			46 B Y	Henderson/E. stellata	De Merritt/E. stellata L Badger/E. groenewa.
34 A G		Miller/K. sp.		47 A G		
34 B Y	Williams/K. 'Fang'	Harris/K. behav. 'Minima'	Harris/K. to. 'Cho. Soldier'	47 A Y	Quijada/M. ritchei	Miller/M. reflexum
35 A B	Hulett/Tylecodon Bucholziana			47 B G	Parr/M. ritchei	Schell/J. berlandieri Knapik/M. ritchei
35 A G	Bunch/A. filicaulis v. marlothii			47 B Y	Henderson/J. podagrica	Miller/M. ellenbeckii
35 B B	Peck/C. sp			48 A B	Buckner/S. mwereoisensis	
35 B G	Parr/A. phillipsiae			48 A Y	Schell/S. acaulas	Griffin/S. articulatus fm. globosa
36 A B	Hulett/C. hottenlotta			48 A Y		Griffin/S. haworthii
36 A G	Parr/C. pubescens	Parr/C. 'Morgans Beauty'		48 B G	Parr/S. scaposus v. caulescens	Bunch/S. scaposus
36 A Y	Schell/C. rap. 'Peter Pan' Varieg.			48 B G	Bunch/S. haworthii	Parr/S. haworthii
36 B G	Bunch/C. orbicularis	Parr/C. argentea 'Hobbit'		49 B B	Lime/P. fruticomun	Lime/S. vanderiteae Lime/S. peniculinum
36 B G	Parr/C. marchandii	Bunch/C. ora. 'Skinny Fingers'		49 B G	Horak/P. paniculata	
37 A B		Buckner/A. arboneum Crest	Buckner/C. albuvesce.	50 A Y	Knapik/T. cactiforme	Byer/P. caput-viperae
37 A G	Birt/S. clavatum	Parr/S. 'Raspberry Delight'	Innis/S. dasy. 'Ritanun'	50 B Y	Quijada/L. beukmanii	
37 A Y	Harris/A. tortuossum	L Badger/A. smithii	Schell/S. acre	51 B G		
37 A Y			Williams/M. muralis	51 B Y	Quijada/C. fusca	Williams/C. fusca Heckathorn/C. dic Var. Henderson/H. car. M.
37 B B		Hulett/S. scavdens		52 A Y	Williams/F. andalgalensis	Wright/F. edulis
37 B G	Parr/A. sedifolium	Osgrove/S. fectorum	Bunch/Villadia sp.	52 B Y	Henderson/F. edulis	Williams/F. edulis Williams/F. cylindrica
37 B G			Parr/S. furfuraceum	53 A B		Buckner/P. succulentum
38 A B		Buckner/P. hoollerii		53 B B	Flehsig/P. rosulatum	Lime/P. lealii v. saundersii Flechsig/P. succule.
38 A Y		Harris/P. longifolium		53 B B		Peck/P. lamerii
38 B G		Innis/G. 'Para Gray Ensis'		53 B G	Parr/P. baronii v. windsorii	
39 A B	Hulett/E. cante			53 B Y	Byer/P. rosulatum v. graci.	De Merritt/P. rosulatum De Merritt/P. rutenb.
39 A G	Parr/E. setosa			54 A Y	Williams/C. seitziana	
39 A Y	Henderson/E. 'Edna Spencer'	Harris/E. mirima		54 B B	Buckner/C. ecirhrosa	
39 B B	Southwell/E. subrigida	Southwell/E. agavo. 'Ebony'	Buckner /E. 'Alta May'	54 B Y	Williams/C. juttiae	L Badger/C. juttiae
39 B G	Parr/E. setosa x E. pulvinata	Osgrove/E. agavoides		55 B B	Lime/Ficus sp.	Buckner/Ficus pal. v. brand.
39 B Y	Henderson/E. subsessilis	Henderson/E. 'Black Prin.'	Henderson/E. 'Red Tr.'	56 B Y	De Merritt/F. diguetii	Demerrit/F. mcdouglii
39 B Y	Henderson/E. 'Dick Wri.'	Henderson/E. 'Morn. Light'	Henderson/E. gib. Hyb.	57 A G		
40 A G	Parrott/D. 'Gnoma'			58 A Y		Parr/I. tenuisecta
40 B B			Hulett/D. pulverulenta	58 A Y		L Badger/B. microphylla
40 B G	Parrott/D. verityi			58 B B	Buckner/B. multijuglans	Lime/O. decaryi Lime/B. ellipticum
				58 B B		Lime/C. monfredurs

58 B Y	L Badger/U. decaryii		L Badger/O. decaryii	67 B B	Buckner/Cussonia spicata "Twisto"		
59 A Y		De Merritt/C. eccirrhosa	De Merritt/Mo. rostrata	67 B G	Parr/Peperomia ferreyrae		
59 B Y	Byer/Pyrenaca. malvifolia			67 B Y	Williams/Eulophia petersii	Cornett/Oxalis gigantea	
60 A B	Avery/A. erinacea		Hulett/A. suzannae	68 A B	Hulett/H. cymbiformis	Flechsigs/E. Hybrid Crest	Hulett/A. taliuleafer.
60 A G	Parr/A. boweia			68 A G	Parrott/G. gracilis Varieg.	Parrott/E. obesa Monstrose	Parrott/Sedum sp Vari.
60 A Y	Griffin/A. 'Dental Work'		Griffin/A. leata	68 A Y	Harris/G. paraquay. Crest	Frost/E. lactea Vari. Crest	
60 B B	Southwell/L. prostrata Variegata		Flechsigs/A. dorotheae	68 A Y	Frost/E. lactea Variegata Crest		
60 B G	Parr/A. cooperi	Parr/A. ramoissima	Paradowski/A. br. Vare.	68 B B	Southwell/A. parryi Vari.	Peck/E. horrida Crest	
60 B Y	Griffin/A. taurii	Griffin/A. cameronii	Griffin/A. vaotsanda	68 B G	Paradowski/E. Ingens M.	Miller/E. Lactea Crest	Parrott/S. inc. Crest
60 B Y			Griffin/A. divaricata		DIVISION III - COLLECTIONS		
60 B Y			Henderson/A. erinacea	75 G	Innis/Cactus Collection		
60 B Y			Griffin/A. inya. v. kimb.	76 B	Kraatz/Euphorbia Collection		
61 A B	Williams/G. balesiana	Hulett/G. glomerata		76 G	Innis/Aeonium Collection		
61 A G	Parrott/G. glomerata			76 Y	Parr/Euphorbia Collection	Stern/Fockea Edulis Colle.	De Merritt/Lithops Col.
61 A Y	Griffin/G. ellaphiae			77 B	Buckner/L. karasu forms	Hulett/Sedum Spathifolium	
61 B G	Miller/G. nitida v. batesonii	Parr/G. liliputana		77 G	Osgrove/Dish Garden	Innis/Opuntia Dish Garden	Parr/Dish Garden
61 B Y	De Merritt/G. armstrongii	Harris/G. armstrongii Hybrid		77 Y	Schell/S. dasyp. 'Rifanum'	Schell/S. furfuraceum	Schell/Echeveria sp.
62 A B	Southwell/H. 'Schuldtiana'	Williams/H. mag v. splendus	Williams/H. mag. v. atr.		DIVISION IV - SPECIALITIES		
62 A B		Williams/H. 'Korizato'	Williams/H. bayerii	78 B	Buckner/Euphorbia miseria		
62 A G	Birt/H. manifica v. splendens			78 G	Osgrove/Dudleya brittonii		
62 A Y	Knapik/H. 'Dave Grigsby'	Griffin/H. margi. x viscosa	Griffin/H. sord. Hybrid	79 B	?/Jatrophia cuneata		
62 B G	Osgrove/H. attenuada	Stiko/H. retusa		79 Y	Henderson/D. brittonii	Quijada/D. brittonii	L Badger/P. discolor
62 B G		Parr/H. pallida		80 B	Lime/Fouquieria Fasciculata	Hulett/M. magallanii	
62 B Y	Griffin/H. truncata Hybrid			80 G	Osgrove/Mexican Plant M. gemnispina		
63 A G	O'Daniel/S. sp 'Ga'	O'Daniel/S. sp. Bally 12681	O'Daniel/S. aff. conc.	80 Y	Quijada/M. meyranii	Cornett/F. mcdougalli	L Badger/B. fagaroides
63 A G	Parr/S. schweinfurthii			81 B	Lime/Ficus palmeri		
63 A Y	Quijada/S. pinguicula			81 Y	L Badger/E. milii Hybrid Graft		
63 B B		Noel/S. suffuticosa - Sprial fm.		82 B	Hulett/Melocactus lonispina		
63 B G	Paradowski/S. schwein.	O'Daniel/S. philippsiae	Wade/S. pinguicula	82 Y	P Badger/Pachypodium lamerii Cristata		
63 B Y	Quijada/S. 'Baseball Bat'	Quijada/S. philippsiae	Schell/S. singularis	83 B	Hulett/Opuntia microdasy	Hulett/Mam. glarrii	Buckner/A. filiformis
64 B B	Southwell/A. toure. 'Bella'	Flechsigs/A. arizonica	Buckner/Y. sp	83 Y	P Badger/A. Pumila	L Badger/E. milii 'Le. Drop'	Wright/S. tropilofolius
64 B G	Miller/A. schidigera	Parr/A. 'Rosa Gorda'	Parr/A. filifera		DIVISION V - DISPLAYS		
64 B G			Parr/A. ocahui	85 B	Lime/Operculicaria decaryi		
64 B Y	Williams/A. per. v. truncata	Williams/A. patonii		85 B	Buckner/Ficus thoingingii		
65 A Y				86 Y	P Badger/Exhibit		
66 B B	Buckner/D. brevifolia		Williams/B. recurvata	86 Y	P Badger/Exhibit		
66 B Y	Quijada/D. brevifolia		Williams/D. 'Blackie'	86 B	Lime/Exhibit		
67 A B	Avery/P. prostratus				DIVISION VI - ARTWORK - NON COMPETITIVE		
67 A G	Parr/Coleus sp			87	Betzler/Byer/De Merritt/Frost		
67 A Y	Cornett/Jalapa mirabilis						

Trophy Winners for the Spring 2000 Show

Best Succulent Bonsai	Joyce & Michael Buckner	Ficus thoingingii	Best Novice	Phil Bunch	Senecio haworthii
Best Baja Plant	Rudy Lime	Jatropha cuneata	Best Agave	Rowena & Steve Southwell	Agave toumeyana v. bella
Best Graft	Dick & Lupe Hulett	Aztekium ritteri	Best Aloe	Kelly Griffin	Aloe laurii
Best Mexican Plant in Show	Joe Quijada	Mammillaria meyranii	Best Echeveria	Marilyn Henderson	Echeveria 'Dick Wright'
Best Plant Grown from Seed	Dick & Lupe Hulett	Melocactus longispina	Best Euphorbia	Marilyn Henderson	Euphorbia stellata
Best S. D. County Succulent	Michael Buckner	Euphorbia miseria	Best Mesemb	Phil Bunch	Oscularia deltoidea
Best Miniature	Pam Badger	Agave pumila	Best Pelagrorium or Sarocaulon	Rudy Lime	Pelargonium fruiticosa
Best Novice Cactus	Terry & Collette Parr	Mammillaria geminispina	Best Educational Display	Pam Badger	Display
Best Cactus	Joe Quijada	Mammillaria matudae	Best Exhibit	Pam Badger	Display
Best Epiphyte Cactus	Terry & Collette Parr	Rhipsalis lindbergiana	Most Artistic Display	Rudy Lime	Display
Best Mammillaria	Steve & Rowena Southwell	Mammillaria lenta	High Points 50 or Fewer Entries	Dick & Lupe Hulett	Highest Points, less than 50 plants
Best Opuntia	Dick & Lupe Hulett	Opuntia piccardii	Sweepstakes Trophy	Dick & Lupe Hulett	Highest Points
Best Sansevieria	Jean O'Daniel	Sansevieria sp. 'nova'	Judge's Choice	Michael & Joyce Buckner	Euphorbia lambii
People's Choice	Joe Quijada	Mammillaria meyranii	Judge's Choice	Michael & Joyce Buckner	Bursera multijugans
Best Pachycaul or Caudiciform	Dorothy Byer	Pachypodium rosalatum var. gracilis	Judge's Choice	Phyllis Flechsigs	Cleistocactus stonsii Crested
Best Cactus	Joe Quijada	Mammillaria matudae	Judge's Choice	Marilyn Henderson	Echeveria Black Prince
Best Succulent	Marilyn Henderson	Fockea edulis			

Oaxacan Mammillarias

by Tom Birt

This article is only a checklist of the Mammillarias known to be found in the Mexican State of Oaxaca. Since I have never been there, I can only restate the findings of others. The names used are taken from John Pilbeam's latest book on the genus. The species names:

albilanata subsp. *oaxacana*
beneckeii
carnea crucigera subsp. *crucigera*
subsp. *tlalocii*
deherdtiana subsp. *deherdtiana*
subsp. *dodsonii*
discolor
dixanthocentron
duoformis
flavicentra
haageana subsp. *haageana*
subsp. *conspicua*
subsp. *schmollii halbingeri*
hernandezii
huitzilopochtli subsp. *huitzilopochtli*
subsp. *niduliformis*
karwinskiana subsp. *karwinskiana*
subsp. *collinsii*
subsp. *nejapensis*
kraehenbuehlii
mystax
oteroi
pectinifera?
polyedra
rekoii subsp. *rekoii*
subsp. *aureispina*
subsp. *leptacantha*
solisioides
sphacelata subsp. *sphacelata*
subsp. *viperina*
supertexta
tepexicensis
tonalensis
uncinata
voburnensis subsp. *voburnensis*
zephyranthoides



Groupings according to David Hunt (1987):

Subgenus *Oehmea*: *beneckeii*
Subgenus *Mammillaria*
Section *Hydrochylus*
Series *Longiflorae*
Napina Group: *deherdtiana*, *hernandezii*
Tepexicensis Group: *tepexicensis*
Series *Ancistracanthae*
Zephyranthoides Group: *zephyranthoides*
Series *Stylotaelae*
Oteroi Group: *oteroi*
Series *Lasiacanthae*
Pectinifera Group: *pectinifera?*, *solisioides*
Series *Sphacelatae*
Sphacelata Group: *kraehenbuehlii*, *sphacelata*, *tonalensis*
Section *Subhydrochylus*
Series *Heterochlorae*
Discolor Group: *discolor*
Series *Polyacanthae*
Nunezii Group: *duoformis*, *rekoii*
Series *Supertextae*
Supertexta Group: *albilanata*, *crucigera*, *dixanthocentron*, *flavicentra*, *haageana*, *halbingeri*, *huitzilopochtli*, *supertexta*
Section *Mammillaria*
Series *Mammillaria*
Heyderi Group: *uncinata*
Series *Polyedrae*
Karwinskiana Group: *karwinskiana*, *voburnensis*
Polyedra Group: *carnea*, *polyedra*
Mystax Group: *mysta*

Mammillaria pectinifera



Mammillaria pectinifera has not been found in Oaxaca in about 100 yrs. It has been found in neighboring Puebla. In 1997, *M. crucigera* v. *grandinosa* was described by Linden, Rogozinski & F. Wolf. It lacks central spines and branches non-dichotomously. Cultivation experiences outdoors (no shelter) in northeastern La Jolla: *M. albilanata* - WM4570 (listed by Mesa Gardens as aff.

crucigera, but Woody told me that was incorrect, although also listed that way by Pilbeam). I have grown from seed for 5 yrs. Listed by Mesa Gardens "yellow flowers". Mine have not bloomed yet, but seem healthy although slow. Full sun. *M. crucigera* subsp. *crucigera* - I have 2 purchased 11 years ago from Betty Athy that have grown very slowly. They are still in the original 2.5" pots. I have one clone from Andersons nursery that branches non-dichotomously, thus far. One robust form from Ed Nolan has larger flowers than the rest. They all seem to like about 10% shading.

M. crucigera subsp. *tlalocii* - FO229 grown from seed for 5 yrs. Only one has survived the ravages of the local mollusks. It grows in small spurts. The pair that I bought from the Southwells are growing much faster than the first subspecies. Their flowers seem to be apricot-pink on the shady side, and dark pink on the sunny side of the stem. They were purchased at our '99 June sale. Full sun.

M. dixanthocentron - L068 was purchased from Mesa Garden as *M. albilanata*. Thus far my 5-year-old seedlings are under 1" in diameter. Only one (double headed) is developing noticeable central spines which are the best part about this species. They are growing at the same rate as the WM4570 (above). 10% shade.

M. haageana subsp. *conspicua* - Only one of the ML380 seedlings have survived the almost nightly mollusk raids, but what I lack in quantity is made up for in speedy growth. Thus far no blooms, but I expect them by next spring. Full sun.

M. hernandezii - Purchased from Esther Avery less than a year ago, it has already had 2 rounds of blooms. The 1" slugs like their flower buds better than anything else I grow, one of the hazards of growing cacti without central spines. Full sun.

M. kraehenbuehlii - Seed started from the '98 CSSA offering are about .5" in dia. A plant purchased from Woody in '98 (WM4450) blooms (1 to 2 flowers) sporadically. 40% shade.

M. rekoii subsp.

aureispina -
Seedlings of L1055 started in '95 bloomed this spring. Seems to tolerate full sun exposure despite the low spine density.

M. rekoii subsp. *leptacantha* - RSVP exhibited a beautiful cluster at our 2000 Winter Show and Sale with glowing yellow spines (see p.246 of Pilbeam's new book), and I purchased one from them then. In this coastal climate, all but the newest spines have faded. It did bloom nicely this spring. Full sun.



Mammillaria pectinifera

M. solisioides - One seedling I started in '95 (FO203) started to bloom last October, but the buds fizzled. Two plants I bought from Woody (June '99), bloomed last fall, and this spring. The lower spines have now turned gray. Full sun.

Sansevierias

By Michele Heckathorn

At one time or another we have all had a *Sansevieria* as a houseplant. They are tough as nails, oblivious to watering, light, food, or general neglect. But did you know that all the members originated from Africa and southern Asia and have been used by native people for making rope?

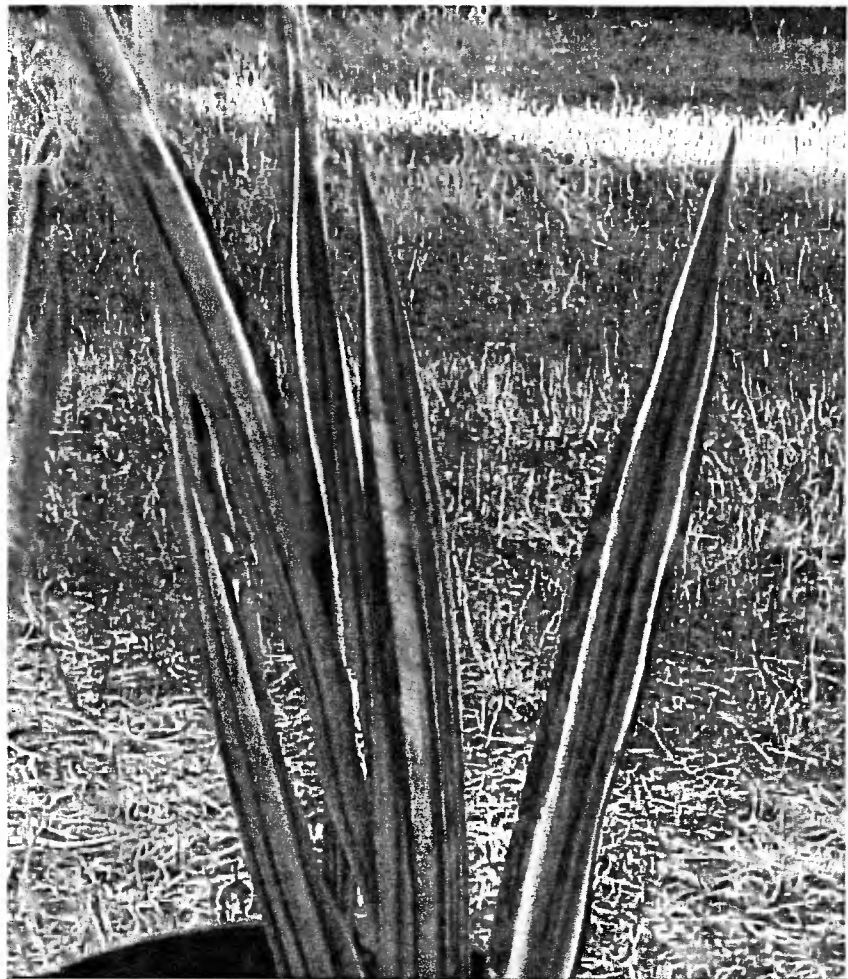
The genus *Sansevieria*, depending on the source, belongs in either the Liliaceae or a closely related family, the Agavaceae. They are characterized by short, thick rhizomes and sword shaped or cylindrical leaves. All the species can be propagated from leaf cuttings or division. However, not all leaf cuttings will produce the cultivar from which it came. Occasionally, it will revert back to a parent species. Even though, these plants make elegant and sculptural statements, some have a commercial use also. Two species in particular, *Sansevieria hyacinthoides* from South Africa and *Sansevieria roxburghiana* from India are grown for fibers in their leaves called 'bowstring hemp'. These fibers are used to make fabrics and rope.

Some other varieties and species are also unusual and beautiful in their own way. One is *Sansevieria kirkii* var. *pulchra*, which has chocolate brown markings and pale pink in between, with beautiful wavy margins. Another is *Sansevieria arborescens* from Kenya, which grows like a tree up to one meter high in a stacking fashion. *Sansevieria masoniana* is a species with large beautiful thick leaves with a rhizome like a sideways tree trunk. Lastly, there is *Sansevieria raffilii* var. *glauca* from Africa. It is a wonderful plant with pale green leaves with dark green edges.

The most commonly grown of the *Sansevierias* is the *S. trifasciata* and some of its cultivars. Some of the more unusual ones include *S. trifasciata* 'Laurentii Slipped Stripes', in which the yellow stripes do not

stay at the margin, but appear in different spots on different locations on the leaf. Another is *S. trifasciata* 'Bantel's Sensation' which has pure white lengthwise stripes. The dwarfs, derived from *Sansevieria trifasciata* 'Hahnii', have some interesting cultivars also. One is *S. trifasciata* 'Hahnii Streaker', which has the normal green color, but looks like it has been whitewashed with stripes lengthwise down the leaves. This particular cultivar is not very stable, usually producing offsets that do not resemble the parent. *S. trifasciata* 'Loop's Pride', which has very succulent leaves, dark green on top with crossbanded edges.

Even though these interesting plants crack our pots when crowded, take up too much space, it is hard to get bored with them. There are too many out there to choose from: giant to miniature, normal or variegated, flat or round. And at the worst, if you do get bored, you can always make yourself some rope!



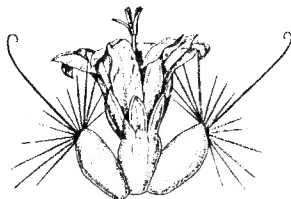
Sansevieria 'Bantel's Sensation'

Issue Highlights

- Speaker & Cover Information ... 2
- Presidents Message & Request for help ... 3
- Calendar & For Your Information ... 4
- A Big Thank You for Show Helpers ... 5
- Show and Trophy Winners ... 6-8
- Sansevieria & Mammillaria Articles ... 9-11

The San Diego Cactus & Succulent Society, Inc.
 P.O. Box 33181, San Diego, CA 92163-3181

NONPROFIT ORG.
 U.S. POSTAGE
PAID
 SAN DIEGO, CA
 PERMIT NO. 737



ESPINAS Y FLORES

Editor: Tom Knapik - 619 462-1805
 Associate Editor: Joey Betzler - 858 569-8510
 Mail to: 4669 71 St., La Mesa, CA 91941
 fax 858 569-8510 or e-mail eyf2000@aol.com

SAN DIEGO CACTUS AND SUCCULENT SOCIETY INC

2000 Executive Board Members

OFFICERS

President - Tom De Merritt
 858-270-5544
 Vice Pres.- George Flaisted
 619-583-9551
 Secretary - Laura De Merritt
 858-270-5544
 Treasurer - Herb Stern
 619-223-9134

EX OFFICIO

Immediate Past President
 Tom Knapik
 619-462-1805

DIRECTORS

Pam Badger
 619-589-1223
 Ed DeLollis
 760-945-7892
 Joe Kraatz
 760 758-7042
 Spencer Maze
 858-454-1870
 Terry Parr
 619-460-9111
 Kelly Parrott
 619-696-0376

SDCSS Volunteers on Standing Committees and Sub-Committees

Conservation:

Joey Betzler and Kelly Griffin

Education and Exhibits:

Brag Table - Shirley Berry
 and Kay Quijada

Plants of the Month - Jeff Harris
 and Joyce Buckner

Summer Show - Tom Knapik, J.
 Betzler and Kay Quijada

Winter Show - Ed DeLollis

History: vacant

Liaison:

Balboa Park Desert Garden -
 Susan Hopkins

CSSA Affiliate Rep. -
 Kelly Griffin

Quail Botanic Gardens -
 Phylis Flechsig

San Diego Botanic Garden
 Foundation - George Flaisted

San Diego Floral Association -
 Elizabeth Glover

S. D. Wild Animal Park's Baja and
 Succulent Collections - J. Betzler

Library:

Tom Birt and Cynthia Santorini

Membership:

Joey Betzler (858-569-8510), Collette
 Parr

Mailing:

Pam Badger and Jeff Harris

Plant and Seed Exchange:

Plants - Michele Heckathorn and Sara
 Schell

Seeds - Kelly Griffin

Plant Sales and Supplies:

Annual Sales - Tom Birt

Auction and Holiday Plants - L. Badger,
 and Tom DeMerritt

Benefit Table - Kay Quijada and L. Badger

Monthly Plant Sales - Jeff Harris and
 Greg Wade

Monthly Supply Sales - George and Jerry
 Flaisted

Publicity: Tom DeMerritt and Stan Yalof

Programs: Kelly Griffin (760-942-4866)

Reception:

Ethel Standish and Elizabeth Glover

Regalement:

Monthly - Lee Badger, Rudy Lime and
 Stefy Mangold

Picnic - Laura and Tom DeMerritt

The SAN DIEGO CACTUS AND SUCCULENT SOCIETY, INC. is open to all persons interested in growing cacti and other succulent plants. Meetings are held the second Saturday of each month (except June, Sept. and Dec.) at 1:00 PM in room 101, Casa del Prado, Balboa Park. Executive Board meetings are open to all members; call any officer or director for the time and location. Annual dues are \$15.00 per single member per year, \$5.00 for each additional (associate) member within the same household. Single copies of *Espinas y Flores* are \$2.00 per copy sent within the USA; foreign subscriptions are \$30.00. Affiliated with the CACTUS AND SUCCULENT SOCIETY OF AMERICA, INC. SDCSS Web Page available soon please stay tuned for address.