

MAMMILLARIA THORNERI

# Espinas y Flores

BULLETIN OF THE SAN DIEGO CACTUS AND SUCCULENT SOCIETY  
 Affiliate of the Cactus and Succulent Society of America, Inc.

Vol. XIV, No. 12.

December, 1979

## December Meeting

Saturday, December 8, 1979  
 1:30 pm

Casa del Prado, Room 101, Balboa Park

## *Annual Christmas Party*

There will be no formal program this month. Instead we will have our annual holiday get-together, complete with a gift plant for each member. In addition, the election of Board members and a new Christmas Plant Exchange will be held (see inside for more details). Refreshments will be provided. Usher in the holiday season by visiting with old friends and meeting new ones. There will be no Plant Sales, Brag Table, or V.I.P. Table. The cactus and succulent of the month are "your favorites."

---

<u>In This Issue</u> . . . . .	<u>Page</u>
1980 Calendar . . . . .	2
Pests of Succulent Plants: Part X — R. Monroe . . . . .	3
Membership Renewals . . . . .	4
Member Interviews: Nellie Kennett — M. Monroe . . . . .	5
What Ever Happened to ...? — R. Latimer . . . . .	6
Letter to the Editor — E. Viertel . . . . .	7
December Plant Exchange . . . . .	8
Board of Directors Election . . . . .	9
New Members . . . . .	10
Green Thumb Shows . . . . .	10
Notes & News . . . . .	10

1980 Calendar

<u>Meeting Date</u>	<u>Succulent of the Month</u>	<u>Cactus of the Month</u>
January	<i>Sempervivum, Aeonium, Monanthes, &amp; Greenovia</i>	<i>Cylindropuntia</i>
February	<i>Agave</i>	<i>Blossfeldia</i>
March	<i>Gasteria</i>	<i>Ferocactus</i>
April	<i>Echeveria &amp; Pachyphytum</i>	<i>Cleistocactus</i>
May	<i>Pachypodium &amp; Adenium</i>	<i>Arrojadoa</i>
June	<i>Cotyledon, Tylecodon, &amp; Adromischus</i>	<i>Echinocactus</i>
July		PICNIC
August	<i>Asclepiads III: Raphionacme, Fockea, Dischidia, Hoya, Folotsia, Sarcostemma, &amp; Cynanchum</i>	<i>Tephrocactus</i>
September	<i>Crassula</i>	<i>Eulychnia</i>
October	<i>Euphorbia</i>	<i>Ariocarpus</i>
November	<i>Fouquieria &amp; "trees" (ie. Bombax, Bursera, Pachycormus, Adansonia, etc.)</i>	<i>Sulcorebutia</i>
December	Your favorite succulent	Your favorite cactus

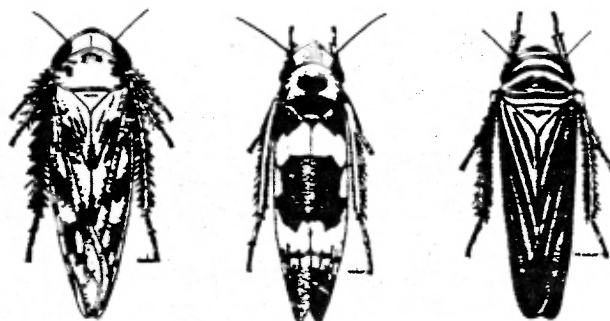
## Pests of Succulent Plants

### Part X. Miscellaneous insects (grasshoppers and leafhoppers)

Dr. Ronald E. Monroe

Although unrelated taxonomically, "hoppers" are often a problem to growers of succulent plants and they are considered here in a miscellaneous category.

Systematics — Leafhoppers (Cicadellidae: Homoptera) can be a yearly pest of numerous species of succulents. In Southern California the most common, sustained pest is Homolodisca lacerta which is called a "sharpshooter" by many. Leafhoppers are elongate insects about 1/4 inch in length and of variable colors, with some species very beautifully marked. They are alacritous hoppers and both the adults and immature forms have a habit of running sidewise (Little, 1972). Often associated with this pest is a dry, whitish residue covering the plant area on which it was feeding, (a non-sticky honeydew excreted by the insect).



Leafhoppers

Grasshoppers of many species (Orthoptera: Acrididae) are occasional pests of succulent plants. In Southern California they are particularly bad following wet winters. Common pest species are the red-legged grasshopper (Melanoplus femur-rubrum, the Rocky Mountain grasshopper (M. mexicanus), the differential grasshopper (M. differentialis) and the clear-winged grasshopper (Camnula pellucida); however, numerous other species may be pests in different locations of the country from time to time (Metcalf et al., 1951).

Plant damage — Leafhoppers suck the juices from many species of succulents; however, they more commonly feed on Epiphyllum sp., Aporocactus sp., Agave sp. (flower stalks), Echinopsis sp. and many species of ceroid cacti. The actual feeding by these hoppers does not appear to adversely affect the plants; however, their oviposition habits do injure the leafy stems of epiphyllums and reduce the show qualities of such plants (the hoppers insert their ovipositer just beneath the leaf cuticle and eggs are deposited in two rows about 1/4 inch long and this resulting egg mass has a slight curve). After the eggs hatch, the egg mass area becomes dry and brittle and unsightly. Grasshoppers have efficient chewing mouthparts and they very quickly devour stems, leaves or flowers and fruits of numerous species of succulents, inflicting severe, lasting damage.

Biology — Grasshoppers, as a rule, have but one generation per year. The females oviposit about 100 eggs in the soil in packet-like masses 1/2 to 2 inches beneath the surface of the soil. These eggs usually hatch over winter and the

young grasshoppers hatch the following spring. The immatures grow steadily all summer and after several moults they become mature, winged adults in August or September. Leafhoppers may have several generations a year, some passing the winter in the egg stage while others pass it as mature adults. The eggs hatch into wingless, active larvae which suck the plant sap and sometimes inject a substance which is distinctly poisonous to plant tissue (some species are notorious for vectoring plant diseases; however, this trait is not known in succulent plants). The young larvae grow quickly moulting their skins several times until they metamorphos to adults.

Control — Grasshoppers can severely damage a plant but they can be effectively controlled by "hand killing" in most cases. However, any modern garden spray (malathion, Sevin, Cygon -2E, etc.) will control these insects easily. Leafhoppers are usually not serious enough of a problem to warrent action via insecticide sprays. However, should one be so predisposed, Cygon -2E will control this insect pest for approximately one week.

#### References cited

Little, V.A. 1972. General and Applied Entomology. Harper and Row, Publishers, Inc., New York. 527 pp.

Metcalf, C.L., W.P. Flint and P.L. Metcalf. 1951. Destructive and Useful Insects, Their Habits and Control. McGraw-Hill Book Co., Inc., New York. 1071 pp.



#### MEMBERSHIP RENEWALS

If you haven't already done so, now is the time to renew your membership for 1980. As reported in the October issue of *Espinas y Flores*, the cost of a single or family membership has been raised to \$7.00 for 1980. In order to avoid mass monetary confusion, the treasurer will only be accepting dues at the December meeting in the following manner: place your check or money (\$7.00), along with your name, address, and phone number, in a sealed envelope and give to the treasurer. Or you may mail your payment — with your name, address, and phone number to:

Joan Johnson  
3560 Lake Garden Drive  
Fallbrook, CA 92028

Dues not received by January 20, 1980 will be considered delinquent and membership privileges expired. Those individuals with library fines of \$1.00 or more will be required to pay that added amount with their membership dues.

Member Interviews: Nellie Kennett

by

Marcia Monroe

Nellie is a native San Diegan who lived with her grandmother in Poway when that city had only a post office, general store and automotive garage, but she has lived in much of the country from the San Joaquin Valley, Georgia Hills and back to San Diego, California, again. She is married to Harold Kennett who has retired from the United States Navy and the Navy Federal Service. They have five children, one boy and four girls, ranging in age from seventeen to thirty-three.

She is a member of the Cactus and Succulent Society of America including the Affiliate Society of San Diego and Nellie has been a member of our Club since 1964 when Cleovis Hardin was president. At that time she was in charge of the kitchen.

Nellie started collecting cacti and succulents in the mid-sixties at the Farmer's Market, but she doesn't hesitate to jump into the car and visit one of her favorite nurseries. Nellie was on that ill fated caravan trip when the San Diego Cactus and Succulent Society members drove their cars down near Ensenada in Baja California, and Warren Buckner had all those flat tires, but they managed to find replacement tires and still do some excellent collecting. Since 1964 Nellie has joined several round robins. These are the asclepiad, rebutia, and echinopsis/lobivia robins. Presently she is a member of the Hoya Society International robin.

Gymnocalyciums were Nellie's first interest but later she took a liking to rebutias, sulcorebutias and echinopsis/lobivia (paramount hybrids). Succulents are her main interest now especially hoyas and ceropegias but she also likes asclepiads and the euphorbia, crown of thorns. She has shown many of her plants at the San Diego Cactus and Succulent Annual Show winning numerous ribbons for such plants as the monstrose forms of Euphorbia flanagani and Notocactus scopa grafted crest.

She uses one of nature's oldest methods to protect her plants by placing them under a deciduous tree and this works fairly well. Too, she has an eight by eight greenhouse.

Recommending a loose potting mix Nellie treats her plants (new plants and cuttings as well) with a systemic pesticide Cygon 2-e<sup>®</sup>. She dips her plants in a solution of Cygon 2-e<sup>®</sup> and detergent and screen-dries them before sending them to a round robin correspondent.

# WHAT EVER HAPPENED TO...?

by Rick Latimer

The first issue of the Journal of the Cactus and Succulent Society of America is dated July 1929. On the cover of this issue is a picture of a crested Carnegiea gigantea (Saguaro) and G. A. Frick. (Mr. Frick was at that time the business manager for the Journal and the CSSA librarian.) This very picture was recently reprinted on the cover of the May-June 1979 issue of the Journal for its golden anniversary celebration.

The cover story of the third (September 1929) issue by Dr. Grace P. Nickerson is entitled "Coronado's Cactus and Succulent Gardens". The cover picture depicts Mrs. Dent Hayes Roberts' garden (address 1000 Glorietta Blvd.). Another garden featured in this article is that of Mrs. M. B. Palmer (811 Tenth St.). Both houses can be described architecturally as Mexican adobe style. The gardens of course featured cacti, agaves, yuccas, etc. The question that arises is-What is the history of these two gardens, from before then and since until now? Also, does any trace of either house or garden exist today? At the time of the article, the Palmer house was up for sale.

We need not stop here either. While gleaning through the intervening issues, I came across many references to San Diego County cactus and succulent nurseries that I had never heard of. What is their history? Below is a list of those found. I would appreciate it if SDCSS members who know about any of them would share their knowledge with us (maybe even write some articles for Espinass y Flores).

Beecroft Garden, Rt. 2, Box 871, Escondido

Charles L. Cass Nursery, 2229 Erie St., Pacific Beach

Constance Bower's Nursery, 2412 L St., San Diego

R. H. Diehl, R. F. D. # 4, Box 3034, 2376 Bella Vista Way,  
Vista

La Estrella Nursery, 3613 41st St., San Diego

Knickerbocker Nursery (Mrs. Neff Bakkers), Rt. 1, 6065 Bach  
St.-Market St. extension or 6065 Broadway, San Diego

Helen McCabe Cactus Gardens, 6721 Imperial Ave., Rt. 3, San  
Diego

Lessar Nursery, Box 317, 396 Highway 101, Encinitas

(Jack) Morgan Wholesale Nurseries, Box 489, Rt. 1, Vista

John Poindexter Nursery, P. O. Box 391, Carlsbad

E. Roepke, 2474 Market St., San Diego

Soledad Gardens (Faye & Lewis Walmsley), Alta Vista St.,  
Pacific Beach

Seaberg's Gardens, 2585 Jefferson, Carlsbad

Tropical Sea Gardens, 2603 Jefferson, P. O. Box 122, (J. B.  
Johnstone), Carlsbad

Peggy Williams, 1314 Puterbaugh St., San Diego

## LETTER TO THE EDITOR

Dear Editor:

I would like to share some information on the cactus of the Middle East, which I came across in an old issue of *The National Geographic Magazine*, as follows:

### The Friendly Cactus<sup>1</sup>

Across from the town (of Nablus, forty miles north of Jerusalem) the slopes of Ebal ... are ... perennially green with cactus bushes planted among the rock ledges, which are curiously studded with ancient sepulchers, whose open doors from a distance reveal only the darkness within. Some of these tombs were rifled centuries ago; others have come to light within the past few years ... But the modern inhabitants do not pride themselves on this interesting cemetery, as did the peoples of bygone times. To the Arabs of today antique relics are of no import; but they feel justly proud of the cactus or prickly-pear bushes, which present a weird spectacle and cover every available space in this oriental God's Acre. The fame of these bushes reaches as far as the Bosphorus, where the much-prized fruit is a favorite gift among the notables of Constantinople.

The prickly-pear cactus was first introduced into Palestine by the Crusaders; today it is grown throughout the length and breadth of the land, being valuable not only for its fruit, but also as an excellent hedge. The natives, however, do not yet appreciate its great value as forage for cattle. The camels help themselves to it whenever they get a chance, their mouths being so tough that, regardless of the spines, they devour the leaves with unmistakable relish. The Ebal cactus' superiority lies in the extra large size of its fruit, the tenderness of its seeds, and its sweet and luscious flavor, due both to the peculiar soil and to the protection afforded from the cold north winds. The Arabic name for the pear, *sabbir* (patience), seems eminently appropriate to one who has innocently handled the unpeeled fruit and had his hands filled with the microscopic spines, which can be extracted only by painful laboriousness.

I wish to point out that Samaritans were not Jews. They were a distinct sect who lived among the Moslems, and, according to the article, "whose persistent continuation and literal per-

---

<sup>1</sup> from: Whiting, J.D. January, 1920. The last Israelitish blood sacrifice: how the vanishing Samaritans celebrate the Passover on sacred Mount Gerizim. *The National Geographic Magazine* 37(1).

formance of the Passover Sacrifice (of lambs) have attracted the attention of students for more than three centuries." The article chiefly dealt with this ritual, observed in the early part of this century, in the Middle East.

When Palestine was again settled by Jews, native born Palestinian Jews were referred to as *Sabras* because, like the *sabbir* — Ebal — cactus, the story goes, they were tough on the outside and sweet on the inside.

I would welcome knowing more about the cactus of this area. Also, I once had a bottle of delicious cactus brandy from Israel, but, regrettably, as far as I know, it is no longer available here. It was a beautiful pale red, sweet yet astringent.

— Estelle Viertel

~~~~~

#### DECEMBER PLANT EXCHANGE

The December meeting will feature the distribution of our regular gift plants for all members of our club, just as we have done in the past. In addition to this, you may want to participate in a new part of the holiday get-together. At this meeting each member who wishes to will bring in a nice plant in a container, a plant you would be proud to give to a friend. This plant should be labeled with the name of the plant on one side of the tag and your name on the reverse. The plant will be placed on a special table and, during the meeting, Shirley Berry, who has organized this event, will begin the process by selecting the most outstanding plant on the table. The person who brought that plant in will have first choice from the table. After that person makes his/her selection, he/she will call the name of the person who brought in the plant which they (the first person) selected, and the process will continue in this manner, until all the plants have been selected. In this way the persons bringing in the best plants will also have a chance to select from the best plants. Please remember to label your plant. Plants without the donor's name will not be accepted.

Good-sized specimens would be appropriate for this gift table, unless of course, the plant is miniature in nature, then the small size would be fine.

Most of us have plants we could easily spare as gifts for each other, so we thought we would try this addition to our December meeting. We'll certainly find out whether giving is better than receiving. If you don't want to bring a plant, come anyway! You will still receive one from the regular gift table, as your annual gift from the club.



## BOARD OF DIRECTORS ELECTION

Voting will be conducted for all six positions on the Board of Directors at the December meeting. The Board's nominating committee has presented the following slate of candidates for consideration:

Elizabeth Athy  
Shirley Berry, incumbent  
Sandra Buck  
Dr. Ronald Monroe, incumbent  
Martin Mooney, incumbent  
John Pasek, incumbent  
Dr. Leroy Phelps, incumbent  
Frank Thrombley

Each Director serves a two-year term. In as much as there are more candidates than there are positions to be filled, members will be provided with ballots and voting will be held during the first part of the meeting.



### A LETTER FROM THE EDITOR

The last issue of the year seems a most appropriate time to thank all those whose contributions and help were vital to the publication of *Espinas y Flores* in 1979.

In particular, Ron Monroe, Rick Latimer, and Walter Scott, whose monthly contributions were the nucleus around which each issue was built. Marcia Monroe, John Myers, Martin Mooney, Shirley Berry, Perlso Lewis, Audrey Johnson, Warren Buckner, and Estelle Viertel also made substantial contributions. Doris Rake was most helpful in getting me mailing lists and labels during the early going and John Blackmer provided philatelic assistance. The biggest note of thanks goes to my parents, Gerald and Eleanor Dice, who collated, folded, stapled, stamped, and bundled each issue for delivery to the post office.

Regretfully, due to increased pressures from both school and work, I informed the Board of Directors in October that I would be unable to continue as editor in 1980. My year as editor of *Espinas y Flores* has been a challenging, educational and, at times, even a trying experience. But most of all, it was a great deal of fun. I would like to thank the Board of Directors who gave me the opportunity to serve in this capacity and hope that you will all give your new editor the same help and support that I received.

— Jim Dice

## NEW MEMBERS

We welcome this month the following new members:

Mike Morimoto, San Diego  
Phil Helton, San Diego  
Toni Madera, San Diego  
Nell Hackleman, San Diego  
Robert Hufner, El Cajon



## GREEN THUMB SHOWS

The San Diego Wild Animal Park will host the following Green Thumb Shows in the upcoming weeks:

December 8-9 — San Diego Camellia Society



## NOTES & NEWS

Winners of the Bragging Plant competition for November were:

1st: Floyd Gable — *Graptopetalum filiferum*  
2nd: Mike Burkhardt — *Euphorbia groenwaldii*  
3rd: Peg Bryant — *Fenestraria rhopalophylla*

Monthly winners for 1979, listed below, will receive an extra gift plant at the December meeting.

January: Marcia Monroe  
February: Tony D'Attilio  
March: Martin Mooney  
April: Floyd Gable  
May: Martin Mooney  
June: Joan Johnson  
August: Sylvia Kramer  
September: Madelyn Lee  
October: Carl McLeod  
November: Floyd Gable



A reminder that the following members have signed up to provide refreshments at the December meeting:

Sandra Buck, Sophie Loyland, Barbara Johnson, Mildred Anderes, Verna Pasek, Beverly Kirkegaard, Audrey Johnson, Pat Mooney, Wilma Johnson, Veryl Snowhill, Ethel Standish, Patty Buchanan, Ruth Stockton, Nan Kelsch, Marcia Monroe, and Dorothy Manfull.



Doris Rake and Ethel Standish have requested that members please check the plants that they bring in for the Plant Exchange Table for diseases and pests.

---

The November V.I.P. Table featured an impressive display of Euphorbias by Martin Mooney. There will not be a V.I.P. Table at the December meeting. It will resume again in January.

---

Deadline for the January issue is December 19th.

HAPPY HOLIDAYS!

San Diego Cactus & Succulent Society

Officers

President - Tom Hamecher 440-6245  
996 Terrace Crest, El Cajon, Ca. 92020  
1st V. Pres. - Richard Latimer 463-1655  
5990 Lake Murray Blvd., La Mesa, Ca. 92041  
2nd V. Pres. - Carl McLeod 279-2817  
3516 Mt. Everest, San Diego, Ca. 92111  
Recording Secretary - Beverly Kirkegaard 463-2801  
10009 Bonnie Vista, La Mesa, Ca. 92041  
Treasurer - Joan Johnson 728-7317  
3560 Lake Garden Dr., Fallbrook, Ca. 92028  
Corresponding Secretary - Anna Cornett 291-6426  
3905 Ibis St., San Diego, Ca. 92103  
Immediate Past Pres. - H. Warren Buckner 469-1391  
1744 Englewood Dr., Lemon Grove, Ca. 92045

Board of Directors

Shirley Berry, Perlso Lewis, Dr. Ronald Monroe,  
Martin Mooney, John Pasek, Dr. Leroy Phelps

Committees

Activities: H. Warren Buckner  
Audit:  
Conservation: Dr. Ronald Monroe  
Education:  
Cacti - Dr. Ronald Monroe  
Succulents - Richard Latimer and Dr. Leroy Phelps  
Exhibits:  
Bragging Table - Shirley Berry  
V.I.P. (Very Important Plants) Table - Martin Mooney  
Historian: Richard Latimer  
Library: Elizabeth Athy  
Membership: Joan Johnson  
Open House: Floyd Gable  
Plant Exchange Table: Ethel Standish and Doris Rake  
Plants & Supplies Table: Carl McLeod  
Programs: Richard Latimer  
Publication: Jim Dice (ph. 278-0326 or 276-2589)  
Reception: Perlso Lewis and Veryl Snowhill  
Regalement: Nancy Roth  
Representatives:  
Balboa Park Desert Garden -  
Quail Botanical Gardens - Audrey Johnson  
S.D. Botanical Garden Foundation -  
S.D. Floral Association - Verna Pasek

The San Diego Cactus & Succulent Society is open to all persons interested in growing cacti, other succulents, and exotic plants. Meetings are held the second Saturday of each month at 1:30 pm in Room 101, Casa del Prado, Balboa Park. Board of Directors meetings are held after the general meetings. Annual dues are \$7.00 per family. Single copies of *Espinas y Flores* are 60¢.

Jim Dice  
6066 Portobelo Court  
San Diego, CA 92124  
Address Correction Requested