



# Espinas y Flores

The Newsletter of the San Diego Cactus & Succulent Society  
an Affiliate of the Cactus and Succulent Society of America

Volume 50 No 12

December 2015



Aloe 'Christmas Carol' Photographed by Irwin Lightstone

## You're Invited to the SDCSS Holiday Party!

December 12, 2015 10:30 am

More details inside!



Opinions expressed in articles and editorial comments are solely the opinions of the author or the editor and do not necessarily represent the opinion of the SDCSS, the board of Directors, or the organization as a whole. All material submitted to the *Espinas y Flores* for possible publication may be edited in form and content. All material contained in the *Espinas y Flores* may be reprinted by other non-profit organizations unless permission is expressly denied in a note accompanying the article. Please send one copy of the printed material to the editor. Reproduction in whole or part by any other organization without the express consent of the editor is prohibited.



## President's Message

I want to give a big shout of thanks to Irwin Lightstone for his succulent plant photography talk. We really appreciate him putting his life on hold and flying out from Texas to present for us. We are very lucky to have so much knowledge and talent come to town! If you missed out on this, do check out his website at:

<http://www.radiantimagesphotography.net>

Also we got to hear all about Peyote from hometown favorite Tom Knapik. Thanks for the intoxicatingly great discourse Tom!

Well, the holidays are once again upon us! Our Holiday party is the next gathering, on December 12th. We will have food, friends, gift plants and fun. If you have not signed up for this, do so on the website or send Chris Miller a check. It is important that we know how many are coming so that we get the planning right on the food and plants. Please bring a dessert, a plant for exchange (optional) and your smiling self!

Some tips on how it works, if you have signed up and paid, you will receive a gift plant and the Holiday dinner. The gift plants are given out by raffle. You will receive a coupon at the door and when your number is called, you get to select your favorite from the 100's of fantastic "Gift" plants.

Additionally, we have the Plant Exchange Table. You should bring something special that you are willing to set free. Put your name on your plant/item and when someone selects yours, you get the next choice. It is important to note that it does not have necessarily have to be a plant, but it should be something special. The sooner your gift is selected, the better choice you have. It's up to you. PLEASE announce loudly the name on the plant or gift you choose...so that we keep this going during the party.

We still need some help in a couple of areas, but we have a great new Newsletter Editor, Sue Thomas, and Brag Table Coordinators, Tina Zucker and Denise Griffin!

If you think of something you might like to help your club with, let's talk about it...See Chris, Susan, or Wendy, and they will be glad to help direct your talents!

Remember, sign up for the Party, make or bring a dessert (not desert!), and bring a special plant or gift to trade if you want to participate in the Exchange.

See you all on December 12th! ~ Kelly Griffin

## *News from the Gardens at the Safari Park*

We would like to thank Rick Bjorkland and Peter Walkowiak for their donations to the new garden - a beautiful aloe and many euphorbias.

Dee Morgan has joined us in caring for the garden. We are very happy to have her help and knowledge.

Thank you to those who supported the Old World Garden at the Palomar Show and Sale by buying plants. Along these lines, we would love to have more company maintaining the garden. Can you volunteer?

Do you have plants to donate to the garden? Fall is the best time to get them into the ground.

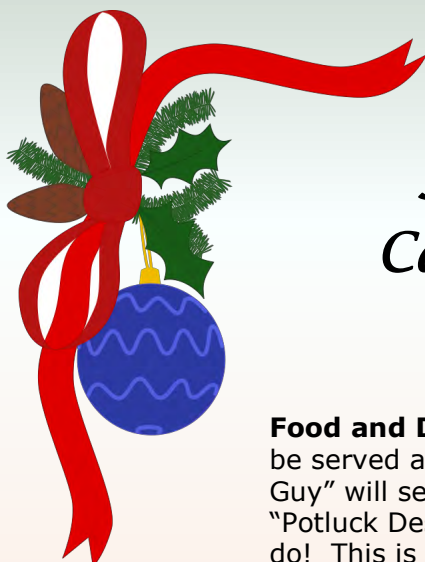
Is there anyone who is willing to propagate and raise plants to sell at future shows for the benefit of the gardens? Please contact May Fong Ho at [mayfongho@yahoo.com](mailto:mayfongho@yahoo.com) or (760) 233-3948.

Already, Aloe dichotomas are in bud and a few aloes have flowers. Adeniums have been in bloom for months. The starry flowers of Stapelia are opening. It looks like flowering may come a little early this year. ~ May Fong Ho



Adeniums, San Diego Safari Park  
Photo by May Fong Ho





# SDCSS Holiday Party

*Saturday, December 12th, 10:30 am  
Casa del Prado, Rm 101, Balboa Park*

**Let's get together to Celebrate the Holidays,  
and enjoy Friends, Food, Fun, and New Plants!**

**Food and Drink:** A delicious and plentiful lunch catered by Ruth Henricks, will be served around noon. There will something for everyone! Herb Stern, "The Wine Guy" will set up the bar. In the spirit of sharing, we will also have the traditional "Potluck Dessert Table." If you have a special dessert you would like to share, please do! This is optional but always a much appreciated finish to our meal.

**Gift Exchange:** Another fun way of sharing is to participate in the Gift Exchange. If you and/or your guests would like to participate (it's optional), bring a nice plant or plant related item (one per person please), and place it on the Gift Exchange Table. Make sure your name is on your plant! A committee will have the tough job of selecting the "Best Plant", which will then be set aside for auction. Whoever brought the Best Plant will have first choice of the remaining plants, and the owner of *that* plant selects a plant, and so on until all of the Gift Exchange items are distributed. As you can imagine, the nicer the plant YOU bring, the sooner you get to choose.

**Gift Plant:** The Society will continue the tradition of giving each *member* who attends this event, a gift plant. These plants will be distributed by lottery, during desserts. When you arrive, be sure to check in at the door to receive your ticket for the drawing. Then take some time to look over the beautiful selection of plants so you will be able to grab your favorite when your number is called. (this is a benefit of membership - no gift plants for guests).

**Auction:** Come prepared to bid on "show quality" plants at the annual Holiday Party Auction!! Up for bid will be bare root plants donated again this year by Western Cactus Growers, along with beautiful specimens donated by our own members. If you have 1-2 "show quality" plants you would like to donate to the auction, please contact Peter or Kelly and let them know.

**Too much fun to miss! We hope to see you at the party. Please let us know you are coming by filling out the RSVP/Signup form below and send to Chris Miller no later than December 8th!**



Cut here

## Holiday Party RSVP and Signup

Name	Member \$20	Non-Member \$25	Amount
	\$	\$	\$
	\$	\$	\$
	\$	\$	\$
Total Amount Enclosed			\$

**Please let us know you are coming!**

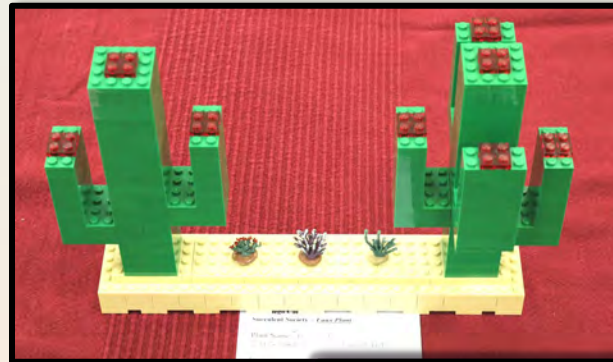
Send this completed form along with a check payable to SDCSS, to  
Chris Miller, 10042 Waynecrest Lane, Santee, CA 92071

**You may also pay via the club website: <http://www.sdcss.net>  
or by emailing Chris: [C.miller@cox.net](mailto:C.miller@cox.net)**



# Faux Plant Brag Table

Judged by  
Pam Badger & Chris Miller



'Lego' Saguaro  
Best Engineered Cactus.  
John Williams



Uebelmannia nospina var. alba  
sp. Menzeli. Most Cuddly #1  
Entered by Candy Garner  
Under Jurgen Menzel



Fam. Aizoacea Lapidarea margarita  
Good for a Rock Concert  
Kelly Griffin



Dustmopia erectum var. softspinus  
(in flower). Most Useful.  
Pat Bryan



Euphorbia tirucalli pencils  
sp. apizii-retrofractus  
Most Useful for Writing the History  
of Faux Plants. Maria Becker



Fabromischus vittatofolium  
ssp. nowea. Best Stripes.  
Melanie Howe



Opuntia plastica. Daya Wilson



Discardboardia eggephantes  
cultivar pearlofolia





**Art-our-e-o Cereus cooleii**  
Most in Need of a Haircut  
Art Cooley



**Spirited Carnegiea gigantea**  
two-buck-chuckiea  
Best Party Cactus and Special Hangover



**Agave libertas cv bartholdi**  
(purchased in New York City as  
an invasive species from France)  
Most Regal. No name



**Opuntia hipster nopel**  
Mid Century Modern  
Michael Martinez



**Copper-tillo (mini fouqaria**  
hybrid) and Saguaro mini-te-a  
(hybrids) Best Use of Heavy  
Metal. Bev Grant



**Pyritea brevicaulis v aureum**  
Most Sparkly - Jurgen Menzel



**Aloe petri-cocacola**  
Most Refreshing  
Kelly and Denise Griffin



**Chamaelobivia fibrosa**  
Most Cuddly #2  
Jerry Garner



**Aloe mathicus, Opuntia plastic,**  
Huernia quadforii,  
Haworthia tangramia  
Best Dish Garden and Use of  
Geometry. David Hartman



**Brita Miller miniagreenhouseurii**  
Exceptional Miniature  
Greenhouse. Brita Miller





**Carnegiea gigantea var. guesttoweloides**  
**Special Driest Cactus**  
**Penny Sommerville**



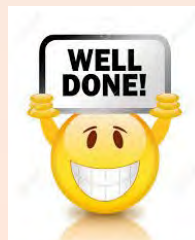
**Epithelantha var. old buttonoides**  
**(Button Cactus)**  
**Most Buttoned Down**  
**Penny Sommerville**



**Pseudo Pseudolithos lithospseudo**  
**Best Use of Pseudoism**  
**Candy Garner**



**Fouquieria splendens viholidayensis**  
**and Opuntia basilaris**  
**Most Twisted. Pam Badger**



**Thank you all  
 for participating,  
 and introducing us  
 to some amazing new  
 species of cactus and  
 succulents!**



**Fenes'ear'ila paperiflora**  
**Noted for Earplug leaves**  
**Best Use for Going to a Rock Concert**  
**Denise Griffin**

**The next SDCSS General Meeting is on January 9th, 1:00 - 4:00 pm, Rm 101,  
 Casa del Prado, Balboa Park  
 (The Holiday Party is in place of the General Meeting in December)**



**A good turnout at November's meeting**



## *Coffee in the Garden at the Millers*



Terracing on the back hillside. Planted with agaves, aloes, yucca, cacti, and more.



Beautiful and varied cactus collection in front yard. Notice the beautiful *Fouquieria columnaris*, back left!



Visitors enjoying the backyard. The swimming pool is gone. Such potential!



Mature cactus - Front Yard

**Directions:**  
**“...Look for the Cactus!”**



Guests perusing the plant & pot sale



## Agave albopilosa

### Part Three of "Mexico - Hunting the Elusive Ones"

By Kelly Griffin



We ventured into Huasteca Canyon not far from Monterrey city in the Mexican state of Nuevo León. It is a vast maze of sharp limestone cliffs jutting up into the sky at odd angles. The dirt roads wind in between, and often in many directions. The cliffs are adorned with herbaceous plants, but of perhaps more interest, many cacti and succulents as well. Most notably for agave nuts like us, *Agave victoria reginae* and *Agave bracteosa*. The bracteosas more on steep north facing slopes but the victorias on many of the cliffs, perhaps numbering in the millions. Interesting how that plant could ever have been considered as a Cites 1 protected plant, but perhaps the people that make these decisions don't go here!

The plant we wanted to see, *Agave albopilosa* is an aptly named wonder that has white hair on the tips of the leaves, surrounding the leaf tip spine. It is quite scarce compared to *Agave victoria reginae* and although it is locally abundant, to my knowledge it only grows on one small cliff area deep in the center of this giant canyon. For that reason it would be the more likely plant for getting the nod for protection but it is not. I would say that given where it grows and how it grows, it will likely be secure in habitat although possibly more difficult to see up close as people tend to covet nice plants and remove ones within reach.

As to how it grows, it prefers the steep vertical limestone cliff faces. I realized after several previous visits to its habitat, that this particular species doesn't die upon reaching maturity but rather tends to dichotomize, and continues growing. This is not unheard of in Agaves, as other species of Agave are known to do this as well (ie. *A. celsii*, now *mitis*, behaves similarly). How I came to this conclusion was interesting in two ways: one, I did not catch on quicker and make better observations, and two, confirmation by seeing a plant that had flowered, still alive and growing after the flower had finished and dropped away. Typically, in a cliff agave habitat there are a percentage of plants that have come to their conclusion and yet are still hanging on - typically 10 to 20 percent dead ones. Not here.....none!

Continued on next page...





**Agave albopilosa: Part Three of "Mexico - Hunting the Elusive Ones" , continued**

When we arrived, we all scrambled up in various directions to see the plants up close, which given the undergrowth below, and steepness, is no small feat. We took photo after photo and I had to remind myself that this was my fifth time to this place and really, how many more photos did I truly need? Tom Knapik and I went one way and Woody Minnich, another. Woody managed to find a plant in flower that was, with some effort, possible to reach and get up close. My first good, not from a distance flower pictures! So great reason to shoot many more pics of this plant! Lesson learned for me many years ago; take other similarly touched, fun, and sharing plant enthusiasts with you. He could have of course, taken pictures of the flower and asked later, "did you see that one?" He did not, and shared his good luck!

It is marvelous plant and not at all difficult to grow, just very slow. I should mention that it has been grown in tissue culture as well as offered as seedlings. I know that several different seeds were sown in tissue culture so that there are multiple clones available, and they are not just one clone. Please do opt for a seedling or tissue cultured plant, and don't buy plants that were obviously field collected (size is indicative since they are very slow growing). Also, field collected ones have the appearance of having been growing on a cliff with leaves skewed to one side. I have seen a couple posted on eBay. Please, let's all help to discourage this practice both by asking the question and not buying ones that were ripped off the cliff.

See you all at the Holiday party. ~ Kelly





**The San Diego Cactus & Succulent Society presents:**

# **Winter Cactus and Succulent Show and Sale**

**Saturday, February 13th, 2016**

**10:00 am - 4:00 pm**

**"Members Only" shopping from 9:00 - 10:00 am**

**Room 101 and Adjacent Patio area**

**Casa del Prado, Balboa Park**

**Strange and Exotic plants from  
around the world.**

**Small plants & Specimen plants**

**Landscape plants for arid gardens.**

**Beautiful hand made pottery**



**For additional information visit: [www.sdcss.net](http://www.sdcss.net)**



### SDCSS MEMBERSHIP APPLICATION / RENEWAL FORM

Dues are \$15.00 per year per individual, and \$5.00 per year for each additional household member. The Newsletter is emailed. Mailed paper copies are available for an additional \$10 a year. Each member has all the rights and benefits of the organization.

Type of Membership (please check one):                      New \_\_\_\_\_      Renewal \_\_\_\_\_  
Annual Membership Dues (E-mail Newsletter):              \$15.00 \_\_\_\_\_  
Add USPS delivery (Paper Newsletter):                      \$10.00 \_\_\_\_\_  
Annual Dues – International (Paper):                          \$30.00 \_\_\_\_\_  
Additional Household Member(s) each:                      \$ 5.00 \_\_\_\_\_  
Amount Enclosed:    \$ \_\_\_\_\_

**Member Information: (Please PRINT to fill in ALL blanks below!)**

Name: \_\_\_\_\_

Address: \_\_\_\_\_

City and State: \_\_\_\_\_ Zip + 4: \_\_\_\_\_

Phone Number: (\_\_\_\_\_) \_\_\_\_\_ Cell/FAX: (\_\_\_\_\_) \_\_\_\_\_

Email Address: \_\_\_\_\_

Additional Household Members: \_\_\_\_\_

Do you wish to receive E-mail notifications of Club events and issues? Yes \_\_\_\_\_ No \_\_\_\_\_

Mail this form or a copy, along with a check or money order in US Funds, payable to SDCSS to:

SDCSS Membership Dept, c/o Paul Maker  
1245 San Pablo Drive, San Marcos, CA 92078

**Coffee in the Garden: Due to unforeseen circumstances, Coffee in the Garden at the Badgers has been canceled for December. They hope to reschedule early next year.**

### Volunteers Needed!!

**Coffee in the Garden Coordinator:** Coordinates and schedules monthly Coffee in the Garden events

**Show Co-Chair:** Help Peter Walkowiak at the Winter and Summer shows

**Webmaster Trainer/Helper:** Helps Paul Maker with the SDCSS website. Learns the process to fill in or take over as a future Webmaster

**Data Coordinator:** We are looking for someone who understands MS Excel, programming and database mgmt.

**Please contact Wendy Goldman or Susan Hopkins**





## San Diego Cactus & Succulent Society

### Executive Board

President: Kelly Griffin  
Vice president: Chris Miller  
Secretary: Jennifer Harris  
Treasurer: Leslie Sheridan

### Directors

Rick Bjorkland  
Jerry Garner  
Wendy Goldman  
Kienan Parr  
Brian Shepherd  
Christine Vargas  
Peter Walkowiak

### Standing Committees & Sub Committees

#### Education, Conservation & Exhibits

Conservation: Herb Stern  
Brag table: Tina Zucker & Denise Griffin  
Plants of the Month: Don Hunt  
Winter Show: Peter Walkowiak  
Summer Show: Peter Walkowiak  
Historian: Terry Parr  
Grants: Jerry Garner  
Library: Don Hunt, Steve & Kathy Harris

#### Sales, Meetings, Supplies, Programs

Annual sales: Chris Miller  
Auction & Holiday Plants: Kelly Griffin  
Monthly Plant Sales: Jim DeForrest/Lynn Elliott  
Monthly Supply Sales: George & Jerry Plaisted  
Benefit Drawing Table: Collette/Kienan/Terry Parr  
Programs: Kelly Griffin  
Reception: Susan Hopkins/Judy Walkowiak  
Monthly Regalement: Cathy Clark  
Picnic Regalement: Chris Miller

### Liaisons

Balboa Park Desert Garden: Susan Hopkins  
CSSA Affiliate Rep: Peter Walkowiak  
SD Botanic Garden: Phyllis Flechsig  
SD Botanic Garden Foundation: George Plaisted  
SD Floral Association: Jeanette Dutton  
SD Zoo Safari Park,  
Baja & Old World Gardens: May Fong

### Membership & Publicity

Membership: Paul & Carol Maker  
Newsletter Editor: Sue Thomas  
Webmaster: Paul Maker  
Publicity: Christine Vargas

### Contact SDCSS

Website: <http://www.sdcss.net>  
Membership: [membership@sdcss.net](mailto:membership@sdcss.net)  
Newsletter: [newsletter@sdcss.net](mailto:newsletter@sdcss.net)



Kelly



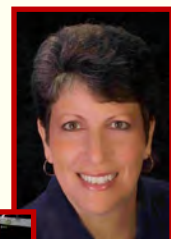
Chris



Jennifer



Leslie



Wendy



Kienan



Rick



Jerry



Peter



Brian



Christine



Aloe dichotoma at San Diego Safari Park  
Photo by Susan LaFreniere