

# Espinas y Flores

Newsletter of the San Diego Cactus and Succulent Society, Inc.

Affiliated with the Cactus and Succulent Society of America

Volume 37, Number 5 & 6, Saturday, May 11, 2002 at 1:00 PM



## Cactus and



# Succulent Show

Casa Del Prado, Balboa Park Room 101

Strange and Exotic Plants  
from the far corners of the World  
gathered together for your  
Viewing Amazement!

Admission  
is Free!

Courtyard Plant Sale  
featuring a selection of choice specimens  
from over twenty growers,  
as well as Handmade Pottery!

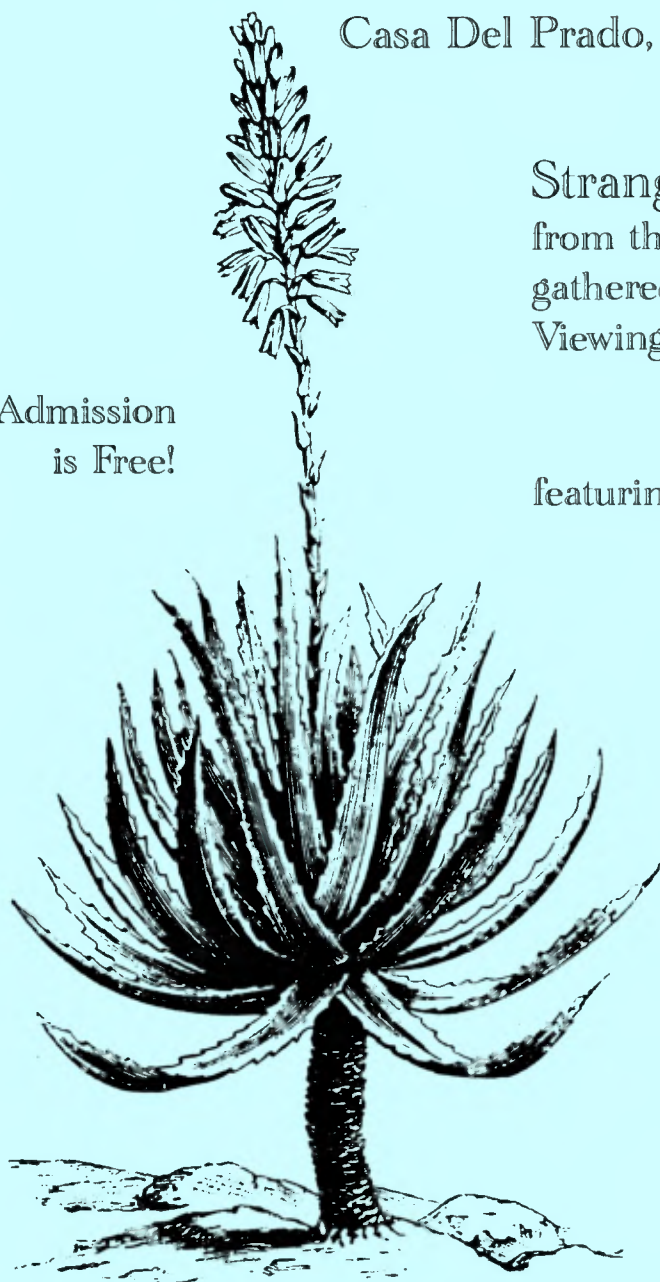
SHOW Sat. June 1

Noon to 5 pm

Sun. June 2

10 am to 4 pm

SALE Saturday and Sunday  
10 am to 5 pm



Presented by the San Diego Cactus and Succulent Society

call 619-462-1805, 858-569-8510 or visit [www.sdcss.com](http://www.sdcss.com) for more information.

# The Succulent Karoo by Rob Skillin

In south-eastern Africa, the Succulent Karoo ("dry place") is a relatively narrow band of habitat stretching along the coastal regions from southern Namibia into South Africa, and then extending inland in an easterly direction from Cape Town. It contains an astonishing abundance and diversity of succulents and bulbs. This slide program highlights many of the sub-regions of the Succulent Karoo, such as the Richtersveld, Namaqualand, and the Little Karoo, and features succulents from the many plant families found there. Also included is a discussion of the topography and climate, as well as some of the culture aspects of southern Africa. Mr. Skillin will present his program on May 11, in room 101, Casa Del Prado, Balboa Park after 1:00 PM.

Rob has been growing cacti and succulents for approximately 25 years. His primary interest is in plants of the Chihuahuan desert, especially *Ariocarpus*, as well as others such as *Aztekium*, *Strombocactus*, *Obregonia*, etc. He also has a diverse collection of Mesembs and other succulents, particularly caudiciforms. He is an avid grower of plants from seed, and now has a number of specimens in his collection dating back to 1982.

Rob is the president and past vice-president of the Bakersfield Cactus and Succulent Society, and past Show and Sales Chairman of the Santa Barbara Cactus and Succulent Society. He is also a past member of, and got his start with, the San Diego Cactus and Succulent Society.

Along with Rob's interest in cacti and succulents, he also enjoys photography and travel. As a result, he has made extensive explorations of the western US and Mexico, and portions of South America and Africa, from which he has put together a number of slide presentations. Several of his photographs have been published on the cover of the Journal. His presentation will be an excellent way to learn about the one of the most diverse and rich ecosystems in the world, South Africa. See you there!

**COVER:** Eugene Orth was the winner of the show flyer contest which graces the cover our May - June issue. He has been a member for a couple of years and started growing Aloes at the age of four. He is particularly interested in caudiciforms and Cycads but really likes all kinds of succulents.



PLEASE NOTE: This is the last month for this address, see page 5 for details. July (no June issue - we get a short break) will have different contact information. Until then, send your letters, artwork, poetry, Cactus or Succulent of the Month articles, puzzles, comments, or criticisms, etc. to:

Tom Knapik  
4669 71street  
La Mesa, CA 91941  
Phone 619-462-1805 e-mail eyf 2000  
Call ahead for FAX 858-569-8510

**NEWSLETTER SUBMISSIONS ARE DUE BEFORE THE 14<sup>TH</sup> EACH MONTH UNLESS OTHER ARRANGEMENTS ARE MADE.**

*Espinas y Flores*, the newsletter of the San Diego Cactus and Succulent Society, Incorporated, P.O. Box 33181, San Diego, CA 92163-3181, is published monthly with the exception of a combined May-June issue (11 mailings per year). Newsletter circulation is approximately 275, with approximately 20-30 issues going to educational institutions, botanical societies, cactus and succulent nurseries, local publications, related natural history events, exhibits, and other interested groups or individuals upon request. Subscriptions are \$15 per year for bulk mail within the U.S.A.

Opinions stated in the articles and editorials of *Espinas y Flores* are solely the opinions of the authors or editor (one issue to go) and do not necessarily represent the opinions of other SDCSS members, the Board of Directors, or the organization in general. All materials submitted to *Espinas y Flores* for possible publication may be edited in form and content. All material in this newsletter, *Espinas y Flores*, may be reprinted by other nonprofit organizations (unless such permission is expressly denied in a note accompanying the material) provided that: proper credit is given to the SDCSS, *Espinas y Flores*, and the author. Please send one copy of the publication containing the reprinted material to the editor. Reproduction in whole or part by any other organization of publication without the permission of the editor is prohibited. Volume 37, Number 5 & 6, Published, May 1, 2002.

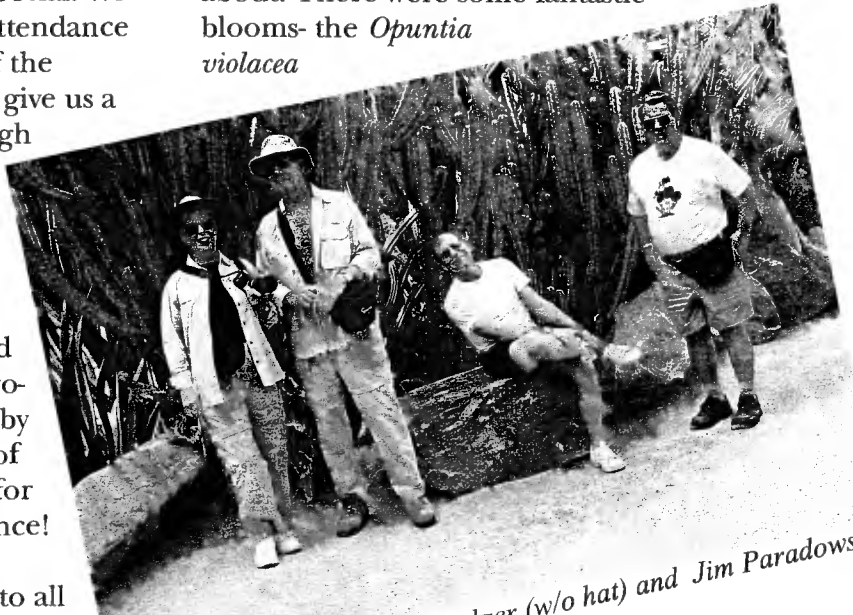
# PRESIDENT'S MESSAGE MAY 2002

April certainly was a busy month for our Society. The April meeting was very special. We had over 75 members and guests in attendance to hear Mark Muradian, a member of the Fresno Cactus and Succulent Society, give us a multi-sensory tour of Soqotra. Though we have seen programs of this area before, it is such an amazing place, and each presenter has his own unique perspective, I heard nothing but praise for this delightful and educational program. We also enjoyed Michelle Heckathorn's talk on pelargoniums and Mark Fryer (along with baby Justin) educated us on many aspects of Echinocereus. Thanks to all of them for sharing their knowledge and experience! We had a record breaking day at the benefit drawing table as well - thanks to all who participate by buying tickets and donating items. Special thanks to Joe Quijada for donating some beautiful big Euphorbias. Special thanks also to Dr. Lee Phelps for his donation of books from his personal library -

look for more in the future - along with some special plants!

The next day we departed early for our Spring Field Trip to The Living Desert and Moorten's Botanical Garden. We had a good group of members - including two new members. It was quite a fun day

- rather warm but that is what the desert is about! There were some fantastic blooms- the *Opuntia violacea*

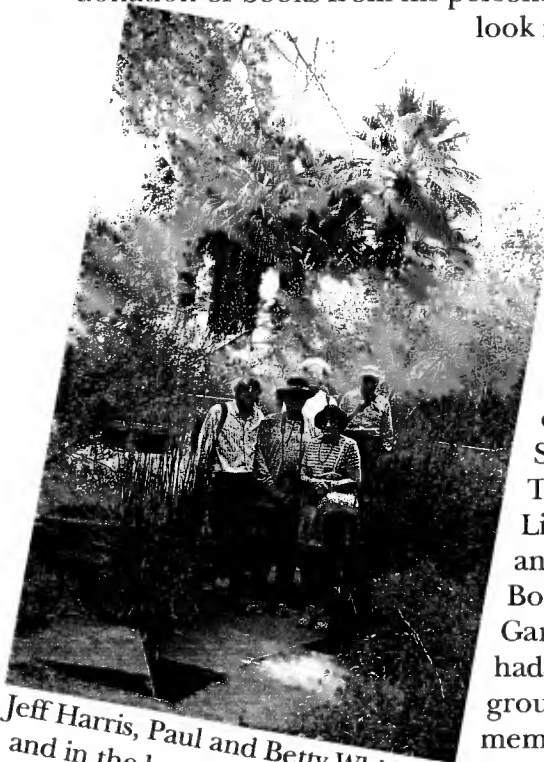


Kay and Joe Quijada, Lee Badger (w/o hat) and Jim Paradowski

amongst the foot thick "snow" of the cottonwoods was my favorite. We hope all of you who came along enjoyed the trip - and a special thanks to Lee Badger who did all the footwork to arrange the trip and private tours of the gardens.

On Sunday, April 21, we participated in Earth Fair in Balboa park- the largest Earthday celebration in the country. It was a fine and busy day, as usual. We talked to many people about Succulents and our Society, handed out flyers for the June Show and sold some plants. Thanks to all who helped out - especially Joe Kraatz, Tom De Merritt, Jeff Harris and Si Osgrove, who got the shade awning set up before I got there! Thanks also to Bobbie Noel, Lee Badger, and Sara Schell, and Herb Stern who helped out talking with people and selling plants.

Don't forget —our big Show and Sale is less than a month away. Now is the time to be looking over your plants and making final preparations. We especially invite those of you who have not shown plants in the past to bring in a plant or many plants - the more people who participate the better the show. Look over your collection - a plant does not have to be the biggest or best - if it is special to you - bring it in and join the fun of participating.



Jeff Harris, Paul and Betty Whitaker and in the back, Lee Badger (with his hat) and Wilbur Glover

See you on the 11<sup>th</sup> of May. Pam Badger [pambadge@earthlink.net](mailto:pambadge@earthlink.net)

# CALENDAR OF UPCOMING EVENTS

## — 2002 —

### MAY

- 18 SDCSS participates in Buds n' Bloom, Balboa Park, call Pam at 619-589-1223 to help with this event!  
18-19 Gates Cactus and Succulent Society, 27th Show and Sale. Call 909 (?) 360-8802 or Write to Buck Hemenway, at BuckHen@earthlink.net.

### JUNE

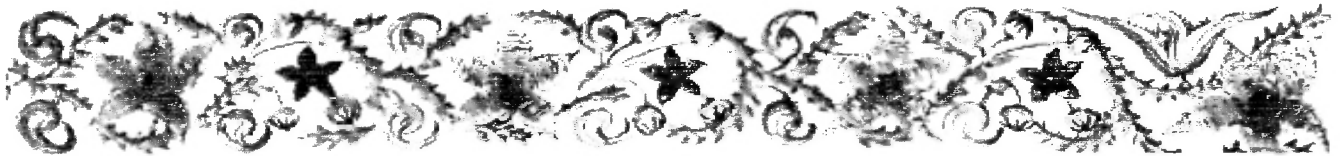
- 1-2 SDCSS Spring Show and Sale. **START PLANNING FOR THOSE AWARD WINNERS, IT IS NEVER TO SOON!**  
7-9 Mid-West Regional Conference, Kansas City, MO. Details: Eva Allen 816-444-9321 or e-mail: emallen@earthlink.net This is bound to be the C&S hobby event of the year, please make sure to check out their web page at <http://ourworld-top.cs.com/kccss1809>  
8-9 C&SS of Queensland Show and Sale Mt. Cootha Botanic Gardens. Details from club, e-mail : cssq@powerup.com.au or check out their web page at <http://www.powerup.com.au/~cssq>

### JULY

- 6-7 CSSA Show and Sale at The Huntington Botanical Gardens.  
26-28 Pacific Northwest Regional Conference, in downtown Seattle, hosted by the Cascade CSS.  
Info: Eugene Collias, 206-633-5570 or e-mail him at eugenecc@aol.com

### AUGUST

- 15-16 planning a trip to the UK this year? Then why not take the opportunity to look at C&S the way the Brits do it. They are fabulous growers, the British CSS Convention is at Loughborough University.  
Email Charles@btinternet.com  
24-25 16th Annual Intercity Show and Sale, L.A. County Arboretum  
31 Huntington Succulent Symposium. Call 626-405-2160 for details and topic.



**FYI FYI FOR YOUR INFORMATION FYI FYI**

**SHOW AND SALE AND SHOW AND SALE AND SHOW AND SALE AND SHOW AND SALE AND SHOW**

⇒ Please mark your calendars for **May 31, June 1, and 2, GET READY—ITS SHOW TIME AGAIN!** Please set aside some time to help out with the show set-up, and tear down. Call **Tom Knapik** (619-462-1805) to help with the Show or **Tom Birt** (858-452-0389) to help with the Sale.

The SDCSS Show schedule has stabilized with few changes for 2002. If you would like to display those plants of yours but competition is not your thing ... we have **white cards** (show tags) for you. Entries with White Cards are not judged. Please read the schedule and rules carefully, don't water your plants then bring them in, let them drain at home, also leave your ants, spiders, snails and mealy bugs at home! If you are going after awards **read the rules**. Over the last few years we have tried to speed up the judging and have less wear and tear on our clerks. . Please pick up your show tags at the next meeting and have them filled out when you come in on Friday May 29. If you need help there will be folks to assist you. If you have questions please call **Joey** or **Tom** about entries. More supplies will be available at set-up time including more tags and an alphabetical listing of the genera.

**Sales Questions** should be directed to **Tom Birt** (phone above). If you want to sale plants please contact him immediately to get a sales contract and arrange for bar codes for your plants. Tom needs advance notice and there is a deadline of May 27 for participation.

Please **bring in those plants** to display! Did you know we have a Cactus Deficit – Please bring in those cacti, if not to win big at least to share with the thousands of folks that see our show. There are a lot of people that just come to see what a cactus looks like. We need you to **enter plants** to show San Diego what a great diversity of succulents that we are enthusiastic about. We have special entry cards to help out those of you that have not shown many plants. The cards are **green**. For those with a bit more experience there are **yellow** cards and for commercial growers and advanced participants there are **blue** cards.

⇒ Hey, thanks to **everyone** who contributed to last months Benefit Drawing table, books, pots and all thanks!

# Other Diversions

Hey Everyone, we are retiring! This is our 'Swan Song' newsletter, at least as your *Espinas y Flores* editors. It has been great fun and very rewarding at times, working together on this newsletter for a mere 32 issues. Our club publication has come a long way since August 1965, when it was "*Cactus y Suculentos*", that was Volume 1, Number 1. *Espinas y Flores* has graduated from the mimeograph to the computer age, some of us remember the smell and that blue printing - don't we!

With all of the technology, we have still managed to make a few typos and grammatical errors, nice to know some things don't change! That said, we have appreciated your comments and support. One of the best things about SDCSS is the support members give to running of the club. Please take a look at the articles and say thanks to our many volunteer writers!

I am looking forward to being able to have a bit more time to pursue other interests that have been on hold at various times since August 1999, one weekend a month. Did you know that I'm in charge of getting the Zoological Society of San Diego's Botanical Conservation Center (BCC) up and running? I saw a few of you there at our open house last November. This year I have been busy with a native plant inventory, listing all the native plants that grow on the grounds at the Wild Animal Park (with 1800 acres with half set aside as a conservation area). Other duties include making seed collections, exotic problem plants and the associated permits to get all this going.

Tom is the current President of the San Diego Bromeliad Society and is working to build up and improve that club. He will be traveling to Chile again in 2003 for participation in the 'Copiapoathon' with Rudolph Schultz and Attila Kapitany. I look forward to his slide shows from this and his other adventures.

It has been a real pleasure to work with Tom and be part of some of our clubs' history. I have learned a lot about the plants and we have played off of each others abilities; a real team effort to build something that we hope you have enjoyed. Tom and I will continue to be

contributors, but we will be enjoying other things as well. You will see us around, we will help out and hope to gracefully pass the torch to the next in line. Please help support the new *Espinas y Flores* editors, it is one of the San Diego Cactus and Succulent Societies great traditions. See you at the around ... Joey.



Joey, in the wild areas at the WAP, pressing plants and recording field information.



Tom photographing *Pediocactus peeblesianus* in habitat.

## SHOW TIME

Our big show and sale is right around the corner and we all need to get ready. If you won a trophy last year, please have it engraved with your name, using the same font, and bring it in to our May meeting. Start thinking about which plants of your collection are at their peak and get them ready also. Tell them they are going to a big event to be shown off in June. They will need an entry card that will be available at the May meeting.

The show schedule is printed in this edition and there are some changes to be aware of. The specialty division IV has trophy awards that have been donated over the years. If you wish to enter your plant in one of these categories, it will not be considered for another division trophy. For example, if you have a fantastic *Mammillaria* from Baja, you need to decide which trophy, best *Mammillaria* or best Mexican Plant you want your plant to be eligible to win because, it can not be both. We do this to simplify the judging process, which takes hours. With more than 700 entries last year, I hope we can grow in size without being limited by the judging time.

On Friday May 31, there will be members helping unload cars of those who would like the help. Also, please bring in those empty boxes for our sales area. If you are interested in selling please contact Tom Birt our Sales Chair. You must obtain a bar code number before the deadline or you will not be able to sell at our event. As our president mentioned, we need your help and participation to make this, a huge success. See you there, Tom.

SAN DIEGO CACTUS AND SUCCULENT SOCIETY SPRING SHOW — JUNE 1 & 2, 2002

Plant Entry Classification Schedule for the SDCSS Spring Show

★ DIVISION I - CACTI

1. *Frailea, Blossfeldia*
2. *Uebelmannia, Buiningia*
3. *Parodia*
4. *Notocactus*
5. *Gymnocalycium*
6. *Rebutia, Sulcorebutia*
7. *Echinopsis, Lobivia, Weingartia, Soehrensia, etc.*
8. *Melocactus, Discocactus*
9. *Copiapoa*
10. *Neoporteria, Neochilenia, Islaya, Pyrrhocactus, Horridocactus, Erioseye, etc.*
11. *Borzicactus, Matucana, Oroya, Denmoza*
12. TUBE FLOWERED CEREONDS: *Arrojadoa, Haageocereus, Cleistocactus, Oreocereus, Espostoa, etc.*
13. WIDE FLOWERED CEREONDS: *Trichocereus, Pilosocereus, Cephalocereus, Pachycereus, Stenocereus, Myrtillocactus, Peniocereus, Wilcoxia, etc.*
14. *Echinocereus*
15. *Gymnocactus, Hamatocactus, Neolloydia, Pediocactus, Sclerocactus, Thelocactus, Turbinicarpus, Ancistrocactus, etc.*
16. *Coryphantha, Escobaria*
17. *Mammillaria* and allies: Both single and multiple
18. *Ariocarpus, Obregonia, Strombocactus, Aztekium, Epithelantha, Pelecyphora*
19. *Astrophytum*
20. *Ferocactus*
21. *Echinocactus, Echinofossulocactus, Stenocactus*
22. EPIPHYTIC CACTI: *Selenicereus, Hylocereus, Heliocereus, Aporocactus, Epiphyllum, Disocactus, Rhipsalis, Schlumbergera, etc.*
23. *Pereskia, Opuntia, Tephrocactus, Pterocactus, Quiabentia, Maihuenia, etc.*
24. Other genera of cacti
25. CRESTED & MONSTROSE CACTI
26. VARIEGATED CACTI

★ DIVISION II - OTHER SUCCULENTS

30. *Alluaudia, Didierea & Decaryia*
  31. *Lithops, Conophytum, Argyroderma, Pleisopilos, Fenestraria, etc.*
  32. *Trichodiadema, Mestoklema, etc.*
  33. *Anacampseros, Portulaca, Portulacaria, Ceraria & Talinum*
  34. *Kalanchoe*
  35. *Cotyledon, Tylecodon, Adromischus*
  36. *Crassula*
  37. *Aeonium, Greenovia, Monanthes, Sedum, Sempervivum, etc.*
  38. *Pachyphytum, Tacitus, Graptopetalum, Orostachys, etc.*
  39. *Echeveria*
  40. *Dudleya, etc.*
- MADAGASCAR ENDEMIC EUPHORBIAS:
41. *Euphorbia - Milii Type: milii, duranii, beharensis, horombensis, etc.*
  42. *Euphorbia - Stem Type: neohumbertii, pachypodioides, ankarensis, viguieri, stenoclada, platyclada, etc.*
  43. *Euphorbia - Thickened Root or Caudex: decaryi, francoisii, cylindrifolia, etc.*
- ALL OTHER EUPHORBIAS:
44. *Euphorbia - spiny*
  45. *Euphorbia - non-spiny*
  46. *Euphorbia - caudiciform*
  47. *Jatropha, Pedilanthus, Monadenium, etc.*
  48. *Senecio, Kleinia, & Othonna*
  49. *Pelargonium & Sarcocaulon*
  50. STAPELIADS: *Caralluma, Huernia, Stapelia, Hoodia, Pseudolithos, etc.*
  51. VINE FORMING ASCLEPS: *Hoya, Ceropegia, Cynanchum, Sarcostemma, etc.*
  52. *Fockea, Brachystelma, Raphionacme, Gonolobus, etc.*
  53. *Pachypodium & Adenium*
  54. *Cissus & Cyphostemma*
  55. *Ficus & Dorstenia*
  56. *Fouquieria & Idria*
  57. *Ibervillea, Gerrardanthus, Kedrostis, Seyrigia, Xerosicyos & Adenia*

58. *PACHYCAULS (thick stems, other than those listed): Bursera, Commiphora, Bombax, Adansonia, Pachycormus, Operculicarya, etc.*
  59. CAUDICIFORMS & GEOPHYTES (thickened rootstock, other than those listed): *Ipomoea, Dioscorea, Bowiea, Sinningia, etc.*
  60. *Aloe*
  61. *Gasteria, Astroloba, etc.*
  62. *Haworthia*
  63. *Sansevieria*
  64. *Agave, Yucca, Hesperaloe, Nolina*
  65. *Beaucarnea, Calibanus, Dasylirion, Dracaena*
  66. *Deuterochonia, Dyckia, Hechtia, etc.*
  67. Any other genus
  68. CRESTED & MONSTROSE SUCCULENTS
  69. VARIEGATED SUCCULENTS
- ★ DIVISION III - COLLECTIONS
- A set of 6 - 10 different specimens that are related by a common theme: genus, form, shape or other character.
75. Cacti
  76. Other succulents
  77. Dish gardens and planters (no tags necessary here)
- ★ DIVISION IV - SPECIALITIES
- These categories combine cacti and succulent plants that are related by the classes listed below:
80. San Diego County Succulent
  81. Baja Plant
  82. Mexican Plant
  83. Grafted Succulent
  84. Seed Grown by Exhibitor
  85. Miniature (≤ 3 inches)
  86. Pachycaul or Caudiciform
  87. Succulent Bonsai
- ★ DIVISION V - DISPLAYS
88. Displays and Exhibits
- ★ DIVISION VI -ARTWORK
- NON COMPETITIVE
89. Succulent Plant: Photography and Artwork

PLEASE NOTE THAT THE CLASSIFICATION NUMBERS HAVE CHANGED AS WELL AS THE DIVISION MAKE-UP

**Entry Notes:** PLEASE USE THE MOST CURRENT CLASSIFICATION SCHEDULE. The classes and numbering have changed.

Classes 1-69 are divided into two pot sizes: A and B (A=5 inches and under, B over 5 inches - measurements are of the maximum inside dimension). Note that one plant per container is allowed in these classes.

Three categories for competing entries are as follows: **GREEN** cards for exhibitors that have won 10 or less blue ribbons in a recognized cactus and succulent show. **YELLOW** cards are for participants that have won more than 10 blue ribbons. **BLUE** cards are for commercial exhibitors and those that want to compete against them. Awards will be selected from any category. **WHITE** cards are for those folks that do not want to compete, but want to display their plants.

## Show Rules

Read the Entry Notes below the Plant Entry Classification Schedule. The show is open to anyone that grows succulent plants. There is no limit to the number of entries per class or the number of classes entered, though no entry can be entered in more than one class. All property shall be marked with the owner's name, not visible to the judges. Plants must be grown by the exhibitor for at least six months.

All entries must have properly filled entry cards and must be entered on the appropriate Division and Class to be eligible for some of the awards. Exhibitors are responsible for placing these items with their entries. For the best plant grown from seed, the exhibitor must have raised the plant themselves. Plants may be species or hybrids. Hybrids may be exhibited in the class of either parent. Grafted plants will be accepted in any class, though awards for grafts will be selected from Division IV.

Entries must be clean, healthy (pest free) and dry. Remove Plant name tags in pots (except for collections and displays). Awards must remain with exhibits until the close of the show. Classes with few entries may be combined, classes with too many entries may be split into B and C (for oversize). The show committee reserves the right to reject plants or exhibits and to readjust entries for the good of the show. Show hours must be followed. The San Diego Cactus and Succulent Society will exercise due caution in safeguarding exhibits, however, it cannot assume responsibility for loss of property. Entries are judged against perfection. The judges' decisions are Final. In the case of disputes the show chair(s) shall make final decisions.

**TROPHIES AND PLAQUES**, are perpetual, except the educational and novice awards. First, Second and Third place ribbons will be awarded in each class; however, should the judges feel that: First, Second or Third place is not merited, it will be withheld. To receive the CSSA Award two or more educational displays must be entered.

### CACTUS

Best Cactus..... Phillip Corliss Plaque  
Best Novice Cactus ..... SDCSS Plaque  
Best Epiphytic Cactus Plant .....  
..... William & Ruth Nelson Trophy  
Best Mammillaria..... Elibet Marshall Trophy  
Best Opuntiae ..... James & Shirley Berry Trophy

### OTHER SUCCULENTS

Best Succulent ..... Ruby Falk Plaque  
Best Novice ..... SDCSS Plaque  
Best Agave ..... Doris Rake Plaque  
Best Aloe ..... Barbara Jeppe Trophy  
Best Echeveria..... Oliver & Sophie Loyland Trophy  
Best Euphorbia ..... Russell & Lydia Evans Cup  
Best Mesembryanthemum .....  
..... Samuel & Adela Markey Trophy  
Best Pelargonium or Sarcocaulon .....  
..... Wilna Johnson Trophy  
Best Sansevieria ..... Richard G. Latimer, Sr. Trophy

### CACTI OR SUCCULENTS

Best Baja Plant .....  
..... Richard G. Latimer Jr. Memorial Trophy  
Best Graft..... Bob & Suzanne Taylor Trophy  
Best Mexican Plant in Show ..... Dudley B. Gold Trophy  
Best Plant From Seed Grown ... Tegelberg Family Plaque  
Best San Diego County Succulent . Julianne Rice Trophy  
Best Miniature ..... Monte & Mary Woodworth Plaque  
Best Pachycaul or Caudiciform .....  
..... H. Warren & Virginia Buckner Trophy  
Best Succulent Bonsai ..... Rudy & Teresita Lime Trophy  
  
People's Choice Award .....  
..... Rose D'Attilio Memorial Plaque

### DISPLAYS, EXHIBITS AND HIGH POINTS

Best Educational Display ..... CSSA Award  
Best Exhibit ..... Reuben Vaughan Plaque II  
Most Artistic Display..... Walter & Hazel Scott Plaque  
High Points 50 or fewer entries.....  
..... James & Shirley Berry Trophy  
Sweepstakes Trophy ..... Ronald & Marcia Monroe Trophy

**SET UP TIME: Friday, May 31, Noon-9:00 PM, Saturday, June 1, 7:30-8:00 AM TAKE OUT TIME: Sunday, June 2, after 4 PM**

### ❖ JUDGING SCALE-SPECIMENS, COLLECTIONS AND DISPLAYS ❖

Condition 70%, Staging 15%, Size & Maturity 10%, Nomenclature 5%

### ❖ EDUCATIONAL DISPLAY ❖

Two or more entries must be exhibited for CSSA award. Educational Value, 80%, Staging & Originality 20%

### ❖ AWARDS POINT SYSTEM ❖

Divisions I, II and IV, 1<sup>st</sup>-3 pts., 2<sup>nd</sup>-2 pts., 3<sup>rd</sup>-1 pts., Division III, 1<sup>st</sup>-7 pts., 2<sup>nd</sup>-5 pts., 3<sup>rd</sup>-3 pts.  
Division V, 1<sup>st</sup>-12 pts., 2<sup>nd</sup>-10 pts., 3<sup>rd</sup>-8 pts., Plaques and Trophies, 10 pts.

### ❖ SHOW COMMITTEE ❖

Show Chairs Thomas Knapik & Joseph Betzler, Head Clerk Susan Hopkins, Luncheon Pam Badger  
Sales Chair Tom Birt, Sales Managers Tom Birt & Jeff Harris, Refreshments SDCSS and the membership

### ❖ JUDGES ❖

To Be Announced

TIEBREAKERS WILL BE JUDGED BY THE HEAD CLERK OR THEIR APPOINTEE

### ❖ THE SAN DIEGO CACTUS AND SUCCULENT SOCIETY ❖

P.O. Box 33181, San Diego, California 92163-3181, is a public service and educational (nonprofit tax exempt) organization.  
Your donations are graciously accepted.

# SUCCULENT LAMIACEAE

BY JOYCE BUCKNER

Lamiaceae or Labiatae, the Mint family, consists of approximately 200 genera, mostly herbs and undershrubs. Regarded as one of the most highly evolved of all dicotyledonous families, it is revered for its scented herbs - mint (*Mentha*), lavender (*Lavendula*), catnip (*Nepeta*), sage (*Salvia*), basil (*Ocimum*), marjoram or oregano (*Origanum*), and rosemary (*Rosmarinus*), as well as its colorful foliage (*Coleus* and *Plectranthus*) and attractive flowers (*Salvia*, *Monarda*, *Moluccella*, *Prostanthera*, & *Phlomis*).

Indeed, it was the wonderful aroma of *Plectranthus amboinicus* that first drew my attention to this family. Aromatic glands on both sides of hair covered succulent leaves emit a pleasant "Vicks" scent activated by the slightest touch or even a gentle breeze. An unnamed *Plectranthus* species from Socotra (G. James) with small very thick leaves has a scent akin to "Irish Spring" soap, and *Plectranthus coleoides* gives off a vigorous refreshing scent which I find pleasant, a perception not shared by all! These aromas probably provide plants with some kind of beneficial survival attributes. Perhaps an insect repellent? Or perhaps a territorial mechanism? It has been discovered that terpenes exuded from the leaves of the Californian *Salvia leucophylla* prevent nearby grasses from growing or germinating. Perhaps the plectranthus' aroma serves a similar purpose.

Distribution of Lamiaceae is practically worldwide. They grow in almost all types of habitats and altitudes, from the Himalayas to Hawaii, and from Australia, Asia and Africa to North and South America. However, the succulent

genera are mostly endemic to Africa (*Aeollanthus*, *Plectranthus*, *Solenostemon*, *Tetradenia* and *Thorncroftia*) and Madagascar (*Plectranthus*, *Dauphinea* and *Perrierastrum*). The other succulent genera of Lamiaceae (*Coleus*) originated in India, Southeast Asia and some parts of Africa.



Several Lamiaceae have edible, highly nutritious tubers. *Plectranthus esculentus* is commonly known as the Livingstone potato. Grown in Malawi, Zambia and Ethiopia, it is highly adaptable and can be grown in almost any climatic zone provided there is adequate rain/water during growing season and soil is well drained. Yellowish white stem tubers are covered with minute hair and grow in clusters. They are said to taste similar to turnips or parsnips. Leaves resemble mint in appearance.



*Solenostemon rotundifolius*, the Zulu Round potato, has bluish violet flowers, aromatic leaves, and a dark brown oblong or round tuber that appears to have good caudiciform potential. The nutritional value of these tubers is superior to that of potatoes or sweet potatoes. It can tolerate low temperatures and will produce some tubers even under drought conditions.

The tubers of *Coleus rotundifolius* (Hausa potato) are eaten as a potato substitute in India and Southeast Asia. There are several other xerophytic coleus species with swollen stems and basal regions and succulent leaves that have yet to be developed or propagated for the succulent enthusiast.



*Plectranthus ernestii* Codd.



*Plectranthus amboinicus* (Lourteig) Spreng

The thickened golden base stems of *Plectranthus ernestii* (South Africa -Natal & Kenya) make marvelous caudiciform show plants. Fast growing in the summer, a sizable impressive plant can be grown from cuttings in three to five years. Last summer, I noticed the hummingbirds meticulously stopping at each small blue bloom of their flowering shoots. Leaves get dark purple margins in bright light.

An explosive pollination mechanism is utilized by *Aeollanthus* (tropical southern Africa). The stamens are held under tension by the enfolding lobes of the corolla; when an insect lands on the lower lip the stamen snaps loose, releasing a cloud of pollen on the insect.

Culture for all of these Lamiaceae seems easy - so far! They do best in bright filtered light and a well draining soil mix. Watering is practically nil in the winter, and as frequent as needed in the hotter months. Here on the coast they can be entirely neglected even in the summer when given enough shade.

We have recently acquired a few relatively unknown species: *Plectranthus prostratus* a nice looking hanging plant with small, fat - almost round succulent leaves. An unnamed *Plectranthus* from Somalia - a straggly weedy shrub with possible bonsai potential. The *Aeollanthus rehmannii* offers the most potential in my book - it is already forming a thickened base stem, along with its small intricate leaves, this guy shows some real miniature potential.

If you have any interesting coleuses, or a nice Creeping Charlie (*Plectranthus australis*), etc. please bring them in.

References:

- V.H. Heywood, **Flowering Plants of the World**, 1978, Mayflower Books, New York - USA.
- Alfred Graf, **Hortica**, 1992, Roehrs Co., New Jersey.
- Gordon Rowley, **Name that Succulent**, 1980, Stanley Thornes Ltd, Great Britain.
- M. Sajeva & M. Costanzo, **Succulents - The Illustrated Dictionary I & II**, 1994 & 2000, Timber Press, Portland, OR USA.
- Ben-Erik van Wyk & Nigel Gericke, **People's Plants - A Guide to Useful Plants of Southern Africa**, 2000, Briza Publications, Pretoria - S.A.
- Jan Pribyl, **Indoor Plants**, 1995, Magna Books.

# Out of This World *Astrophytum*s

by Kelly Griffin

I chose the subject of *Astrophytum*s and their cultivars for a very simple reason, they are my favorite cacti and what other reason is needed? Perhaps though, I should offer some others. First, they are fantastically shaped - Circles, Squares, Triangles, Pentagons, you name it. Many are cloaked in flocking so heavy you would swear that the plants had a close encounter with the machine they use to coat Christmas trees. With the exception of *Astrophytum ornatum* and *A. capricorne*, they are devoid of spines and most *A. capricorne* are spine-wise very user friendly anyway. They are for the most part easy to grow. Certainly they are among the easiest cactus to grow from seed. High germination rates with very low losses to rot are the norm. Here are the *Astrophytum* species as I know them.

The most Northerly *Astrophytum* is *A. asterias* which occurs in Texas (and I'm not just talking about collections here) and also in the Mexican state of Tamaulipas. It is the closest thing the plant kingdom has to the sea urchin for which it is a dead ringer! It is not a good beginner plant though for it needs to have water at only the right time and exactly what is the right time has eluded me thus far. It has often brought me to tears as it turns to mush overnight. I have had more success growing it on graft. Many growers say they do not have trouble with it but with hundreds, losing one is hardly noticeable.

*Astrophytum coahuilense* occurs as one might guess in the Mexican State of Coahuila. It grows in the southwest part of the state. To many of you it might superficially look just like *A. myriostigma* but it differs in several very important features. It is very densely flocked and the flower is much like that of *A. capricorne*, notably larger than that of *A. myriostigma* and possessing a red throat unlike *A. myriostigma*. Also, this plant is even easier to maintain than *A. myriostigma*. Perhaps the dense flocking these plants have confuses the mealy bugs and they move along to other apparently less congested plants.

*Astrophytum capricorne* and its varieties occur in south central Coahuila. The premiere plant of this entire genus is found in this group, *Astrophytum capricorne* var. *niveum*. It is a regal looking plant with sparse curving spination and nice flocking. Small plant bodies characterize *A. capricorne* var. *minor* and dense twisted spines that often completely obscure the plant itself. Unlike most of the other *A. capricorne* varieties, this one often clusters. Sometimes the plants are extremely difficult to distinguish from a clump of dried grass or weeds. Others of note in this group are *A. capricorne* var. *senile*, *A.*

*capricorne* var. *crassispinum* with heavy goat horns and my absolute favorite *A. capricorne* var. *aureum*, the golden spined variant. The flowers of *A. capricorne* that I have observed are of good size, yellow and flushed with reddish orange in the center.

Traveling to the east and to the south of the *A. capricornes* range you encounter *A. myriostigma*. It is characterized by pentagonal plants with a high degree of variation in both the shape and epidermal flocking. I might say the degree in variation is great, but not so much in individuals within a population, but rather from one population to another. I have observed populations of plants of the "nudum" form - no flocking here! The cubic variety, *A. myriostigma* var. *quadracostatum* occurs within a population of "normal" looking plants at a rate of about 20% or so. I have not seen the variety *columnare*, in habitat, but I do have several in my collection and it is quite distinct. It is much thinner and can be quite tall, several feet I am told. The variety *A. myriostigma* var. *strongilogonum* is very different; it is highly globose and often ribbed especially if stressed for water. Size-wise, it can be as large as a



A beautiful *Astrophytum myriostigma*  
cv. 'Onazuko'

basketball. Most of the *A. myriostigma* plants I have found are within the Mexican states of Nuevo Leon and San Luis Potosi. They have fairly small pure yellow flowers.

As one travels further south into the state of Guanajuato you will find the species of *A. ornatum*. These can be quite large, no doubt the largest plants of the entire genus. I have had the pleasure of visiting and photographing plants that were easily three feet tall. These plants have golden spines and more ribs, usually 6 to 10 as opposed to the five or so found on northern relatives. Interestingly, I was reading in the Innes and Glass book, *Illustrated Encyclopedia of Cacti*, and they mention that *A. ornatum* can grow to a foot tall and 6" in diameter even though they picture a plant that is two feet tall and ten inches in diameter. Clearly they do become much larger than this but maybe this is the limit for British greenhouses. The most ornate *A. ornatum* I have witnessed grow very near the new dam (famous for displacing *Echinocactus grusonii*) in the area of Vista Hermosa in the state of Hidalgo. These plants are densely covered with white flocking and the bright yellow spines seem to glow against the background of white. I might add that the plants do tend to lose the flocking with age. Perhaps a bit of juvenile protection that is not so important as the plants mature. *A. ornatum* has big clear yellow flowers. I would like to make a note – that when I made reference to where a plant occurs I was not concluding that it only occurs there. I only know where I have been and what I have seen, what has been told to me and what I have read.



Super Kabuto, a fantastic cultivar

There is a great deal of material here. If you just grew the species and the variations among *Astrophytums*, you could easily fill a good-sized greenhouse. We have infinitely more plants to play with when you start creating hybrids. Some outstanding examples are described below:

1. 'Super Kabuto' is an over the top selection of *A. asterias* and I have had the best luck growing this on graft, again the parentage of too much *A. asterias* is problematic for me.
2. An interesting combination of species is *A. asterias* x *A. coahuilensis*. I have been growing this on its own roots fairly well so far, no doubt due to the addition of *A. coahuilensis* to the mix.
3. Two unique forms that I don't have any history on are 'Lotusland' and a mutant form of *A. columnare*. These appear to be monstrose forms that might down right scare some people, but I had to have'em!
4. 'Onazuko' is a strange but extremely beautiful form of *A. myriostigma*. In these plants, the epidermal covering is somewhat waxy and it is patterned such that it gives these plants a truly otherworldly look. I have three small plants in my collection. They are expensive if you can even find them, but well worth the money, in my opinion. Unlike the *A. asterias*, most people would not experience much trouble with these.
5. One of my long time favorites has been a crested *A. myriostigma* that I grew from seed. Certainly one of the best reasons to grow plants from seed is to get these oddly beautiful plants that pop-up from time to time.
6. *Astrophytums* that I still covet are almost too numerous to mention here but one that has still eluded me is the tripod, a three-ribbed cultivar. These triangular plants make the square ones blush with envy!

Rather than list some book references that helped me along here I would like to take this opportunity to thank Woody Minnich for teaching me so much about Mexican cacti in general and also raising the bar so to speak with my photography. Additionally, I would like to thank Jerry Hunter for supporting and encouraging me in my quest for better knowledge of these plants.

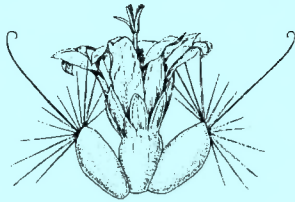
If you have a neat *Astrophytum* specimen, by all means bring it in to share with all of us! Let those *Astrophytums* shine!

Issue Highlights

Succulent Karoo . . . 2  
 Presidents Message . . . . 3  
 Calendar & F Y I . . . . 4  
 Other Diversions & Show Info . . . . 5 - 7  
 Succulent *Lamiaceae* . . . 8 - 9  
 Astrophytums . . . 10 - 11

The San Diego Cactus & Succulent Society, Inc.  
 P.O. Box 33181, San Diego, CA 92163-3181

NONPROFIT ORG.  
 U.S. POSTAGE  
**PAID**  
 SAN DIEGO, CA  
 PERMIT NO. 737



Please check the top line of your label for, year/month your membership expires. If the date is getting close – PLEASE RENEW. THANKS for your help.



## ESPINAS Y FLORES

Editors: Tom Knapik - 619-462-1805  
 Joey Betzler - 858-569-8510 Last One  
 Mail to: 4669 71 St., La Mesa, CA 91941  
 call for fax or e-mail eyf2000@aol.com

San Diego Cactus and Succulent Society, Inc.

### 2002 Executive Board Members

#### OFFICERS

President - Pam Badger  
 619-589-1223  
 Vice Pres.- Jeff Harris  
 619-294-5708  
 Secretary - Laura De Merritt  
 858-270-5544  
 Treasurer - George Plaisted  
 619-583-9551

#### EX OFFICIO

Immediate Past President  
 - Tom De Merritt  
 858-270-5544

#### DIRECTORS

Lee Badger  
 619-589-1223  
 Phil Favell  
 760-471-8944  
 Mark Fryer  
 619-299-3429  
 Joe Kraatz  
 760-758-7042  
 Spencer Maze  
 858-454-1870  
 Terry Parr  
 619-460-9111  
 Herb Stern  
 619-223-9134

### SDCSS Volunteers on Standing Committees and Sub-Committees

#### Conservation:

Joey Betzler and Kelly Griffin

#### Education and Exhibits:

Brag Table - Shirley Berry  
 and Kay Quijada

Plants of the Month - Jeff Harris  
 and Lee Badger

Summer Show - Tom Knapik, J.  
 Betzler and Kay Quijada

Winter Show - Ed DeLollis

#### History: Terry Parr

#### Liaison:

Balboa Park Desert Garden-

Susan Hopkins

CSSA Affiliate Rep. -

Kelly Griffin

Quail Botanic Gardens -

Phylis Flechsig

San Diego Botanic Garden

Foundation - George Plaisted

San Diego Floral Association -

Elizabeth Glover

S. D. Wild Animal Park's Baja and

Succulent Collections - Chris Miller

#### Library:

Tom Birt and Phil Bunch

#### Membership:

Joey Betzler (858-569-8510) and  
 Collette Parr

#### Mailing:

Pam Badger and Jeff Harris

#### Plant and Seed Exchange:

Plants - Michele Heckathorn and Sara  
 Schell

Seeds - Kelly Griffin

#### Plant Sales and Supplies:

Annual Sales - Tom Birt

Auction and Holiday Plants - L. Badger,  
 and Tom De Merritt

Benefit Table - Lee Badger

Monthly Plant Sales - Jeff Harris and  
 Joe Kraatz

Monthly Supply Sales - George and Jerry  
 Plaisted

#### Publicity: Tom De Merritt and Stan Yalof

Programs: Kelly Griffin (760-942-4866)

#### Reception:

Ethel Standish

#### Regalement:

Monthly - Lee Badger and Rudy Lime  
 and Stefy Mangold

Picnic - Laura and Tom De Merritt

The SAN DIEGO CACTUS AND SUCCULENT SOCIETY, INC. is open to all persons interested in growing cacti and other succulent plants. Meetings are held the second Saturday of each month (except June, Sept. and Dec.) at 1:00 PM in room 101, Casa del Prado, Balboa Park. Executive Board meetings are open to all members; call any officer or director for the time and location. Annual dues are \$15.00 per single member per year, \$5.00 for each additional (associate) member within the same household. Single copies of *Espinass y Flores* are \$2.00 per copy sent within the USA; foreign subscriptions are \$30.00. Affiliated with the CACTUS AND SUCCULENT SOCIETY OF AMERICA, INC. The SDCSS Web Page is: SDCSS.CDM - please take a look and give feedback to the webmaster.

# Cactus and Succulent Show

Casa Del Prado, Balboa Park Room 101

Strange and Exotic Plants  
from the far corners of the World  
gathered together for your  
Viewing Amazement!

Admission  
is Free!

Courtyard Plant Sale

featuring a selection of choice specimens  
from over twenty growers,  
as well as Handmade Pottery!

SHOW Sat. June 1

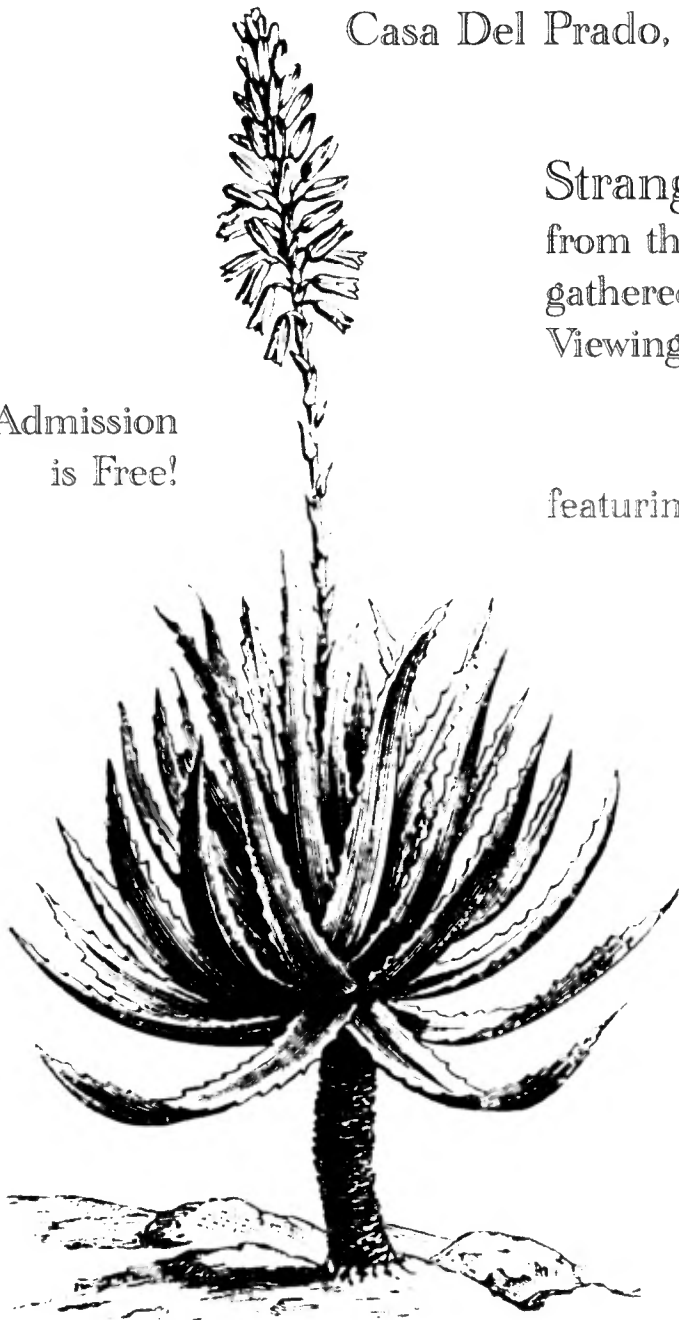
Noon to 5 pm

Sun. June 2

10 am to 4 pm

SALE Saturday and Sunday

10 am to 5 pm



Presented by the San Diego Cactus and Succulent Society

call 619-462-1805, 858-569-8510 or visit [www.sdcss.com](http://www.sdcss.com) for more information.

Plant Entry Classification Schedule for the SDCSS Spring Show

★ DIVISION I - CACTI

1. *Frailea*, *Blossfeldia*
2. *Uebelmannia*, *Buiningia*
3. *Parodia*
4. *Notocactus*
5. *Gymnocalycium*
6. *Rebutia*, *Sulcorebutia*
7. *Echinopsis*, *Lobivia*,  
*Weingartia*, *Soehrensia*, etc.
8. *Melocactus*, *Discocactus*
9. *Copiapoa*
10. *Neoporteria*, *Neochilenia*,  
*Islaya*, *Pyrrhocactus*,  
*Horridocactus*, *Eriosyce*, etc.
11. *Borzicactus*, *Matucana*, *Oroya*,  
*Denmoza*
12. TUBE FLOWERED CEREONDS:  
*Arrojadoa*, *Haageocereus*,  
*Cleistocactus*, *Oreocereus*,  
*Espostoa*, etc.
13. WIDE FLOWERED CEREONDS:  
*Trichocereus*, *Pilosocereus*,  
*Cephalocereus*, *Pachycereus*,  
*Stenocereus*, *Myrtillocactus*,  
*Peniocereus*, *Wilcoxia*, etc.
14. *Echinocereus*
15. *Gymnocactus*, *Hamatocactus*,  
*Neolloydia*, *Pediocactus*,  
*Sclerocactus*, *Thelocactus*,  
*Turbinicaropus*, *Ancistrocactus*,  
etc.
16. *Coryphantha*, *Escobaria*
17. *Mammillaria* and allies:  
Both single and multiple
18. *Ariocarpus*, *Obregonia*,  
*Strombocactus*, *Aztekium*,  
*Epithelantha*, *Pelecyphora*
19. *Astrophytum*
20. *Ferocactus*
21. *Echinocactus*, *Echino-*  
*fossulocactus*, *Stenocactus*
22. EPIPHYTIC CACTI: *Selenicereus*,  
*Hylocereus*, *Heliocereus*,  
*Aporocactus*, *Epiphyllum*,  
*Disocactus*, *Rhipsalis*,  
*Schlumbergera*, etc.
23. *Pereskia*, *Opuntia*,  
*Tephrocactus*, *Pterocactus*,  
*Quiabentia*, *Maihuenia*, etc.
24. Other genera of cacti
25. CRESTED & MONSTROSE CACTI
26. VARIEGATED CACTI

★ DIVISION II - OTHER SUCCULENTS

30. *Alluandia*, *Didierea* & *Decaryia*
  31. *Lithops*, *Conophytum*,  
*Argyroderna*, *Pleisopilos*,  
*Fenestraria*, etc.
  32. *Trichodiadema*, *Mestoklema*, etc.
  33. *Anacampseros*, *Portulaca*,  
*Portulacaria*, *Ceraria* & *Talinum*
  34. *Kalanchoe*
  35. *Cotyledon*, *Tylecodon*, *Adromischus*
  36. *Crassula*
  37. *Aeonium*, *Greenovia*, *Monanthes*,  
*Sedum*, *Sempervivum*, etc.
  38. *Pachyphytum*, *Tacitus*,  
*Graptopetalum*, *Orostachys*, etc.
  39. *Echeveria*
  40. *Dudleya*, etc.
- MADAGASCAR ENDEMIC EUPHORBIAS:
41. *Euphorbia* - *Milii* Type: *milii*,  
*durantii*, *beharensis*,  
*horombensis*, etc.
  42. *Euphorbia* - Stem Type:  
*neohumbertii*, *pachypodioides*,  
*ankarensis*, *viguieri*,  
*stenoclada*, *platyclada*, etc.
  43. *Euphorbia* - Thickened Root  
or Caudex: *decaryi*, *francoisii*,  
*cylindrifolia*, etc.
- ALL OTHER EUPHORBIAS:
44. *Euphorbia* - spiny
  45. *Euphorbia* - non-spiny
  46. *Euphorbia* - caudiciform
  47. *Jatropha*, *Pedilanthus*,  
*Monadenium*, etc.
  48. *Senecio*, *Kleinia*, & *Othonna*
  49. *Pelargonium* & *Sarcocaulon*
  50. STAPELIADS: *Caralluma*, *Huernia*,  
*Stapelia*, *Hoodia*, *Pseudolithos*,  
etc.
  51. VINE FORMING ASCLEPS: *Hoya*,  
*Ceropegia*, *Cynanchum*,  
*Sarcostemma*, etc.
  52. *Fockea*, *Brachystelma*,  
*Raphionacme*, *Gonolobus*, etc.
  53. *Pachypodium* & *Adenium*
  54. *Cissus* & *Cyphostemma*
  55. *Ficus* & *Dorstenia*
  56. *Fouquieria* & *Idria*
  57. *Ibervillea*, *Gerrardanthus*,  
*Kedrostis*, *Seyrigia*, *Xerosicyos*  
& *Adenia*

58. *PACHYCAULS* (thick stems, other  
than those listed): *Bursera*,  
*Commiphora*, *Bombax*,  
*Adansonia*, *Pachycormus*,  
*Operculicarya*, etc.
59. CAUDICIFORMS & GEOPHYTES  
(thickened rootstock, other than  
those listed): *Ipomoea*, *Dioscorea*,  
*Bowiea*, *Sinningia*, etc.
60. *Aloe*
61. *Gasteria*, *Astroloba*, etc.
62. *Haworthia*
63. *Sansevieria*
64. *Agave*, *Yucca*, *Hesperaloe*,  
*Nolina*
65. *Beaucarnea*, *Calibanus*,  
*Dasyliirion*, *Dracaena*
66. *Deuterochonia*, *Dyckia*,  
*Hechtia*, etc.
67. Any other genus
68. CRESTED & MONSTROSE  
SUCCULENTS
69. VARIEGATED SUCCULENTS

★ DIVISION III - COLLECTIONS

A set of 6 - 10 different specimens that are related by a common theme: genus, form, shape or other character.

75. Cacti
76. Other succulents
77. Dish gardens and planters  
(no tags necessary here)

★ DIVISION IV - SPECIALITIES

These categories combine cacti and succulent plants that are related by the classes listed below:

80. San Diego County Succulent
81. Baja Plant
82. Mexican Plant
83. Grafted Succulent
84. Seed Grown by Exhibitor
85. Miniature (≤ 3 inches)
86. Pachycaul or Caudiciform
87. Succulent Bonsai

★ DIVISION V - DISPLAYS

88. Displays and Exhibits

★ DIVISION VI -ARTWORK

- NON COMPETITIVE
89. Succulent Plant:  
Photography and Artwork

**PLEASE NOTE THAT THE CLASSIFICATION NUMBERS HAVE CHANGED AS WELL AS THE DIVISION MAKE-UP**

**Entry Notes:** PLEASE USE THE MOST CURRENT CLASSIFICATION SCHEDULE. The classes and numbering have changed.

Classes 1-69 are divided into two pot sizes: A and B (A = 5 inches and under, B over 5 inches - measurements are of the **maximum** inside dimension). Note that only **one** plant per container is allowed in these classes.

Three categories for competing entries are as follows: **GREEN** cards for exhibitors that have won 10 or less blue ribbons in a recognized cactus and succulent show. **YELLOW** cards are for participants that have won more than 10 blue ribbons. **BLUE** cards are for commercial exhibitors and those that want to compete against them. Awards will be selected from any category. **WHITE** cards are for those that do not want to compete, but want to display items in the show.

# ☉ SHOW RULES ☉

Read the Entry Notes below the Plant Entry Classification Schedule. The show is open to anyone that grows succulent plants. There is no limit to the number of entries per class or the number of classes entered, though no entry can be entered in more than one class. All property shall be marked with the owner's name, not visible to the judges. Plants must be grown by the exhibitor for at least six months.

All entries must have properly filled entry cards and must be entered on the appropriate Division and Class to be eligible for some of the awards. Exhibitors are responsible for placing these items with their entries. For the best plant grown from seed, the exhibitor must have raised the plant themselves. Plants may be species or hybrids. Hybrids may be exhibited in the class of either parent. Grafted plants will be accepted in any class, though awards for grafts will be selected from Division IV.

Entries must be clean, healthy (pest free) and dry. Remove Plant name tags in pots (except for collections and displays). Awards must remain with exhibits until the close of the show. Classes with few entries may be combined, classes with too many entries may be split into B and C (for oversize). The show committee reserves the right to reject plants or exhibits and to readjust entries for the good of the show. Show hours must be followed. The San Diego Cactus and Succulent Society will exercise due caution in safeguarding exhibits, however, it cannot assume responsibility for loss of property. Entries are judged against perfection. The judges decisions are Final. In the case of disputes the show chair(s) shall make final decisions.

**TROPHIES AND PLAQUES**, are perpetual, except the educational and novice awards. First, Second and Third place ribbons will be awarded in each class; however, should the judges feel that: First, Second or Third place is not merited, it will be withheld. To receive the CSSA Award two or more educational displays must be entered.

## CACTUS

*Best Cactus* ..... Phillip Corliss Plaque  
*Best Novice Cactus* ..... SDCSS Plaque  
*Best Epiphytic Cactus Plant* .....  
..... William & Ruth Nelson Trophy  
*Best Mammillaria* ..... Elibet Marshall Plaque  
*Best Opuntieae* ..... James & Shirley Berry Trophy

## OTHER SUCCULENTS

*Best Succulent* ..... Ruby Falk Plaque  
*Best Novice* ..... SDCSS Plaque  
*Best Agave* ..... Doris Rake Plaque  
*Best Aloe* ..... Barbara Jeppe Trophy  
*Best Echeveria* ..... Oliver & Sophie Loyland Trophy  
*Best Euphorbia* ..... Russell & Lydia Evans Cup  
*Best Mesembryanthemum* .....  
..... Samuel & Adela Markey Trophy  
*Best Pelargonium or Sarcocaulon* .....  
..... Wilna Johnson Trophy  
*Best Sansevieria* ..... Richard G. Latimer, Sr. Trophy

## CACTI OR SUCCULENTS

*Best Baja Plant* .....  
..... Richard G. Latimer Jr. Memorial Plaque  
*Best Graft* ..... Bob & Suzanne Taylor Trophy  
*Best Mexican Plant in Show* ... Dudley B. Gold Trophy  
*Best Plant From Seed Grown* Tegelberg Family Plaque  
*Best San Diego County Succulent* Julianne Rice Trophy  
*Best Miniature* .... Monte & Mary Woodworth Plaque  
*Best Pachycaul or Caudiciform* .....  
..... H. Warren & Virginia Buckner Trophy  
*Best Succulent Bonsai*... Rudy & Teresita Lime Trophy  
  
*People's Choice Award* .....  
..... Rose D'Attilio Memorial Plaque

## DISPLAYS, EXHIBITS AND HIGH POINTS

*Best Educational Display* ..... CSSA Award  
*Best Exhibit* ..... Reuben Vaughan Plaque II  
*Most Artistic Display* ..... Walter & Hazel Scott Plaque  
*High Points 50 or fewer entries* .....  
..... James & Shirley Berry Trophy  
*Sweepstakes Trophy* Ronald & Marcia Monroe Trophy

**SET UP TIME: Friday, May 31, Noon-9:00 PM, Saturday, June 1, 7:30-8:00 AM TAKE OUT TIME: Sunday, June 2, after 4 PM**

### ❖ JUDGING SCALE—SPECIMENS, COLLECTIONS AND DISPLAYS ❖

Condition 70%, Staging 15%, Size & Maturity 10%, Nomenclature 5%

### ❖ EDUCATIONAL DISPLAY ❖

Two or more entries must be exhibited for CSSA award. Educational Value, 80%, Staging & Originality 20%

### ❖ AWARDS POINT SYSTEM ❖

Divisions I, II and IV, 1<sup>st</sup>-3 pts., 2<sup>nd</sup>-2 pts., 3<sup>rd</sup>-1 pts., Division III, 1<sup>st</sup>-7 pts., 2<sup>nd</sup>-5 pts., 3<sup>rd</sup>-3 pts.  
Division V, 1<sup>st</sup>-12 pts., 2<sup>nd</sup>-10 pts., 3<sup>rd</sup>-8 pts., Plaques and Trophies, 10 pts.

### ❖ SHOW COMMITTEE ❖

Show Chairs Thomas Knapik & Joseph Betzler, Head Clerk Susan Hopkins, Luncheon Pam Badger  
Sales Chair Tom Birt, Sales Managers Tom Birt & Jeff Harris, Refreshments SDCSS and the membership

### ❖ JUDGES ❖

Charles Spotts Lee Phelps Hans Britsch Miles Anderson  
TIEBREAKERS WILL BE JUDGED BY THE HEAD CLERK OR THEIR APPOINTEE

### ❖ THE SAN DIEGO CACTUS AND SUCCULENT SOCIETY ❖

P.O. Box 33181, San Diego, California 92163-3181, is a public service and educational (nonprofit tax exempt) organization.  
Your donations are graciously accepted.

# INDEX TO CLASSES

USE THIS INDEX TO LOOK-UP YOUR PLANT TO ENTER IT IN THE APPROPRIATE CLASS. If your plant is not listed please find a show chair to help decide that class to make your entry. Don't forget that some of the class numbering may have changed this year. You should confirm all the numbering matches this current Plant Entry Classification Schedule. Don't forget that Division VI - Specialities, will have the entries for: San Diego County Succulent, Baja Plant, Mexican Plant, Grafted Succulent, Seed Grown by Exhibitor, Miniature (3 inches and smaller), Pachycaul or Caudiciform, and Succulent Bonsai. *Good Luck!*

<i>Abromeitiella</i>	66	<i>Cotyledon</i>	35	<i>Gasteria</i>	61	Monstrose succulents	68	<i>Rebutia</i>	6
<i>Acanthocalycium</i>	7	<i>Crassula</i>	36	Geophytes not listed elsewhere	59	<i>Myrtillocactus</i>	13	<i>Rhipsalis</i>	22
<i>Adansonia</i>	58	Crested cacti	25	<i>Gerrardanthus</i>	57	<i>Neochilenia</i>	10	<i>Sansevieria</i>	63
<i>Adenia</i>	57	Crested succulents	68	<i>Gonolobus</i>	52	<i>Neolloydia</i>	15	<i>Sarcocaulon</i>	49
<i>Adenium</i>	53	<i>Cynanchum</i>	51	<i>Graptopetalum</i>	38	<i>Neoporteria</i>	10	<i>Sarcophagophilus</i>	50
<i>Adromischus</i>	35	<i>Cyphostemma</i>	54	<i>Greenovia</i>	37	<i>Nolina</i>	64	<i>Sarcostemma</i>	51
<i>Aeonium</i>	37	<i>Dasyliirion</i>	65	<i>Gymnocactus</i>	15	<i>Notocactus</i>	4	<i>Schlumbergera</i>	22
<i>Agave</i>	64	<i>Decarya</i>	30	<i>Gymnocalycium</i>	5	<i>Obregonia</i>	18	<i>Sclerocactus</i>	15
<i>Alluaudia</i>	30	<i>Denmoza</i>	11	<i>Haageocereus</i>	12	<i>Operculicarya</i>	58	<i>Sedum</i>	37
<i>Aloe</i>	60	<i>Deuterochonia</i>	66	<i>Hamatocactus</i>	15	<i>Opuntia</i>	23	<i>Selenicereus</i>	22
<i>Anacampseros</i>	33	<i>Didierea</i>	30	<i>Haworthia</i>	62	<i>Oreocereus</i>	12	<i>Sempervivum</i>	37
<i>Ancistrocactus</i>	15	<i>Dioscorea</i>	59	<i>Hechtia</i>	66	<i>Orostachys</i>	38	<i>Senecio</i>	48
<i>Aporocactus</i>	22	<i>Discocactus</i>	8	<i>Heliocereus</i>	22	<i>Oroya</i>	11	<i>Seyreigia</i>	57
<i>Argyroderma</i>	31	Dish gardens	77	<i>Hesperaloe</i>	64	<i>Ortegocactus</i>	24	<i>Sinningia</i>	59
<i>Ariocarpus</i>	18	<i>Disocactus</i>	22	<i>Hoodia</i>	50	Other genera of cacti	24	<i>Soehrensia</i>	7
Arrangements	77	Displays	86	<i>Horridocactus</i>	10	Other genera of succulent plants	67	<i>Stapelia</i>	50
<i>Arrojadoa</i>	12	<i>Dorstenia</i>	55	<i>Hoya</i>	51	<i>Othonna</i>	48	Stapeliads	50
Artwork	87	<i>Dracaena</i>	65	<i>Huernia</i>	50	<i>Oxalis</i>	67	<i>Stenocactus</i>	21
Asclepiads:	50-52	<i>Dudleya</i>	40	<i>Hylocereus</i>	22	<i>Ibervillea</i>	57	<i>Stenocereus</i>	13
<i>Astroloba</i>	61	<i>Dyckia</i>	66	<i>Idria</i>	56	<i>Ipomoea</i>	59	<i>Strombocactus</i>	18
<i>Astrophytum</i>	19	<i>Echeveria</i>	39	<i>Islaya</i>	10	<i>Jatropha</i>	47	<i>Sulcorebutia</i>	6
<i>Aztekium</i>	18	<i>Echinocactus</i>	21	<i>Kalanchoe</i>	34	<i>Kalanchoe</i>	34	<i>Tacitus</i>	38
<i>Beaucarnea</i>	65	<i>Echinocereus</i>	14	<i>Kedrostis</i>	57	<i>Kleinia</i>	48	<i>Talinum</i>	33
<i>Blossfeldia</i>	1	<i>Echino-</i>		<i>Leuchtenbergia</i>	18	<i>Leuchtenbergia</i>	18	<i>Tephrocactus</i>	23
<i>Bombax</i>	58	<i>fossulocactus</i>	21	<i>Lithops</i>	31	<i>Lithops</i>	31	<i>Thelocactus</i>	15
<i>Borzicactus</i>	11	<i>Echinopsis</i>	7	<i>Lobivia</i>	7	<i>Lobivia</i>	7	<i>Trichocereus</i>	13
<i>Bowiea</i>	59	Educational displays	86	<i>Lomatophyllum</i>	60	<i>Lomatophyllum</i>	60	<i>Trichodiadema</i>	32
<i>Brachystelma</i>	52	<i>Encephalocarpus</i>	18	<i>Maihueunia</i>	23	<i>Maihueunia</i>	23	<i>Tube flowered cereoids</i>	12
Bromeliads	66	<i>Epiphyllum</i>	22	<i>Mamillopsis</i>	17	<i>Mamillopsis</i>	17	<i>Turbincarpus</i>	15
<i>Buiningia</i>	2	Epiphytic cacti	22	<i>Mammillaria</i>		<i>Mammillaria</i>		<i>Tylecodon</i>	35
<i>Bursera</i>	58	<i>Epithelantha</i>	18	<i>Mastocactus</i>	8	<i>Mastocactus</i>	8	<i>Uebelmannia</i>	2
<i>Calibanus</i>	65	<i>Eriosyce</i>	10	<i>Mestoklema</i>	32	<i>Mestoklema</i>	32	Variegated cacti	25
<i>Caralluma</i>	50	<i>Escobaria</i>	16	Minitatures (3 inches & smaller)	83	Minitatures (3 inches & smaller)	83	Variegated succulents	68
Caudiciforms not listed elsewhere	59	<i>Espostoa</i>	12	<i>Monadenium</i>	47	<i>Monadenium</i>	47	<i>Weingartia</i>	7
<i>Cephalocereus</i>	13	Euphorbias from Madagascar	41-43	<i>Monanthes</i>	37	<i>Monanthes</i>	37	Wide flowered cereoids	13
<i>Ceraria</i>	33	Euphorbias from other places	44-46	<i>Monstrose cacti</i>	25	<i>Monstrose cacti</i>	25	<i>Wilcoxia</i>	13
<i>Ceropegia</i>	51	Exhibits	86	<i>Quiabentia</i>	23	<i>Quiabentia</i>	23	<i>Xerosicyos</i>	57
<i>Cissus</i>	54	<i>Fenestraria</i>	31	<i>Quaqua</i>	50	<i>Quaqua</i>	50	<i>Yucca</i>	64
<i>Cleistocactus</i>	12	<i>Ferocactus</i>	20	<i>Raphionacme</i>	52	<i>Raphionacme</i>	52	<i>Zygocactus</i>	22
<i>Cochemiea</i>	17	<i>Ficus</i>	55	<i>Sarcocactus</i>	8	<i>Sarcocactus</i>	8	<i>Zygocactus</i>	22
Collections of cacti	75	<i>Fockea</i>	52	<i>Pterocactus</i>	23	<i>Pterocactus</i>	23	<i>Zygocycos</i>	57
Collections of other succulents	76	<i>Fouquieria</i>	56	<i>Pyrrhocactus</i>	10	<i>Pyrrhocactus</i>	10		
<i>Commiphora</i>	58	<i>Frailea</i>	1						
<i>Conophytum</i>	31								
<i>Copiapoa</i>	9								
<i>Coryphantha</i>	16								