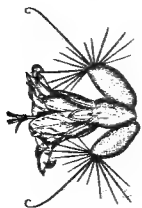


ESPINAS Y FLORES — NEWSLETTER OF THE SAN DIEGO CACTUS AND SUCCULENT SOCIETY, INC.
AFFILIATED WITH THE CACTUS AND SUCCULENT SOCIETY OF AMERICA, VOLUME 36, NUMBER 5 & 6, SATURDAY, MAY 12, 2001 AT 1:00 PM

CACTUS SHOW



San Diego Cactus and Succulent Society

ANNUAL SHOW AND PLANT SALE - JUNE 2 & 3, 2001 - ROOM 101 CASA DEL PRADO, BALBOA PARK

SHOW - SAT., JUNE 2, NOON - 5 PM AND SUN., JUNE 3, 10 AM - 4 PM

SALES - 10 AM - 5 PM SATURDAY AND SUNDAY

FREE SHOW FOR MORE INFO. 619-462-1805, 858-569-8510 OR VISIT US AT SDCSS.COM

NAMAQUALAND AND BEYOND

Brian Kemble is the curator of the Ruth Bancroft Garden in Walnut Creek, CA. As most of you know, his first love is the genus *Aloe*. He also enjoys growing echeverias, agaves, and terrestrial bromeliads and has been doing so, in the bay area, for 25 years.

Brian has visited many North American desert localities including Chihuahuan, Sonoran, and Mojave. Last year he gave us a great program on the rare Agaves of Arizona and northern Mexico. This year, Brian will treat us to a photographic tour of Namaqualand. He is an accomplished photographer and I know his program will be informative and enjoyable.

Please join us on May 12, 2001 at room 101, Casa del Prado, Balboa Park, at 1:00 PM.

Please send your letters, artwork, poetry, Cactus or Succulent of the Month articles, puzzles, comments, or criticisms, etc. to:

Tom Knapik
4669 71street
La Mesa, CA 91941
Phone (619) 462-1805 e-mail eyf2000@aol.com
FAX (858) 569-8510

Newsletter submissions are due before the 14th each month unless other arrangements are made.

Espinas y Flores, the newsletter of the San Diego Cactus and Succulent Society, Incorporated, P.O. Box 33181, San Diego, CA 92163-3181, is published monthly with the exception of a combined May-June issue (11 issues per year). Newsletter circulation is approximately 330, with 20-30 issues going to educational institutions, botanical societies, cactus and succulent nurseries, local publications, related natural history events, exhibits, and other interested groups or individuals upon request. Subscriptions are \$15 per year for bulk mail within the U.S.A.

Opinions stated in the articles and editorials of *Espinas y Flores* are solely the opinions of the authors or editor and do not necessarily represent the opinions of other SDCSS members, the Board of Directors, or the organization in general. All materials submitted to *Espinas y Flores* for possible publication may be edited in form and content. All material in the *Espinas y Flores* may be reprinted by other nonprofit organizations (unless such permission is expressly denied in a note accompanying the material) provided that: proper credit is given to the SDCSS, *Espinas y Flores*, and the author. Please send one copy of the publication containing the reprinted material to the editor. Reproduction in whole or part by any other organization of publication without the permission of the editor is prohibited. Volume 36, Number 5-6, Published May2, 2001.

President's Message...

Hello! If you missed the April meeting, you missed a good one. Ross Shumway (he maintains our web site, sdc&ss.com) gave a talk on *Ariocarpus*, which included a slide show of many plants grown by members. Kelly Griffin presented Aloes of Arabia, which he illustrated by some fine slides. We had a discussion amongst the membership present to address the issue of the recent decline of entries in the Cactus categories at our big show in June. Many ideas were put forth in relation to both the reasons for the decline and possible solutions. The difficulties of both growing show worthy specimens, and transporting them were amongst the prominent concerns. The board appreciates all your input and will work towards possible solutions including having a newsletter article with specific ideas for cultivation and transport. (Joe Quijada, are you there?) If you come up with further concerns or ideas please contact any board member or me. The Meeting was capped with an OUTSTANDING slide show by Gary James on his travels in Ethiopia. This presentation covered not only the plants and scenic landscapes but also interesting historical and cultural information - this is clearly a fascinating country in many ways. Thanks Gary!

As you know our JUNE SHOW and SALE are coming right up! This is our biggest event of the year and we want EVERYONE to participate. There are many ways to help out and it is always lots of fun... We will be providing lunch for all volunteers on both days and I welcome kitchen helpers. We have acquired a second cash register to facilitate sales and this means we need plenty of people to help in the sales area. Contact **TOM BIRT (619) 452-0389**. It would be most helpful to have people sign up for a two to three hour commitment in the sales area so the same people are not tied down all day.... Set up will be all day Friday - look over your collection and find several plants (or more!) to bring in. If you have not shown before, there will be members available to help you with tagging and placing your plants. A plant does not have to be the best to be in the show - if it is clean of bugs and presentable, please bring it along - the whole idea of the show is to educate the public as to the beauty and diversity of these great plants - **PARTICIPATE! I WANT TO SEE SOME OF THOSE FINE CACTI YOU HAVE BEEN WINNING AT THE BENEFIT DRAWING!**

I look forward to seeing you all at the May meeting... Pam Badger (619) 589-1223
pambadge@earthlink.net

**Earth
Day
2001**



What a beautiful day, the sun came out after the crazy Saturday storm (I brought a picture of the hail piling up on our succulents in Spring Valley, thanks to the digital camera) Our booth was beautiful - full of flowering cactus and succulents fat with the spring showers. Special thanks to vendors and helpers: Lee Badger, Tom De Merritt, Phil Favell, Jeff Harris, Joe Kraatz, Spencer Maze, Gary Noel, Si Osgrove, Herb Stern... Thanks to members Curt, Dan, Cindy and whoever else stopped by ... we were very busy all day and signed up several new members!

CALENDAR * OF UPCOMING EVENTS

➤ **MAY**

— 2001 —

- 12-13 San Diego Epiphyllum Society Annual Show and Sale, Sat. 10:00AM - 4:00PM, Sun 10:00AM - 5:00PM, Casa del Prado Rm. 101, admission is free.
12-13 San Jose Cactus and Succulent Society Show and Sale. Call Bill Kurtz for info. at 408-243-3692
19 Carmichael Cactus and Succulent Society Show. For info call Sam Price at 916-485-9158
19-20 Gates Cactus and Succulent Society Show. Call 909-243-5940 or email amber.jones@ucr.edu.
19 Cuyamaca College, is having a Spring Garden Festival/Urban Forest Field Day from 9:00AM-3:00PM, please call 619-232-9763, and leave a message for more info.
26-27 Fresno C&SS Show, CA. Info Sue Haffner 209-292-5624 or e-mail: sueh@csufresno.edu

➤ **JUNE — SDCSS SHOW AND SALE — GET THOSE PLANTS READY!**

- 2-3 SDCSS Spring Show and Sale - start thinking now about those show plants. Let's have a great show ... bring in those cactus specimens! Show helpers call 619-462-1805 and sales helpers call 858-452-0389
24-29 CSSA 2001 Pre-Convention Tour to Anza-Borrego Desert State Park and Joshua Tree National Park. For details contact Dan Mahr by e-mail at: dmahr@entomology.wisc.edu Bob Barth at b.barth@mail.utexas.edu; or Lee Miller at leemiller@erols.com
30-1 CSSA Show & Sale, Huntington Botanical Gardens, 1151 Oxford Rd., San Marino CA.

➤ **JULY — SUPPORT THE NEXT CALIFORNIA CACTUS AND SUCCULENT CONVENTION.**

- 1-6 2001 CSSA Convention *PLAN NOW TO ATTEND!*, Warner Center Marriott, 21850 Oxnard St, Woodland Hills CA. This is the correct date! See www.cssainc.org/convent.html for details

➤ **AUGUST**

- 18-19 Inter-City Show & Sale contact Dick Hulett for more Info., 310-832-2262 or Airobatic@aol.com

➤ **SEPTEMBER**

- 1 Huntington Symposium, Huntington Botanical Gardens, 1151 Oxford Rd., San Marino CA. Info. 626-405-2160 or 2277



FYI FYI FOR YOUR INFORMATION FYI FYI

SHOW & SALE & SHOW & SALE & SHOW & SALE & SHOW & SALE & SHOW & SALE & SHOW

⇒ Please mark your calendars for June 1, 2, and 3, *GET READY—ITS SHOW TIME AGAIN!* Please set aside some time to help out with the show set-up, and tear down. Call **Tom Knapik** (619-462-1805) to help with the Show or **Tom Birt** (858-452-0389) to help with the Sale.

The SDCSS Show schedule has changed this year: read the schedule and rules carefully. These changes should speed up the judging and take some wear and tear off of the show helpers. Please pick up your show tags at the next meeting and have them filled out when you come in on Friday June 2. If you need help there will be folks to assist you. If you have questions please call **Joey** or **Tom** about entries. More supplies will be available at set-up time including more tags and an alphabetical listing of the genera related.

Sales Questions should be directed to **Tom Birt** (phone above). If you want to sale plants please contact him immediately to get a sales contract and arrange for bar codes for your plants. Tom needs advance notice and there is a deadline of May 27 for participation.

Please **bring in those plants** to display! Did you know we have a Cactus Deficite - Please bring in those cacti, if not to win big at least to share with the thousands of folks that see our show. There are a lot of people that just come to see what a cactus looks like. We need you to **enter plants** to show San Diego what a great diversity of succulents that we are enthusiastic about. We have special entry cards to help out those of you that have not shown many plants. The cards are **green** cards. For those with a bit more experience there are **yellow** cards and for commercial growers and advanced participants there are **blue** cards. See the insert for more details.

⇒ For those of you that remember **Barbara Jeppe**, she passed away recently. She was an extraordinary botanical illustrator that travelled all over South Africa illustrating plants. **Warren Buckner**, past president of SDCSS, said that she spoke to our club twice in the past and was accompanied by Cynthia Giddy. What an awesome program that must have been.

The Los Angeles Cactus & Succulent Society is hosting:

CSSA's Convention for 2001

Sunday, July 1 through Friday, July 6

Plant & Book Sales

Renowned Speakers

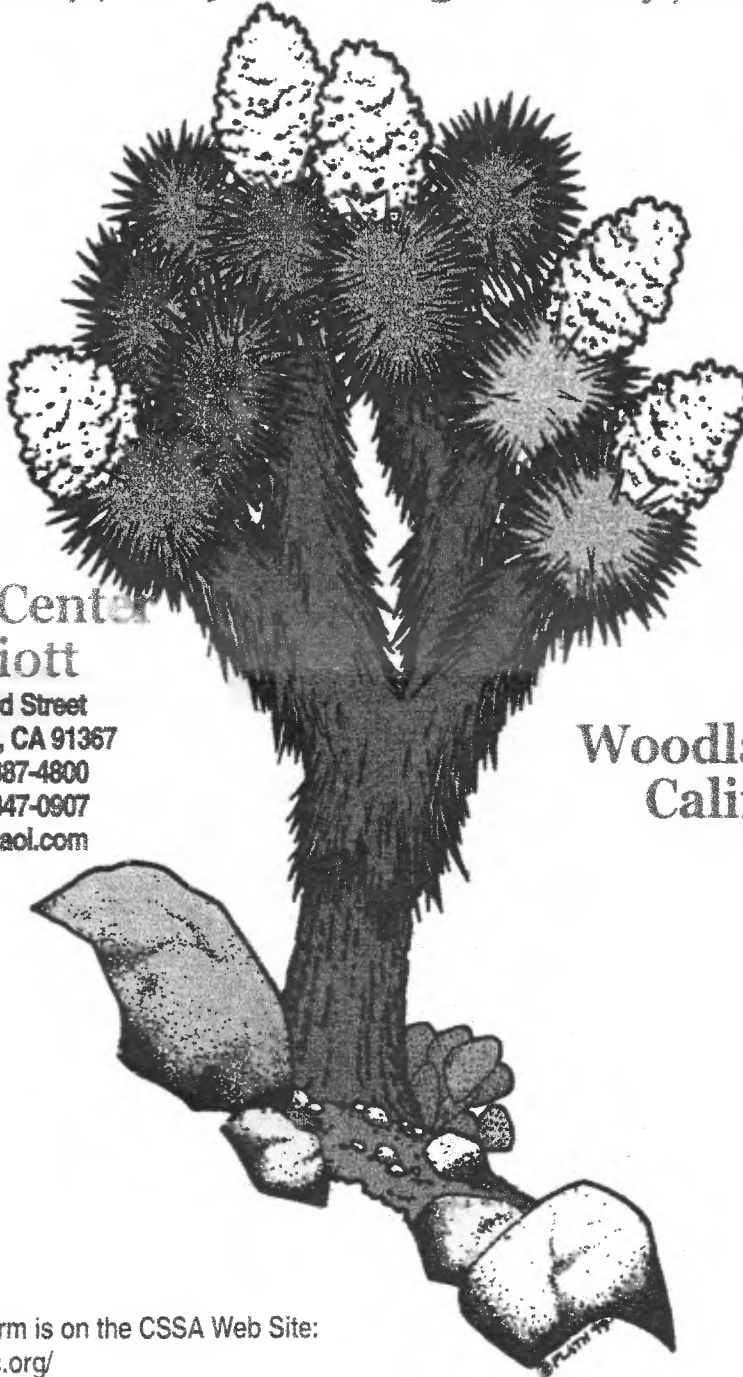
**Warner Center
Marriott**

21850 Oxnard Street
Woodland Hills, CA 91367
Phone: 818 887-4800
FAX: 818 347-0907
wcmarrlott@aol.com

**Woodland Hills
California**

Mid-week Tours

Pre- & Post-Tours



Our registration form is on the CSSA Web Site:
<http://www.cssainc.org/>

Information: Art Chavaz (Host Chairman)
818 363-3432 or color@gte.net

Information: LoWilla Wilson (CSSA Secretary)
or lowilla.wilson@worldnet.att.net

Registration: Mindy Fusaro (CSSA Treasurer)
(775) 751-1320 treasurer@cssainc.org

Duke Benadom (CSSA Convention Chairman)
DukeBenadom@earthlink.net
DukeB@advancedbionics.com

MICROPUNTIA

By J. Menzel

While studying the various papers of the cactus experts on *Micropuntia* the famous and fundamental question "To Be, Or Not To Be" arises with regard to this genus. L. Benson denies the existence of the genus *Micropuntia* which first had been introduced by Daston in 1946, and assigned its plants to *Opuntia* subgenus *Cylindropuntia*, i.e. to the chollas or more narrowly viewed to what others call *Corynopuntia*.

C. Backeberg defended the legitimacy of this genus strongly by pointing out the dissimilarities from *Corynopuntia* which these plants share: short, thin +/- cylindrical joints, typically no glochids, very tuberous roots and purple flowers.

There is even more confusion: Benson claims there is solely *Opuntia pulchella* (Sand cholla) and all the other proposed species are only its juvenile forms, whereas Backeberg - insisting on the genus with about 6 species - counts just this species, which was first described by Engelmann in 1863, as belonging to the genus *Corynopuntia*.

Sticking to the point of view of Daston and Backeberg and furthermore including the *Opuntia pulchella* - even as type species - to the genus *Micropuntia* as I do, this group of plants can be described as follows:

Tiny solitary stems or low shrubs, 4-5'' tall and up to 8'' in diameter, arising from tubers 1-5'' thick; tubers have bristly areoles in the upper part, out of which they can start new growth; stems are cylindroid to club-shaped with +/- low tubercles; spines 10-15 per areole, minute to 2'' long, whitish, brown (black), longer ones flexibel and sometimes flattened; flowers 1.5'' in diameter, (light) purple; fruit covered by +/- soft spines; seeds bone-white, lentil- or pillbox-shaped.

The habitat of this genus is confined almost entirely to the State of Nevada, expanded only by a few localities in Western Utah and rather uncertain ones in Northwestern Arizona and Eastern California. In this area you might find the following species from west to east:

Mop. pulchella (Hawthorne, Pyramid Lake, Austin, NV)

Mop. gracilicylindrica (Warm Springs, NV)

Mop. pygmaea (Black Rock, NV)

Mop. barkleyana (Baker, NV)

Mop. tuberculosirhopalica (west. Millard Co, Ut)

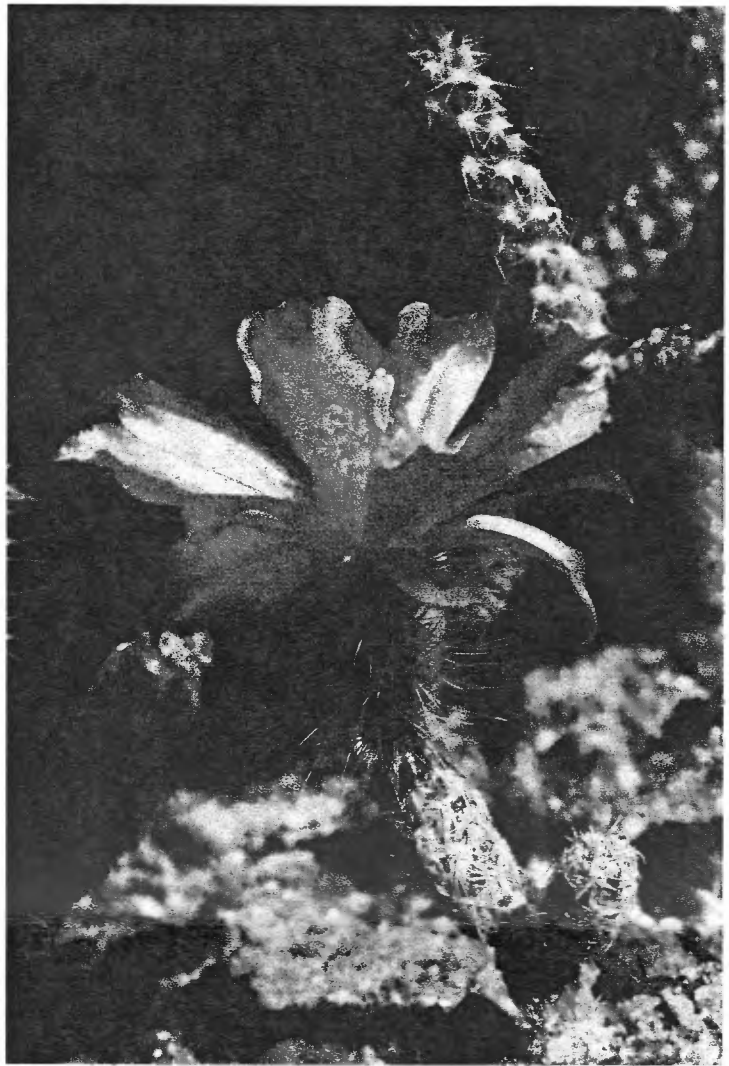
Other proposed species:

Mop. brachyrhopalica, *spectatissima*, *wiegandii*, *gigantea*

I have only encountered the first five species in the wild and must say that they differ markedly from each other. Benson had never seen them in their natural habitat when he claimed that they are only juvenile forms of *Opuntia pulchella*. Otherwise, he would have realized that the so-called juvenile forms never occur mixed but only separated in colonies 30 - 100 miles apart. And how can it be that these “juvenile” forms have distinct seed shapes and still look different from each other after having grown grafted for several years?

In cultivation they need full sun and are easy to handle if grafted on small opuntias like *Opuntia fragilis*. Rooted cuttings or seedlings should be kept in deep containers, in well drained mineral soil and watered only in spring. Grafted and even on their own roots the plants tend to grow more profusely in cultivation than in their natural habitat, where they

not only develop shorter joints but drop most of them due to drought in the second half of the year. Seeds germinate readily within 2 or 3 days but should be weighted down for several days to help the fast growing root (4” in the first week!) to penetrate into the soil. To prevent rot it is recommended to have the soil dry out almost completely 1.5-2 weeks after germination followed by only occasional watering from the bottom.



Micropuntia gracilicylindrica

References:

Lyman BENSON, “The *Opuntia pulchella* Complex”. *Cactus & Succulent Journal* 29: 19-31

Lyman BENSON, “The Cacti of the United States and Canada”, 374-376

Curt BACKEBERG, “*Die Cactaceae*”, 365-370

Curt BACKEBERG, “*Cactus Lexicon*”

SUCCULENT GENERA OF THE COMMELINACEAE

BY JOYCE BUCKNER

The plant family Commelinaceae, commonly known as the Wandering Jew or Spiderwort Family, consists of about forty genera with approximately 700 species of herbaceous, mostly perennial plants from subtropical and tropical areas around the world. The eight genera *Aneilema*, *Commelina*, *Cyanotis*, *Dichorisandra*, *Rhoeo*, *Setcreasea*, *Tradescantia*, & *Zebrina* comprise the most cultivated or "ornamental" of this Family. Some species qualify as true succulents; others are best described as semi-succulent or tropical succulents. Most of the species occurring in the remaining taxa are referred to as herbs . . . wildflowers . . . or "weeds." Few demonstrate succulent characteristics.

Three species of Commelinaceae (all from Africa) have medicinal uses. An extract of leaves & stems from *Aneilema beninense* is used as a laxative. Decoctions from the roots of *Commelina africana* and *Cyanotis speciosa* are used for treating menstrual cramps and to facilitate conception.

The genus *Anthericopsis* (endemic to Somalia, Ethiopia, Kenya, Tanzania, Mozambique, Malawi, Zambia, & Zaire) is described as, "Geophytes with tubers at the ends of thin, wiry roots," which sounds like a succulent, but I'm hesitant to make that claim without touching, seeing, and feeling a real live plant.

Flowers of the Commelinaceae are distinguishable by their three green sepals and three colored petals. Although these flowers are generally diminutive, many bloom in brilliant hues of blue - a color rarely found in succulent plants. Sunset's Western Garden Book states it quite succinctly, "Flowers are interesting rather than beautiful."

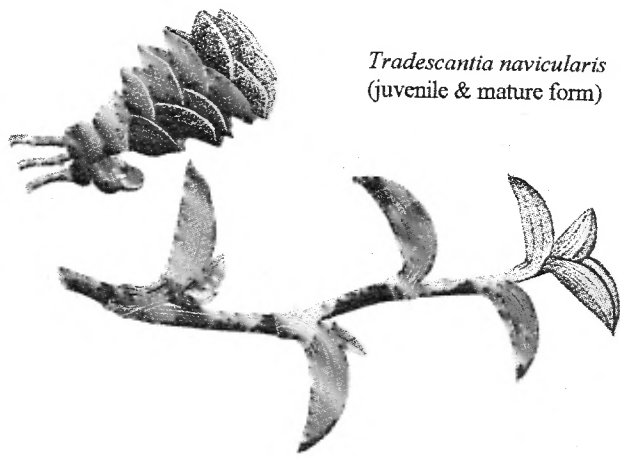
Several of the most commonly known species are fully accepted members of more than one genus - so much so, that the genus "*Synonymous*" should be included. Alas, this

seems typical of any plant family which has been commercially produced and marketed for many years - genus, species and the common names all are hybridized into one big blur!

Brilliant and unusual leaf colors and patterns are a typical Commelinaceae characteristic - especially those that are commercially available. The **adaxial (top side of leaf)** of several popular ornamental species (*Rhoeo*, *Tradescantia* & *Zebrina*) is brightly banded or striped in multiple shades of green, yellow, cream, pink, silver, purple, and carmine red. The **abaxial (bottom side of leaf)** of these same plants present a contrasting (and often totally unmatching) shade of solid rich purple, or velvety brown, or red stripes . . . or fuzzy light green. This contrast is often so mismatched and unnatural in appearance that they are often mistaken for plastic or silk plants.

Tradescantia, the most popular of the "commels", are indigenous to the USA, Mexico, Central & South America. *Tradescantia* is named after John Tradescant (1608-62), English gardener to Charles I. Most tradescantias are commonly referred to as "Wandering Jews" or "Wandering Sailors". *Tradescantia virginiana* is known as the spiderwort. All tradescantias exhibit some succulent characteristics, such as rooting from cuttings. Still I have some reservations about recognizing such a thin-leafed pansy plant like *T. zebrina* (Syn, *Zebrina pendula*) as a true succulent. Gordon Rowley in his book **Name that Succulent** states that all species of *Tradescantia* are succulent - a view which is not necessarily embraced by other botanists.

There are about twenty species and at least another twenty + subspecies, varieties, or hybrids in the genus *Tradescantia*. An entire rainbow of color, textures and patterns can be found in the leaves of this genus. Flowers, too, although quite small, present a full spectrum of color.



Tradescantia navicularis
(juvenile & mature form)

Tradescantia navicularis (boat shaped), a native of Peru, has thick fleshy, very succulent leaves and favors bright light and a drier well-draining soil mix. I have one "volunteer" that thrives in a pot with *Adromiscus cristatus* – a plant that we water less than ten times a year. It thrives in full sun on the coast – some summer shade is needed if further inland. Cut back to keep in the juvenile stage, as the adult stage is rampant with long internodes. Leaf tops are a matte drab olive green; stems and under-leaf are a reddish purple due to some very intricately detailed pin striping. Flowers range from hot pink magenta to light purple, although I usually keep it cut back, not allowing it to bloom. A lovely, easy plant.



Tradescantia sillamontana

I have yet to keep *Tradescantia sillamontana*, a native of Belize, Guatemala & Mexico, alive for more than six months. After reading several descriptions of this plant in various books, I realize that I have been crowding and drowning these soft little furry guys. Their delicate looks are deceiving – from now on they can get their own water!! In the future I'll try morning sun, a larger pot with sandy slightly richer soil, and allowing the pot to get almost dry before watering.

One of my favorites, *Cyanotis somaliensis*, does best in a shady totally neglected spot of the garden. I completely forget about it for months at a time and it couldn't be happier. Initially the brilliant blue flowers and the succulent green leaves covered with fine white hair attracted me to this cute little native of Somalia.

Setcreasea pallida, commonly referred to as Purple Heart, is a colorful native of tropical Mexico. Purple leaves are rather long & thin and covered with fine long hairs on both sides. Brilliant pink pin stripes on the abaxial add intensity to the purple. Likes bright light but not full sun. Small pinkish purple flowers. Cut back after blooming.

Rhoeo spathacea (syn. *R. discolor*) presents with a rosette of bromeliad-like leaves and an inflorescence with boat-shaped bracts, giving to the common names: Moses in the Boat, or Boat Lily. A variegated variety of this species, displaying four to five different colors on its leaves is often referred to as the Rainbow plant.

The silver banded purple leaves of *Zebrina pendula* (formerly *Tradescantia zebrina* or Silvery Wandering Jew) make it currently the most popular hanging plant in this Family. Other popular Commelinaceae include *Gibasis schiedeana* (Tahitian Bridal Veil), *Callisia repens* (Turtle Vine or Bolivian Jew), *Callisia fragrans*, *Tradescantia flumin variegata* (Variegated Wandering Jew), and *Dichorisanthra thyrsoiflora* (Blue Ginger of Brazil).

References:

Illustrations by Victoria Goaman, Judith Dunkley & Christabel King from: ● V.H. Heywood, **Flowering Plants of the World**, 1978, Mayflower Books, New York - USA.

● Alfred Graf, **Hortica**, 1992, Roehrs Co., New Jersey.

● Gordon Rowley, **Name that Succulent**, 1980, Stanley Thornes Ltd, Great Britain.

● Mats Thulin, **Flora of Somalia #4**, 1995, Royal Botanic Gardens, Kew-England.

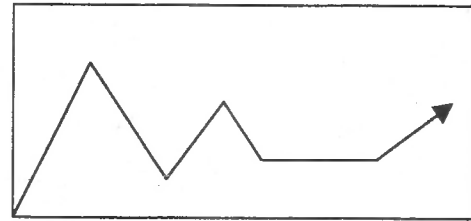
● Ben-Erik van Wyk & Nigel Gericke, **People's Plants - A Guide to Useful Plants of Southern Africa**, 2000, Briza Publications, Pretoria - S.A.

● Jan Pribyl, **Indoor Plants**, 1995, Magna Books. **Sunset Western Garden Book**, 1997. Menlo Park USA.

WHAT'S THE STATUS?

by Chris Miller and Tom Knapik

Topic #14: San Diego Cactus and Succulent Show



We thought you might appreciate some statistics on our show last year. Chris did a remarkable job tallying the results and now they are published here for all to see. Our cactus division has been shrinking and there has been a lot of discussion as to how to improve that aspect of the show. Perhaps the information listed below will help. Chris writes:

As promised during the discussion at the April meeting, below is a listing of the number of cactus entered in last June's Show. There are a total of 92 entries, which in relationship to the total show entries of 663, is only 14% of the total entries. As I stated at the meeting, there were whole Classes not represented. A total of 40 people competed in the three categories. The most plants brought in by an individual were 54, the least 1. Since every plant counts, everyone's participation adds value to the show. Please take a look at your collection and see if you have some of these missing plants to show this year.

| CLASS | SIZE | CATEGORY | # ENTRIES |
|-------|--------|----------|-----------|
| | | | |
| 1 | A ALL | | 0 |
| | B ALL | | 0 |
| 2 | A ALL | | 0 |
| | B NOV | | 0 |
| | B OPEN | | 1 |
| | B COMM | | 0 |
| 3 | A NOV | | 0 |
| | A OPEN | | 1 |
| | A COMM | | 0 |
| | B NOV | | 4 |
| | B OPEN | | 2 |
| | B COMM | | 0 |
| | A NOV | | 1 |
| | A OPEN | | 0 |
| 4 | A COMM | | 0 |
| | B NOV | | 0 |
| | B OPEN | | 3 |
| | B COMM | | 0 |
| 5 | A NOV | | 1 |
| | A OPEN | | 2 |
| | A COMM | | 1 |
| | B NOV | | 2 |
| | B OPEN | | 0 |
| | B COMM | | 0 |
| 6 | A NOV | | 4 |
| | A OPEN | | 0 |
| | A COMM | | 3 |
| | B NOV | | 2 |
| | B OPEN | | 5 |
| | B C | | 0 |
| 7 | A NOV | | 0 |
| | A OPEN | | 0 |
| | A COMM | | 1 |
| | B NOV | | 1 |
| | B OPEN | | 2 |
| | B COMM | | 0 |

The hand written numbers are the totals for each class.

| | | |
|----|--------|---|
| 8 | A NOV | 1 |
| | A OPEN | 1 |
| | A COMM | 0 |
| 9 | B NOV | 1 |
| | B OPEN | 2 |
| 10 | B COMM | 1 |
| | A NOV | 2 |
| | A OPEN | 0 |
| | A COMM | 0 |
| 11 | B ALL | 0 |
| | A NOV | 1 |
| | A OPEN | 0 |
| | A COMM | 0 |
| | B NOV | 0 |
| 12 | B OPEN | 5 |
| | B COMM | 0 |
| | A NOV | 0 |
| | A OPEN | 1 |
| 13 | A COMM | 0 |
| | B NOV | 2 |
| | B OPEN | 1 |
| 14 | B COMM | 1 |
| | A NOV | 1 |
| | A OPEN | 1 |
| | A COMM | 0 |
| | B NOV | 1 |
| 15 | B OPEN | 0 |
| | B COMM | 2 |
| | A NOV | 0 |
| | A OPEN | 3 |
| 16 | A COMM | 1 |
| | B NOV | 1 |
| | B OPEN | 2 |
| | B COMM | 0 |

| CLASS | SIZE | CATEGORY | # ENTRIES |
|--|--------|----------|-----------|
| | | | |
| 15 | A NOV | | 4 |
| | A OPEN | | 0 |
| | A COMM | | 0 |
| | B NOV | | 0 |
| | B OPEN | | 1 |
| | B COMM | | 0 |
| <i>Gymnocactus, Hamatocactus, Neolloydia, Pediocactus, Sclerocactus, Thelocactus, Turbinicarpus, Ancistrocactus, etc</i> | | | |
| 16 | A NOV | | 0 |
| | A OPEN | | 0 |
| | A COMM | | 2 |
| | B NOV | | 0 |
| | B OPEN | | 2 |
| | B COMM | | 1 |
| <i>Coryphantha, Escobaria</i> | | | |
| 17 | A NOV | | 2 |
| | A OPEN | | 2 |
| | A COMM | | 6 |
| | B NOV | | 6 |
| | B OPEN | | 9 |
| | B COMM | | 4 |
| <i>Mammillaria</i> and allies: Both single and multiple | | | |
| 18 | A NOV | | 4 |
| | A OPEN | | 5 |
| | A COMM | | 4 |
| | B NOV | | 0 |
| | B OPEN | | 1 |
| | B COMM | | 2 |
| <i>Ariocarpus, Obregonia, Strombocactus, Aztekium, Epithelantha, Pelecyphora</i> | | | |
| 19 | A NOV | | 1 |
| | A OPEN | | 0 |
| | A COMM | | 2 |
| | B NOV | | 0 |
| | B OPEN | | 3 |
| | B COMM | | 0 |
| <i>Astrophytum</i> | | | |

| | | | |
|---|--------|--|---|
| 20 | A NOV | | 0 |
| | A OPEN | | 1 |
| | A COMM | | 0 |
| | B NOV | | 3 |
| | B OPEN | | 0 |
| | B COMM | | 1 |
| <i>Ferocactus</i> | | | |
| 21 | A NOV | | 0 |
| | A OPEN | | 2 |
| | A COMM | | 0 |
| | B NOV | | 0 |
| | B OPEN | | 2 |
| | B COMM | | 0 |
| <i>Echinocactus, Echinofossulocactus, Stenocactus</i> | | | |
| 22 | A ALL | | 0 |
| | B NOV | | 2 |
| | B OPEN | | 1 |
| | B COMM | | 1 |
| EPIPHYTIC CACTI: <i>Selenicereus, Hylocereus, Heliocereus, Aporocactus, Epiphyllum, Disocactus, Rhipsalis, Schlumbergera, etc</i> | | | |
| 23 | A NOV | | 2 |
| | A OPEN | | 3 |
| | A COMM | | 3 |
| | B NOV | | 1 |
| | B OPEN | | 2 |
| | B COMM | | 1 |
| <i>Pereskia, Opuntia, Tephrocactus, Pterocactus, Quiabentia, Maihueira, etc</i> | | | |
| 24 | A ALL | | 0 |
| | B NOV | | 0 |
| | B OPEN | | 2 |
| | B COMM | | 0 |
| Other genera of cacti | | | |
| 25 | A NOV | | 3 |
| | A OPEN | | 4 |
| | A COMM | | 5 |
| | B NOV | | 4 |
| | B OPEN | | 1 |
| | B COMM | | 3 |
| CRESTED, MONSTROSE & VARIEGATED CACTI | | | |

I want to thank Chris Miller for her hard work on this data. Please put it to use. The show and sale is right around the corner and we all need to get ready. If you won a trophy last year please have it engraved with your name, using the same font, and bring it in to our **May meeting**. Entry cards for your plants will be available at the meeting as well. It's a great idea to have them filled out and a list of your show plants **before** bringing them to the show. Also, Joe Quijada told me that once he selects his show plants, he then cut a hole in cardboard that matches the pot and then fits that into a box. Even taking these steps it is still a good idea to bring some top dressing and tweezers.

The show schedule is printed in this edition and we are sticking with some of the changes we made last year. To recap, the specialty division IV has trophy awards that have been donated over the years. If you wish to enter your plant in one of these categories, it will **not** be considered for another division trophy. For example, if you have a fantastic *Mammillaria* from Baja, you need to decide which trophy, best *Mammillaria* or best Mexican Plant you want your plant to be eligible to win because, it can not be both. We do this to simplify the judging process, which takes hours. With more than 650 entries last year, I hope we can grow in size without being limited by the judging time.

On Friday June 1, there will be members helping unload cars of those who would like the help. Also, please bring in those empty boxes for our sales area. If you are interested in selling please contact Tom Birt our Sales Chair. You must obtain a bar code number before the deadline or you will not be able to sell at our event. We have the best percentage around and with another register and credit cards accepted, sale should be **HOT!** As our president mentioned, we need your help and participation to make this a huge success. We heaps of volunteers for security, set-up, tear-down, cashing, maintaining a club table, etc..

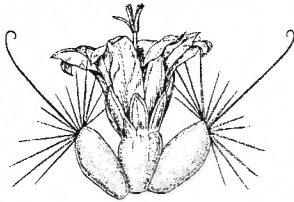
WE NEED YOU! Tom Knapik

Issue Highlights

May speaker Brian Kemble...2
President's Message and Earth Day...3
Calendar & For Your Information...4
Micropuntia 6,7 Commelinaceae...8,9
What's the Status #14...10,11

NONPROFIT ORG.
U.S. POSTAGE
PAID
SAN DIEGO, CA
PERMIT NO. 737

The San Diego Cactus & Succulent Society, Inc.
P.O. Box 33181, San Diego, CA 92163-3181



Please check the top line of your label for, year/month
your membership expires. If the date is getting close -
PLEASE RENEW. THANKS for your help.



ESPINAS Y FLORES

Editors: Tom Knapik - 619-462-1805
Joey Betzler - 858-569-8510
Mail to: 4669 71 St., La Mesa, CA 91941
call for fax or e-mail eyf2000@aol.com

San Diego Cactus and Succulent Society, Inc.

2001 Executive Board Members

OFFICERS

President - Pam Badger
619-589-1223
Vice Pres.- Jeff Harris
619-294-5708
Secretary - Laura De Merritt
858-270-5544
Treasurer - George Plaisted
619-583-9551

DIRECTORS

Lee Badger
619-589-1223
Ed DeLollis
760-945-7892
Joe Kraatz
760 758-7042
Spencer Maze
858-454-1870
Terry Parr
619-460-9111

EX OFFICIO

Immediate Past President
- Tom De Merritt
858-270-5544

Kelly Parrott

SDCSS Volunteers on Standing Committees and Sub-Committees

Conservation:

Joey Betzler and Kelly Griffin

Education and Exhibits:

Brag Table - Shirley Berry
and Kay Quijada

Plants of the Month - Jeff Harris
and Lee Badger

Summer Show - Tom Knapik, J.

Betzler and Kay Quijada

Winter Show - Ed DeLollis

History: Terry Parr

Liaison:

Balboa Park Desert Garden-

Susan Hopkins

CSSA Affiliate Rep. -

Kelly Griffin

Quail Botanic Gardens -

Phylis Flechsig

San Diego Botanic Garden

Foundation - George Plaisted

San Diego Floral Association -

Elizabeth Glover

S. D. Wild Animal Park's Baja and

Succulent Collections - J. Betzler

Library:

Tom Birt and Cynthia Santorini

Membership:

Joey Betzler (858-569-8510), Tom
De Merritt

Mailing:

Pam Badger and Jeff Harris

Plant and Seed Exchange:

Plants - Michele Heckathorn and Sara
Schell

Seeds - Kelly Griffin

Plant Sales and Supplies:

Annual Sales - Tom Birt

Auction and Holiday Plants - L. Badger,
and Tom DeMerritt

Benefit Table - Lee Badger

Monthly Plant Sales - Jeff Harris and

Joe Kraatz

Monthly Supply Sales - George and Jerry
Plaisted

Publicity: Tom DeMerritt and Stan Yalof

Programs: Kelly Griffin (760-942-4866)

Reception:

Ethel Standish

Regalement:

Monthly - Rudy Lime and Stefy Mangold

Picnic - Laura and Tom DeMerritt

The SAN DIEGO CACTUS AND SUCCULENT SOCIETY, INC. is open to all persons interested in growing cacti and other succulent plants. Meetings are held the second Saturday of each month (except June, Sept. and Dec.) at 1:00 PM in room 101, Casa del Prado, Balboa Park. Executive Board meetings are open to all members; call any officer or director for the time and location. Annual dues are \$15.00 per single member per year, \$5.00 for each additional (associate) member within the same household. Single copies of *Espinas y Flores* are \$2.00 per copy sent within the USA; foreign subscriptions are \$30.00. Affiliated with the CACTUS AND SUCCULENT SOCIETY OF AMERICA, INC. The *New* SDCSS Web Page is: SDCSS.COM - please take a look and give feedback to the webmaster.