

Espinas y Flores

Newsletter of the San Diego Cactus and Succulent Society, Inc.
Affiliated with the Cactus and Succulent Society of America
Volume 35, Number 2, Saturday, February 12, 2000 at 1:00 PM



Jim Berry

Thailand

In January of 1998, Pamela Koide and Wayne Schuster were guests of the Royal Family of Thailand. They were invited to consult on the bromeliad growing techniques at the Mae Fah Luang Foundation at Doi Tung. Her Royal Highness the Princess Mother, Princess Sri Nagarinda, initiated the Doi Tung Development Project in 1988.

Pamela and Wayne were fortunate to witness firsthand the remarkable achievements of this Royal Project. In 8 short years 150 square kilometers were reforested with a mix of native trees and economic forests of coffee, macadamia and chestnut. The beautiful display gardens at Doi Tung were completed and now have more than 500,000 visitors per year. Cottage industries were developed to support the growing populations. These have included sa paper making, basket weaving, textile weaving, an anthurium and cymbidium cut flower farm, and a large tissue culture facility for the propagation of orchids, banana and sugar cane. Opium production has completely disappeared within the project area and a rehabilitation program for drug addiction has been started and the success rates are 99 percent recovery. The per capita income of the hill tribes' people has increased seven fold from 3,700 baht per year to 21,000 baht and is projected to increase to 30,000 baht by the year 2002.

In her slide show, Pam will show the Bromeliad Collection at the Singapore Botanic Gardens, the Doi Tung Development Project, and finally the Nong Nooch Tropical Gardens, and other living collections in Southern Thailand.

Come, catch a glimpse of some exotic succulents during this special presentation Saturday, February 8, 2000, Casa Del Prado, Room 101, Balboa Park.

Cover picture: Our club mourns the loss of Jim Berry. This issue is dedicated to him. Please see the tribute on page 5.

Please send your letters, artwork, poetry, puzzles, comments or criticisms, Cactus and other Succulent of the Month articles, etc... to;

Tom Knapik 4669 71 street, La Mesa, CA 91941

Phone 619-462-1805 Fax 858-569-8510 E-mail eyf2000@aol.com

Newsletter submissions are due before the 14th each month, unless other arrangements are made

Espinas y Flores, the newsletter of the San Diego Cactus and Succulent Society, Incorporated, P.O. Box 33181, San Diego, CA 92163-3181, is published monthly with the exception of a combined May-June issue (11 issues per year). Newsletter circulation is approximately 350, with an additional 20-30 issues going to educational institutions, botanical societies, cactus and succulent nurseries, local publications, related natural history events, exhibits, and other interested groups or individuals upon request. Subscriptions are \$15 per year for bulk mail within the U.S.A.

Opinions stated in the articles and editorials of *Espinas y Flores* are solely the opinions of the authors or editor and do not necessarily represent the opinions of other SDCSS members, the Board of Directors, or the organization in general. All materials submitted to *Espinas y Flores* for possible publication may be edited in form and content. All material in the *Espinas y Flores* may be reprinted by other nonprofit organizations (unless such permission is expressly denied in a note accompanying the material) provided that: proper credit is given to the SDCSS, *Espinas y Flores*, and the author. Please send one copy of the publication containing the reprinted material to the editor. Reproduction in whole or part by any other organization of publication without the permission of the editor is prohibited. Volume 35, Number 2, Published February 2, 2000.



PRESIDENT'S MESSAGE FOR FEBRUARY 2000



The most significant event for the club was our third annual Winter Show and Sale, intended to exhibit the plants not always seen in their glory. Again, the show chair Ed DeLollis stepped up to the plate and hit a home run, as did Tom Birt as Sales Chair. The show was a success by all measures. People had fun and everything went smoothly. For a day that ran from 10:00 AM to 4:00 PM, the effort wasn't too taxing as the summer show tends to be. It was a leisurely day for all. Pam Badger organized a great luncheon for all.

Steven Hammer's program featuring the genus *Conophytum* was superb and was aptly suited for the theme of the winter plant show.

I cannot thank enough, each and every hero and heroine of the day but just to list a few... Tom Birt who spent over 20 hours programming the club's electronic cash register has done an excellent job in his write-up below, please refer to this for more detail on the participants. Carol Jean Wolcott, Michelle Heckathorn, Collette Parr, and Joe Kraatz helped conduct the most flawless cash register in SDCSS History.

The sale grossed \$5,262.00 and after taxes were subtracted we added better than \$ 1,000.00 to the club's coffers. That is a significant amount! Herb Stern (our treasurer) as always, gave extended effort reconciling the checks to the vendors and made a detailed report for the event.

The show's exhibitors have to be mentioned as hidden heroes for the display plants they graciously shared. The effort to bring these prizes in is monumental. Camille and Richard Horak, Steve and Rowena Southwell, Rudy Lime, Lee Badger, Gary and Bobbie Noel, Dylan Hannon, Jeff Harris just to name a few. Apologies to those I missed.

Lastly, many thanks to the vendors who provide all of their knowledge and effort in participating. Incidentally, any SDCSS member can sell plants at our meetings or shows with advance notice to the sales chair for that event, and some other requirements. Although we require bar code tags, a certain level of quality and a liability contract has to be met as well. We would love to include as many members in this function as we can.

Sincerely, **Thomas De Merritt**

TEAMWORK MADE THE WINTER SHOW AND SALE FUN

The Winter Show and Sale was a great success. The sales were the highest volume we've ever had for this annual event. The vendors (excluding one) were cooperative and a pleasure to have participate in the first major succulent plant sale in the country this year.

The overall quality and variety of both plants and ceramics were up to their usual high standard. Despite the short time after the holiday season, the attendance was at a normal level thanks to many factors: Good weather, Tom DeMerritt's thorough work of contacting the various media sources, and Joe Kraatz's posters strategically placed around the Casa del Prado.

I'd like to thank the people who worked long and hard at the cash register, bringing in boxes and packing material, unpacking from boxes (preparation for scanning), scanning, cashiering, and packing, to make the sales go so smoothly: Michelle Heckathorn, Joe Kraatz, Spencer Maze, Jerry Plaisted, Cindy Weed, and Carol Jean Wolcott. Thanks to our treasurer, Herb Stern, for keeping us supplied with the cash needed to make change, for doing all the accounting for making bank deposits, and for doing all the work to properly pay the state and the vendors. Thanks also to the boy with Si Osgrove (his son?) who helped us with Joe's posters.

I hope I haven't left anyone out. Because of the teamwork of our volunteers, the sales process was so efficient, it was a lot of fun.

Sincerely, **Tom Birt**
Annual Sales Chair

CALENDAR OF UPCOMING EVENTS

■ FEBRUARY

— 2000 —

25-28 Southeastern Conference Info. SFCSS Inc., PO Box 161407, Miami FL 33116, e-mail sflacactus@aol.com

■ MARCH

5-12 Philadelphia Flower Show, one of the largest shows of its kind in the USA.

21 Midwest C&SS Show & Sale, Botanical Garden of Greater Cleveland, Noon to 5:00 PM Call Penny Chaikin for more info., 216-381-2525, 1556 Sheffield Rd., South Euclid OH 44121

■ APRIL

8-9 South Coast Cactus & Succulent Exhibit. Info. Contact Dick Hulett 310-832-2262

30 South Bay Epi. Soc. Show

■ MAY

5-7 Sonoran 3 Conference, Tucson C&SS, info Cactus Carol Clapp, e-mail kitfox@azstarnet.com.

6-7 Sacramento C&SS Show & Sale. Info Dorothy Williams 916-967-7988

6-7 Sunset Succulent Soc Show & Sale, Veterans Memorial Bldg., 4117 Overland Ave., Culver City CA. Info. Rosalie Gorchoff, show coordinator 310-822-1783

13-14 San Jose C&SS Show & Sale. Info Carole Keeton 406-773-9277

14 San Diego Epi Soc Show, 9:00 AM, Casa del Prado, Balboa Park, San Diego CA.

20 Carmichael C&SS Show & Sale. Info Pearl Lemkuil 916-483-4496

20-21 Gates Show & Sale in Redlands, call Barry Urman, 909-796-6417

■ JUNE

3-4 SDCSS Show & Sale at Casa del Prado, call Tom Knapik, 619-462-1805

9-11 Mid America Conference, host Henry Shaw C&SS, Viking Conference Center, St. Louis MO. Info, Kathy Malon, e-mail katmalon@world.att.net, or Pat Thomann, 3447 Dunnica, St. Louis MO 63118, 314-773-2931.

FYI FYI FOR YOUR INFORMATION FYI FYI

⇒ **Financial Statement:** a simplified copy of SDCSS's financial statements is supplied on page 6. A more detailed statement would be 3 pages long and we could not supply it here. The full report is available upon request, by the Treasurer, Herb Stern.

⇒ **DUES REMINDER:** Remember, dues went up to \$15.00 starting January 1, 2000. Many of you renewed early to take advantage of the old rates – thanks!

⇒ **Mailing labels:** If you are not sure when your dues expire please check your mailing label. The date is in the form: **Year/month**, of expiration. Mail your check to: P. O. Box 33181, San Diego CA, 92163-3181.

⇒ In the *Communique* (the newsletter of the San Gabriel Valley Cactus & Succulent Society) there is a short article about the **Vivienne Doney Memory Book**. It was presented to Vivienne by SGVCSS in 1980. The society by contacted by Vivienne's daughter recently to see if SGVCSS would like the book back. It has proved to be a valuable memento and record, a tribute to a woman who was the inspiration of many cactophiles throughout the US.

⇒ **The Eastern Spine** (The newsletter of the National Capital Cactus and Succulent Society) ran **Tom Knapik's** article, *What's the Status?* From the January 2000 issue of *Espinasy Flores*. We would like to thank Pete Boudriault for crediting SDCSS for the article!

⇒ Don't forget the **Anza-Borrego Desert** as winter is winding down. Call or write the **Anza-Borrego Desert Natural History Association** for the latest events and beat the heat, P. O. Box 310, Borrego Springs, CA 92004-0310, 760-767-3052, Web Address: www.california-desert.org.

⇒ SDCSS member **Kelly Griffin** spoke in January at the Gates Cactus and Succulent Society. Kelly spoke on his recent trip to Mexico.

⇒ **The Long Beach Cactus Club** gets the 'The Bee's Knees' award for treating its members to a great holiday party. LBCC members **Khobe Carvalho** and **Dave DeLucca** opened up their home for the club party.

A Personal Farewell to Jim Berry

by Stan Yalof

Jim has gone to tend the Great Cactus Garden. He and wife Shirley were members of both the Palomar and San Diego Cactus and Succulent Societies and life members of the latter. I last saw him at the November San Diego CSS meeting. He knew the end was nearing but carried on bravely.

Jim was trim, elegant, and athletic, a hard-driving tennis player, a sailor, a good ballroom dancer, and a golfer who preferred to carry his own bag until the disease which eventually overcame him, forced him to use carriers. He was 79 when he died. He looked much younger.

Jim was introduced to succulent plants through Shirley and came to appreciate their uniqueness and beauty. He was treasurer of the CSSA for two years in the mid-1980. At that time he visited and selected the Allen Press as publisher for the journal, which we use to this day.

Jim was a prolific and entertaining writer who wrote regular columns for the San Diego Union Tribune, the North County Times, and the Rancho Santa Fe Review and articles for the CSSA journal.

From the March-April 1985 Cactus and Succulent Journal:

The Genus: For the Beginner and Friends, page 53.

May-June 1985 issue:

The Kiss of Cacti, page 108.

July-August 1985 issue:

Seeds, page 158

September-October issue:

Succulents as Bonsai, page 204.

From Nov.-Dec. 1991:

Cactus-A National Treasure, being a review of the Jardin Exotique in Monte Carlo and a personal tour with Marcel Kronlein, its director.

Jim had many sides. I knew only two and would have liked to have known him better.

We'll miss him.

[Editors Note: This Issue of *Espinas y Flores* is Dedicated to the memory of Jim Berry. A fine man who did good work.

Though I did not know Jim well, I appreciated that Jim and Shirley were always together at Cactus and Succulent events and clubs in the San Diego area and southern California. A real tribute to a couple that shared many different interests. I had occasion to visit them at their home about 6 years ago and was made to feel welcome, a nice place devoted to cacti and succulents and Greyhounds.

Jim was Born June 19, 1920, in Tulsa, Oklahoma, he lived in Rancho Santa Fe for 26 years. He passed away in the final days of December 1999. The family suggests memorial donations to Greyhounds of America, 9078 Winter Gardens Blvd., Lakeside, CA 92040.

Facts and figures do not tell the whole story and Stan's note above tells only part of it. I hope that you will join us in expressing our deepest sympathy to Shirley and her daughters and others that were touched by Jim Berry.

Sincerely, Joseph. A. Betzler, Associate Editor]

San Diego Cactus & Succulent Society

Financial Report: Calendar Year 1999

INFLOWS:

Bus trip	230.00
CSSA sales	50.00
Dec lunch 1	345.00
Dues	3,030.00
Interest Inc	51.57
June book sales	156.24
Miscellaneous	158.00
Name tags	15.00
Opening balance	5,287.15
Plant sale	38,008.53
Poster sales	70.00
Supply sales	79.55

TOTAL INFLOWS 48,481.04

OUTFLOWS:

Bank Charge	46.00
Beverages	126.77
Calendar sales	164.40
Clubs & coops	15.00
Copy charges	16.17
Corp filing fee	10.00
Earth Day	150.00
Field trip	1,524.00
Food 1	204.20
History	51.62
Jan sale	3,265.48
Jan show	100.00
June sale	12,061.52
June show	1,197.65
Library	2,000.00
Membership	68.74
Newsletter 6	409.99
P.O. Box	64.00
Picnic supplies	62.85
Plants	9,498.55
Pots	256.51
Program speaker	1,399.54
Refreshments	205.58
Tax	1,846.00
Tax, Business	160.00
WAP supplies	959.69

TOTAL OUTFLOWS 42,864.26

OVERALL TOTAL 5,616.78

Note: The overall total includes funds set aside for Wild Animal Park activities.

Submitted by Herb Stern, SDCSS Treasurer

Membership Corner

Welcome New & Renewing

Members:

KEVIN STEPHENS



JOHN HUNTER



JOSEPH & LIANN STEAD

Please check the front label of your newsletter for a message or the expiration date. If the date is 2000/02 this is your last issue.

Please renew early and remember as of January 1, 2000 the basic membership is \$15.00. Additional members within the same household will remain the same \$5.00 per person.

Did you know that everyone that sells at SDCSS events is a member?



**GRIGSBY
CACTUS GARDENS**

"Growing plants for you since 1965"

Come visit us!!!

**We have a wide variety of plants
for the enthusiast**

Hours:

Tues.-Thurs.(call for appointment) 8am to 3pm
Fri. and Sat.(no appointment needed) 8am to 3pm
Closed Sun. and Mon.

see us on the web at:
www.cactus-mall.com/grigsby

**2354 Bella Vista Drive
Vista CA 92084-7836**

760/727-1323 fax 760/727-1578

ASTROPHYTUM

by Ric Newcomer

One of the best known of all the cactus genera, *Astrophytum* comes from eastern and northern Mexico and a small part of Texas. I believe there are still a lot of *Astrophytum asterias* in Texas that are on private ranches near the border of Mexico. We saw many behind barbed wire with guards patrolling the ranches. We did manage to get on one ranch near the border and brought back 12 plants. I still have some of these plants. This was in 1962 and there were as many *Astrophytums* growing as there were *Opuntias*. Today the *Opuntias* are still there. Large quantities of *Astrophytums* are not.

These are wonderful plants with *A. myriostigma* being the most desirable in collections, with *A. asterias* probably second — and the most difficult.

Today the Japanese have taken this genus and created some very beautiful and different plants, in most cases using *A. asterias* and *A. myriostigma*.

The most common *Astrophytum* are:

A. asterias

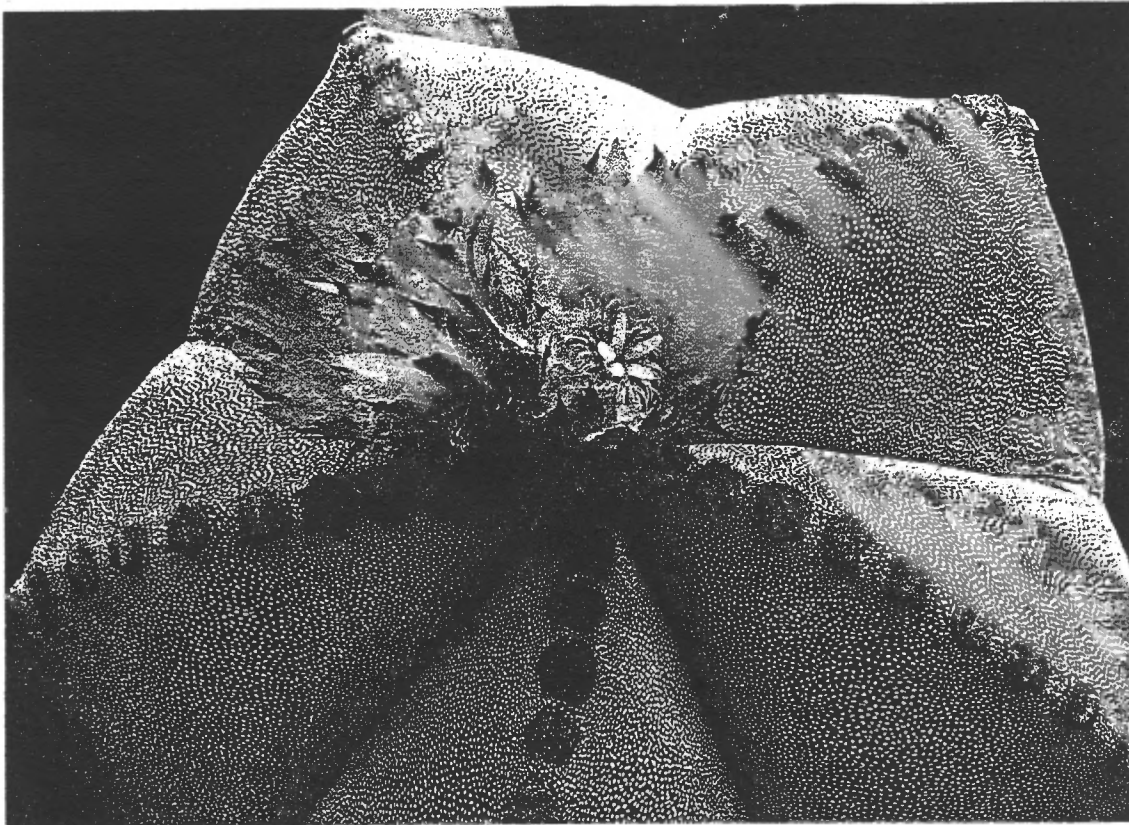
A. capricorne

A. myriostigma

A. ornatum

There are several varieties of the above plants.

I will be bringing 12 plants for you to see and compare. *A. myriostigma* can have 3 to 7 ribs, 5 being the most common. They can grow to a height of 2 feet.



Astrophytum myriostigma — probably the best-known of the species

Astrophytum, cont'd.

A. asterias, the most difficult to keep, will rot out easily in the winter if not kept dry.

A. capricorne, the most interesting with the long brown spines twisting and turning into each other.

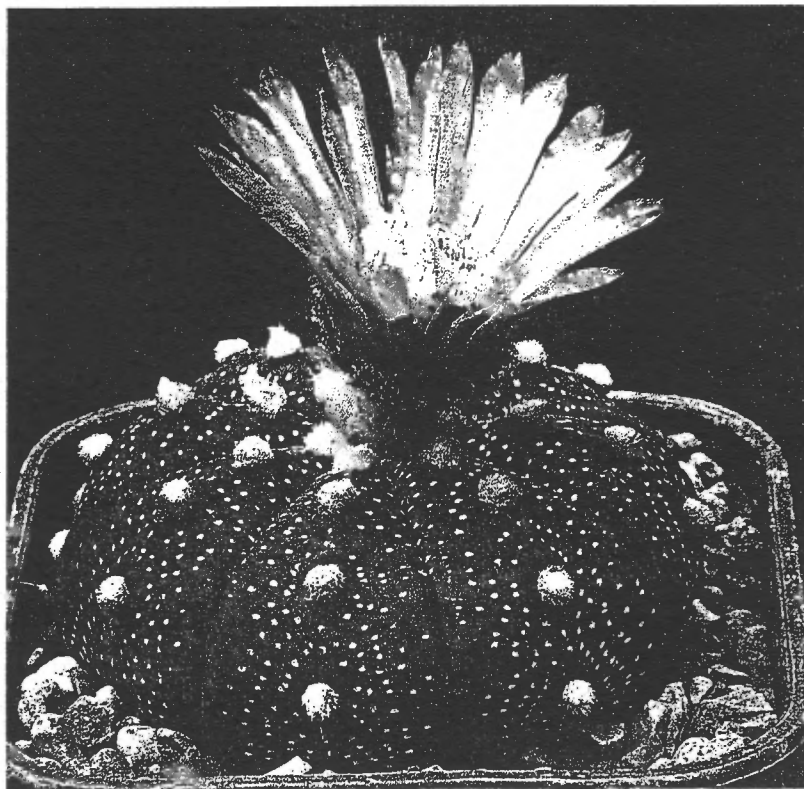
A. ornatum, I have several large plants and not any two look the same. All of the above come in numerous forms and are fun to collect.

We use our normal mix of 50% super soil with 50% pumice — with gravel added for good drainage. I would suppose, if I could give any advice on growing these plants to maturity, it would be ----- if you think they need water, **DON'T!!** Only mist from September to April. This is all mine get and even with this routine my two largest *A. asterias* rotted on me this year and folks — one was 14" high! It was the largest one I have ever seen — well approaching 75 years +? And I don't even have a picture of it.

Many collectors stay away from this genus because of the corking that develops as they get beyond the 5 year mark. But this is nature. The ones we brought back from Texas and Mexico have this corking, and I like it! It is normal and I wish the show judges would realize this and not detract for this condition.

Flowers are various shades of yellow to yellow with red centers to a dull orange. They are very large and beautiful. A sunny location in your greenhouse is required all year long. Offsetting is rare but I do have a double headed *A. myriostigma*.

I look forward to sharing these plants with you at our meeting and leave you with this thought. Start with seedlings and it will give you something to live for.

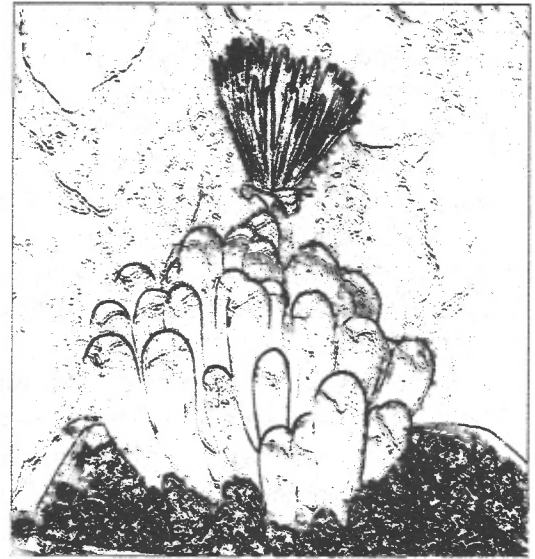


Astrophytum asterias – the smallest growing member of the genus, and perhaps the most desirable

Growing Mesembs

by Phil Bunch

For one reason or another many people think mesembs are difficult to grow. Here in Southern California nothing could be further from the truth. The vast majority of collectable mesembs come from parts of Southern Africa where the climate is similar to ours. The key to good growing includes understanding their seasonal growth patterns, providing proper lighting, and a careful hand with watering and feeding.



A Tale of Two Seasons

There is a tendency to think of mesembs as either winter or summer growers. This is deceptive. In fact, many are opportunistic and will grow whenever they get watered. A few however have very rigid growth patterns and die or become distorted if forced to grow out of season. Why is this so?

The basic answer is that Southern Africa is a land of diverse habitats. The western coast is dominated by sparse fall and winter rains with heavy fog and dew contributing to the available moisture. The east coast and much of the interior receive the majority of its precipitation during the summer. Winters are dry and can be quite cold in the interior. There also are areas that receive sparse rainfall during both summer and winter.

The key unifying factor is aridity. Few mesemb species grow where the annual rainfall exceeds 20 inches (about 500 mm) and most are found in drier areas. Another important variable is predictability. While the west coast has very low total rainfall it is relatively consistent from year to year. Precipitation in the arid summer rainfall areas is much less predictable.

You may say, how is this supposed to help me grow better plants? Just keep in mind that there is no such thing as a typical mesemb. Luckily, we can make some broad generalizations that will simplify our lives and get us off to a good start. There are a few special cases like Conophytum and Lithops, but we'll get to them later.

General Rules and Other Lies

The first general rule is, there are no absolute rules. There are always exceptions and the scope of this article does not allow a complete treatment. This being said we can go on to some helpful lies.

The second general rule is, learn as much as you can about the plant you want to grow. The recently published *Mesembs of the World* (Smith et al, 1998) is a wonderful resource. Ed Storms (1976) *Growing The Mesembs* also is good. Steve Hammer's books on *Conophytum* (Hammer, 1993) and *Lithops* (Hammer, 1999) are great resources for these special genera. By all means chat with people at the SDCSS meetings. This may be the best source of local experience. If you have access to the internet, join the MESEMBS community at <http://onelist.com/>. Once you're a member you'll be in touch with nearly 140 mesemb lovers worldwide.

The third general rule is, if in doubt, don't water. If the leaves become shrunken and lose their turgor, give them a bit more water. Even the winter growers benefit from occasional, light summer watering or frequent misting

The fourth general rule is, give them plenty of light. Most mesembs do well in full sun and become ugly or die in heavy shade. Protection from excessive rainfall is generally wise.

The fifth general rule is, keep the air moving. Mesembs don't like stagnation.

General rule six is, feed lightly and only in the growing season. For most, formulations with relatively low nitrogen and higher potassium are good.

The seventh rule is, learn from your own experience. Everyone's conditions are a little different. If you lose a plant don't worry. Everyone does and those who deny it are probably not fully candid.

Some Special Cases

Conophytum are almost strictly cool season growers. However, almost all of them come from parts of Southern Africa where cool season rains predominate. Begin regular watering when the weather cools off during the fall. It's best to allow most species to nearly dry out during this part of the year but, they do best if not grown too dry. During the coldest part of the year watering can be reduced. As spring arrives resume more regular if fairly light watering. As summer approaches the old bodies will begin to dry up and form a skin around the plant. This is normal and watering should be reduced. When the skin is dry regular watering should stop. Misting is beneficial during the dry season and in fact, throughout the year. Most prefer to be shaded during the summer.

Lithops grow most actively from spring through late autumn. In general, they should be watered when the sides of the plants show wrinkles that persist for a day or more. After blooming the old bodies will begin to shrivel. This will be during the winter rather than in summer. At this time, they should be kept quite dry. Once the skin has a paper like texture it's time to start watering again. As they begin to grow more rapidly they will appreciate additional water. During the late summer and fall additional water also is appropriate. Once again, misting the plants is beneficial. Lithops like plenty of sunshine but light shading may be beneficial during the hottest weather. During very hot periods the plants may become semi-dormant and watering should be done with care. Feeding should be light and low nitrogen mixes are best.

Some General Groups

The following list provides guidelines to growing some of the more popular genera of mesembs. As with most lists there are exceptions but this will generally keep you out of trouble. I have borrowed heavily from Steve Brack's classifications in the Mesa Garden catalog (1999).

Generally Vigorous, Summer Growers: these include: Aptenia, Delosperma, Drosanthemum, Erepsia and Lampranthus.

Spring to Fall Growers, mostly compact plants best kept cool and dry during the winter including: Acrodon, Aloinopsis, Bergeranthus, Carruanthus, Chasmatophyllum, Faucaria, Frithia, Hereroa, Marlothistella, Mestoklema, Nananthus, Neohenricia, Pleiospilos (most species), Rabiea, Rhinephyllum, Rhombophyllum, Stomatium, Titanopsis, and Trichodiadema.

Late Summer to Late Winter Growers: preferring frequent light watering and misting while active. Dormant from spring through summer but best with some shade and misting while not in active growth. These include Antimima, Argyroderma, Cheiridopsis, Conophytum, Dactyloopsis (Phyllobolus), Diplosoma, Jacobsenia, Maughaniella (Diplosoma), Meyerophytum, Mitrophyllum, Monilaria, and Oophytum.

Opportunistic Growers: will grow if temperatures, sunlight and watering allow but may become dormant during very hot weather. Among them: Antegibbaeum, Bijlia, Braunsia, Cephalophyllum, Cerochlamys, Cyliodrophyllum, Didymaotus, Dinteranthus, Dracophilus, Ebracteola, Fenestraria, Gibbaeum, Glottiphyllum, Imitaria, Jensenobotrya, Juttadinteria, Lapidaria, Malephora, Namibia, Odontophorus, Psammophora, Schwantesia, Sphalmanthus (Phyllobolus), Tanquana and Vanheerdea.

There is no reason why we can't grow superior mesembs here in San Diego. The rewards are well worth the effort, if effort it is!

Literature Cited

- Brack, S. 1999. Mesa Garden Catalog. Belen, New Mexico.
Hammer, S. 1999. Lithops: Treasures of the Veld. British Cactus and Succulent Society.
Hammer, S. 1993. Conophytum: A Conograph. Succulent Plant Publications. Pretoria, Republic of South Africa.
Storms, E. 1976. Growing the Mesembs. Azle, Texas.
Smith, G, Chesselet, P, van Jaarsveld, E, Hartmann, H., Hammer, S., van Wyk, B., Burgoyne, P., Klak, C. and Kurzwell, H. 1998. Briza Publications. Pretoria, Republic of South Africa.

THE SAN DIEGO CACTUS AND SUCCULENT SOCIETY CALENDAR FOR 2000

DATE IN 2000	PROGRAM	CACTUS OF THE MONTH	SUCCULENT OF THE MONTH	SPECIAL EVENTS
January 8 9:00 AM – 5:00 PM	Steven Hammer Conophytums	Plant, Book, and Artistic items for sale at our 3 RD Annual Winter Show and Sale		Winter Show and Sale
February 12 1:00 PM	Pam Koide Bird Rock Tropicals	Astrophytum Ric Newcomer	Cultivation of Mesembs Phil Bunch	Come and help in the Baja Garden, at the Wild Animal Park. New plantings are being made now, call SDCSS WAP Liaison
March 11 1:00 PM	Carl Volkers, C&J Cactus: Propagation	Ferocactus Kelly Griffin	Adrosmischus in Habitat Ross Shumway	
April 8 1:00 PM	Andrew Wilson South Africa on the Richtersveldt	Echinocereus Phyllis Flechsig	Gasteria Christine Miller	Please help and bring in either a Cactus of Succulent.
May 13 1:00 PM	Brian Kemble Mexico, Durango and Chihuahua	Parallel (Convergent) Evolution Pamela Badger		Bring in those problem plants for display tips
June 3–4 10:00 AM – 5:00 PM 9:00 AM – 5:00 PM	SDCSS Annual Show and Sale	Annual Summer Show and Sale over the first weekend in June 2000		Volunteer to help at the Show & Sale
July 8 1:00 PM	Steve Southwell Open Topic	Mammillarias tentatively Tom Birt	Sansevierias Michelle Heckathorn	Please bring in those Sansevierias
August 12 1:00 PM	John Trager Huntington Botanical Gardens	A Surprise! Joe Quijada	Stapeliads Joey Betzler	Got Stapeliads? Bring them in please
September 9 11:00 AM – 5:00 PM	SDCSS Annual Picnic	The Annual SDCSS Picnic and Auction will be held this weekend, look for place and time as the weekend approaches		Potluck & Auction
October 9 1:00 PM	Tom De Merritt Cacti of Texas	Mexican and South American Cereus Pamela Badger	Monadenium Tom DeMerritt	SDCSS Candidates
November 11 1:00 PM	Woody Minnich Latest Exploits	Echinofossulocactus Ed DeLollis	Cultivation of Caudiciforms Alan Weiss	Election of Officers
December 9 11:00 AM – 5:00 PM	SDCSS Holiday Party	Holiday Party & Gift Exchange		Bring Desserts to share

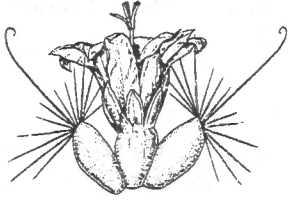
Monthly meetings start at 1:00 PM and usually go till around 4:00 PM, though these times will vary from month to month. The winter show and sale will start when the cashier is set, the Annual Show and Sale is more complicated and the Show will not open till the show is judged, usually around Noon on Saturday. The sale will open sooner. If you have any questions please call a SDCSS Board member, or representative listed on the next page.

Issue Highlights

- Speaker Information ... 2
- President's & Sales Chair Messages ... 3
- Calendar & For Your Information ... 4 & 11
- Tribute to Jim Berry ... 5
- Financial Report ... 6
- Plants of the Month ... 7-10

NONPROFIT ORG.
U.S. POSTAGE
PAID
SAN DIEGO, CA
PERMIT NO. 737

The San Diego Cactus & Succulent Society, Inc.
P.O. Box 33181, San Diego, CA 92163-3181



ESPINAS Y FLORES

Editor: Tom Knapik - 619 462-1805
Associate Editor: Joey Betzler - 858 569-8510
Mail to: 4669 71 St., La Mesa, CA 91941
fax 858 569-8510 or e-mail eyf2000@aol.com

SAN DIEGO CACTUS AND SUCCULENT SOCIETY INC

1999 Executive Board Members

OFFICERS

President - Tom DeMerritt
858-270-5544
Vice Pres.- George Flaisted
619-583-9551
Secretary - Laura DeMerritt
858-270-5544
Treasurer - Herb Stern
619-223-9134

EX OFFICIO

Immediate Past President
- Tom Knapik
619-462-1805

DIRECTORS

Pam Badger
619-589-1223
Ed DeLollis
760-945-7892
Joe Kraatz
760 758-7042
Spencer Maze
858-454-1870
Terry Parr
619-460-9111
Kelly Parrott
619-696-0376

SDCSS Volunteers on Standing Committees and Sub-Committees

Conservation:

Joey Betzler and Kelly Griffin

Education and Exhibits:

Brag Table - Shirley Berry
and Kay Quijada
Plants of the Month - Jeff Harris
and Joyce Buckner
Summer Show - Tom Knapik, J.
Betzler and Kay Quijada
Winter Show - Ed DeLollis

History: vacant

Liaison:

Balboa Park Desert Garden -
Susan Hopkins
CSSA Affiliate Rep. -
Kelly Griffin
Quail Botanic Gardens -
Phylis Flechsig
San Diego Botanic Garden
Foundation - George Flaisted
San Diego Floral Association -
Elizabeth Glover
S. D. Wild Animal Park's Baja and
Succulent Collections - J. Betzler

Library:

E. Athy, Tom Birt and Cynthia Santorini

Membership:

Joey Betzler (858-569-8510) and
D'erdra Smothers

Mailing:

Pam Badger and Jeff Harris
Plant and Seed Exchange:
Plants - Michele Heckathorn and Sara
Schell

Seeds - Kelly Griffin

Plant Sales and Supplies:

Annual Sales - Tom Birt
Auction and Holiday Plants - E. Athy,
and Tom DeMerritt
Benefit Table - Kay Quijada and E. Athy
Monthly Plant Sales - Jeff Harris and
Greg Wade
Monthly Supply Sales - George and Jerry
Flaisted

Publicity: Tom DeMerritt and Stan Yalof

Programs: Kelly Griffin (760-942-4866)

Reception:

Ethel Standish and Elizabeth Glover

Regalement:

Monthly - Lee Badger, Rudy Lime and
Stefy Mangold
Picnic - Laura and Tom DeMerritt

The SAN DIEGO CACTUS AND SUCCULENT SOCIETY, INC. is open to all persons interested in growing cacti and other succulent plants. Meetings are held the second Saturday of each month (except June, Sept. and Dec.) at 1:00 PM in room 101, Casa del Prado, Balboa Park. Executive Board meetings are open to all members; call any officer or director for the time and location. Annual dues are \$15.00 per single member per year, \$5.00 for each additional member within the same household. Single copies of *Espinas y Flores* are \$2.00 per copy sent within the USA; foreign subscriptions are \$30.00. Affiliated with the CACTUS AND SUCCULENT SOCIETY OF AMERICA, Inc. SDCSS Web Page available soon please stay tuned for address.