

Espinas y Flores

Newsletter of the San Diego Cactus and Succulent Society, Inc.

Affiliated with the Cactus and Succulent Society of America

Volume 35, Number 1, Saturday, January 8, 2000 at 9:00 AM



JANUARY SPEAKER — STEVEN HAMMER

STEVEN HAMMER WILL BE OUR DISTINGUISHED SPEAKER AT OUR JAN. SHOW AND SALE. He is a world renowned author, speaker, plant explorer, and propagator who will discuss and share with us slides of the genus *Conophytum*. He and Chris Barnhill are working on a new book due out sometime next summer. The cover photograph was taken by Chris of a new species he found that Steve named in his honor *Conophytum chrisocruxum* (Chris's cross).

Steven will also share with us his experiences on a recent trip to South Africa. He was accompanied by an international team sponsored by the University of Cape Town. They did some environmental work for a mining company and explored the Richtersveld and Namaqualand. Steven rediscovered an unnamed *Conophytum* species known only from a slide at Kew. His group found 3-4 new *Bulbines* as well. In general, he said the plants in habitat looked excellent despite having only 1/4" of rain during his stay.

Come and listen to Steven's great presentation and quick wit at 2:00 PM, Sat Jan. 8, 2000 Casa del Prado, Balboa Park



A WINTER SUCCULENT AND BLOOMING CACTUS

— SHOW AND SALE —

BY ED DELOLLIS

I am looking forward to our first meeting of 2000, to be held Saturday January 8. This will be our third annual winter show and sale and there will truly be something for everyone. First of all this is not like our June show and sale—no no! The January event takes place all in one room, on one day, where we pack the excitement and events of ten meetings into six hours of succulent sensation!

About the show: People ask what plant can I bring for the show? I tell them think of the show as a brag table only ten times bigger... we know there are a lot of good looking show plants out there in members' collections... this time of year look for them among your mesembs, *Crassulaceae*, Aloe-types, Euphorbias, bulbs, Asclepiads and even cacti, to name but a few of the possible choices.

please see Winter Show next page



Please send your letters, artwork, poetry, Cactus or Succulent of the Month articles, puzzles, comments, or criticisms, etc. to:

Tom Knapik 4669, 71 Street, La Mesa, CA 91941

Phone 619-462-1805 Fax 858-569-8510 E-mail eyf2000@aol.com

Newsletter submissions are due before the 14th each month, unless other arrangements are made.

Espinas y Flores, the newsletter of the San Diego Cactus and Succulent Society, Incorporated, P.O. Box 33181, San Diego, CA 92163-3181, is published monthly with the exception of a combined May-June issue (11 issues per year). Newsletter circulation is approximately 350, with an additional 20-30 issues going to educational institutions, botanical societies, cactus and succulent nurseries, local publications, related natural history events, exhibits, and other interested groups or individuals upon request. Subscriptions are \$10 per year for bulk mail within the U.S.A.

Opinions stated in the articles and editorials of *Espinas y Flores* are solely the opinions of the authors or editor and do not necessarily represent the opinions of other SDCSS members, the Board of Directors, or the organization in general. All materials submitted to *Espinas y Flores* for possible publication may be edited in form and content. All material in the *Espinas y Flores* may be reprinted by other nonprofit organizations (unless such permission is expressly denied in a note accompanying the material) provided that: proper credit is given to the SDCSS, *Espinas y Flores*, and the author. Please send one copy of the publication containing the reprinted material to the editor. Reproduction in whole or part by any other organization of publication without the permission of the editor is prohibited. Volume 35, Number 1, Published December 21, 1999.



PRESIDENT'S MESSAGE FOR JANUARY 2000



Our Holiday meeting and dinner was a festive event – there were 87 members in attendance – that's been our largest holiday gathering in a long time. It was wonderful to see everyone decked out in spirit and dress for the holidays – what a treat to see Bob Taylor, one of our most senior members, in attendance! Kelly Griffin surprised the crowd with a special slide presentation he put together on his recent trip to Mexico – THANK YOU Kelly.

Michelle Heckathorn was presented with the VOLUNTEER of the YEAR Award. This was well deserved, we can't thank you enough Michelle for all of your efforts.

A special THANKS to Pam Badger for recording the Auction Plants. The first plant selected was *Tylecodon Bucholzi*, belonging to Beverly Kirkegaard. The club was also lucky to have a framed print of the Sonoran Desert poster, issued by the U.S. Postal Service to auction. This poster was generously donated to the club by Joe Kraatz, thank you Joe. This auction was a great way to raise money for our club as well as great way for members to expand their collections.

We all enjoy the monthly Cactus and Succulent articles. Jeff Harris is responsible for the coordination and scheduling of these articles. We are looking for members to write and contribute articles for our newsletter this new year. We have a lot of talent and knowledge in our club and I'm asking you to share your knowledge in the form of articles. Please contact Jeff Harris at 619-294-5708.

A Special Thanks to Betty Athy, Tom Birt and Stan Yalof for serving on the Board of Directors the past few years – you all did a splendid job and will be missed. The following members will serve as Board of Directors for term of 2000–2001. They are: Pam Badger, Ed DeLollis, Joe Kraatz, Spencer Maze, Terry Parr and Kelly Parrott.

The club's Winter Show will take place during our January meeting. Please participate and be a "show-off" show your prize specimens. Our mini-winter show provides us with an opportunity to share our favorite plants and to educate the public on the wonders of the cactus and succulent world.

A prosperous and Happy New Year to all.

Sincerely,
Thomas De Merritt



WINTER SHOW AND SALE – continued

When you walk into the room, you will see that 85% of the space and tables is devoted to the numerous vendors. So now you can shop shop shop for plant bargains and take a break and view the show plants and all the while hang out with your friends, socialize and shoot the breeze. You can come and go as you please – we will have a place for people to check their plant purchases while they view the show or do other things in the Park. We will of course have speakers, preeminent African plant authority Steven Hammer will have a presentation in the library at a time to be announced in the early afternoon. For the first time we will have "Talks and Walks" at regular intervals during the day on different subjects and locations in the Park

Now, we are asking for big member participation to make this happen to its fullest potential. We will all have to arrive between 8:00 and 8:30AM for table set-up. Later, we will need volunteers for security, cashing and plant-check— all of which will be run on shifts. We will need people to lead walks and to give talks. Please contact me at 760-945-7892, if you want to participate in this growing event. We need everyone to bring their best show plants and we can always find a place for another vendor. Remember members are welcome to sell plants, but you must contact our sales chair, Tom Birt ASAP (858-452-0389). So then, I will see you all there on January 8, to buy a few plants, swap succulent sagas and share tall tales of things that went wrong when the clock changed from 1999 to 2000.

EvF

CALENDAR OF UPCOMING EVENTS

■ JANUARY

— 2000 —

- 8 SDCSS 3rd Annual Winter Show and Sale 10:00 AM to 5:00 PM, Call Ed. DeLollis, 760-945-7892
29 CNPS Field Trip to Mission Trails Regional Park, call Kay Stewart, during work hours at 619-234-2668 or www.san.rr.com/cnpssd for more events

■ FEBRUARY

- 25-28 Southeastern Conference Info. SFCSS Inc., PO Box 161407, Miami FL 33116, e-mail sflacactus@aol.com

■ MARCH

- 5-12 Philadelphia Flower Show, one of the largest shows of its kind in the USA.
21 Midwest C&SS Show & Sale, Botanical Garden of Greater Cleveland, Noon to 5:00 PM Call Penny Chaikin for more info., 216-381-2525, 1556 Sheffield Rd., South Euclid OH 44121

■ APRIL

- 30 South Bay Epi. Soc. Show

■ MAY

- 5-7 Sonoran 3 Conference, Tucson C&SS, info Cactus Carol Clapp, e-mail kitfox@azstarnet.com.
6-7 Sacramento C&SS Show & Sale. Info Dorothy Williams 916-967-7988
6-7 Sunset Succulent Soc Show & Sale, Veterans Memorial Bldg., 4117 Overland Ave., Culver City CA. Info Rosalie Gorchoff, show coordinator 310-822-1783
13-14 San Jose C&SS Show & Sale. Info Carole Keeton 406-773-9277
14 San Diego Epi Soc Show, 9:00 AM, Casa del Prado, Balboa Park, San Diego CA.
20 Carmichael C&SS Show & Sale. Info Pearl Lemkuil 916-483-4496
20-21 Gates Show & Sale in Redlands, call Barry Urman, 909-796-6417

■ JUNE

- 9-11 Mid America Conference, host Henry Shaw C&SS, Viking Conference Center, St. Louis MO. Info, Kathy Malon, e-mail katmalon@world.att.net, or Pat Thomann, 3447 Dunnica, St. Louis MO 63118, 314-773-2931.

■ AUGUST

- 21-25 Succulenta 2000, Kirstenbosch Botanical Gardens, Capetown, RSA. Info, Organizing Com, Succulenta 2000, Private Bay X10, Hatfield, 0011 South Africa. Phone +27-11-884-5588, FAX #27-11-884-5685. E-mail: kambroo@cis.co.za
25-27 Eastern C&S Conference, host Connecticut C&SS, Southbury Hilton, Southbury CT. Info (as soon as it is available) Jeannine Loya, 100 Rensselaer Av., Cohoes NY 12047

■ SEPTEMBER

- 2 Huntington Symposium, Huntington Botanical Gdns, 1151 Oxford Rd., San Marino CA. Info 626-405-2160 or 2277
3 CSSA Board, Huntington Botanical Gdn.

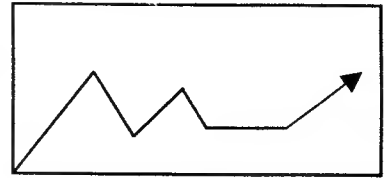
FOR MORE C&S INFO. SEE: WWW.CACTUS-MALL.COM/CSSA/EVENTS.HTML OR WWW.CACTUS-MALL.COM/EVENTS.HTML

FYI FYI FOR YOUR INFORMATION FYI FYI

- ⇒ **DUES REMINDER:** Starting January 1, 2000, the basic membership will increase to \$15.00, additional members within the same household will remain the same \$5.00 per person.
- ⇒ **Mailing labels:** If you are not sure when your dues expire please check your mailing label. The date is in the form Year/month of expiration. Mail your check to: P. O. Box 33181, San Diego CA, 92163-3181.
- ⇒ **SDCSS Winter Show reminder:** Please volunteer to help, call Ed DeLollis 760-945-7892.
- ⇒ **SDCSS Winter Show Sales:** Please call Tom Birt 858-452-0389 for sales info.
- ⇒ Congratulations to Michelle Heckathorn as Volunteer of the Year, she joins the list with Michael Cullen and Jeff Harris. She has contributed a lot to our organization since she joined!

WHAT'S THE STATUS?

by Tom Knapik

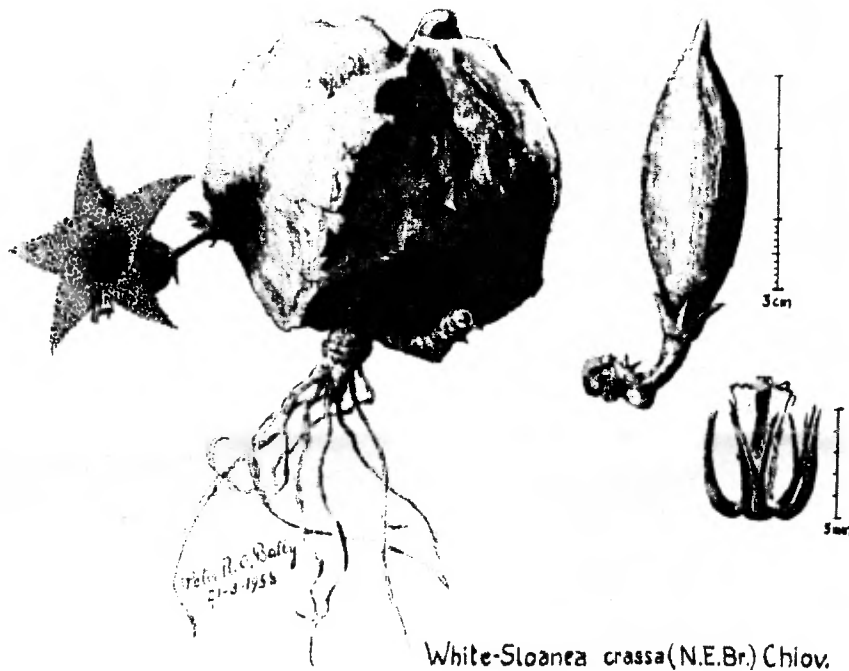


Topic # 4: *Whitesloanea crassa* (N. E. Brown) Chiov.

VERY FEW SUCCULENT PLANTS SHARE THE RARITY AND PRESTIGE OF *WHITESLOANEA CRASSA*. It epitomizes the fragile state of propagating rare species and political or environmental disasters that push many of them to extinction. Until recently, the status of *W. crassa* had been well documented because of its rarity. The history of this species in cultivation though, resembles that of a Greek tragedy.

Whitesloanea crassa was brought to the attention of the scientific community by Colonel R. E.

Drake-Brockman, a medical officer in, what was then, British Somaliland. He sent a single specimen, discovered near Odweina, to Kew Gardens in 1914. After five years of cultivation it flowered and was described by N. E. Brown as *Caralluma crassa*. In 1937, Alain White and Boyd L. Sloane separated the plant from *Caralluma* in their three volume monograph, *The Stapelieae*. The decision was based on the plants unique coronal structure and it was given the generic name *Drakebrockmania*. Later that year though, Emilio Chiovenda discovered that generic name was already in use for a genus



White-Sloanea crassa (N.E.Br.) Chiov.

of Gramineae (in the grass family) and renamed the plant *Whitesloanea*.

The original plant at Kew had long since passed away and many thought it to be extinct in the wild as well. Then in 1958, Roy Tribe of the Somaliland Forestry Department, sent a second specimen to Peter Bally followed by several other plants that were collected near Sheik, Somalia hundreds of miles from the original locality. Peter painted a pic-

If found it is eaten and they call it Aror Khaleh ...

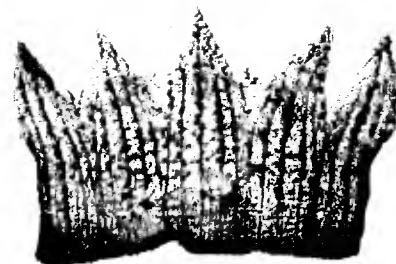
ture from a photograph of one plant in fruit shown above. He also wrote an account of *Whitesloanea*'s rediscovery in a 1959 edition of the *Cactus and Succulent Journal*. In the article he describes the harsh environment and resourcefulness of the Somali people. If found it is eaten and they call it Ar-



W. crassa from habitat near Garoe, Somalia

ror Khaleh which means "little hills" referring to the crenations along the edges. Peter felt that the rarity of this species was due to new environmental pressures caused by growing villages and grazing animals, primarily goats. All of the specimens sent to Peter perished in a short amount of time and the plant was again thought to be lost in cultivation and near extinction in habitat.

Two expeditions to Somalia in 1985 lead by John Lavranos and company produced a few plants which eventually were loaned to Chuck Hanson at Arid Lands Nursery.



Inner corolla of *W. crassa*.

When one plant came into flower, Chuck flew Joey Betzler over to attempt self pollination. Joey showed him the technique and was given the corolla as seen above. The self pollination did not take. Later that year, Chuck was able to use two clones that were in flower and make viable seed and grow this species from seed for the first time. I visited the nursery before the seedlings were large enough to sell and shot the photo below. *Whitesloanea crassa* appeared on Chuck's sales list for \$150 in 1993. I thought I would purchase one when the price dropped a bit.

This species proved to be easy from seed but very difficult to maintain. Some type of fungus or bacteria killed all of the remaining plants and most people that had purchased them have lost them as well. One beautifully grown specimen showed up at the 10th Eastern CSSA show in 1996 but as of Oct. of this year the



Roseann Richards plant at the Andover show

plant is thought to have perished. A photograph of Richard Brown's 11 inches tall plant in the Jan/ Feb 1998 issue of the CSSA Journal is magnificent but I do not know if it is currently still alive. I do know for sure that no more seeds have been produced and that there are three specimens in a single collection in South Africa that have not flowered together. There must be more specimens in the US that have survived and are mature enough to flower. This species is too fantastic to let slip away again. Please contact me at eyf2000@aol.com if you know of any that are still alive. Networking to produce more seed is imperative if we are to save this species in cultivation.



seedlings in trays at Aridlands in 1992

THE SAN DIEGO CACTUS AND SUCCULENT SOCIETY PRESENTS:

A WINTER SUCCULENT
AND
BLOOMING CACTUS
> > SHOW AND SALE < <

ONE DAY ONLY
JANUARY 8 2000
9 - 5

ROOM 101 - CASA DEL PRADO,
BALBOA PARK, SAN DIEGO, CA
FOR MORE INFORMATION CALL:
ED DELOLLIS 760-945-7892

A SPECIAL PRESENTATION
BY AUTHOR AND PLANT EXPERT
STEVEN HAMMER WILL START AT 2:00 PM.



*The art work is from the cover of the March-April 1984 Cactus and Succulent Journal, from a water color by Ellaphine Ward-Hilhorst of *Glottiphyllum muirii* and *Faucaria felina*.*



GRIGSBY
CACTUS GARDENS

"Growing plants for you since 1965"

Come visit us!!!
We have a wide variety of plants
for the enthusiast

Hours:

Tues.-Thurs. (call for appointment) 8am to 3pm
Fri. and Sat. (no appointment needed) 8am to 3pm
Closed Sun. and Mon.

see us on the web at:
www.cactus-mall.com/grigsby

2354 Bella Vista Drive
Vista CA 92084-7836
760/727-1323 fax 760/727-1578

Membership Corner

In 1999 we had about 50 new members join SDCSS! As 1999 closes and 2000 begins we have about 360 members.

Special Note: as we finish out the year we have our first International membership:



David I. Sheppard



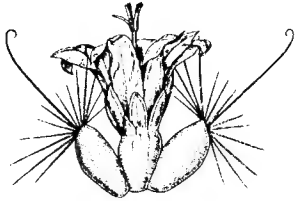
Please check the front label of your newsletter for a message or the expiration date. If the date is 2000/01 this is your last issue. Please renew early and remember as of January 1, 2000 the basic membership increases to \$15.00. Additional members within the same household will remain the same \$5.00 per person.

Issue Highlights

Speaker & Winter Show ... 2
 President's Message ... 3
 Calendar & For Your Information ... 4
 What's the Status ... 6
 Winter Show Flier & Membership ... 7
 Name this Succulent! ... 8

NONPROFIT ORG.
 U.S. POSTAGE
PAID
 SAN DIEGO, CA
 PERMIT NO. 737

The San Diego Cactus & Succulent Society, Inc.
 P.O. Box 33181, San Diego, CA 92163-3181



ESPINAS Y FLORES

Editor: Tom Knapik - 619 462-1805
 Associate Editor: Joey Betzler - 858 569-8510
 Mail to: 4669 71 St., La Mesa, CA 91941
 fax 858 569-8510 or e-mail eyf2000@aol.com

SAN DIEGO CACTUS AND SUCCULENT SOCIETY INC

1999 Executive Board Members

OFFICERS

President - Tom DeMerritt
 858-270-5544
 Vice Pres.- George Flaisted
 619-583-9551
 Secretary - Laura DeMerritt
 858-270-5544
 Treasurer - Herb Stern
 619-223-9134

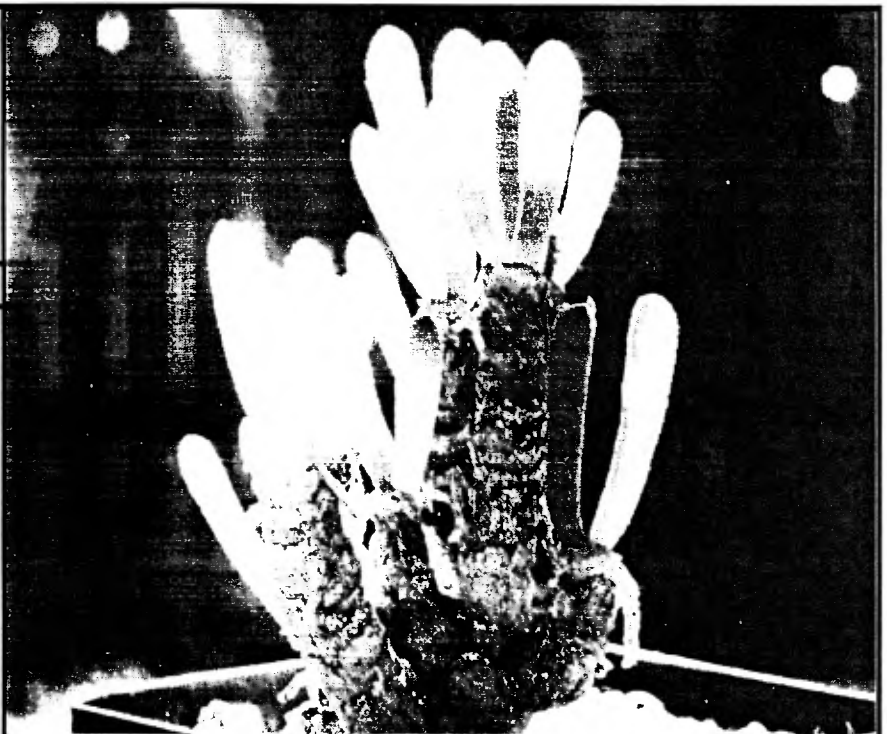
DIRECTORS

Pam Badger
 619-589-1223
 Ed DeLollis
 760-945-7892
 Joe Kraatz
 760 758-7042
 Spencer Maze
 858-454-1870
 Terry Parr

EX OFFICIO

Immediate Past President
 - Tom Knapik
 619-462-1805

Kelly Parrott
 619-696-0376



Name this succulent! Hint: it is a winter grower. Name to the genus only, write down your guess and place it in the drawing container at our next meeting.

The SAN DIEGO CACTUS AND SUCCULENT SOCIETY, INC. is open to all persons interested in growing cacti and other succulent plants. Meetings are held the second Saturday of each month (except June, Sept. and Dec.) at 1:00 PM in room 101, Casa del Prado, Balboa Park. Executive Board meetings are open to all members; call any officer or director for the time and location. Annual dues are \$15.00 per single member per year, \$5.00 for each additional member within the same household. Single copies of *Espinas y Flores* are \$2.00 per copy sent within the USA; foreign subscriptions are \$30.00. Affiliated with the CACTUS AND SUCCULENT SOCIETY OF AMERICA, Inc. SDCSS Web Page available soon please stay tuned for address.