

ESPINAS Y FLORES



VOL. 59, No. 05
MAY 2024

NEWSLETTER OF THE SAN DIEGO CACTUS & SUCCULENT SOCIETY
AN AFFILIATE OF THE CACTUS AND SUCCULENT SOCIETY OF AMERICA



JUNE SHOW & SALE // MAY SPEAKERS & PRE-MEETING TOPIC //
MEMBER SECTION // APRIL BRAG TABLE RESULTS // ...and more



ON THE COVER

Pfeiffera miyagawae in bloom
Photo by Patricia Neal

TABLE OF CONTENTS

President’s message pg 3

2024 Summer Show & Sale pgs 4 - 7

Pre-show Plant Prep Guide pgs 8 - 9

Upcoming events pgs 10 - 11 // Member section pg 12

April Brag Table Results pgs 13 - 30

UPCOMING SDCSS SCHEDULE

OUR UPCOMING MEETING
May 11th

2024 SDCSS JUNE SHOW AND SALE
June 1st –2nd

EXECUTIVE BOARD

President	Pam Badger
Vice President	Chris Miller
Secretary	Olga Batalov
Treasurer	Ken Brown

New Member Orientation	Patricia Bryan & Jay Crowley
Monthly Regalement	Sandy Wetzel-Smith
Picnic Regalement	[open]
Coffee in the Garden Coordinator	Pam Badger

DIRECTORS

Pat Bryan, Luis Gonzalez, Jen Greene, Kelly Griffin, Dean Karras, Georgia Kenney, and Jared Petker

LIAISONS

Balboa Park Desert Garden	Susan Hopkins
CSSA Affiliate Rep	Rick Bjorklund
SD Botanic Foundation	Lynn Elliot
SD Zoo Safari Park, Baja & Old World Gardens	May Fong Ho
Palomar CS Society Liaison	Brita Miller

COMMITTEES & SUBCOMMITTEES

Conservation	Herb Stern
Brag table	Denise Huntsman-Griffin & Susan Hopkins
Plant of the Month	Pam Badger
Summer/Winter Show	[open]
Historian	Jerry Garner
Grants	Jerry Garner
Library Committee	Luis Gonzalez
Exchange Plants/Seeds	Michelle Heckathorn
Annual Sales	Chris Miller
Auction & Holiday Plants	Kelly Griffin
Show Auction Manager	[open]
Monthly Plant Sales	Chris Miller
Benefit Drawing Table	Chuck Ramey
Programs	Kelly Griffin
Reception	Susan Hopkins & Candy Garner

MEMBERSHIP, BUSINESS, & PUBLICITY

Membership	Olga Batalov
Business Manager	Donna Roden
Newsletter Editor	Der-shing Helmer
Webmaster	Jared Petker
Publicity	Christie Lathrop

CONTACT SDCSS

membership@sdcss.net

CONTACT EyF EDITOR

eyf.editor@gmail.com

Opinions expressed in articles and editorial comments are solely the opinions of the author or the editor, and do not necessarily represent the opinion of the SDCSS, the board of Directors, or the organization as a whole. All material submitted to the *Espinās y Flores* for possible publication may be edited in form and content and shared on the club's social media with attribution. All material contained in the *Espinās y Flores* may be reprinted by other non-profit organizations unless permission is expressly denied in a note accompanying the article. Reproduction in whole or part by any other organization without the express consent of the editor is prohibited.

PRESIDENT'S MESSAGE

Greetings and Happy Spring! It has been an unusually cool April—tomorrow I'm heading out to Anza Borrego for a few days to get warm! My garden has been exciting to watch—Aeoniums blooming, Dudley's putting on a show, and some awesome cactus flowers. A great time to be a gardener.

It was fun to see so many of you at the April meeting—and what a wonderful meeting it was! The Brag Table was the most extensive I have seen in a while, packed with so many beautiful plants in all three of our table sections: Novice, Intermediate, and Advanced. I like to think everyone was getting ready for our Big Show in June... thanks to all who participated! **Olga Batlov** gave an enlightening talk on *Pediocactus*—what amazing little plants—another difficult-to-find, cold tolerant genus. Our main speaker, **Michiel Pillet**, gave a fascinating talk about the science behind the effort to protect endangered species, especially succulent plants from all over the world. Thanks to all who made this a great meeting. As I sat there during the presentation, I looked around the room at all we have going on each month and felt much gratitude for all the people who pitch in to make this possible.

The May meeting will be a bit different as we are sharing space and activities with the Epiphyllum Society. They will be having their annual sale on the patio just outside Room 101 and they are providing a main speaker—don't miss this chance to get some of these

wonderful flowering cactus and learn more about them. We will also be having our regular sale, Benefit Drawing, Brag table, library, and exchange table. We will also be reviewing all the ins and outs of the upcoming June Show and Sale, including answering all questions about volunteering and showing plants. Flyers will be available for you to take and share with your friends as well as the entry cards you need to fill out to enter plants. Make your plans to be there on **May 11** for this important and fun meeting! As we will be having members of the Epi Society also attending, **please think about bringing some treats to share at the break.**

Pam Badger

April 27, 2024



Aeonium "Kiwi" Pam Badger

GET READY FOR SPINE TIME.

THE SAN DIEGO CACTUS & SUCCULENT SOCIETY PRESENTS:
THE 2024 SUMMER SHOW AND SALE

Sat June 1 & Sun June 2, 2024

at the Casa del Prado in Balboa Park

See incredible out-of-this-world succulent and cacti from around the globe, and shop for unique plants from dozens of plant vendors and local artisans.

Free admission, with early-bird access on Saturday for members!

TIMES & DATES

SATURDAY	9am—11am	members only sale (membership card required)
	11am—5pm	sale open to the public
	10am—3pm	show times
SUNDAY	10am—4pm	sale open to public
	10am—4pm	show times

The show is open to anyone who grows succulent plants, and there is no limit to the number of entries per class or the number of classes entered.

Detailed show information and membership info available at upcoming meetings, in our newsletters, and on our website

www.SDCSS.net

UPCOMING 2024 SUMMER SHOW AND SALE

JUDGING SCALE - SPECIMENS, COLLECTIONS AND DISPLAYS

Condition: 70%
Staging: 15%
Size & Maturity: 10%
Nomenclature: 5%

EDUCATIONAL DISPLAY

Two or more entries must be exhibited for CSSA award. **Educational Value:** 80% **Staging & Originality:** 20%.

AWARDS POINT SYSTEM

Divisions I, II and IV: 1st = 3 pts, 2nd = 2 pts, 3rd = 1 pts **Division III:** 1st = 7 pts, 2nd = 5 pts, 3rd = 3 pts
Division V: 1st = 12 pts, 2nd = 10 pts, 3rd = 8 pts **Division VI:** no points but entries are eligible for plaques, trophies and rosettes **Plaques and Trophies:** 10 pts **Rosettes:** 5 pts

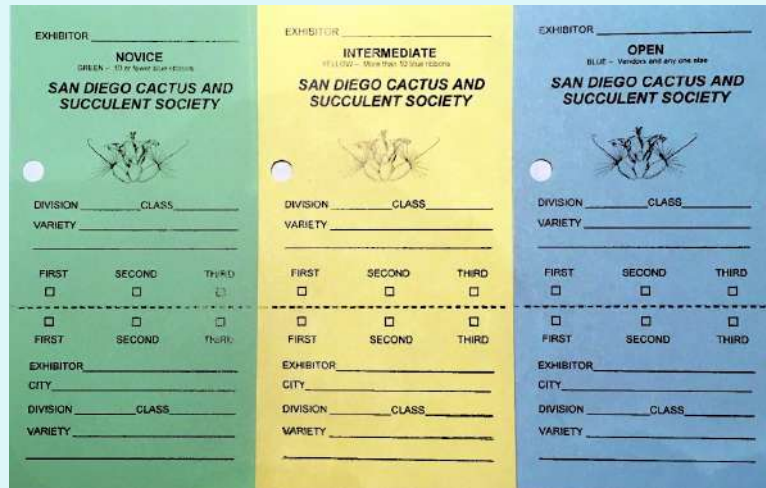
ENTRY NOTES: PLEASE USE THE MOST CURRENT CLASSIFICATION SCHEDULE. Classes 1-116 (except for 44,105 and 108-111) are divided into two pot sizes: **A and B** (**A:** Width plus Length = 10 inches and under; **B:** W+L over 10). Note that **one** plant per container is allowed in these classes.

The categories for competing entries are:

GREEN cards for exhibitors that have won 10 or less blue ribbons in a recognized cactus and succulent show.

YELLOW cards are for participants that have won more than 10 blue ribbons

BLUE cards are for vendors and those that wish to compete against them. Awards will be selected from any category



For those of you who have not shown plants before, or would like tips on the best way to prep your plants for the show, there will be a **Pre-Meeting Workshop by Jerry Garner** at the May meeting: you won't want to miss out on Jerry's presentation at **11:30 in the kitchen**.

We'll also have our **CSSA Convention planning meeting at 12:00**. As those of you who have previously participated as volunteers already know, this is a fun and exciting event to be a part of. As usual, we'll be gathering at noon at the May meeting with a variety of ways to participate, so be sure to attend!

PAM BADGER

2024 SDCSS SUMMER SHOW INFORMATION & RULES

The SDCSS Summer Show is open to anyone who grows succulent plants. There is no limit to the number of entries per class or the number of classes entered, though no entry can be entered in more than one class. All property shall be marked with the owner's name, not visible to the judges. The exhibitor must have grown the plant for at least six months.

All entries must have properly filled entry cards and must be entered in the appropriate Division and Class (see pgs 7 & 8) to be eligible for awards. Exhibitors are responsible for placing these items with their entries. For the *Best Plant Grown From Seed* award, the exhibitors must have raised the plant themselves. Plants may be species or hybrids. Hybrids may be exhibited in the class of either parent. Grafted plants will be accepted in any class, though awards for grafts will be selected from Division IV.

Entries must be clean, healthy, pest-free, and dry. Remove any plant nametags from pots (except for collections and displays). Awards must remain with exhibits until the close of the show. Classes with few entries may be combined. The show committee reserves the right to reject plants or exhibits and to readjust entries for the good of the show. Show hours must be followed. The San Diego Cactus and Succulent Society will exercise due caution in safeguarding exhibits. However, SDCSS cannot assume responsibility for loss of property. Entries are judged against perfection. The judges' decisions are final. In the case of disputes and/or ties, the Show Chair (or if the Chair's plants are involved, the Head Clerk) shall make the final decision.

Trophies and plaques are perpetual, except the educational and novice awards. Winners will receive a hand-crafted pot and a certificate suitable for framing. 1st, 2nd and 3rd place ribbons will be awarded in each class; however, should the judges feel that a 1st, 2nd, or 3rd place is not merited, no awards will be given. To receive the *CSSA Award*, two or more educational displays must be entered. Judges, Club President, and Show Chairman will each award two rosettes to their favorite plants.

CACTUS

Best Cactus	Phillip Corliss Plaque
Best Novice Cactus	SDCSS Plaque
Best Intermediate Cactus	Jürgen Menzel Trophy
Best Epiphytic Cactus Plant	William & Ruth Nelson Trophy
Best <i>Mammillaria</i>	Elibet Marshall Trophy
Best <i>Opuntieae</i>	James & Shirley Berry Trophy

SUCCULENTS

Best Succulent	Ruby Falk Plaque
Best Novice Succulent	SDCSS Plaque
Best Intermediate Succulent	Rudy Lime Trophy
Best <i>Agave</i>	Doris Rake Plaque
Best <i>Aloe</i>	Barbara Jeppe Trophy
Best <i>Bursera</i>	Jeff Harris Trophy
Best <i>Echeveria</i>	Oliver & Sophie Loyland Trophy
Best <i>Euphorbia</i>	Russell & Lydia Evans Cup
Best <i>Mesemb</i>	Samuel & Adela Markey Trophy
Best <i>Pelargonium</i> or <i>Sarcocaulon</i>	Wilna Johnson Trophy
Best <i>Sansevieria</i>	Richard G. Latimer, Sr. Trophy

CACTUS OR SUCCULENTS

Best Baja Plant	Richard G. Latimer, Jr. Memorial Trophy
Best Graft	Bob & Suzanne Taylor Trophy
Best Mexican Plant in Show	Dudley B. Gold Trophy
Best Plant Grown From Seed	Tegelberg Family Plaque
Rarest Plant in the Show	Terry & Collette Parr Trophy
Best San Diego County Succulent	Julianne Rice Trophy
Best Miniature	Monte & Mary Woodworth Plaque
Best Pachycaul or Caudiciform	H. Warren & Virginia Buckner Trophy
Best Succulent Bonsai	Rudy & Teresita Lime Trophy
People's Choice Award	Rose D'Attilio Memorial Plaque

DISPLAYS, EXHIBITS AND HIGH POINTS

Best Educational Display	CSSA Award
Best Exhibit	Reuben Vaughan Plaque
Most Artistic Display	Walter & Hazel Scott Plaque
High Points 25 or fewer entries	SDCSS Plaque
High Points 50 or fewer entries	James & Shirley Berry Trophy
Sweepstakes Trophy	Ronald & Marcia Monroe Trophy

2024 SDCSS SUMMER SHOW DIVISIONS AND CLASSES

DIVISION I: CACTI (CACTACEAE)	
1	Acanthocalycium, Echinopsis, Lobivia, Soehrensia
2	Acharagma, Coryphantha, Escobaria, Neolloydia
3	Ancistrocactus, Pediocactus, Sclerocactus
4	Ariocarpus
5	Astrophytum
6	Aztekium, Epithelantha, Obregonia, Ortegocactus, Pelecyphora, Strombocactus
7	Blossfeldia, Cintia Coleocephalocereus (Buiningia), Discocactus, Frailea, Uebelmannia
8	Columnar Cacti: Arrojadoa, Bergerocactus, Browningia, Carnegiea, Cephalocereus, Cereus, Cipocereus, Cleistocactus, Espostoa, Micrantocereus, Myrtillocactus, Pilocereus, Pilosocereus, Trichocereus
9	Copiapoa
10	Denmoza, Matucana (Submatucana), Oroya
11	Echinocactus, Ferocactus, Hamatocactus, Leuchtenbergia, xFerobergia
12	Echinocereus - pectinate spines
13	Echinocereus - straight spines
14	Eriosyce (Horridocactus, Neochillenia, Neoporteria, Pyrrhocactus)
15	Gymnocalycium - clustering
16	Gymnocalycium - solitary
17	Mammillaria with hooked spines, solitary
18	Mammillaria with straight spines, solitary
19	Mammillaria with hooked spines, clustering
20	Mammillaria with straight spines, clustering
21	Melocactus
22	Opuntiods: Austrocylindropuntia, Consolea, Cylindropuntia, Grusonia, Miquelopuntia, Opuntia, Pereskia, Pterocactus, Tephrocactus, Tunilla, etc.
23	Parodia, Notocactus
24	Pediocactus, Sclerocactus (Ancistrocactus)
25	Rebutia, Sulcorebutia, Weingartia
26	Stenocactus, Echinofossulocactus
27	Thelocactus
28	Turbincarpus (Gymnocactus)
Other Cactus Classes	
29	Crested Cacti
30	Epiphytic Cacti: Disocactus, Epiphyllum, Hatiora, Hylocereus, Lepismium, Rhipsalis, Schlumbergia (Zygocactus), Selenicereus, etc.
31	Miniature Cacti, less than 3 inches
32	Monstrose Cacti
33	Variagated Cacti -(with 50% or more variegation)
34	Other Genera - Any Other Cactus
35	Cactus, Seed-Grown by Exhibitor
DIVISION II: SUCCULENTS	
AGAVEACEAE:	
36	Agave
37	Beaucarnea, Calibanus, Nolina, Yucca
AIZOACEAE (MESEMBRYANTHEMACEAE):	
38	Conophytum
39	Lithops
40	Other Mesembs without prominent roots or trunks: Dinteranthus, Faucaria, Fenestraria, Lapidaria, Pleiospilos, Titanopsis, etc.
41	Other Mesembs with prominent roots or trunks: Aloinopsis, Mestoklema, Monilaria, Trichodiadema, etc.
APOCYNACEAE:	
42	Adenia
43	Adenium
44	Pachypodium - Africa
45	Pachypodium - Madagascar
46	Asclepiadaceae
47	Stapeliads with succulent stems: Caralluma, Hoodia, Huernia, Orbea, Pseudolithos, Stapelia, etc.
48	Stapeliads with caudexes: Fockea, Gonolobus, Petopentia, Raphionacme, etc.
49	Vining/hanging stapeliads: Ceropogia, Cynanchum Dischidia, Hoya, Sarcostemma
ASPHODELACEAE:	
49	Aloe - African species
50	Aloe - Madascan species
51	Aloe - all other species
52	Aloe - hybrids
53	Gasteria, Gasteraloe, Gasterworthia
54	Haworthia, Haworthiopsis, Tullista, Astroloba - species
55	Haworthia hybrids
56	ASTERACEAE (Compositaceae): Leptosyne (Coreopsis), Othonna, Senecio (Kleinia), etc.
57	BROMELIACEAE: Cryptanthus, Dyckia, Hechtia, Tillandsia, Etc.

CRASSULACEAE	
58	Adromischus
59	Aeonium, Greenovia
60	Cotyledon, Tylecodon
61	Crassula
62	Dudleya
63	Echeveria
64	Graptopetalum (Tacitus), Pachyphytum, hybrids (xPachyveria, xGraptoveria)
65	Kalanchoe
66	Sedum, Sedum hybrids (xSedeveria)
67	Sempervivum (Jovibarba)
68	CUCURBITACEAE: Cephalopentandra, Corallocarpus, Gerrardanthus, Ibervillea, Kedrostis, Momordica, Xerosicyos, Zygocycos, etc.
69	DIDIERACEAE: Alluadiopsis, Alluadia, Calyptrotheca, Decarya, Didieria
70	DRACAENACEAE: Sansevieria
EUPHORBIACEAE:	
Euphorbia species endemic to Madagascar:	
71	Euphorbia Madascan caudiciform or thickened roots type: capsaintemariensis, decaryi, francoisii, hedyotioides, etc.
72	Euphorbia Madagascan millii type: beharensis, delphinensis, duranii, etc.
73	Euphorbia Madagascan stem type: ankarensis, leuconeura, stenoclada, etc.
74	Euphorbia Madagascan shrub type: bongolavensis, geroldii, millotii, etc.
Euphorbia species not endemic to Madagascar:	
75	Euphorbia caudiciform type: groenewaldii, knuthii, stellata, etc.
76	Euphorbia globular type: obesa, meloformis, suzannae, gymnocalycioides, etc.
77	Euphorbia clumping type: polygona, ferox, tubiglans, etc.
78	Euphorbia medusoid type: caput-medusae, flanganii, suppressa, etc.
79	Euphorbia, shrub type: gareipina, aeruginosa, baiouensis, multifolia, etc.
80	Euphorbia, stem type: abdelkuri, poisonii, bupluerifolia, clandestina, etc.
81	Other Euphorbiaceae genera: Endadenium, Jatropha, Pedilanthus, Synadenium
82	Monadenium
83	GERANIACEAE: Monsonia, Sarcocaulon, Perlargonium, etc.
84	GESNERIACEAE: Sinningia
85	MORACEAE: Dorstenia, Ficus
86	PORTULACACEAE (MONTIACEAE, DIDIERACEAE, ANACAMPSEROTACEAE, TALINACEAE): Anacampseros, Alluadia, Avonia, Ceraria, Didieria, etc.
87	VITACEAE: Cissus
OTHER SUCCULENT CLASSES	
88	Succulent Bulbs: Albuca, Boophane, Boweia, Bulbine, Haemanthus, Ledebouria, Massonia, Veltheimia, etc.
89	Caudiciforms: Dioscorea, Ipomoea, Pyrenacantha, Sesamothamnus
90	Cycads
91	Orchids
92	Pachycauls- New World: such as Bursera, Ceiba (mostly), Ficus, Fouquieria, Operculicarya, Pachycormus, Pseudobombax
93	Pachycauls - Old World: such as Adenium Adeniosonia, Brachychiton, Bombax, Boswellia, Commiphora, Dendrosenecio, Dendrosicyos, Ficus, Moringa, Pachypodium
94	Succulent, Seed-Grown by Exhibitor
95	Miniature Succulent - pot diameter less than 3 inches
96	Crested & Monstrose Succulents
97	Variagated Succulents (with 50% or More Variagation)
98	Other Genera - any other succulent genus (e.g. Uncarina)
DIVISION III: Collections & Arrangements	
99	Cactus Collections: a set of 3+ different cacti specimens related by a common theme, genus, form, color, or other characteristic
100	Succulent Collections: a set of 3+ different succulent specimens related by a common theme, genus, form, color, or other characteristic
101	Dish Gardens: any combination of two or more in a single pot*
DIVISION IV: SPECIALITIES COMBINING CACTI & SUCCULENTS	
102	San Diego County native cactus or other succulent
103	Baja, Mexico cactus or other succulent
104	Grafted cactus or succulent
105	Succulent Bonsai
DIVISION V: DISPLAYS	
106	Educational displays and exhibits
DIVISION VI: ART	
107	Paintings
108	Photography

PRE-SHOW PLANT PREPARATION GUIDE



One of Peter Walkowiak's beautifully staged winning plants from the 2019 Winter Show

Whitney Meyer

Let me start off saying that the details of this article would normally be covered in more depth, with visual aids, in a pre-meeting workshop at a regular meeting. As these are not normal times, we are left to do the best we can with what we have.

First, it can't be emphasized enough that this is *your show*. We want you to enter plants and we need you to volunteer. Our shows are the largest social events of the year for the society. We encourage you make new friends, learn new things, talk about your plants, win ribbons, have fun and maybe find a new plant or two.

Let's begin with **prepping** your plants. Start by watering your plants the weekend before the show. This will let your plants be hydrated but dry for the show tables. If you need to use any insecticide, also do this the week before the show. If you have any calcium (salt) build-up on your pots, clean it off with an old tooth brush and vinegar. With a damp cloth wipe any dirt and debris from the pots. Salt and

dust/dirt on the plants can be removed with water and a soft brush or cloth.

Next, **look** at the plant. Remove any garden debris and/or weeds from the pot. Check for insects and spiders. They can be removed with small brushes, tweezers, fingers, or what ever else works. Succulents may have dead leaves, stems or old flowers, clip or prune to remove. Cactus frequently have old flower remains or garden bits in the spines. Remove with tweezers. The trick is to clean the spines without breaking them. Small Agaves and Aloes often have dried leaves at the base of the plant. These can be removed or left on depending on how distracting it is to the looks of the plant. The drying leaf tips of the same group of plants may also be left or removed.

Now that you have a clean pot and plant we need to think about **top dressing**. Top dressing is the visual equivalent of matting a print or painting. It sets the plant off from the growing medium.

PRE-SHOW PLANT PREPARATION GUIDE

Top dressing is commonly gravel, crushed rock, pea gravel, coarse sand, etc. While the choice of top dressing is up to your preference, keep in mind that it should enhance, not distract from the plant. Bright colors are often distracting. You can look for top dressing at garden centers, aquarium stores, pet stores, and building supply centers.



Nicely staged succulents

Whitney Meyer

Now that the plant is all groomed for showing we come to the hardest part of the process (at least according to the show clerks), **filling out the entry cards**. The cards come in four colors: green for novice, yellow for intermediate, blue for open, and white for non-judged. Refer to the show rules for your appropriate category. You will notice that the cards divided into two sections, fill in **BOTH** sections. Also **PLEASE PRINT**.

In the exhibitor space: print your name. In the division space there are four options: Division I, one cactus plant or clump. Division II, one succulent plant or clump. Division III, dish gardens, more than one plant or multiple types of plants. And Division IV, anything goes, plants plus nonplants.

In the newsletter, on the web site, and on printed pages at the show, you will find the various class numbers for your plants. These numbers correspond to the species family of the plants. The class number is followed by the size designation, i.e.

23A, 44B, etc. If the inside of the pot measures, height plus width, 10 inches or less it is the A category. If the height plus width is greater than 10 inches it is then in the B category.

In the variety section of the entry card enter the specific species, hybrid, or hybrid cross name of the plant. The class and variety information should match the information on your plants ID tag. After completing the entry cards, take the plant and corresponding card to the class numbered areas on the show tables. Remove the plant ID tag and place the plant on top of the entry card on the table. Repeat for your next plant. Thanks for your support of the show and good luck.

In wrapping this up, if you have any questions there will be fellow society members to help identify plants and answer questions online (see page 7) and in the show room Friday afternoon and Saturday morning,

JERRY GARNER



Judges at the 2019 Winter Show

Whitney Meyer

UPCOMING GUEST SPEAKER



MAY 11 SPEAKERS
JERRY MOREAU &
LINDA SINKOVIC
“THE GENUS PFEIFFERA”

ABOUT OUR SPEAKERS

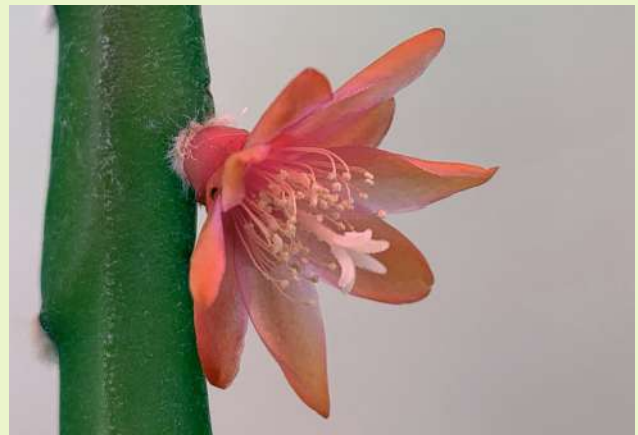
Jerry Moreau is a long-time member of SDES. He has served in many capacities: president, director, 2nd vice president, librarian, SDES coordinator for the Epiphyllum collection at the Safari Park for 15 years, and as editor of SDES' newsletter Epi News. In addition, he has won many awards for his flowers, plants and displays at the annual Mother's Day Shows. In 2017 Jerry received the Founders Award from the Epiphyllum Society of America for his efforts in promoting Epiphyllums.

Linda Sinkovic is a member of SDES who now lives in Santa Cruz. When Linda lived here in San Diego she helped develop our collection of epiphytic plants at the Safari Park. In addition, she has a large collection of epiphytic plants which she moved with her to Santa Cruz. Most importantly Linda completely revised and updated the 'Species of Epiphytic Cacti' section for the Epiphyllum Society of America's Registry of Species and Hybrids. The 21-page update includes extensive lists, descriptions, and historical information. During her tenure in San Diego, she served as recording secretary, director, and librarian. From her home in Santa Cruz, she continues to write monthly columns for Epi News and currently serves as SDES' Research and Education Coordinator.

ABOUT OUR SPEAKER TOPIC

Pfeiffera is a small genus with six species from South America. For many years its members were part of *Rhipsalis*, then *Lepismium*. After molecular phylogenetic studies these members were found to be not part of Rhipsalideae at all but an independently evolved lineage of epiphytic cacti.

Jerry Moreau will be narrating the presentation at the meeting. Linda Sinkovic, our member who lives in Santa Cruz, prepared the presentation. Both have written extensively on Epiphyllum and epicactus for several publications including CSSA's newsletter, To the Point.



ABOUT OUR PRE-MEETING TALK

Join us just before the meeting for **Jerry Garner's** pre-meeting demo on staging plants for the show at 11:30... you won't want to miss it!

[SEE YOU ON MAY 11, 2024!](#)

UPCOMING EVENTS

MAY COFFEE IN THE GARDEN

Who: Wanda Mallen and Gary Vincent **When:** Saturday, May 18, 2024, from 10 – 3

Where: 3856 Cedar Vale Way, Fallbrook. There's plenty of street parking

Wanda Mallen and Gary Vincent will be opening their garden for the club to visit again this year. The above-average rainfall of the past two years has led to amazing growth in the garden (and lots of weeds, of course!). As always, we are adding plants and redoing, trimming and enjoying getting to live here among nature's beauty. Wanda has become obsessed with hoyas and mangaves, so there are expanded and new vignettes of these plants.

By popular request, Carlos from Rios Succulents will be selling his wonderful selections, both for the novice and the experienced collector. Wanda will have some items from her collection as well.

We hope you will come and please also invite any friends, neighbors or relatives you'd like to.



MEMBER SECTION

MEETING SNACKS

We all enjoy gathering every month and spending time with each other before the meeting, during the meeting... and at the break! Unfortunately, there has been a decline of participation in the snack table this year.

Any members who can help out by bringing a small contribution of snacks (such as fruit, crackers, cookies, sweets, or other similar items), the club would be most appreciative. Thank you for helping us make our gatherings – and even our snack breaks – extra special!



Aeonium sedifolium

Pam Badger



Flowers of *Aeonium* sp

Pam Badger

APRIL BRAG TABLE

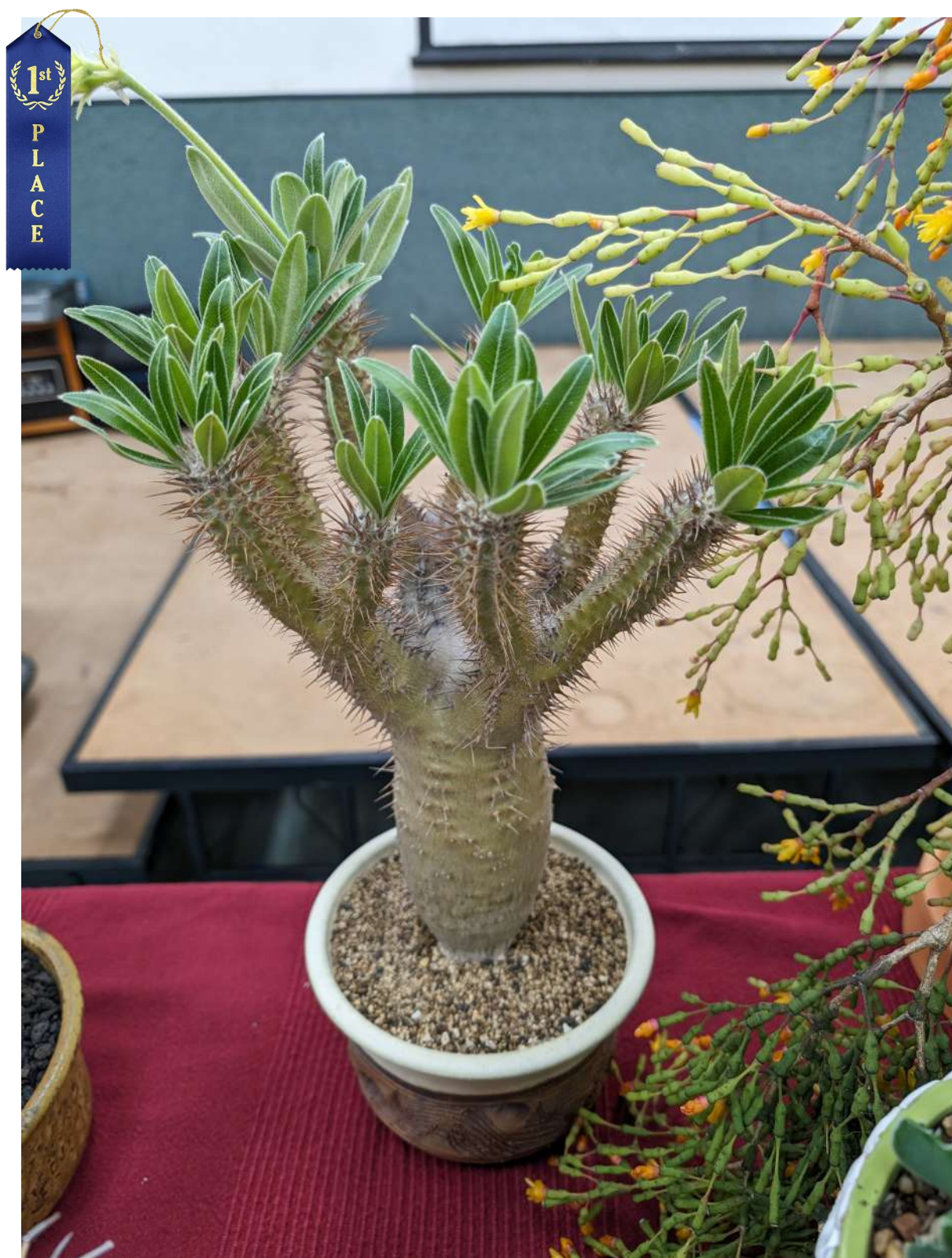


MAMMILLARIA MAGNIFICA CHUCK RAMEY

SDCSS members shared a full table of plants at the April Meeting's Brag Table!

Thank you for bringing in your incredible plants, and thanks to judge **Kelly Griffin** for reviewing this exceptionally large showing from our great club.

BRAG TABLE // NOVICE SUCCULENT



1ST: *PACHYPODIUM GRACILIUS*

LUIS GONZALEZ

BRAG TABLE // NOVICE SUCCULENT



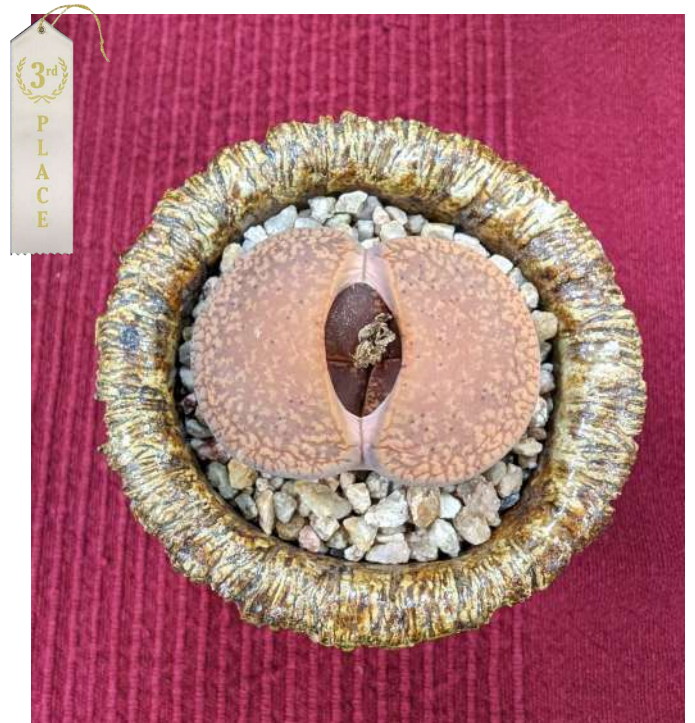
2ND: *EUPHORBIA MELOFORMIS SPP VALIDA*
LUIS GONZALEZ



2ND: *DORSTENIA GIGAS*
LUIS GONZALEZ



3RD: *HAWORTHIA TRUNCATA*
MIRIAM A. PARENT



3RD: *LITHOPS SP.*
LUIS GONZALEZ

BRAG TABLE // INTERMEDIATE SUCCULENT



1ST: *FAUCARIA TIGRINA*

MARIAM A. PARENT



1ST: *DUDLEYA GNOMA*

JOSE RAMOS

BRAG TABLE // INTERMEDIATE SUCCULENT



2ND: *HAWORTHIA CUSPIDATA VARIEGATA*

CHUCK RAMEY



3RD: *BOOPHONE DISTICHA*

JOSE RAMOS

BRAG TABLE // INTERMEDIATE SUCCULENT



Echeveria sp.

LYN MARDESICH



Lithops fulviceps

PETER HAGOPIAN



Crassula muscosa

CHUCK RAMEY



Monadenium magnificum

WENDY GOLDMAN

BRAG TABLE // INTERMEDIATE SUCCULENT



DUDLEYA HASSEI

JOSE RAMOS



EUPHORBIA ANGULARIS

JIM ANDERSON



GLOTTIPHYLLUM PEERSII

CHUCK RAMEY



LITHOPS BROMFIELDII

PETER HAGOPIAN

BRAG TABLE // INTERMEDIATE SUCCULENT



TYLECODON PANICULATUS V. DINTERI

JOSE RAMOS



DUDLEYA CAESPITOSA

JOSE RAMOS



DUDLEYA ATTENUATA

JOSE RAMOS



DUDLEYA EDULIS

JOSE RAMOS

BRAG TABLE // INTERMEDIATE SUCCULENT



DUDLEYA FARINOSA

JOSE RAMOS



DUDLEYA SP.

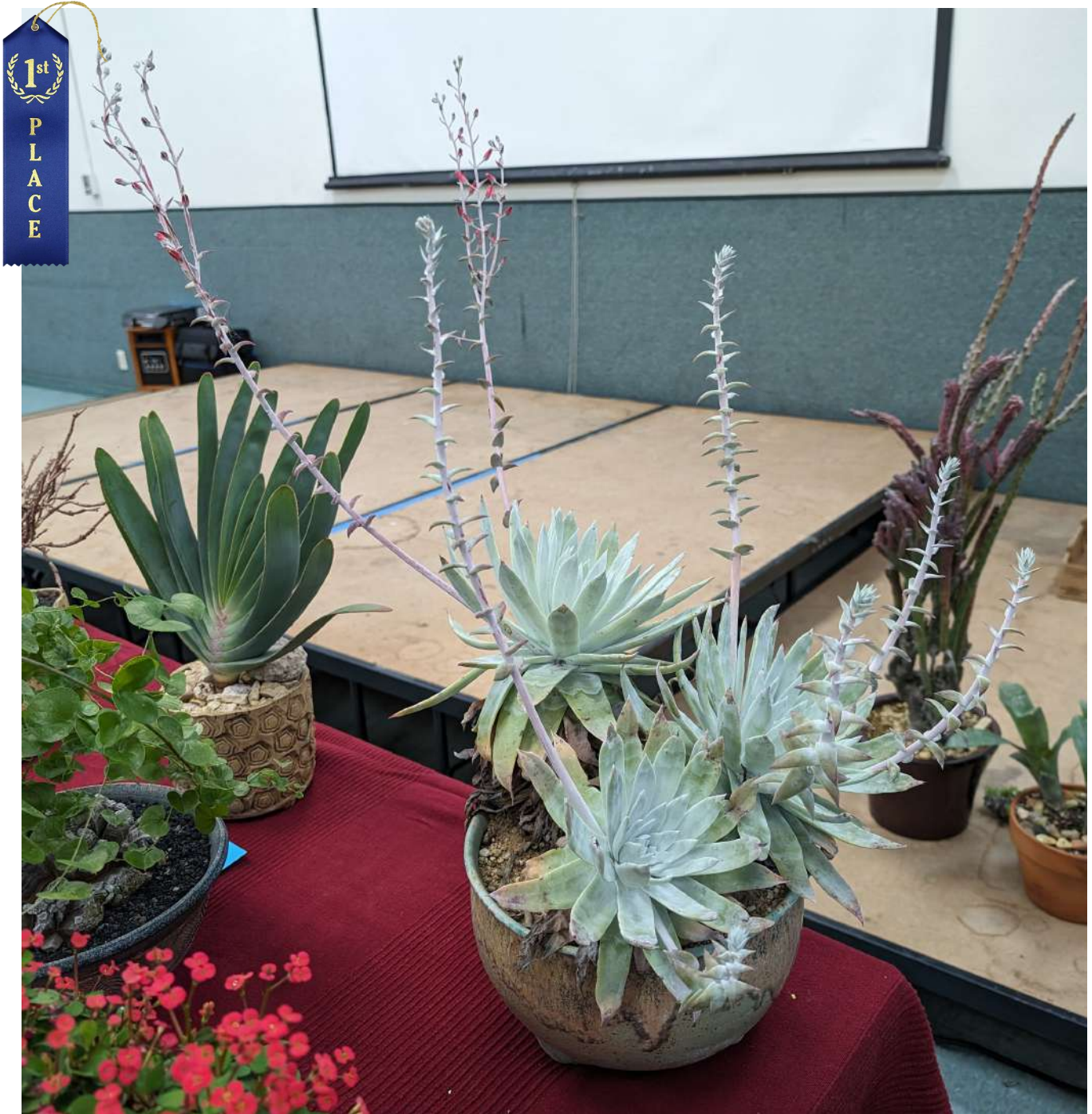
JOSE RAMOS



DUDLEYA ANTHONII

JOSE RAMOS

BRAG TABLE // ADVANCED SUCCULENT



1ST: *DUDLEYA ANTHONII*

PAM BADGER

BRAG TABLE // ADVANCED SUCCULENT



2ND: *CRASSULA DECEPTOR*

NAOMI ORORZ



2ND: *DIOSCOREA ELEPHANTIPES*

DEAN KARRAS



3RD: *EUPHORBIA PLATYCLADA*

PAM BADGER

BRAG TABLE // ADVANCED SUCCULENT



EUHPORBIA MILLII CREST

PAM BADGER



KUMARA PLICATILIS

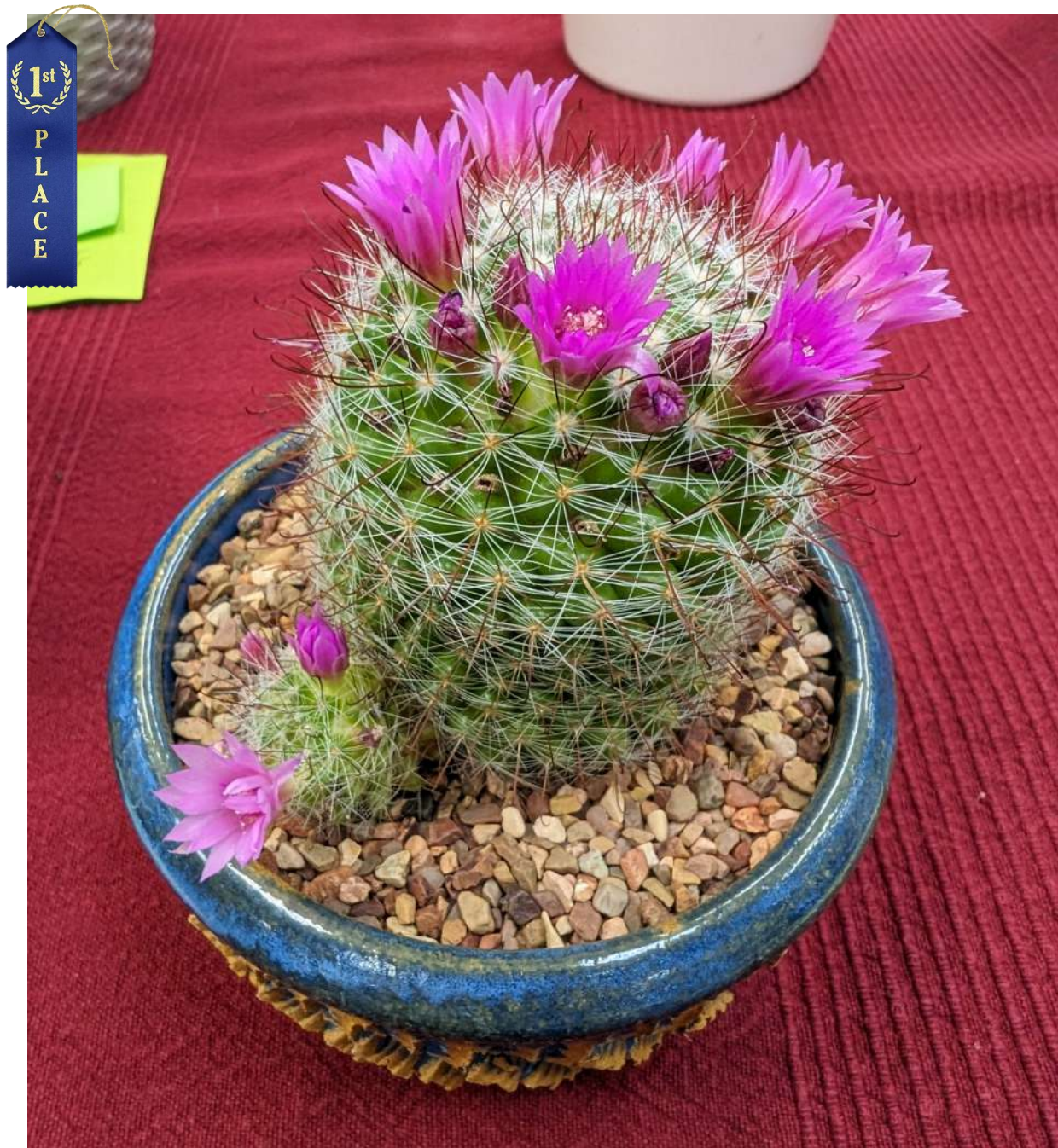
PAM BADGER



AGAVE PURPURORUM

DEAN KARRAS

BRAG TABLE // NOVICE CACTUS



1ST: *MAMMILLARIA ZEILMANNIANA*

LUIS GONZALEZ

BRAG TABLE // NOVICE CACTUS



2nd
PLACE

2ND: *NOTOCACTUS BUINGII*

SERGIO LOPEZ



2nd
PLACE

2ND: *MAMMILLARIA ELONGATA*

MIRIAM A. PARENT



3rd
PLACE

3RD: *GYMNOCALYCIUM SAGLIONIS*

MIRIAM A. PARENT



3rd
PLACE

3RD: *MAMMILLARIA SP.*

DREW SEARING

BRAG TABLE // NOVICE CACTUS



LOBIVIA ARACHNACANTHA V. *TORRECILLACENSIS*
SERGIO LOPEZ



MAMMILLARIA HAHNIALONGATA MIRIAM A. PARENT



UNKNOWN SP. DREW SEARING



UNKNOWN SP. DREW SEARING

BRAG TABLE // INTERMEDIATE CACTUS



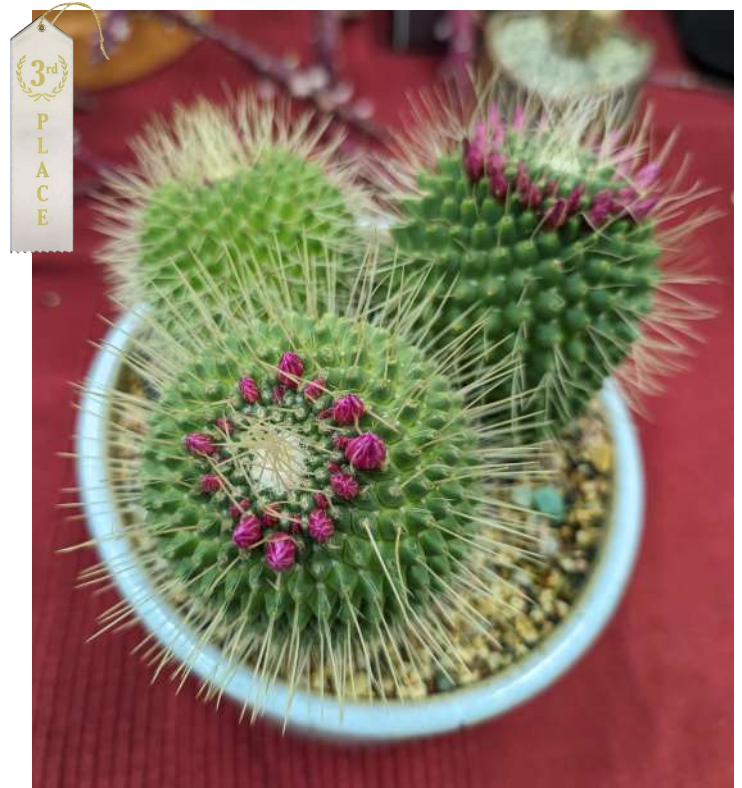
1ST: *PUNA CLAVARIOIDES*

WENDY GOLDMAN



2ND: *HATIORA SALICORNIoidES*

JIM ANDERSON



3RD: *MAMMILLARIA SPINOSISSIMA 'UN PICO'*

CHUCK RAMEY

BRAG TABLE // INTERMEDIATE CACTUS



COPIAPOA HYPOGAEA

CHUCK RAMEY



FEROCACTUS RECTISPINUS

PETER HAGOPIAN



ASTROPHYTUM ORNATUM

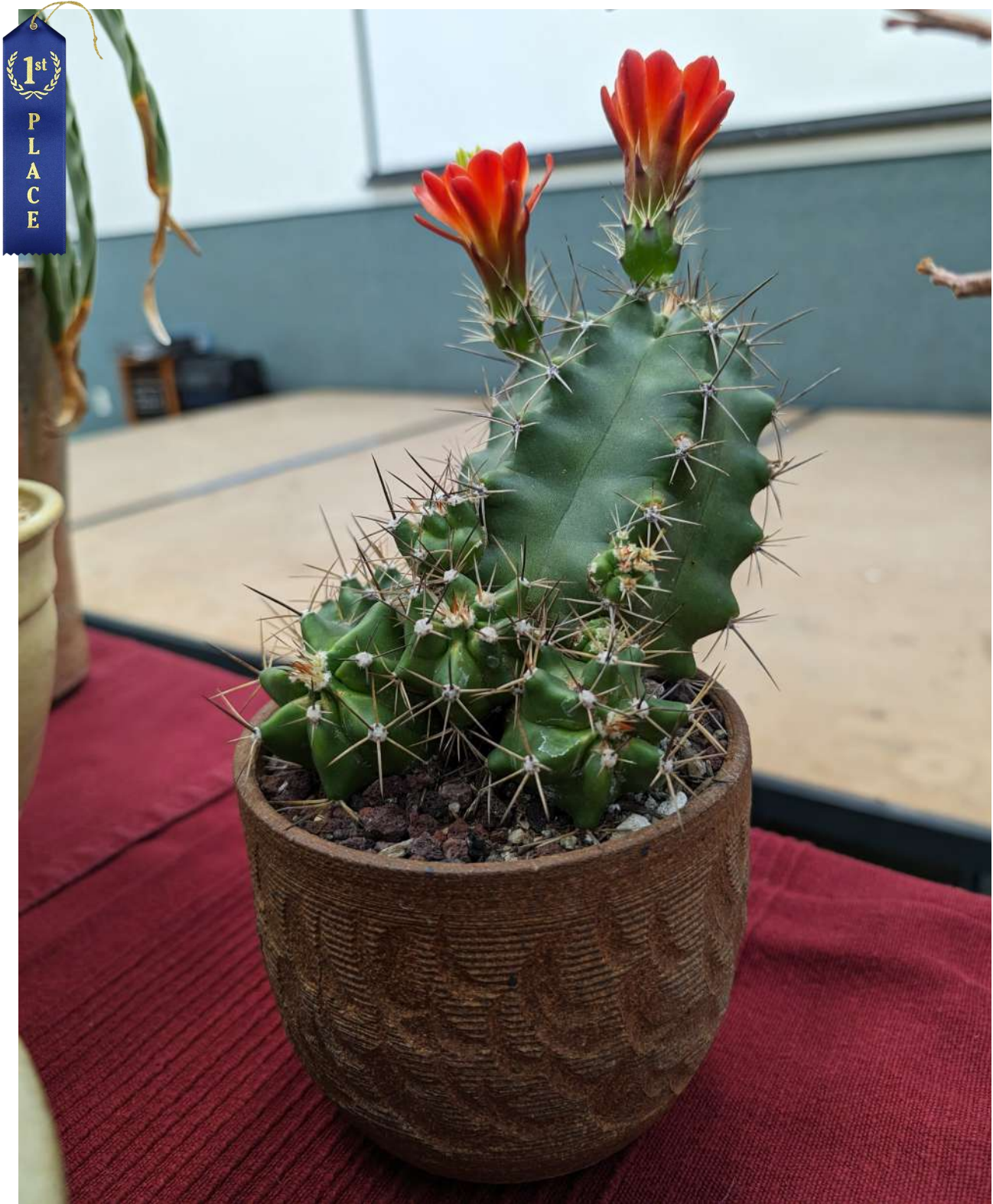
PETER HAGOPIAN



LEPISIUM CRUCIFORM

JIM ANDERSON

BRAG TABLE // ADVANCED CACTUS



1ST: *ECHINOCEREUS TRIGLOCHIDIATUS*

PAM BADGER